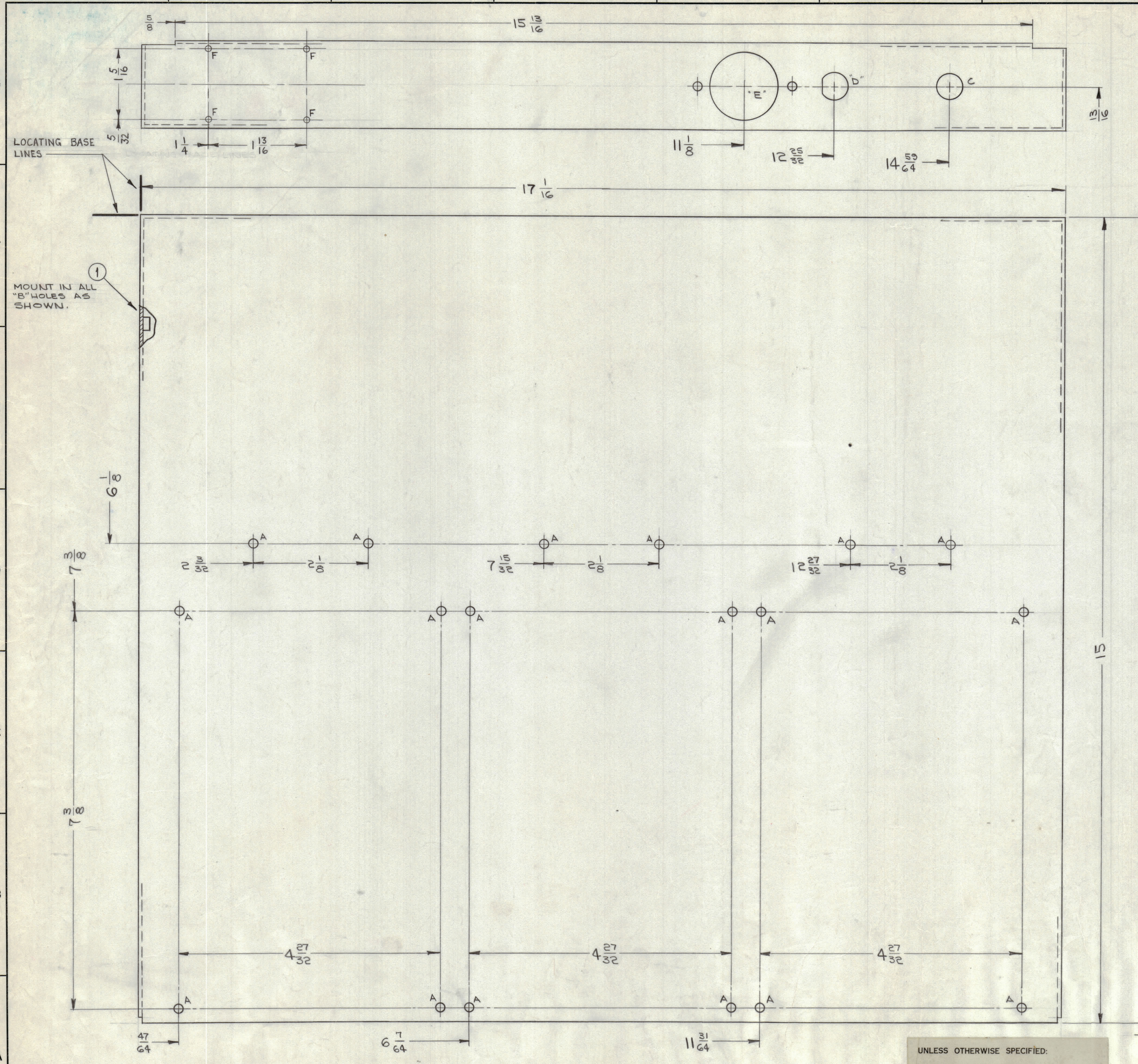
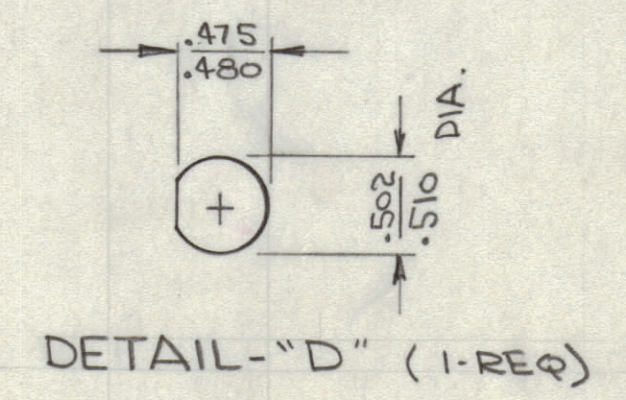
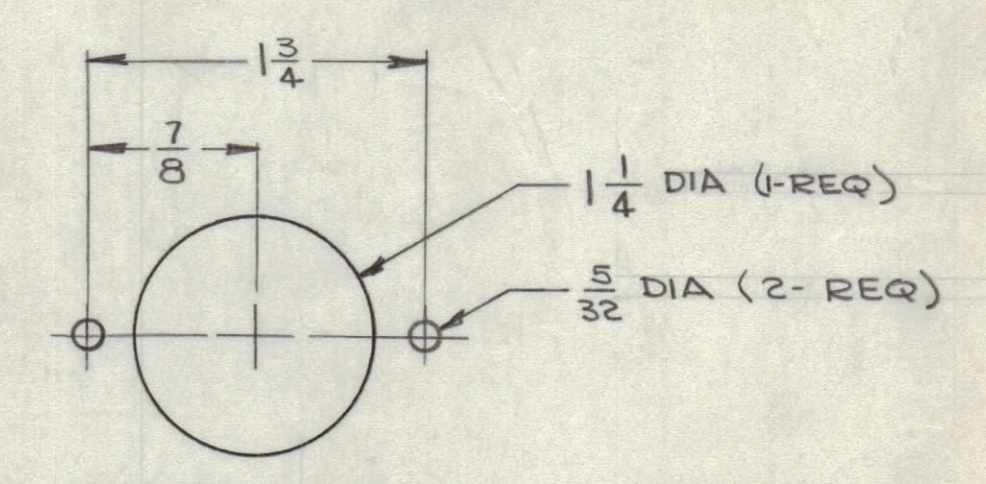


REVISIONS							
ZONE	SYM	DESCRIPTION	DATE	E.M.N. NO.	DRAFT	CHKD	APPD
X		EXPER. RELEASE	8-10-64	X			
		ORIGINAL RELEASE FOR PRODUCTION	8-20-64			ATB	
G10	A	ON PIC. 4" HOLES ADDED	9-28-64	12462	RF	(a)	AKW



OPPOSITE SIDE IDENTICAL

HOLE	DESCRIPTION	REQ.
A	5/32 DIA.	18
B	.191-.194 DIA	8
C	15/32 DIA	1
D	SEE DETAIL	1
E	SEE DETAIL	1
F	3/32 DIA	4



METAL STAMP TMC
PART NO. 1/8 HIGH
GOTHIC, WITH LATEST
REVISION LETTER.

REF: LD1563

- UNLESS OTHERWISE SPECIFIED:
1. USE MATERIAL THICKNESS FOR MAXIMUM RADIUS ON ALL BENDS
 2. ALL ANGULAR BENDS 90 DEGREES
 3. REMOVE ALL BURRS AND SHARP EDGES
 4. MOUNT INSERTS AFTER FINISHING

QTY/UNIT	MODEL USED ON	ASSY. NO.
SCALE 1:1	CODE A	

REQ'D.	ITEM	PART NUMBER	DESCRIPTION	SYMBOL
8	1	NT129-632-4	NUT, ROUND, SWAGE TYPE	B

LIST OF MATERIAL	
MATERIAL	.062 THK., ALUMINUM 5052-H32
FINISH	S404-YELLOW IRIDITE

THE TECHNICAL MATERIEL CORP.	
MAMARONECK, NEW YORK	
TITLE	CHASSIS, MAIN
UNLESS OTHERWISE SPECIFIED DIMENSIONS ARE IN INCHES AND INCLUDE CHEMICALLY APPLIED OR PLATED FINISHES	DRAWN BY Jansen DATE 8/10/64
FRACTIONS	CHECKED DATE 8/11/64
DECIMALS	ELECT. DES. DATE 8/11/64
TOLERANCES	MECH. DES. DATE 8/11/64
ANGLES	DATE 8/11/64
ANGLES	DATE 8/11/64

MS3869 A