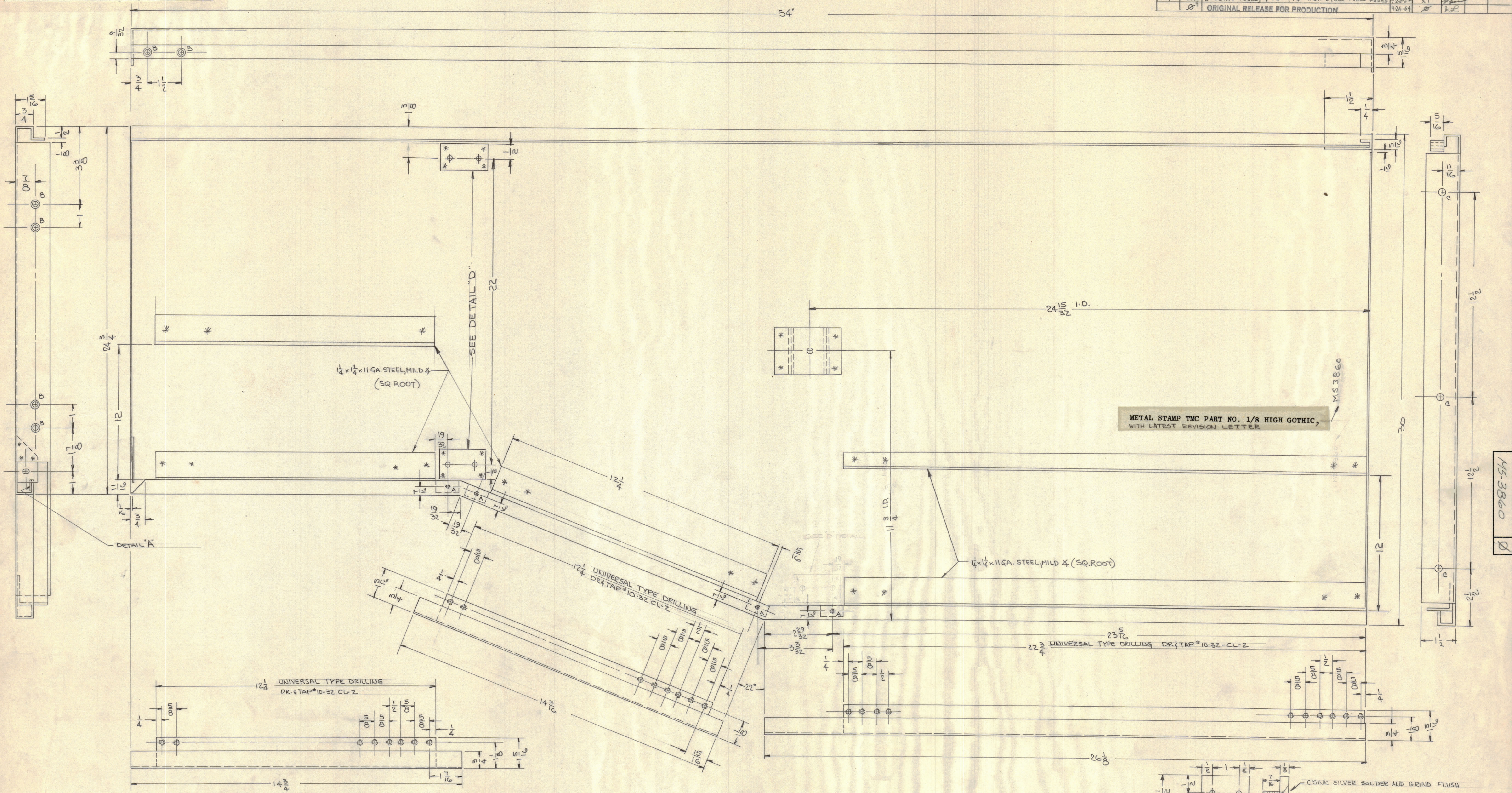
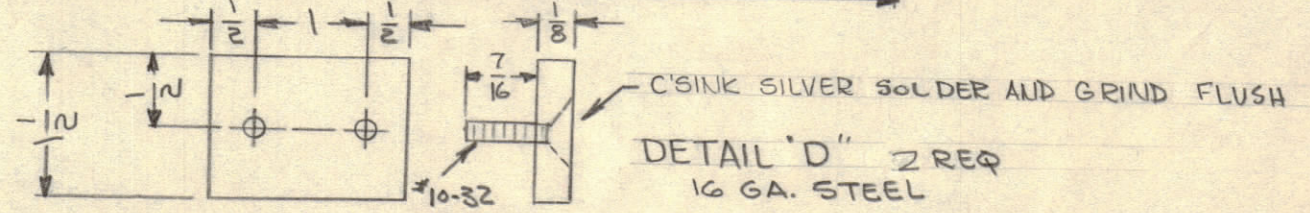


REVISIONS							
ZONE	SYM	DESCRIPTION	DATE	E.M.N. NO.	DRAFT	CHKD	APPD
-#	X	EXPER RELEASE	9/24/64	X			
-#	X1	D DETAIL ADDED; 1-1/4 x 1/4 x 1/8 GA STEEL PIECES ADD'D	9/24/64	X1			
-#	2	ORIGINAL RELEASE FOR PRODUCTION	9/24/64	2			



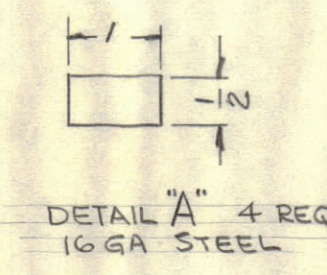
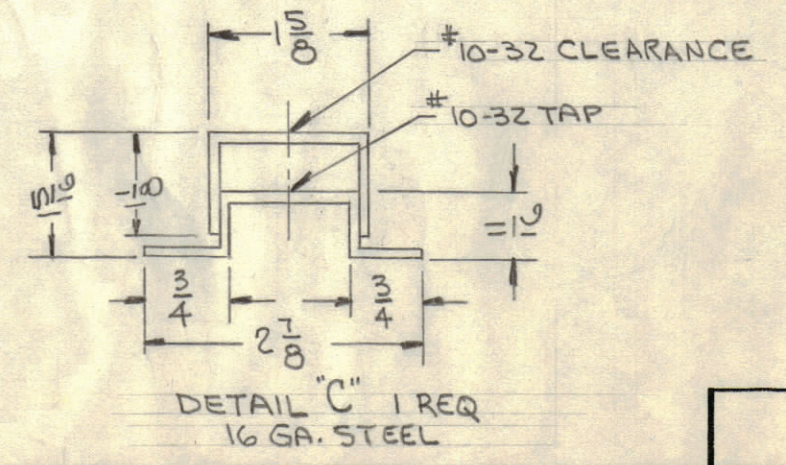
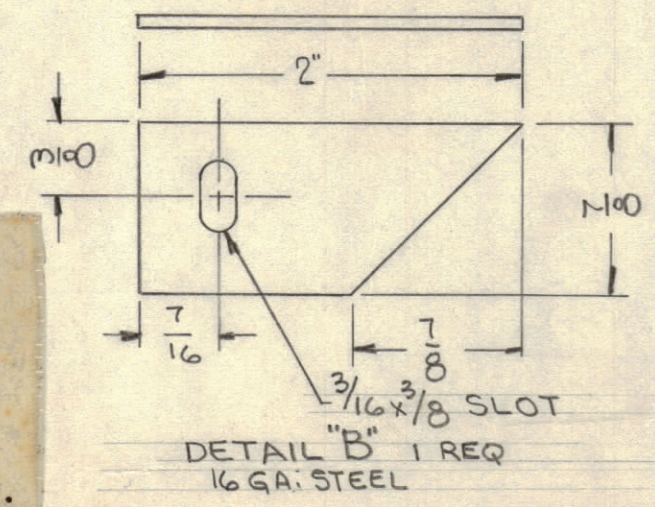
METAL STAMP TMC PART NO. 1/8 HIGH GOTHIC,
WITH LATEST REVISION LETTER



NOTE
* SPOT WELD ALL JOINING PIECES SECURELY

- HOLE LEGEND
- A-DR & TAP FOR #8-32 4 REQ.
 - B-C'SINK FOR #8-32 FHMS 6 REQ.
 - C-1/4(250) DIA 3 REQ.

- UNLESS OTHERWISE SPECIFIED:
1. USE MATERIAL THICKNESS FOR MAXIMUM RADIUS ON ALL BENDS.
 2. ALL ANGULAR BENDS 90°.
 3. REMOVE ALL BURRS AND SHARP EDGES.



NOTES

REQ'D.	ITEM	PART NUMBER	DESCRIPTION	SYMBOL
STURMER LIST OF MATERIAL				
	MATERIAL	1/8 GA. STEEL	THE TECHNICAL MATERIEL CORP. MAMARONECK, NEW YORK	
	FINISH		TITLE PANEL, LEFT, OUTSIDE	
	SCALE	1/8" = 1" (EOPA-1)	UNLESS OTHERWISE SPECIFIED DIMENSIONS ARE IN INCHES AND INCLUDE CHEMICALLY APPLIED OR PLATED FINISHES	
	QTY. UNIT	4	DRAWN J. Schiffer	DATE 9-24-64
	CODE	A	CHECKED [Signature]	DATE 9-24-64
			ELECT. DES. [Signature]	DATE 9-24-64
			MECH. DES. [Signature]	DATE 9-24-64
			FINAL APPROVAL [Signature] DATE 9-24-64	
			REV. 1/8 GA. STEEL	

QTY.	UNIT	MODEL USED ON	ASBY. NO.
4		EOPA-1	
None		A	

DECIMALS	ANGLES	FRACTIONS
.X ± .05	± 1/64	± 1/64
.XX ± .01	± 30'	± 30'
.XXX ± .005	± 30'	± 30'