

UNLESS OTHERWISE SPECIFIED:

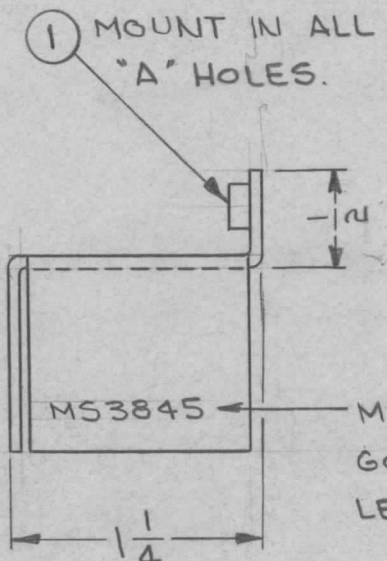
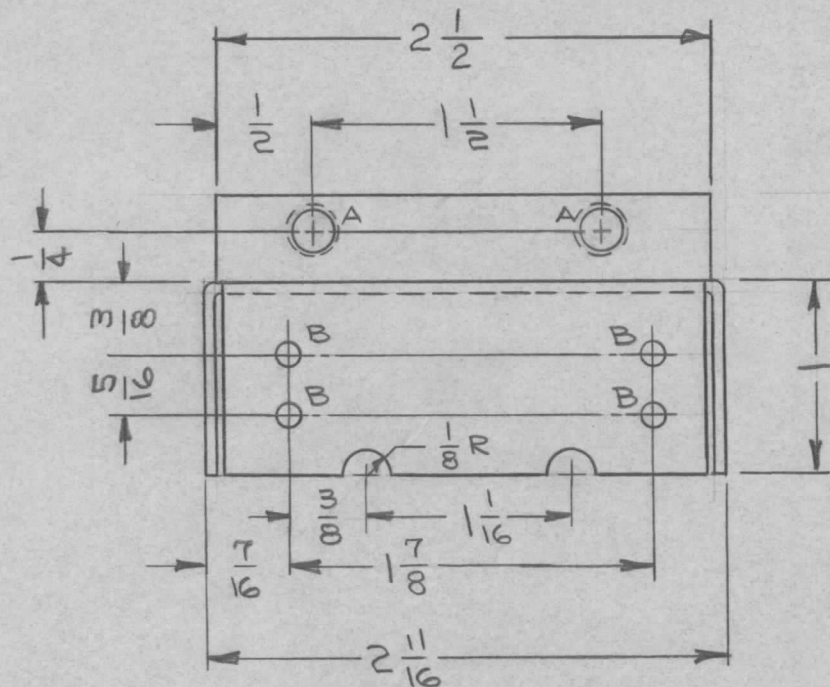
1. USE MATERIAL THICKNESS FOR MAXIMUM RADIUS ON ALL BENDS.
2. ALL ANGULAR BENDS 90°.
3. REMOVE ALL BURRS AND SHARP EDGES.
4. MOUNT INSERTS AFTER FINISHING.

REQ. PER UNIT	USED ON		
	MODEL	ASS'Y. NO.	DATE
1	RAK-31A	A3666	6-4-64
1	RAK-31C	A3666	6-4-64

MS3845 A

HOLES

A - .221 - .224 DIA, 2 REQ.
 B - .113 DIA, 4 REQ.



METAL STAMP TMC PART NO 1/8 HIGH GOTHIC WITH LATEST REVISION LETTER.

A	SIDE VIEW; 1/4 DIM. RELOCATED.	3-4-65	13640	22	<i>[Signature]</i>	2	1	NT129-832-4	NUT, ROUND, SWAGE TYPE	A
Ø	ORIGINAL RELEASE FOR PRODUCTION	6/16/64	Ø	A.M.	<i>[Signature]</i>	REQ. ITEM	PART NO.	STURMER	DESCRIPTION	SYMBOL
XI	2 1/2 DIM. ADDED ITEM 1 WAS NT129-832-5 TITLE WAS CON., CHAS, BLOW	6/15/64	XI	AM	@	.064 THK. STOCK SIZE		THE TECHNICAL MATERIEL CORP. MAMARONECK, NEW YORK		
X	EXPER. RELEASE	6-5-64	1	<i>[Signature]</i>		ALUMINUM MATERIAL		CHASSIS, BLOWER CONNECTOR		
SYM	DESCRIPTION	DATE	CH. NO.	DRAFTS	CHECKER	ENG. APP.	5052-H32	<i>[Signature]</i>	@	<i>[Signature]</i>
UNLESS OTHERWISE SPECIFIED DIMENSIONS ARE IN INCHES AND INCLUDE CHEMICALLY APPLIED OR PLATED FINISHES		SCALE		1:1						
DECIMALS .X ± .05 .XX ± .01 .XXX ± .005	TOLERANCES	FRACTIONS ± 1/64 ANGLES ± 0° 30'	CODE A	<i>[Signature]</i>						
5404 YELLOW IRIDITE		FINISH & SPEC. NO.		ELEC. DES. APP.		MECH. DES. APP.		6-16-64 MS3845 A		