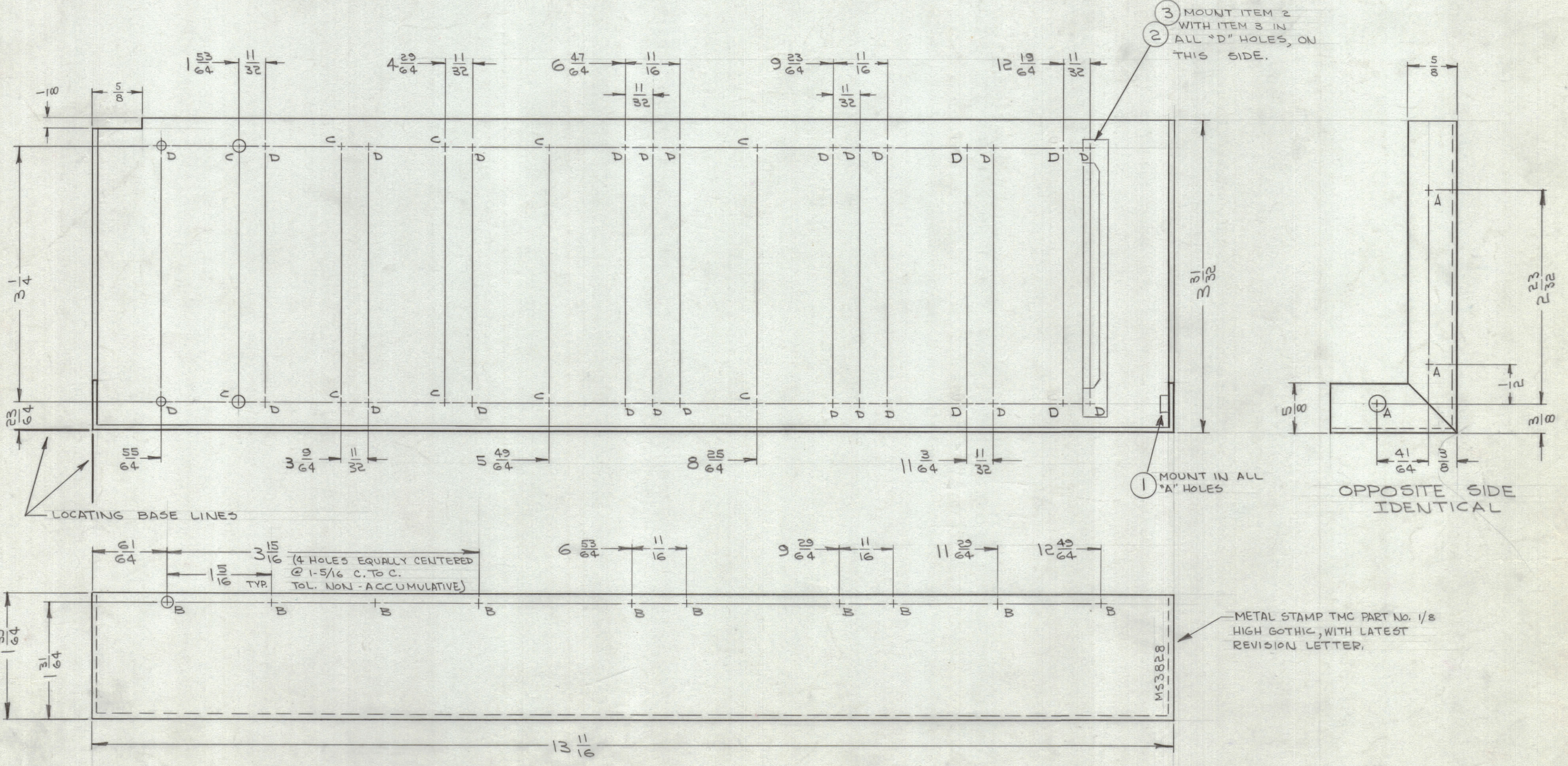


REVISIONS							
ZONE	SYM	DESCRIPTION	DATE	E.M.N. NO.	DRAFT	CHKD	APPD
-#	XI	REDRAWN & REDESIGNED	9-21-64	XI	J. L.		
-	Ø	ORIGINAL RELEASE FOR PRODUCTION	9-25-64	-	WB		
B7, A4	A	"B" WAS 5/32 DIA, MODEL WAS "PFC-1"	10-9-64	12604	JTB	@	WLR
	B	PICT: "D" HOLES WERE "C" HOLES (4 PL.); B/M: IT, (2) QTY WAS 12; IT, (3) QTY WAS 28; HOLE LEGEND: "C" QTY WAS 14; "D" QTY WAS 24	1-12-65	13256	J.L.		



HOLE	DESCRIPTION	REQ.
A	.191-.194 DIA	6
B	3/16 DIA	10
C	9/64 DIA	10
D	3/32 DIA	28

UNLESS OTHERWISE SPECIFIED:

- USE MATERIAL THICKNESS FOR MAXIMUM RADIUS ON ALL BENDS
- ALL ANGULAR BENDS 90 DEGREES
- REMOVE ALL BURRS AND SHARP EDGES
- MOUNT INSERTS AFTER FINISHING

1	PFCB-1	
QTY./UNIT	MODEL USED ON	ASSY. NO.
SCALE 1:1	CODE A	

THE CONTENTS OF THIS DRAWING ARE THE EXCLUSIVE PROPERTY OF THE TECHNICAL MATERIEL CORP. ITS UNAUTHORIZED USE OR REPRODUCTION IN WHOLE OR IN PART IS STRICTLY FORBIDDEN.

REQ'D.	ITEM	PART NUMBER	DESCRIPTION	SYMBOL
28	3	EY101-3	EYELET	D
14	2	CU157-1	RETAINER	D
6	1	NT129-632-4	NUT, ROUND, SWAGE TYPE	A

GELLMAN LIST OF MATERIAL			
MATERIAL .081 ALUMINUM 5052-H32		THE TECHNICAL MATERIEL CORP. MAMARONECK, NEW YORK	
FINISH 5404 YELLOW IRIDITE		TITLE SUPPORT, PRINTED CIRCUIT REAR	
UNLESS OTHERWISE SPECIFIED DIMENSIONS ARE IN INCHES AND INCLUDE CHEMICALLY APPLIED OR PLATED FINISHES		DRAWN J. L.	DATE 9-22-64
DECIMALS .X ± .05 .XX ± .01 .XXX ± .005		CHECKED J. S. @	DATE 9-25-64
FRACTIONS ± 1/64 ANGLES ± 0° 30'		ELECT. DES. J. L.	DATE
TOLERANCES		MECH. DES.	DATE
		SHEET M53828 B	
		REV. LTR.	

NOTES

M53828 B