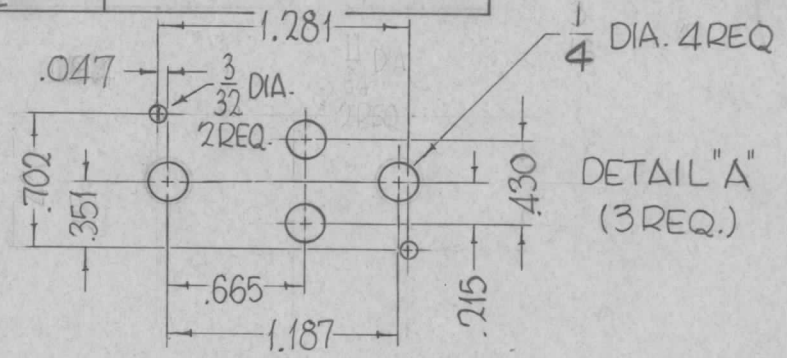
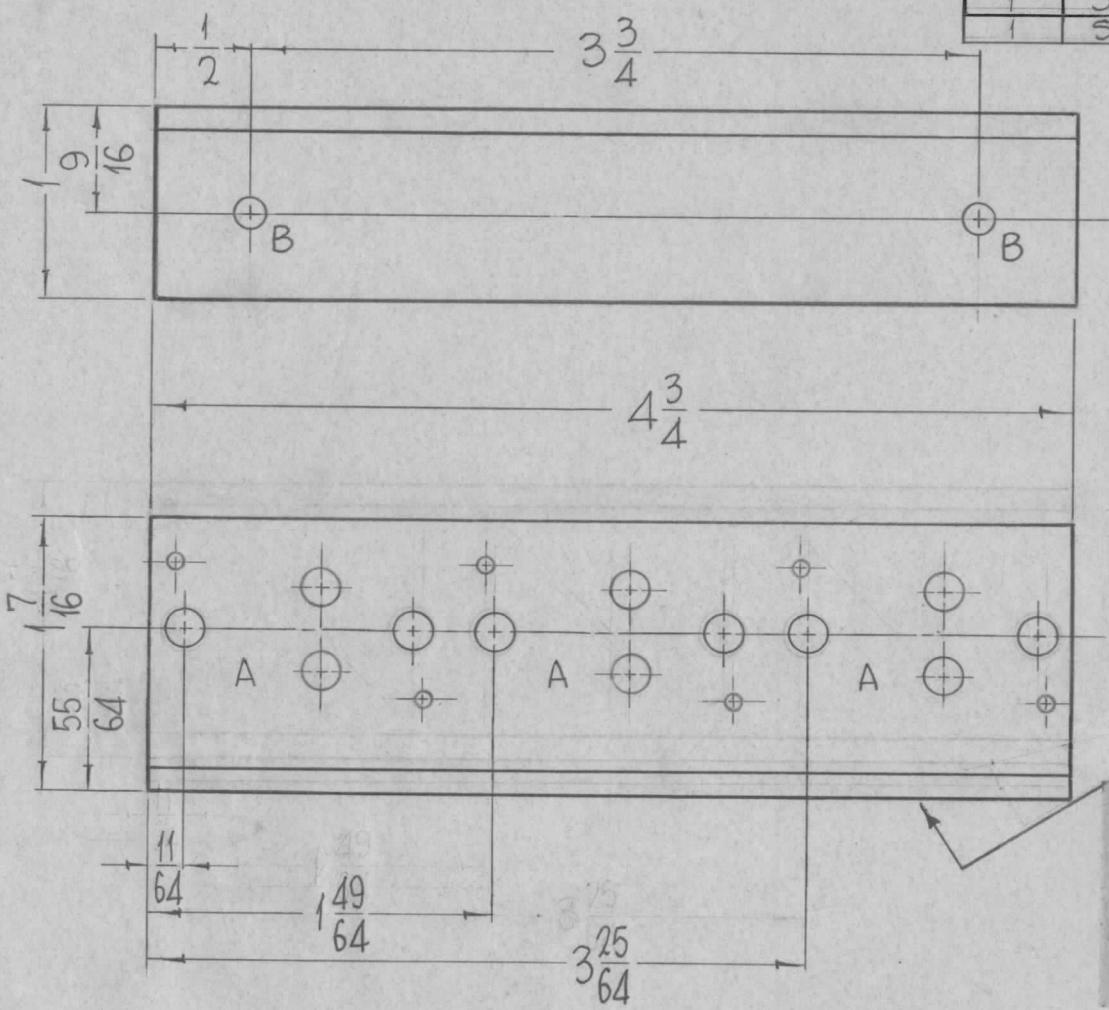


REQ. PER UNIT	USED ON	
	MODEL	DATE
1	STR-1A	5-18-64
1	STE	

MS3816 A



HOLES
B-11/64 DIA 2

REQ

METAL STAMP TMC PART NO. 1/8 HIGH GOTHIC ON THIS SURFACE, WITH LATEST REVISION LETTER.

- UNLESS OTHERWISE SPECIFIED:
1. USE MATERIAL THICKNESS FOR MAXIMUM RADIUS ON ALL BENDS
 2. ALL ANGULAR BENDS 90 DEGREES
 3. REMOVE ALL BURRS AND SHARP EDGES

REF-TMC DWG LD1541

SYM	DESCRIPTION	DATE	CH. NO.	DRAFTS	CHECKER	ENG. APP.	REQ. ITEM	PART NO.	T. AALTONEN	DESCRIPTION	SYMBOL	
A	RELOC P/N STAMP	12-13-66	17470	RME	<i>[Signature]</i>					THE TECHNICAL MATERIEL CORP. MAMARONECK, NEW YORK	MS3816 A	
Ø	ORIGINAL RELEASE FOR PRODUCTION	9-24-64	Ø	92			1/8 THICK					
X	EXPERIMENTAL RELEASE	5/18/64		G.D.L.			ALUMINUM					
UNLESS OTHERWISE SPECIFIED DIMENSIONS ARE IN INCHES AND INCLUDE CHEMICALLY APPLIED OR PLATED FINISHES							SCALE 1:1		MATERIAL			
DECIMALS .X ± .05 .XX ± .01 .XXX ± .005							TOLERANCES		FRACTIONS ± 1/64 ANGLES ± 0° 30'		CODE A	
5052-H-32							HEAT TREAT. SPEC. #		DRAWN John C. Biele		CHECKED g.f. @	
S404-IRIDITE, 14-2 AL COAT							FINISH & SPEC. NO.		ELEC. DES. APP.		MECH. DES. APP.	