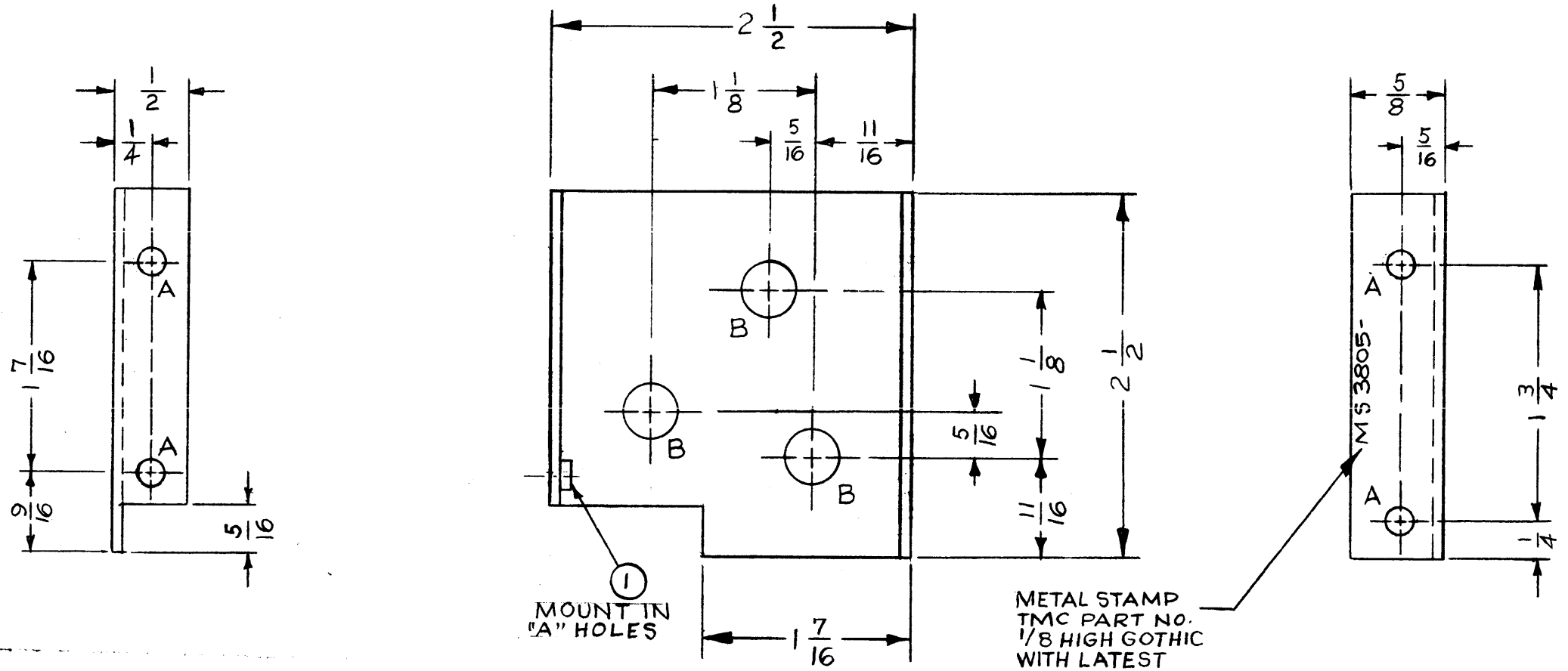


HOLE CHART		
HOLE	HOLE DIAMETER	REQ'D
A	.191 - .194 DIA.	4
B	7/16 DIA.	3

MS3805 A

REVISIONS					
SYM	DESCRIPTION	DATE	E.M.N. NO.	DRAFT	CHKD APPD
X	EXPERIMENTAL RELEASE	6/15/64	X	A.M.	
XI	'B' HOLES WERE 3/8 DIA.	6/15/64	XI	A.M.	
Ø	ORIGINAL RELEASE FOR PRODUCTION	6/15/64	Ø	A.M.	
A	DWG. NO. WAS MS3705	8.20.64	12165	NSB	RL FEP



UNLESS OTHERWISE SPECIFIED:

1. USE MATERIAL THICKNESS FOR MAXIMUM RADIUS ON ALL BENDS.
2. ALL ANGULAR BENDS 90°.
3. REMOVE ALL BURRS AND SHARP EDGES.
4. MOUNT INSERTS AFTER FINISHING.

4	1	NT129-632-4	NUT, ROUND, SWAGE TYPE	A
REQ'D.	ITEM	PART NUMBER	DESCRIPTION	SYMBOL

EATON LIST OF MATERIAL				
MATERIAL		THE TECHNICAL MATERIEL CORP.		
.081 ALUMINUM 5052-H32		MAMARONECK, NEW YORK		
FINISH		TITLE		
S404 - IRIDITE 14-2 AL-COAT		BRACKET ₂ MOUNTING (AUDIO FILTER)		
UNLESS OTHERWISE SPECIFIED DIMENSIONS ARE IN INCHES AND INCLUDE CHEMICALLY APPLIED OR PLATED FINISHES		DRAWN A. MARINO	DATE 6/12/64	FINAL APPROVAL <i>RL</i>
		CHECKED <i>@</i>	DATE 6-15-64	
		ELECT. DES. <i>FEP</i>	DATE 6/15/64	MS 3805
		MECH. DES.	DATE	A
		SHEET		REV. LTR.

2	RAK-102	
Q'TY./UNIT	MODEL USED ON	ASS'Y. NO.
SCALE 1:1	CODE A	
THE CONTENTS OF THIS DRAWING ARE THE EXCLUSIVE PROPERTY OF THE TECHNICAL MATERIEL CORP. ITS UNAUTHORIZED USE OR REPRODUCTION IN WHOLE OR IN PART IS STRICTLY FORBIDDEN.		

NOTES