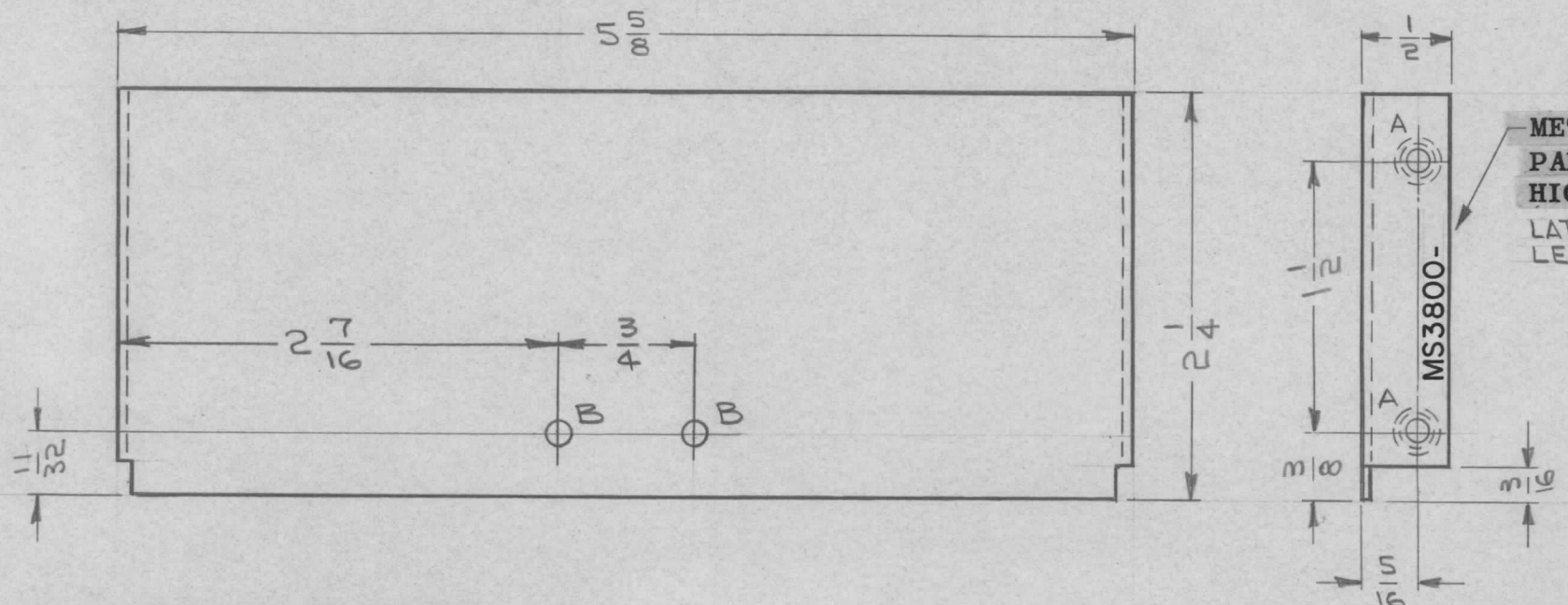
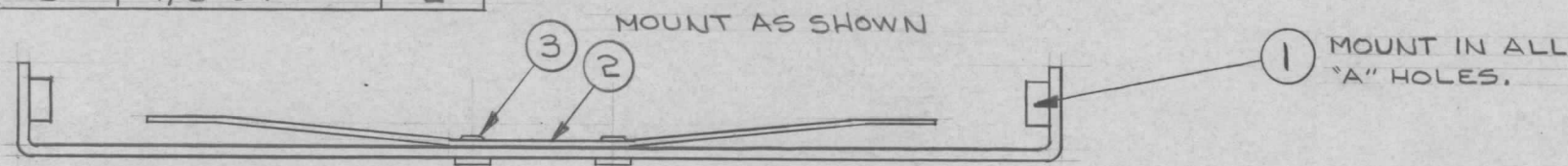


HOLE	DESCRIPTION	REQ.
A	.161-.164 DIA	4
B	1/8 DIA.	2

REQ. PER UNIT	USED ON		
	MODEL	ASS'Y. NO.	DATE
1	SBS-7	A2887	5-8-64

MS3800  $\emptyset$



- UNLESS OTHERWISE SPECIFIED:
1. USE MATERIAL THICKNESS FOR MAXIMUM RADIUS ON ALL BENDS.
  2. ALL ANGULAR BENDS 90°.
  3. REMOVE ALL BURRS AND SHARP EDGES.
  4. MOUNT INSERTS AFTER FINISHING.

REF: LD1538 (1)

OPPOSITE SIDE IDENTICAL

REQ.	ITEM	PART NO.	DESCRIPTION	SYMBOL
2	3	EY100-1	EYLET, FLAT FLANGE	B
1	2	SP151538	SPRING, RETAINER-AIR FILTER	B
4	1	NT129-440-4	NUT, ROUND, SWAGE TYPE	A

SYM	DESCRIPTION	DATE	CH. NO.	DRAFTS	CHECKER	ENG. APP.
$\emptyset$	ORIGINAL RELEASE	11/1/65				
XI	2 "B" HOLES ADDED ITEM 2 ADDED	7/8/64	2	<i>John</i>	<i>W. B. King</i>	
X	EXPER. RELEASE	5-8-64	1	<i>G. J. ...</i>		

UNLESS OTHERWISE SPECIFIED  
DIMENSIONS ARE IN INCHES AND INCLUDE  
CHEMICALLY APPLIED OR PLATED FINISHES

SCALE 1:1

DECIMALS	FRACTIONS	CODE
.X ± .05	± 1/64	A
.XX ± .01	ANGLES	
.XXX ± .005	± 0° 30'	

REQ. ITEM	PART NO.	DESCRIPTION	SYMBOL
	.064 THK	THE TECHNICAL MATERIEL CORP.	
	STOCK SIZE	MAMARONECK, NEW YORK	
	ALUMINUM	COVER, HOUSING, BLOWER	
	MATERIAL		
	5052-H32		
	TYPE & TEMPER	HEAT TREAT. SPEC.	
	S404 YELLOW IRIDITE		
	FINISH & SPEC. NO.	ELEC. DES. APP.	MECH. DES. APP.

O. POSE

*G. J. ...* *J.P.* *John W. King 10/2/65*

DRAWN CHECKED FINAL APPROVAL

MS3800  $\emptyset$