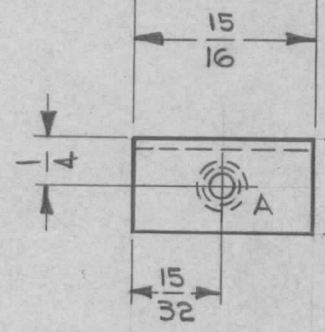
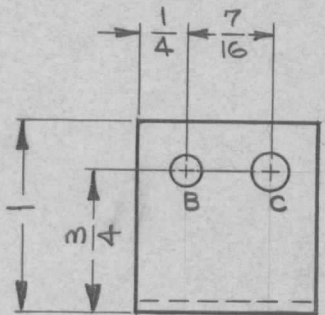
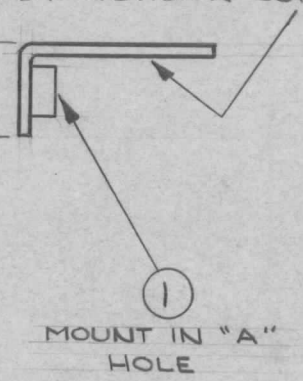


REQ. PER UNIT	USED ON			MS3788	Ø
	MODEL	ASS'Y. NO.	DATE		
1	SBS-7	A2886	4-29-64		



METAL STAMP TMC PART NO. 1/8
HIGH GOTHIC ON REAR, WITH
LATEST REVISION LETTER.



MOUNT IN "A"
HOLE

LEGEND		
HOLE	DESCRIPTION	REQ
A	.191-.194 DIA.	1
B	5/32 DIA.	1
C	3/16 DIA.	1

- UNLESS OTHERWISE SPECIFIED:
1. USE MATERIAL THICKNESS FOR MAXIMUM RADIUS ON ALL BENDS.
 2. ALL ANGULAR BENDS 90°.
 3. REMOVE ALL BURRS AND SHARP EDGES.
 4. MOUNT INSERTS AFTER FINISHING.

							1	1	NT129-632-4	NUT, ROUND, SWAGE TYPE	A		
							REQ.	ITEM	PART NO.	DESCRIPTION	SYMBOL		
									.064 THK.	THE TECHNICAL MATERIEL CORP. MAMARONECK, NEW YORK			
									STOCK SIZE				
									ALUMINUM	BRACKET, MOUNTING, RELAY			
									MATERIAL				
									5052-H32				
									TYPE & TEMPER	HEAT TREAT. SPEC.	DRAWN	CHECKED	FINAL APPROVAL
									S404, YELLOW IRIDITE				
									FINISH & SPEC. NO.	ELEC. DES. APP.	MECH. DES. APP.	MS3788	Ø

UNLESS OTHERWISE SPECIFIED
DIMENSIONS ARE IN INCHES AND INCLUDE
CHEMICALLY APPLIED OR PLATED FINISHES

SCALE 1:1

DECIMALS
.X ± .05
.XX ± .01
.XXX ± .005

FRACTIONS
± 1/64
ANGLES
± 0° 30'

TOLERANCES

CODE
A