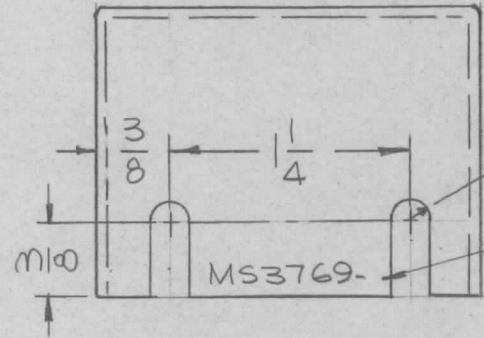
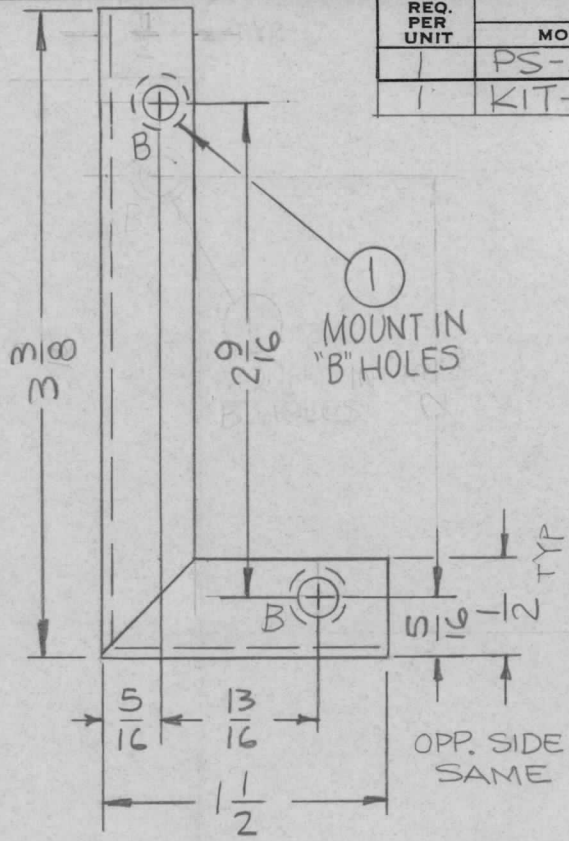
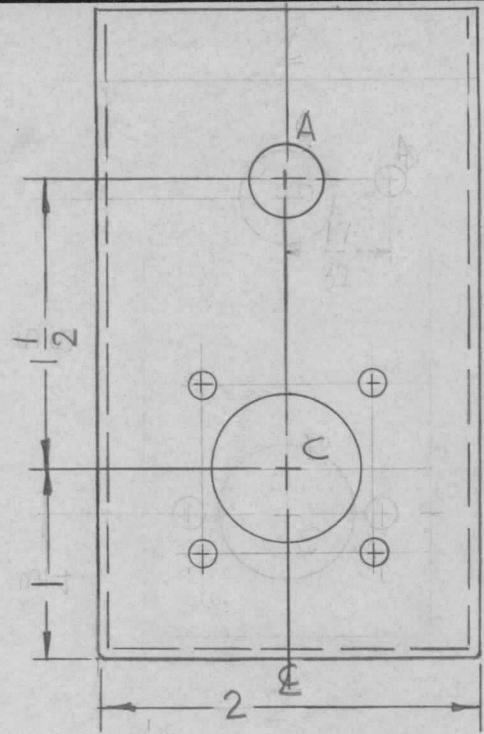


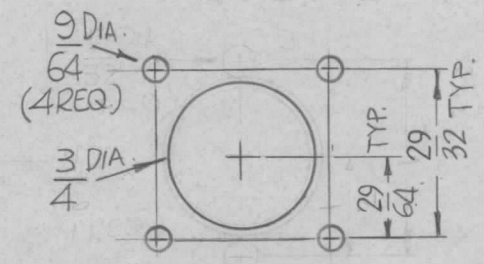
REQ. PER UNIT	USED ON		
	MODEL	ASS'Y. NO.	DATE
1	PS-4A	A 454B	11-18-66
1	KIT-320	A 1-11	11-18-66

MS3769 \emptyset



MARK TMC P/N
1/8 HIGH GOTHIC
W/LATEST REV.
LETTER.

HOLE'S:
A-3/8 DIA. (1REQ.)
B-.191-.194 DIA. (4REQ.)
C-SEE DETAIL (1REQ.)



DETAIL - C

- UNLESS OTHERWISE SPECIFIED:
1. USE MATERIAL THICKNESS FOR MAXIMUM RADIUS ON ALL BENDS
 2. ALL ANGULAR BENDS 90 DEGREES
 3. REMOVE ALL BURRS AND SHARP EDGES
 4. MOUNT INSERTS AFTER FINISHING

REF: LD1509-

REQ. ITEM	PART NO.	F. BUDETTI DESCRIPTION	SYMBOL
4	1	NT129-632-4 NUT, PLAIN, SPLINE	B
.081 THICK		THE TECHNICAL MATERIEL CORP. MAMARONECK, NEW YORK	
STOCK SIZE			
ALUMINUM		BRACKET MTG. SWITCH	
MATERIAL			
5052-H32		DRAWN <i>[Signature]</i> CHECKED <i>[Signature]</i> FINAL APPROVAL <i>[Signature]</i>	
TYPE & TEMPER		HEAT TREAT. SPEC.	
5404 YEL. IRIDITE		ELEC. DES. APP. MECH. DES. APP.	
FINISH & SPEC. NO.		MS3769 \emptyset	

SYM	DESCRIPTION	DATE	CH. NO.	DRAFTS	CHECKER	ENG. APP.
\emptyset	ORIGINAL RELEASE FOR PRODUCTION	3/23/67			RME	
X ₁	COMPLETELY REVISED	1-11-67			<i>[Signature]</i>	<i>[Signature]</i>
X	EXP. RELEASE	11-18-66			<i>[Signature]</i>	<i>[Signature]</i>
UNLESS OTHERWISE SPECIFIED DIMENSIONS ARE IN INCHES AND INCLUDE CHEMICALLY APPLIED OR PLATED FINISHES		SCALE 1:1				
DECIMALS .X \pm .05 .XX \pm .01 .XXX \pm .005		TOLERANCES		FRACTIONS \pm 1/64 ANGLES \pm 0° 30'		
CODE		A				