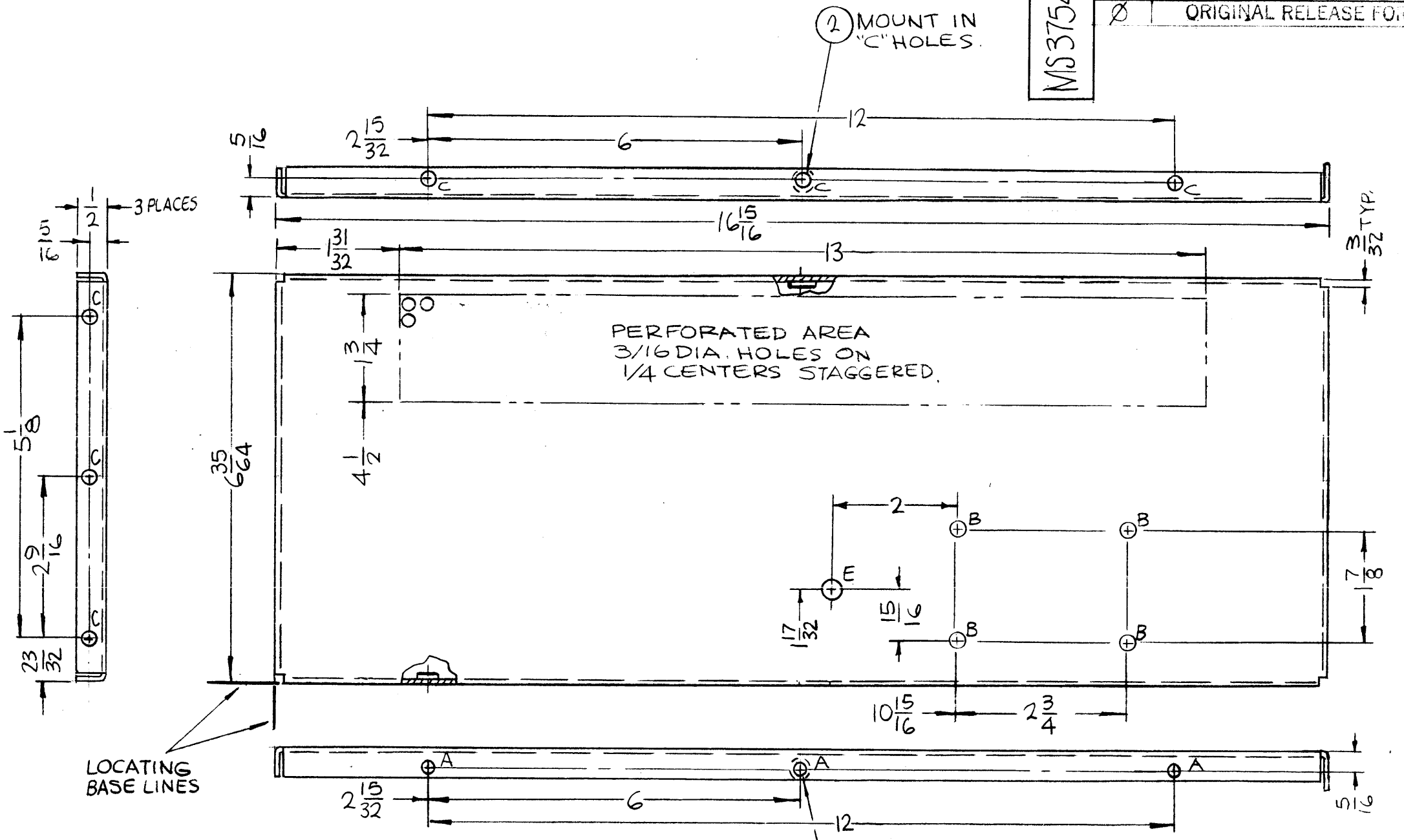


MS3754

REVISIONS						
SYM	DESCRIPTION	DATE	E.M.N. NO.	DRAFT	CHKD	APPD
X	EXP. RELEASE	10-10-66	X			
Ø	ORIGINAL RELEASE FOR PRODUCTION	5/22/69		U		



HOLES	DESCRIPTION	REQ.
A	.191-194 DIA.	3
B	13/64 DIA.	4
C	.221-224 DIA.	7
D	15/64 DIA.	2
E	21/64 DIA.	1

MARK TMC P/N
1/8 HIGH GOTHIC
W/LATEST REV.
LETTER.

MS 3754-1 AS SHOWN
MS3754-2 OPPOSITE HAND

- UNLESS OTHERWISE SPECIFIED:
1. USE MATERIAL THICKNESS FOR MAXIMUM RADIUS ON ALL BENDS
 2. ALL ANGULAR BENDS 90 DEGREES
 3. REMOVE ALL BURRS AND SHARP EDGES
 4. MOUNT INSERTS AFTER FINISHING

NOTES

1 EA.	TFP-2.5K	
Q'TY./UNIT	MODEL USED ON	ASS'Y. NO.
SCALE 1:2	CODE A	S401-451 S401- S401-
THE CONTENTS OF THIS DRAWING ARE THE EXCLUSIVE PROPERTY OF THE TECHNICAL MATERIEL CORP. ITS UNAUTHORIZED USE OR REPRODUCTION IN WHOLE OR IN PART IS STRICTLY FORBIDDEN.		

REQ'D.	ITEM	PART NUMBER	DESCRIPTION	SYMBOL
7	2	NT129-832-4	NUT, PLAIN, SPLINE	C
3	1	NT129-632-4	NUT, PLAIN, SPLINE	A

F. BUDETTI

LIST OF MATERIAL

MATERIAL
.081 THICK ALUMINUM
5052-H32

FINISH
S404 YEL. IRIDITE

THE TECHNICAL MATERIEL CORP.
MAMARONECK, NEW YORK

TITLE
PLATE, LEFT & RIGHT, FILTER DRAWER

DRAWN	DATE 9-27-66	FINAL APPROVAL	DATE 5/22/69
CHECKED	DATE 11/12/66		
ELECT. DES.	DATE	MS3754	Ø
MECH. DES.	DATE 8-25-69	SHEET	REV. LTR.

UNLESS OTHERWISE SPECIFIED
DIMENSIONS ARE IN INCHES AND INCLUDE
CHEMICALLY APPLIED OR PLATED FINISHES

DECIMALS
.X ± .05
.XX ± .01
.XXX ± .005

FRACTIONS
± 1/64
± 0° 30'

TOLERANCES