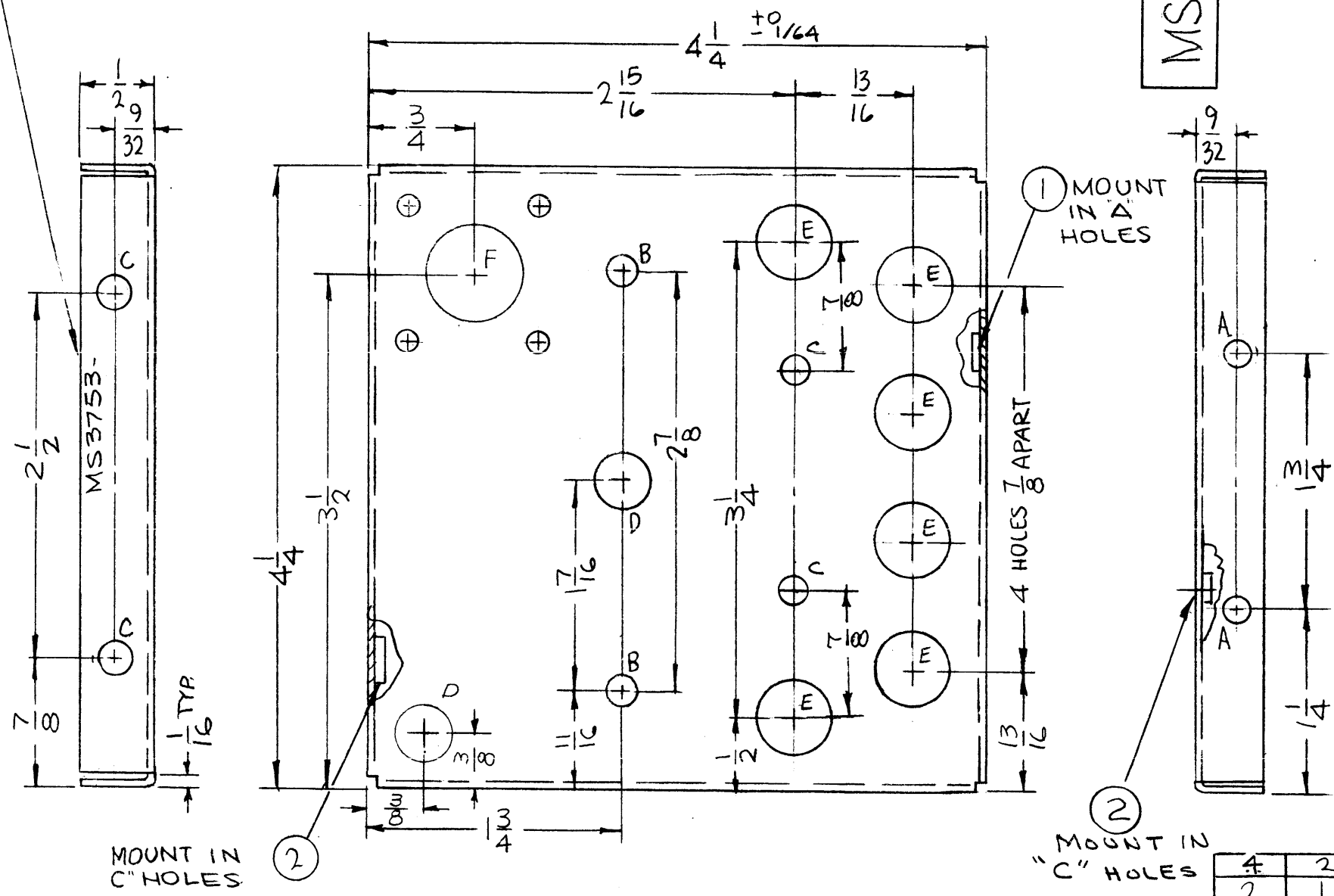


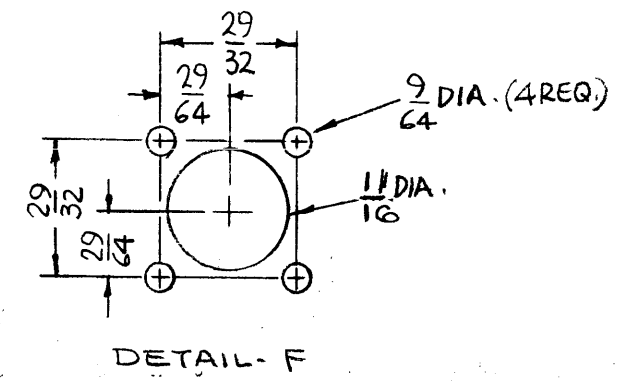
REVISIONS						
SYM	DESCRIPTION	DATE	E.M.N. NO.	DRAFT	CHKD	APPD
X	EXP. RELEASE	10-10-66	X			
X1	2 "C" HOLES ADDED, 1/16" DIA WAS 2/32" ON "F" DET.	9/12/67	X1			
X2	1 "D" HOLE ADDED	10.14.68	C.C.			
Ø	ORIGINAL RELEASE FOR PRODUCTION	9/29/69				

MS3753

MARK TMC P/N
1/8" HIGH GOTHIC
W/LATEST REV.
LETTER.



HOLES	DESCRIPTION	REQ.
A	.191-.194 DIA.	2
B	.13/64 DIA.	2
C	.221-.224 DIA.	4
D	3/8 DIA.	2
E	1/2 DIA.	6
F	SEE DETAIL	1



- UNLESS OTHERWISE SPECIFIED:
1. USE MATERIAL THICKNESS FOR MAXIMUM RADIUS ON ALL BENDS
 2. ALL ANGULAR BENDS 90 DEGREES
 3. REMOVE ALL BURRS AND SHARP EDGES
 4. MOUNT INSERTS AFTER FINISHING

REF: LD1495-1
LD1495-2

REQ'D.	ITEM	PART NUMBER	DESCRIPTION	SYMBOL
4	2	NT129-832-3	NUT, PLAIN, SPLINE	C
2	1	NT129-632-3	NUT, PLAIN, SPLINE	A

F. BUDETTI LIST OF MATERIAL

MATERIAL: .051 THICK ALUMINUM 5052-H32

FINISH: S404 YEL. IRIDITE

TITLE: THE TECHNICAL MATERIEL CORP. MAMARONECK, NEW YORK

PLATE, FRONT & REAR, BANDSWITCH FILTER

DRAWN	DATE	FINAL APPROVAL	DATE
CHECKED	DATE		5/22/69
ELECT. DES.	DATE		
MECH. DES.	DATE		

MS3753

DECIMALS: .X ± .05, .XX ± .01, .XXX ± .005

FRACTIONS: ± 1/64, ± 0° 30'

TOLERANCES

NOTES

2	TFP-2.5K	
Q'TY./UNIT	MODEL USED ON	ASS'Y. NO.
SCALE 1:1	CODE A	S401-451 S401- S401-
THE CONTENTS OF THIS DRAWING ARE THE EXCLUSIVE PROPERTY OF THE TECHNICAL MATERIEL CORP. ITS UNAUTHORIZED USE OR REPRODUCTION IN WHOLE OR IN PART IS STRICTLY FORBIDDEN.		