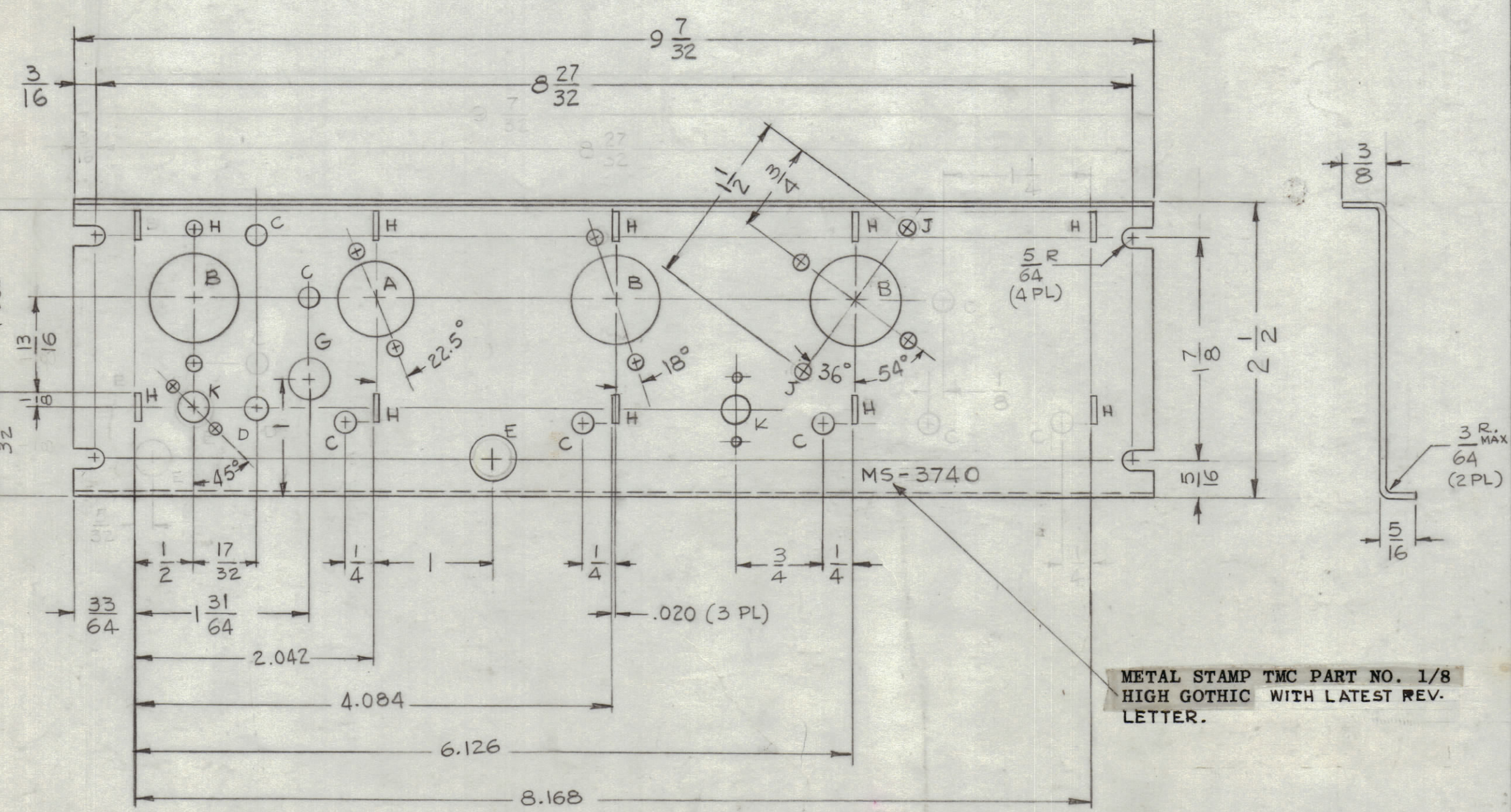
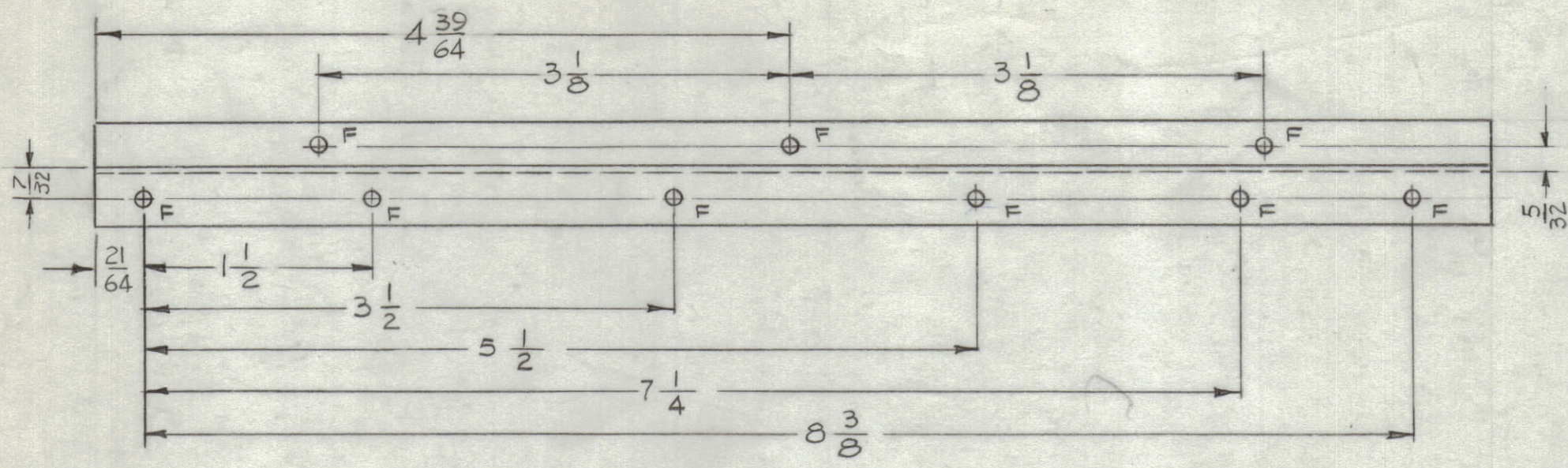
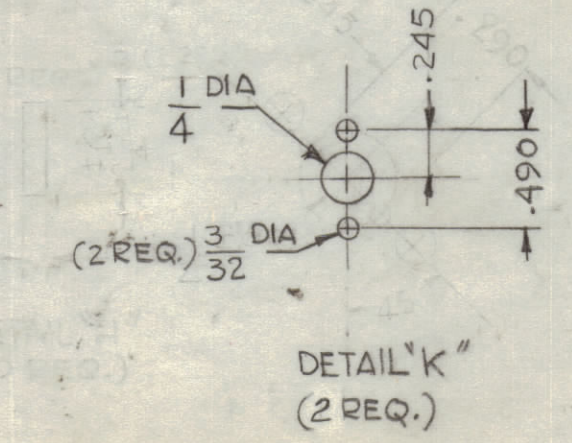
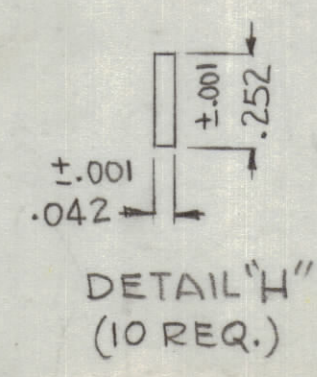
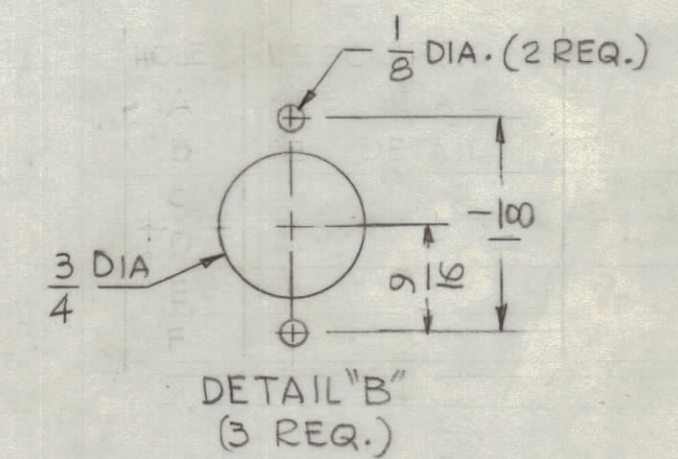
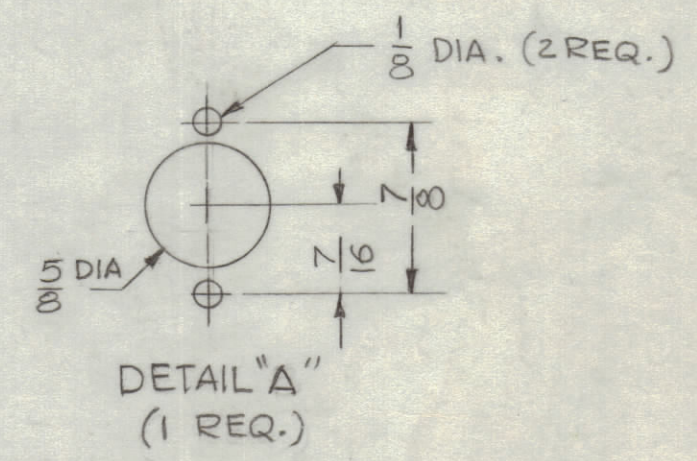


| REVISIONS | | | | | | |
|-----------|-----|--|---------|------------|--------|-----------|
| ZONE | SYM | DESCRIPTION | DATE | E.M.N. NO. | DRAFT | CHKD APPD |
| | X | EXPER. RELEASE | 4-3-64 | | E.D.L. | |
| | X1 | ONE "E" HOLE DELETED, "K" DETAIL & J HOLES ADDED | 1-10-64 | | G.D.L. | |
| | X2 | ONE "C" HOLE ADDED - "E" HOLE & ONE "C" HOLE RELOCATED - DIA "E" WAS .313 - DIA "J" WAS .180 ITEM (1) NT129-440+3 MOVED TO A4167 | 2-8-65 | | G.D.L. | |
| D-4 | X3 | 3 "C" HOLES DELETED | 3-24-65 | | G.D.L. | |
| | Ø | ORIGINAL RELEASE FOR PRODUCTION | 3-24-65 | | G.D.L. | |
| | A | ON DETAIL "K": DIM. 490 WAS 290. | 5-5-65 | 13976 | | |
| | B | "K" DETAIL ADDED | 1-24-66 | 14876 | H.V. | |



| HOLE | DESCRIPTION | REQ. |
|------|------------------|------|
| A | SEE DETAIL | 1 |
| B | SEE DETAIL | 3 |
| C | .173 DIA. | 5 |
| D | .187 DIA. | 1 |
| E | .375 DIA. | 1 |
| F | DRILL & TAP 4-40 | 9 |
| G | 11/32 DIA | 1 |
| H | SEE DETAIL | 10 |
| J | .161 - .164 DIA | 2 |
| K | SEE DETAIL | 1 |



- UNLESS OTHERWISE SPECIFIED:
1. USE MATERIAL THICKNESS FOR MAXIMUM RADIUS ON ALL BENDS
 2. ALL ANGULAR BENDS 90 DEGREES
 3. REMOVE ALL BURRS AND SHARP EDGES.

| | | |
|-----------|---------------|------------|
| QTY./UNIT | MODEL USED ON | ASS'Y. NO. |
| 1 | CHG-3 | A4167 |
| SCALE | CODE | |
| 1:1 | A | |

THE CONTENTS OF THIS DRAWING ARE THE EXCLUSIVE PROPERTY OF THE TECHNICAL MATERIEL CORP. ITS UNAUTHORIZED USE OR REPRODUCTION IN WHOLE OR IN PART IS STRICTLY FORBIDDEN.

| REQ'D. | ITEM | PART NUMBER | DESCRIPTION | SYMBOL |
|---------------------------------------|------|------------------------------|-------------|---------|
| ANGER LIST OF MATERIAL | | | | |
| MATERIAL | | THE TECHNICAL MATERIEL CORP. | | |
| .040 THK BRASS | | MAMARONECK, NEW YORK | | |
| 1/2 HARD | | TITLE | | |
| FINISH | | CHASSIS, MAIN | | |
| # | | ELECTRIC EQUIP, RF | | |
| UNLESS OTHERWISE SPECIFIED | | DRAWN | | DATE |
| DIMENSIONS ARE IN INCHES AND INCLUDE | | G.D.L. | | 4-3-64 |
| CHEMICALLY APPLIED OR PLATED FINISHES | | CHECKED | | DATE |
| | | H.D. | | 3/24/65 |
| DECIMALS | | ELECT. DES. | | DATE |
| .X ± .05 | | Anger | | 3/24/65 |
| .XX ± .01 | | MECH. DES. | | DATE |
| .XXX ± .005 | | | | |
| TOLERANCES | | SHEET | | MS-3740 |
| FRACTIONS ± 1/64 | | REV. LTR. | | B |
| ANGLES ± 0° 30' | | | | |

NOTES

MS-3740 B