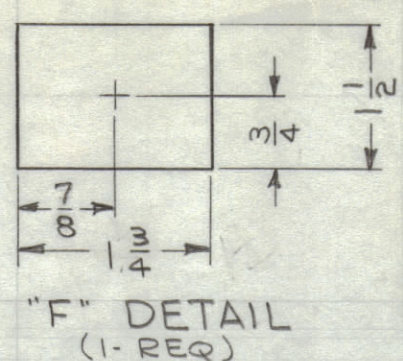
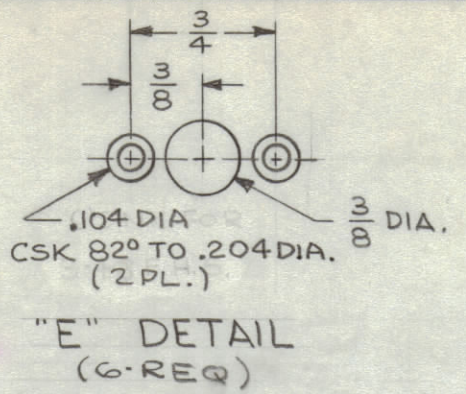
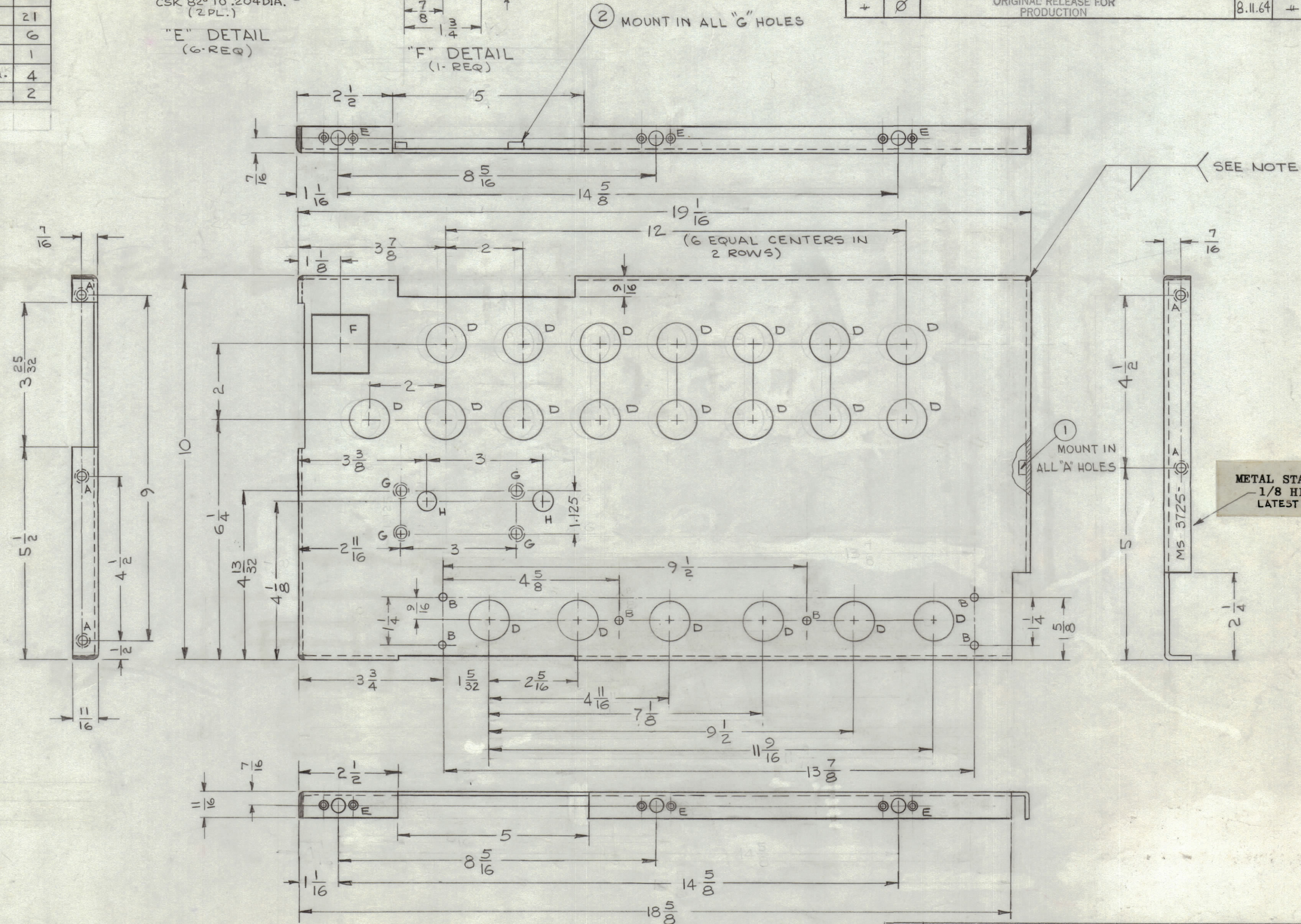


HOLE	DESCRIPTION	REQ.
A	.221-.224 DIA.	5
B	11/64 DIA.	6
C	"	"
D	1" DIA.	21
E	SEE DETAIL	6
F	SEE DETAIL	1
G	.253-.250 DIA.	4
H	1/2 DIA.	2



ZONE	SYM	DESCRIPTION	DATE	E.M.N. NO.	DRAFT	CHKD	APPD
-	X	EXPERIMENTAL RELEASE	3/17/64				
-	X'	DIMENSION 19 1/16 WAS 18 1/16, DIMENSION 18 5/8 ADDED ON BOTTOM & TOP VIEW DIM 5" WAS 4 3/4"	4-20-64			G.D.L.	
-	X2	"G" HOLES WERE CHANGED & RELOCATED "H" HOLES ADDED & 7"D" HOLES RELOCATED	1-5-64			G.D.L.	
-	Ø	ORIGINAL RELEASE FOR PRODUCTION	8.11.64				



NOTE: ALUMINUM FILLET WELD. (3 CORNERS)

- UNLESS OTHERWISE SPECIFIED:
- USE MATERIAL THICKNESS FOR MAXIMUM RADIUS ON ALL BENDS.
 - ALL ANGULAR BENDS 90°.
 - REMOVE ALL BURRS AND SHARP EDGES.
 - MOUNT INSERTS AFTER FINISHING.

1	HFR-2	
Q'TY./UNIT	MODEL USED ON	ASSY. NO.
SCALE 1:2	CODE A	

THE CONTENTS OF THIS DRAWING ARE THE EXCLUSIVE PROPERTY OF THE TECHNICAL MATERIEL CORP. ITS UNAUTHORIZED USE OR REPRODUCTION IN WHOLE OR IN PART IS STRICTLY FORBIDDEN.

4	2	NT-129-1032-4	NUT, ROUND, SWAGE TYPE	G
5	1	NT-129-832-4	NUT, ROUND, SWAGE TYPE	A
REQ'D.	ITEM	PART NUMBER	DESCRIPTION	SYMBOL

T. KRUY			LIST OF MATERIAL		
MATERIAL .081, ALUMINUM 5052-H32			THE TECHNICAL MATERIEL CORP. MAMARONECK, NEW YORK		
FINISH 6-404 IRIDITE 14-2 AL COAT			TITLE PLATE, SIDE - RIGHT		
UNLESS OTHERWISE SPECIFIED DIMENSIONS ARE IN INCHES AND INCLUDE CHEMICALLY APPLIED OR PLATED FINISHES			DRAWN <i>G. Sanger</i> DATE 12-31-63		
DECIMALS .X ± .05 XX ± .01 .XXX ± .005			CHECKED <i>G. Sanger</i> DATE 1-1-64		
FRACTIONS ± 1/64 ANGLES ± 0° 30'			ELECT. DES. <i>G. Sanger</i> DATE 3/4/64		
TOLERANCES			MECH. DES. DATE		
			FINAL APPROVAL <i>[Signature]</i> DATE		
			SHEET MS 3725		
			REV. LTR.		

NOTES

MS 3725
Ø