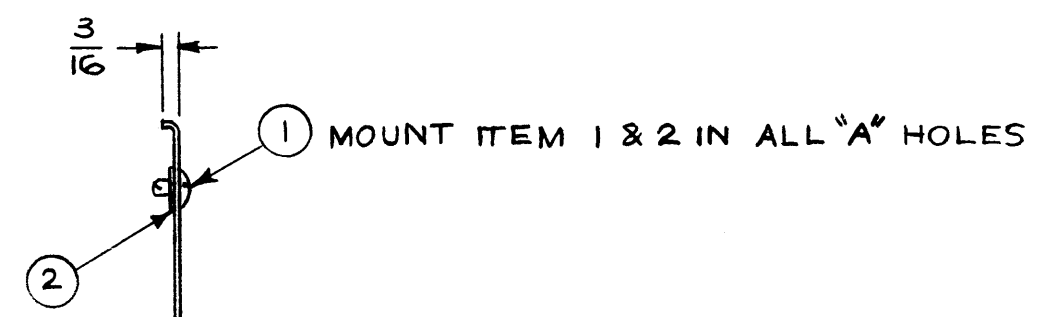
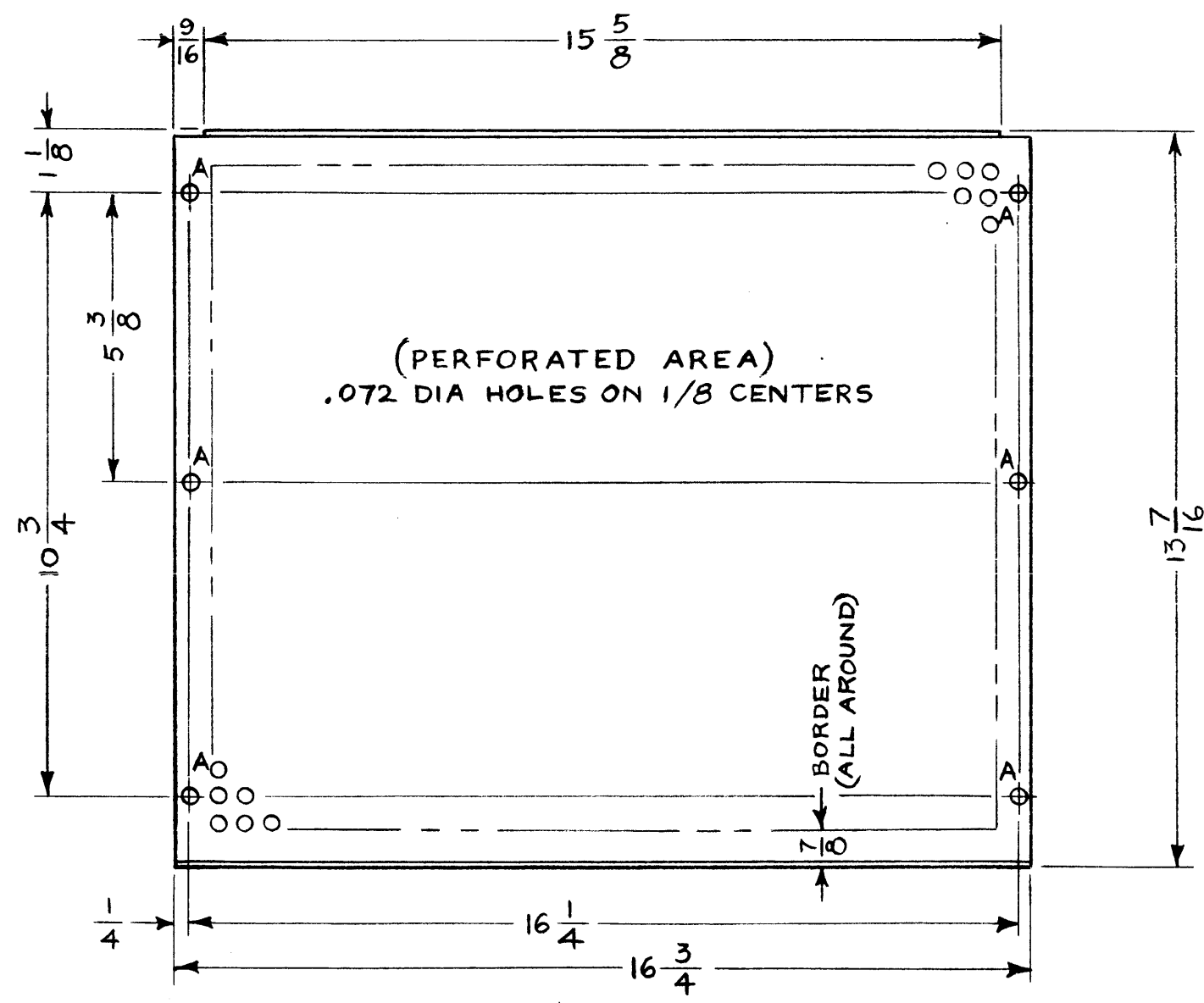


MS 3706 A

REVISIONS					
SYM	DESCRIPTION	DATE	E.M.N. NO.	DRAFT	CHKD APPD
X1	DIM 3/16 WAS 1/4; 3/8 WAS 1/4; 13-17/64 WAS 13-17/32	3-23-64	1	G. Gellman	
Ø	ORIGINAL RELEASE FOR PRODUCTION	6/25/64	Ø	A.M.	
A	ON B/M: IT.(2) WAS "FS109"; ON PICT: DIM. 13 7/16 WAS 13 17/64.	12-7-64	13065	J.L.	



LEGEND		
HOLE	DESCRIPTION	REQ'D
A	1/4 DIA	6

METAL STAMP TMC PART NO.  
1/8 HIGH GOTHIC.  
(MS 3706),  
WITH LATEST REVISION  
LETTER

**UNLESS OTHERWISE SPECIFIED:**

1. USE MATERIAL THICKNESS FOR MAXIMUM RADIUS ON ALL BENDS.
2. ALL ANGULAR BENDS 90°.
3. REMOVE ALL BURRS AND SHARP EDGES.
4. MOUNT INSERTS AFTER FINISHING.

**NOTES**

1	CSS-2	
QTY./UNIT	MODEL USED ON	ASS'Y. NO.
SCALE 1:3	CODE A	

THE CONTENTS OF THIS DRAWING ARE THE EXCLUSIVE PROPERTY OF THE TECHNICAL MATERIEL CORP. ITS UNAUTHORIZED USE OR REPRODUCTION IN WHOLE OR IN PART IS STRICTLY FORBIDDEN.

REQ'D.	ITEM	PART NUMBER	DESCRIPTION	SYMBOL
6	2	FS 109-3	RING, STUD RETAINING	A
6	1	FS 110-1	STUD, SLOTTED HEAD	A

M. GELLMAN		LIST OF MATERIAL	
MATERIAL .052 THICK 5052 -H32 ALUMINUM (PERFORATED)		THE TECHNICAL MATERIEL CORP. MAMARONECK, NEW YORK	
FINISH S404 YELLOW IRIDITE 14-2 AL COAT		TITLE COVER, TOP	
UNLESS OTHERWISE SPECIFIED DIMENSIONS ARE IN INCHES AND INCLUDE CHEMICALLY APPLIED OR PLATED FINISHES		DRAWN <i>n. Petros</i>	DATE 1-23-64
DECIMALS .X ± .05 .XX ± .01 .XXX ± .005		CHECKED <i>@</i>	DATE 6-24-64
FRACTIONS ± 1/64 ANGLES ± 0° 30'		ELECT. DES. <i>[Signature]</i>	DATE
TOLERANCES		MECH. DES. <i>[Signature]</i>	DATE 6-29-64
		FINAL APPROVAL <i>[Signature]</i> DATE	
		MS 3706 A	
		SHEET	
		REV. LTR.	