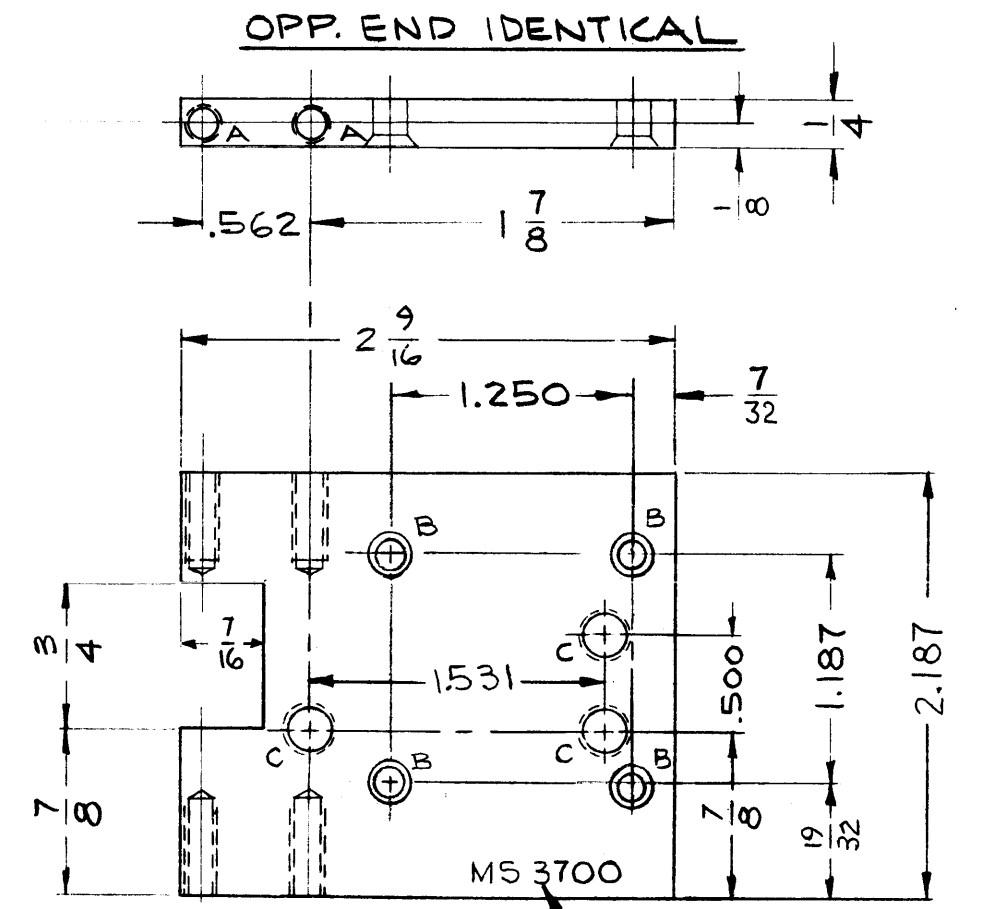


MS 3700 B

REVISIONS

SYM	DESCRIPTION	DATE	E.M.N. NO.	DRAFT	CHKD	APPD
X	EXPERIMENTAL RELEASE	3-30-64			@	
X1	"B" HOLES RELOCATED	7-31-64				TK
Ø	ORIGINAL RELEASE FOR PRODUCTION	8-14-64				
A	DN PICT. 3 "C" HOLES RELOC. ON U/O, MOD. WAS "HFR-2A" ASSY # ADD.	10-21-64	12726		@	
B	DIM 7/32 WAS 9/32	11-9-64	12887		@	



HOLE LEGEND		
HOLE	DESCRIPTION	REQD
A	DR & TAP # 6-32 x 1/2 DP.	4
B	.144 DIA. CSK 82° x .284 DIA	4
C	DR & TAP # 6-32 THRU	3

METAL STAMP TMC PART NO  
1/8 HIGH GOTHIC W/LATEST  
REVISION LETTER

NOTE:  
REMOVE ALL BURRS & SHARP  
EDGES.

NOTES

1	HFR-2	A3533
Q'TY./UNIT	MODEL USED ON	ASSY. NO.
SCALE 1:1	CODE A	
THE CONTENTS OF THIS DRAWING ARE THE EXCLUSIVE PROPERTY OF THE TECHNICAL MATERIEL CORP. ITS UNAUTHORIZED USE OR REPRODUCTION IN WHOLE OR IN PART IS STRICTLY FORBIDDEN.		

REQ'D.	ITEM	PART NUMBER	DESCRIPTION	SYMBOL
T. KRUY LIST OF MATERIAL				
MATERIAL 1/4 THK ALUMINUM 5052-H32			THE TECHNICAL MATERIEL CORP. MAMARONECK, NEW YORK	
FINISH S404 YELLOW IRIDITE				
UNLESS OTHERWISE SPECIFIED DIMENSIONS ARE IN INCHES AND INCLUDE CHEMICALLY APPLIED OR PLATED FINISHES			BRACKET, SOLENOID	
DRAWN T. Kruy		DATE 2-9-64	FINAL APPROVAL TK	
CHECKED @		DATE 5-5-64		
ELECT. DES.		DATE	MS 3700 B	
MECH. DES. T. Kruy		DATE 8-14-64		
DECIMALS .X ± .05 .XX ± .01 .XXX ± .005			TOLERANCES ± 1/64 ANGLES ± 0° 30'	
SHEET			REV. LTR.	