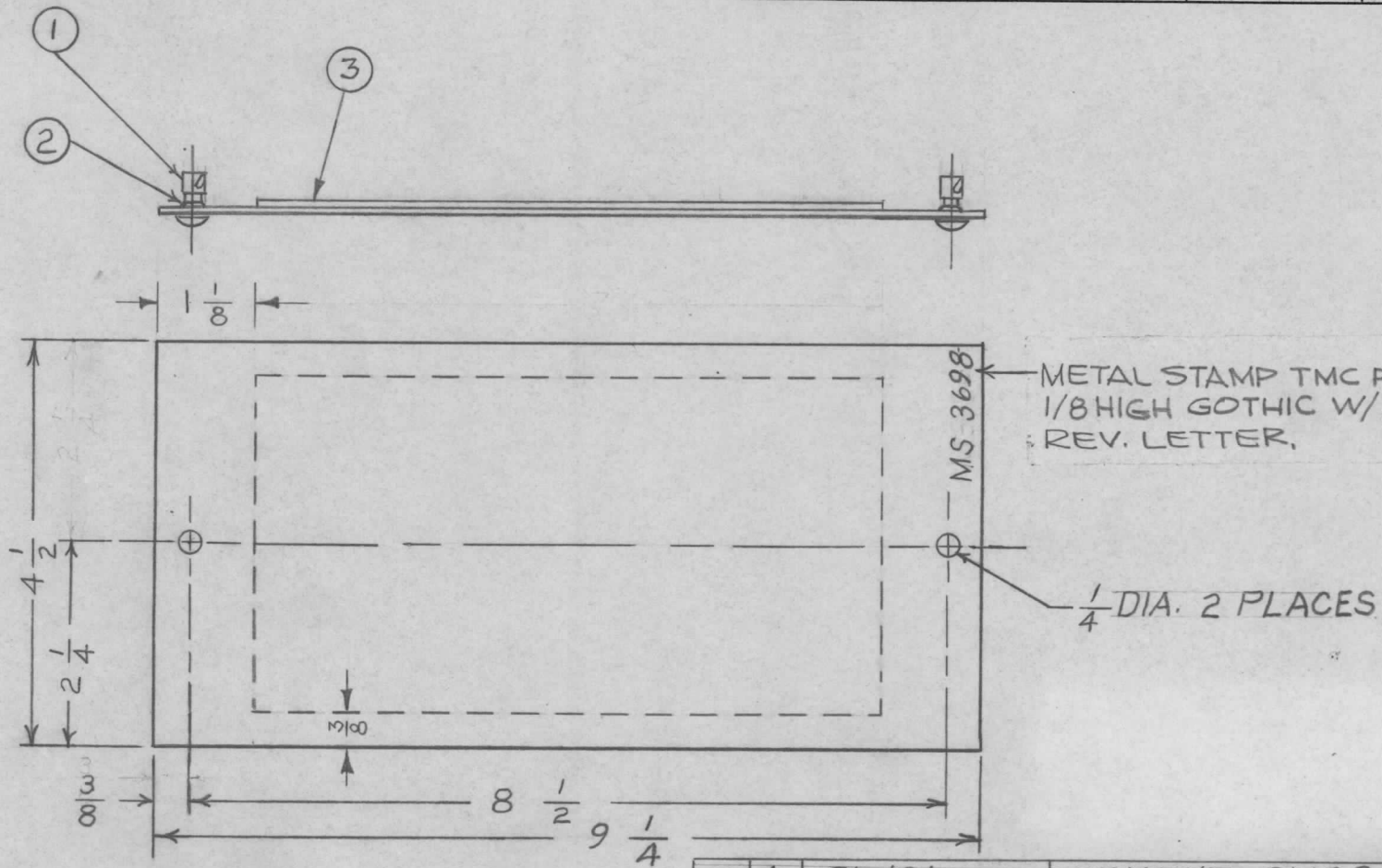


REQ. PER UNIT	USED ON			MS 3698	Ø
	MODEL	ASSY. NO.	DATE		
1	MFP-1		2/6/64		



REMOVE ALL BURRS AND SHARP EDGES

~	4	GL 101	CEMENT, PLIOBOND
1	3	IM 179-12	INSULATOR, FISH PAPER
2	2	FS 109-3	RING, STUD RETAINING
2	1	FS 110-1	STUD, SLOTTED HEAD

REQ. ITEM	PART NO.	T. AALTONEN	DESCRIPTION	SYMBOL
.063 THK.		THE TECHNICAL MATERIEL CORP.		
STOCK SIZE		MAMARONECK, NEW YORK		
ALUMINUM		COVER, BOTTOM		
MATERIAL				
5052-H32		A.M.	@	
TYPE & TEMPER		DRAWN	CHECKED	FINAL APPROVAL
HEAT TREAT. SPEC.				
5404 IRIDITE 14-2 AL-COAT				MS 3698 Ø
FINISH & SPEC. NO.		ELEC. DES. APP.	MECH. DES. APP.	

Ø	ORIG. RELEASE FOR PROD.	8-18-64	-	SRG	
X	ITEMS #3 & #4 ADDED	3.25.64		WB	
SYM	DESCRIPTION	DATE	CH. NO.	DRAFTS	CHECKER
UNLESS OTHERWISE SPECIFIED DIMENSIONS ARE IN INCHES AND INCLUDE CHEMICALLY APPLIED OR PLATED FINISHES		SCALE 1:2			
DECIMALS .X ± .05 .XX ± .01 .XXX ± .005	TOLERANCES	FRACTIONS ± 1/64 ANGLES ± 0° 30'	CODE A		