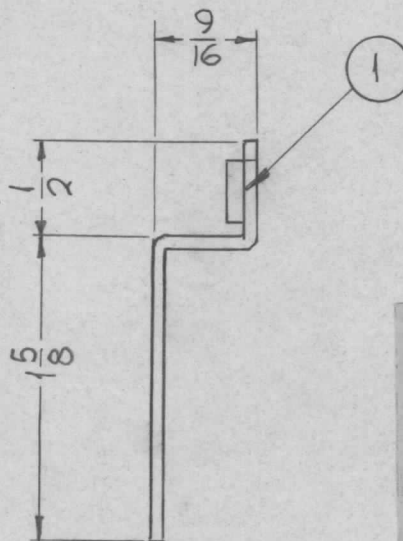
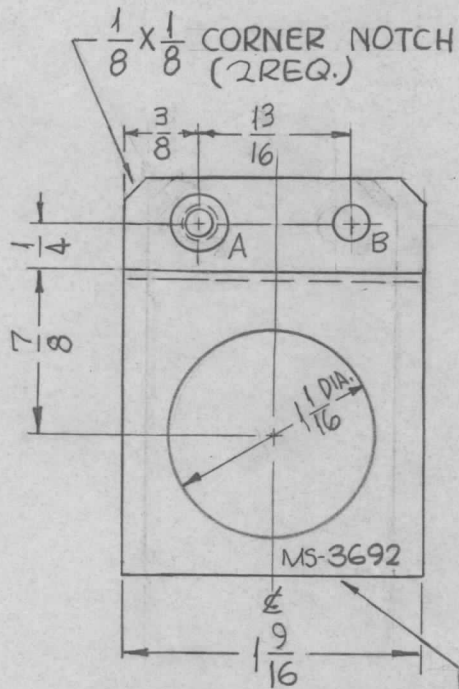


REQ. PER UNIT	USED ON			MS-3692 0
	MODEL	ASS'Y. NO.	DATE	
6	GPT-200K	AX-395	2-20-64	



HOLE:  
 A - .191 DIA. (1 REQ.)  
 B - 9/64 DIA. (1 REQ.)

METAL STAMP TMC PART NO. 1/8 HIGH GOTHIC.

- UNLESS OTHERWISE SPECIFIED:
1. USE MATERIAL THICKNESS FOR MAXIMUM RADIUS ON ALL BENDS.
  2. ALL ANGULAR BENDS 90°.
  3. REMOVE ALL BURRS AND SHARP EDGES.
  4. MOUNT INSERTS AFTER FINISHING.
  5. 1/16 RADIUS ON ALL CORNERS.

1	1	NT-129-632-3	NUT ROUND, SWAGE TYPE			
REQ. ITEM	PART NO.		F. BUDETTI DESCRIPTION		SYMBOL	
	.051 THICK		THE TECHNICAL MATERIEL CORP. MAMARONECK, NEW YORK			
	STOCK SIZE		BRACKET, RESISTOR MTG. PA. DECK			
	ALUMINUM					
	MATERIAL					
	5052-H32		SRG	aa	RDC	
	TYPE & TEMPER	HEAT TREAT. SPEC.	DRAWN	CHECKED	FINAL APPROVAL	
	S404 YELLOW IRIDITE		DB	see 2/24/64	MS-3692 0	
	FINISH & SPEC. NO.		ELEC. DES. APP.	MECH. DES. APP.		

0	ORIGINAL RELEASE	5.16.64				
X1	B HOLE WAS .171	2-24-64				
SYM	DESCRIPTION	DATE	CH. NO.	DRAFTS	CHECKER	ENG. APP.
UNLESS OTHERWISE SPECIFIED DIMENSIONS ARE IN INCHES AND INCLUDE CHEMICALLY APPLIED OR PLATED FINISHES		SCALE	1"=1"			
DECIMALS .X ± .05 .XX ± .01 .XXX ± .005	TOLERANCES	FRACTIONS ± 1/64 ANGLES ± 0° 30'	CODE			