

7

6

5

4

3

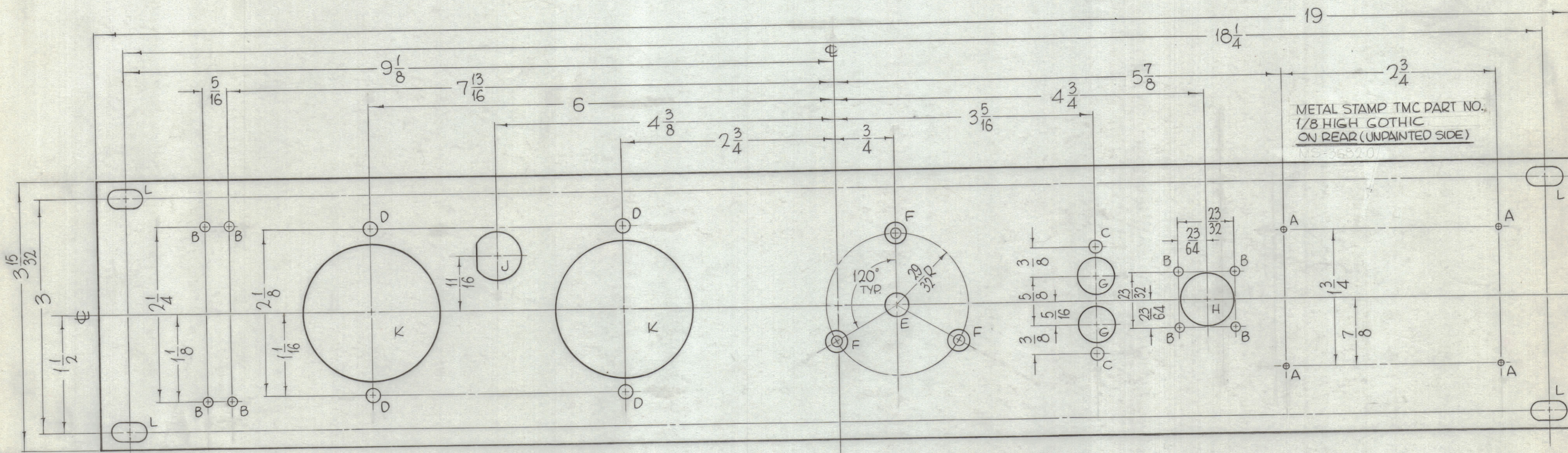
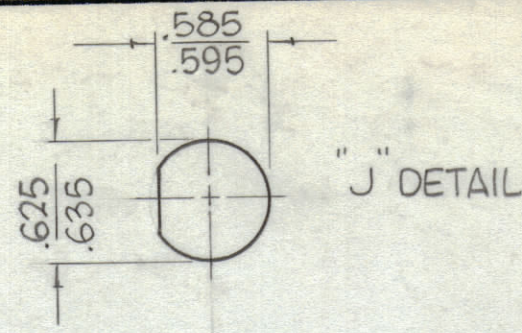
2

1

REVISIONS

ZONE	SYM	DESCRIPTION	DATE	E.M.N. NO.	DRAFT	CHKD	APPD
0		ORIGINAL RELEASE FOR PRODUCTION	5/1/64				

HOLES	REQ.	HOLES	REQ.
A- NO.47 DRILL	4	G-15/32 DIA.	2
B- 1/8 DIA.	8	H- 53/64 DIA.	1
C- 11/64 DIA.	2	J- SEE DETAIL	1
D- 3/16 DIA.	4	K- 1-3/4 DIA.	2
E- 5/16 DIA.	1	L- 1/4 X 29/64 SLOT	4
F- DRILL .144 THRU, C'SK 82° X.284 DIA.	3		



FRONT VIEW SHOWN

MACHINING:

- MILL ALL EDGES.
- HOLES MUST BE DRILLED, UNLESS OTHERWISE SPECIFIED.
- LATERAL BOW OF PANEL MUST BE KEPT TO .031 TOLERANCE.
- PANEL MUST BE FREE OF ALL MACHINING MARKS, GOUGES AND SCRATCHES. IF NECESSARY, SAND FRONT OF PANEL WITH NO. 120 GRIT SANDPAPER.

FINISH NOTES:

- S404 - IRIDITE 14-2 AL-COAT.
- S114 - ZINC CHROMATE PRIMER) FRONT AND
- S115 - SMOOTH GRAY ENAMEL) EDGES ONLY

NOTES

THE CONTENTS OF THIS DRAWING ARE THE EXCLUSIVE PROPERTY OF THE TECHNICAL MATERIEL CORP. ITS UNAUTHORIZED USE OR REPRODUCTION IN WHOLE OR IN PART IS STRICTLY FORBIDDEN.

REF-TMC DWG.LD-1386

REQ'D.	ITEM	PART NUMBER	DESCRIPTION	SYMBOL
F. BUDETTI LIST OF MATERIAL				
MATERIAL			THE TECHNICAL MATERIEL CORP. MAMARONECK, NEW YORK	
3/16 THICK, ALUMINUM, 2024 - T-3			PANEL, FRONT	
FINISH			SEE NOTES	
UNLESS OTHERWISE SPECIFIED DIMENSIONS ARE IN INCHES AND INCLUDE CHEMICALLY APPLIED OR PLATED FINISHES			DRAWN John C Biele DATE 1-29-64 CHECKED JCB DATE ELECT. DES. DATE MECH. DES. DATE	
DECIMALS .X ± .05 .XX ± .01 .XXX ± .005			FINAL APPROVAL RJC DATE MS-3682-0 SHEET 1	
FRACTIONS ± 1/64 ANGLES ± 0° 30'			REV. LTR.	

MS-3682-0