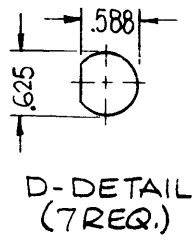
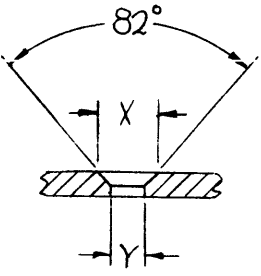


HOLES: REQ.
 A-13/64 DIA. 6
 B-15/32 DIA. 2
 C-11/16 DIA. 9

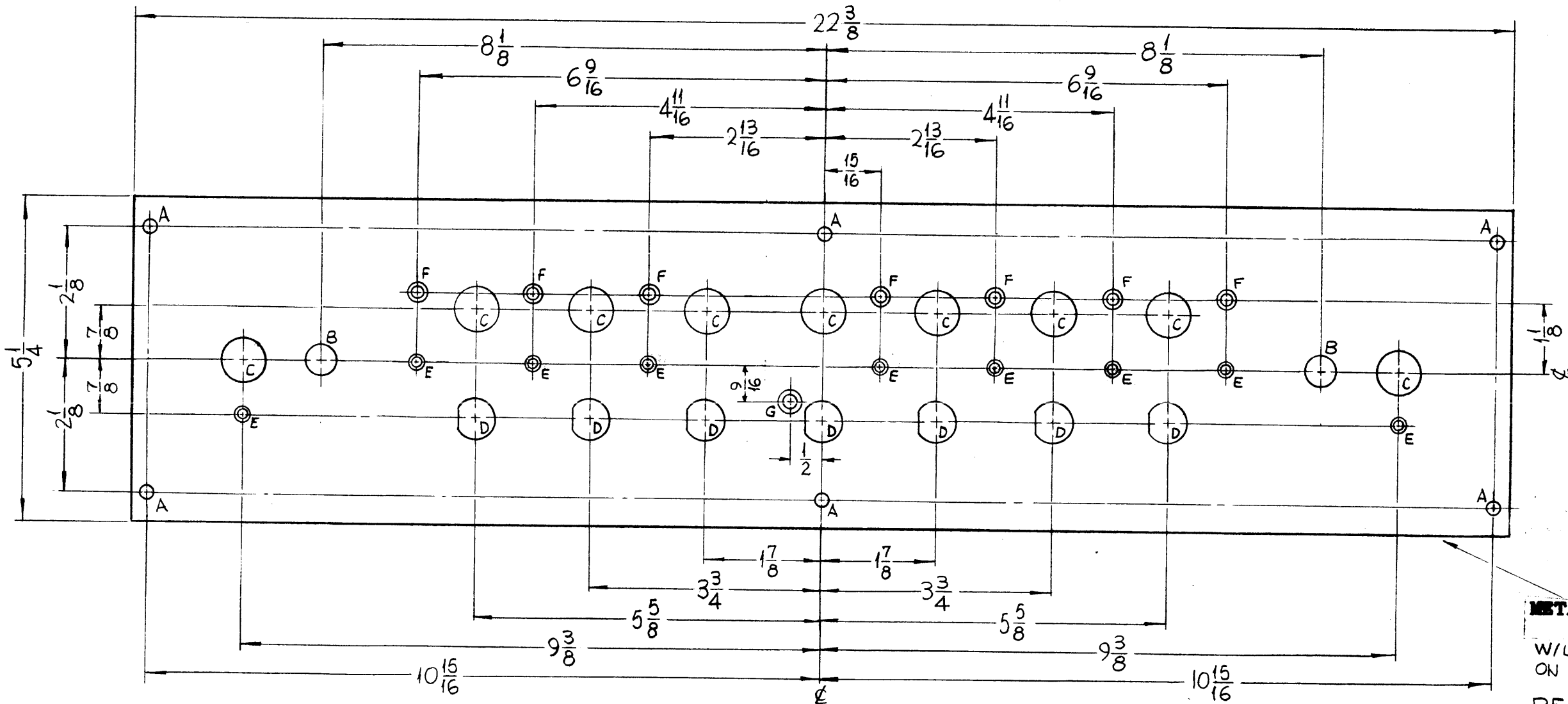


HOLE	X	Y	REQ.
E	.230	.120	9
F	.284	.144	7
G	.337	.169	1



MS-3676 Ø

REVISIONS						
SYM	DESCRIPTION	DATE	E.M.N. NO.	DRAFT	CHKD	APPD
Ø	ORIGINAL RELEASE FOR PRODUCTION	6-9-65	-M-	JC		



METAL STAMP TMC PART NO
 1/8 HIGH GOTHIC.
 W/LATEST REV. LETTER.
 ON REAR
 REF: LD-1377

FINISH NOTES:
 1. 8404 - IRIDITE 14-2 AL-COAT.
 2. 814 - ZINC CHROMATE PRIMER) FRONT AND
 3. 8520 - BLUE-GREY TEXTURED VINYL) EDGES ONLY
 PAINT.

NOTES

1	TER-100K	A3199
Q'TY./UNIT	MODEL USED ON	ASS'Y. NO.
SCALE	CODE	
1/2"=1"		

THE CONTENTS OF THIS DRAWING ARE THE EXCLUSIVE PROPERTY OF THE TECHNICAL MATERIEL CORP. ITS UNAUTHORIZED USE OR REPRODUCTION IN WHOLE OR IN PART IS STRICTLY FORBIDDEN.

REQ'D.	ITEM	PART NUMBER	DESCRIPTION	SYMBOL
F. BUDETTI LIST OF MATERIAL				
MATERIAL			THE TECHNICAL MATERIEL CORP.	
1/8 THICK ALUMINUM			MAMARONECK, NEW YORK	
5052-H32			TITLE	
FINISH			SUB, PANEL FRONT	
SEE NOTE			DRAWN SRG	
UNLESS OTHERWISE SPECIFIED			DATE 1-8-64	
DIMENSIONS ARE IN INCHES AND INCLUDE			CHECKED J.R.S. JCB	
CHEMICALLY APPLIED OR PLATED FINISHES			DATE 6-9-65	
DECIMALS			ELECT. DES.	
.X ± .05			DATE	
.XX ± .01			MECH. DES.	
.XXX ± .005			DATE	
TOLERANCES			FINAL APPROVAL	
FRACTIONS			DATE	
± 1/64			MS-3676	
ANGLES			SHEET	
± 0° 30'			REV. LTR.	