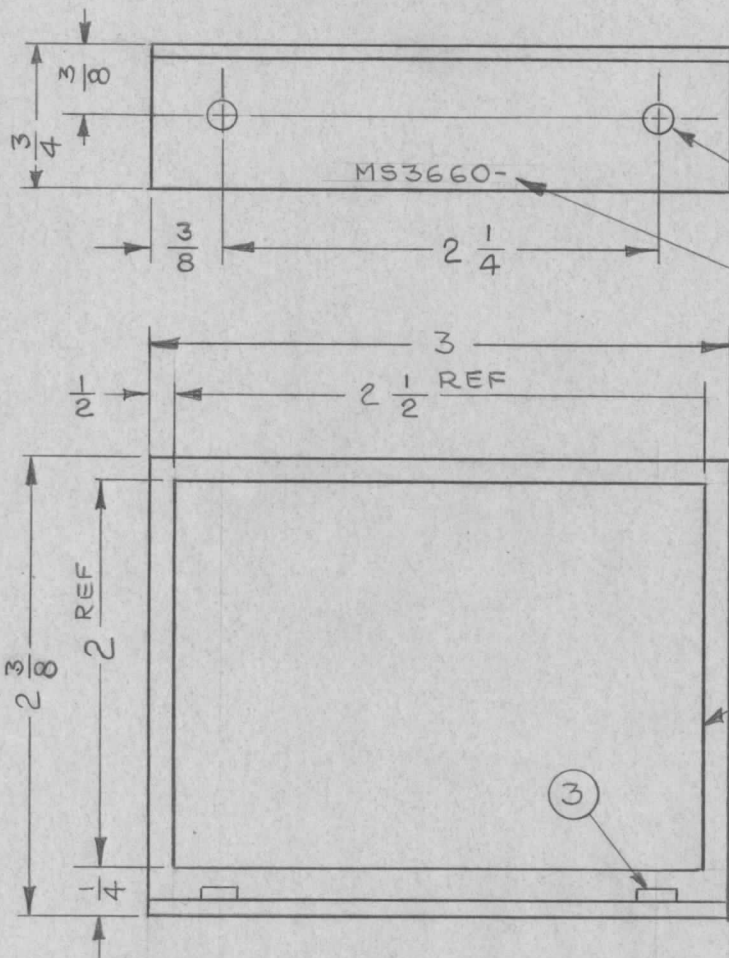


REQ. PER UNIT	USED ON			MS3660	Ø
	MODEL	ASS'Y. NO.	DATE		
	BSU-1				
	BPS(-)-1				



.191-.194 DIA.
(2 PLACES)

METAL STAMP
TMC PART NO.,
WITH LATEST
REVISION LETTER.

UNLESS OTHERWISE SPECIFIED:

1. USE MATERIAL THICKNESS FOR MAXIMUM RADIUS ON ALL BENDS.
2. ALL ANGULAR BENDS 90°.
3. REMOVE ALL BURRS AND SHARP EDGES.
4. MOUNT INSERTS AFTER FINISHING.

REF: LD1565

2	3	NT-129-632-4	NUT, PLAIN SPLINE TYPE
X	2	GL-101	CEMENT, PLIOBOND
X	1	IM-179-4	INSULATION SHEET ELEC

Ø	ORIGINAL RELEASE FOR PRODUCTION	10.29.64	Ø	g.f.		
X	EXPER. RELEASE	7.13.64		hjb		
SYM	DESCRIPTION	DATE	CH. NO.	DRAFTS	CHECKER	ENG. APP.
UNLESS OTHERWISE SPECIFIED DIMENSIONS ARE IN INCHES AND INCLUDE CHEMICALLY APPLIED OR PLATED FINISHES		SCALE				
DECIMALS .X ± .05 .XX ± .01 .XXX ± .005		FRACTIONS ± 1/64 ANGLES ± 0° 30'		CODE A		
TOLERANCES						

REQ. ITEM	PART NO.	M. GELLMAN	DESCRIPTION	SYMBOL
	.081 THK	THE TECHNICAL MATERIEL CORP. MAMARONECK, NEW YORK		
	ALUMINUM	BRACKET, SHIELD-METER		
MATERIAL				
5052-H32		hjb 7.13.64	@ 10-29-64	RJC
TYPE & TEMPER	HEAT TREAT. SPEC.	DRAWN	CHECKED	FINAL APPROVAL
YELLOW IRIDITE				
FINISH & SPEC. NO.		ELEC. DES. APP.	MECH. DES. APP.	MS3660 Ø