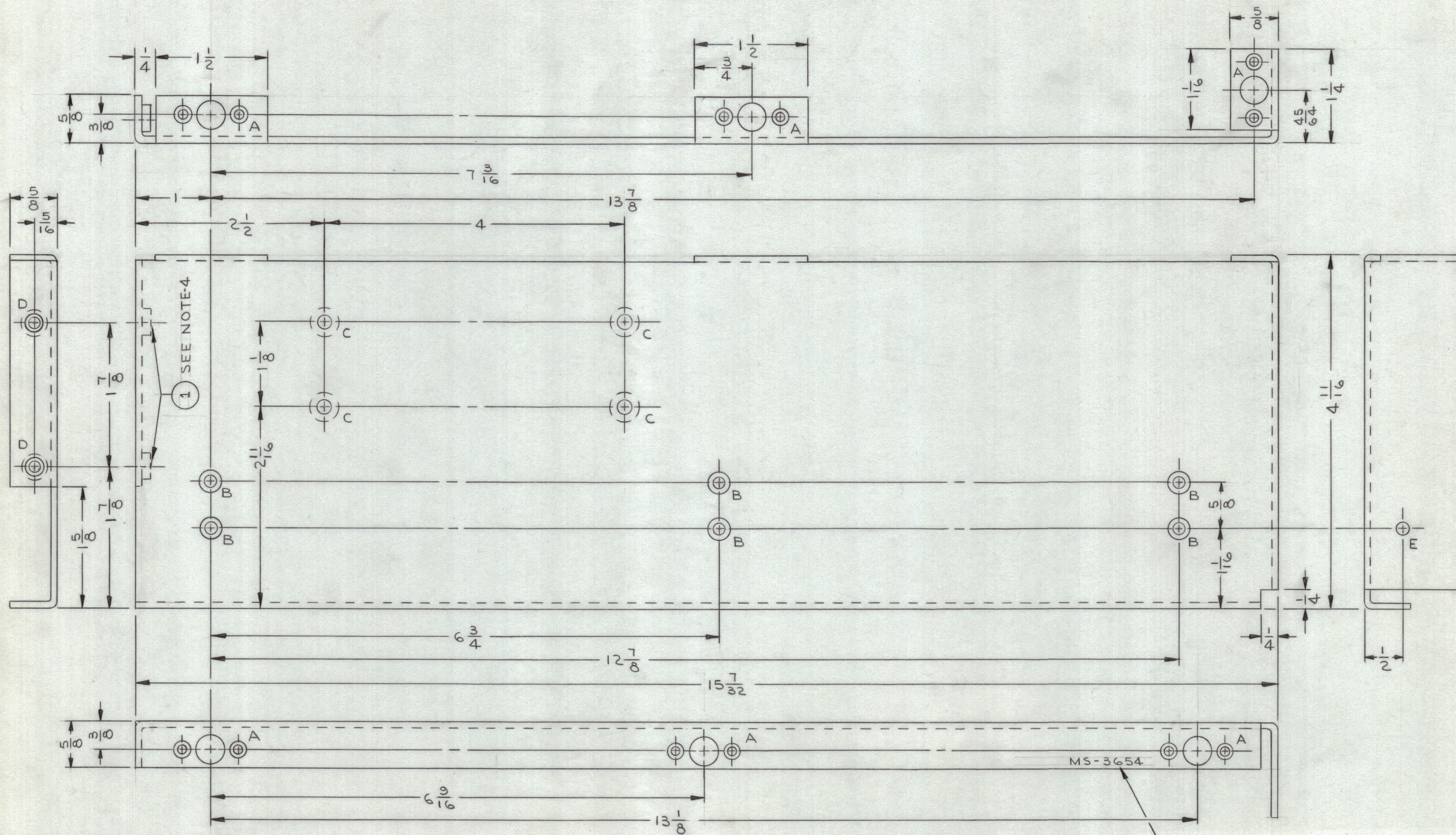


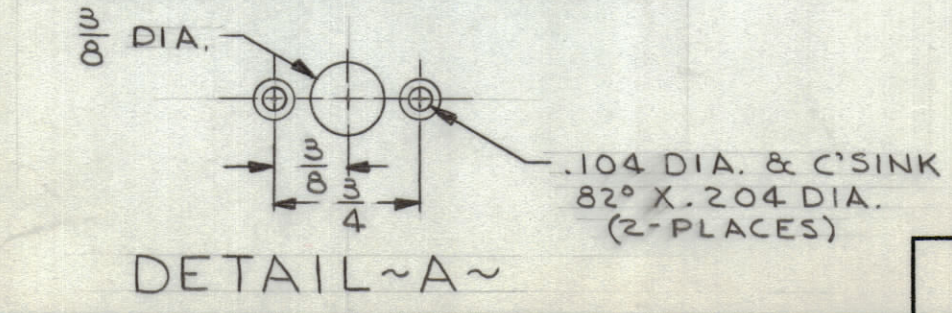
REVISIONS						
ZONE	SYM	DESCRIPTION	DATE	E.M.N. NO.	DRAFT	CHKD
G4	X1	1 1/2 FLANGE WIDTH DIM. WAS 2 1/2.	2/4/64		JL	
G7		ORIGINAL RELEASE FOR PRODUCTION	10-29-64		RZ	



HOLE LEGEND		
HOLE	DESCRIPTION	REQ'D
A	SEE DETAIL	6
B	.144 DIA. & C'SINK 82° X .284 DIA.	6
C	.196 DIA. & C'SINK 82° X .390 DIA.	4
D	.250 - .253 DIA.	2
E	5/32 DIA.	1

UNLESS OTHERWISE SPECIFIED:

1. USE MATERIAL THICKNESS FOR MAXIMUM RADIUS ON ALL BENDS.
2. ALL ANGULAR BENDS 90°.
3. REMOVE ALL BURRS AND SHARP EDGES.
4. MOUNT INSERTS AFTER FINISHING.



NOTES

1	BPS(-)-1	
QTY./UNIT	MODEL USED ON	ASS'Y. NO.
SCALE	CODE	
1:1		

2	1	NT-129-1032-4	NUT, PLAIN SPLINE	
REQ'D.	ITEM	PART NUMBER	DESCRIPTION	SYMBOL
M. GELLMAN LIST OF MATERIAL				
MATERIAL .081 THK ALUMINUM 5052-H32			THE TECHNICAL MATERIEL CORP. MAMARONECK, NEW YORK	
FINISH YELLOW IRIDITE PER TMC SPEC S-404			TITLE PLATE, SIDE-RIGHT	
UNLESS OTHERWISE SPECIFIED DIMENSIONS ARE IN INCHES AND INCLUDE CHEMICALLY APPLIED OR PLATED FINISHES			DRAWN J. LESHINSKI	DATE 12/20/63
DECIMALS .X ± .05 .XX ± .01 .XXX ± .005			CHECKED A. Turan	DATE 3/7/64
FRACTIONS ± 1/64 ANGLES ± 0° 30'			ELECT. DES.	DATE 10-29-64
TOLERANCES			MECH. DES.	DATE

METAL STAMP TMC PART NO.
1/8 HIGH GOTHIC.
WITH LATEST REV. LETTER

MS-3654
Ø