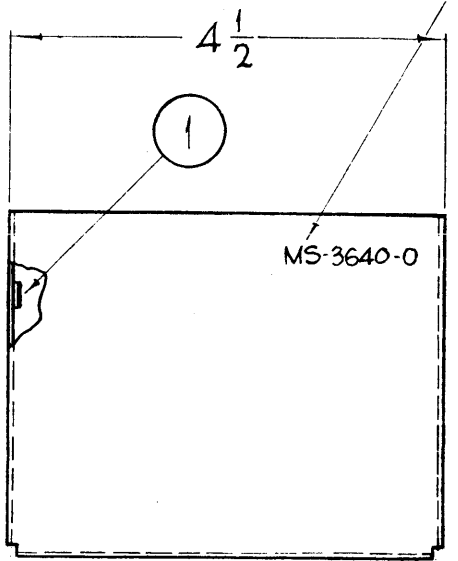
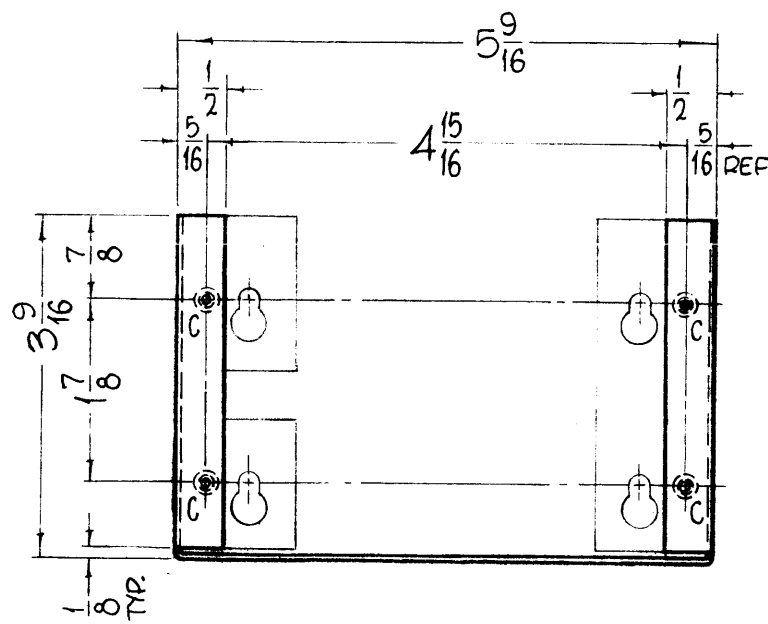
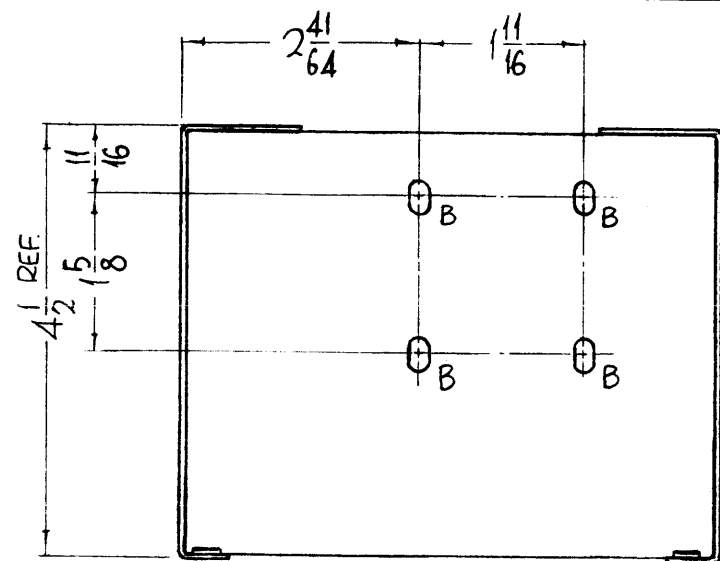
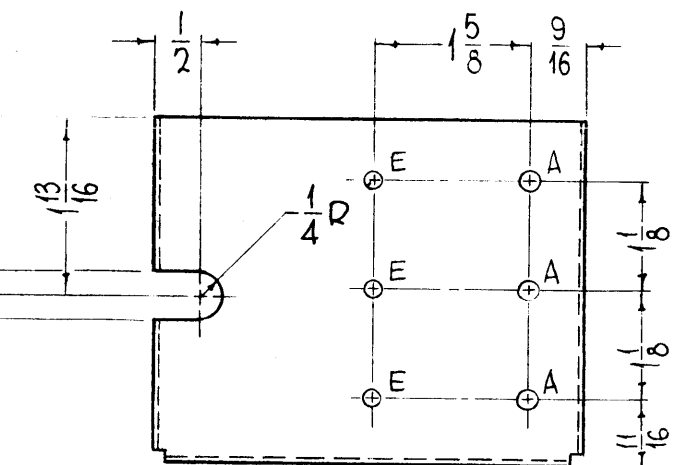
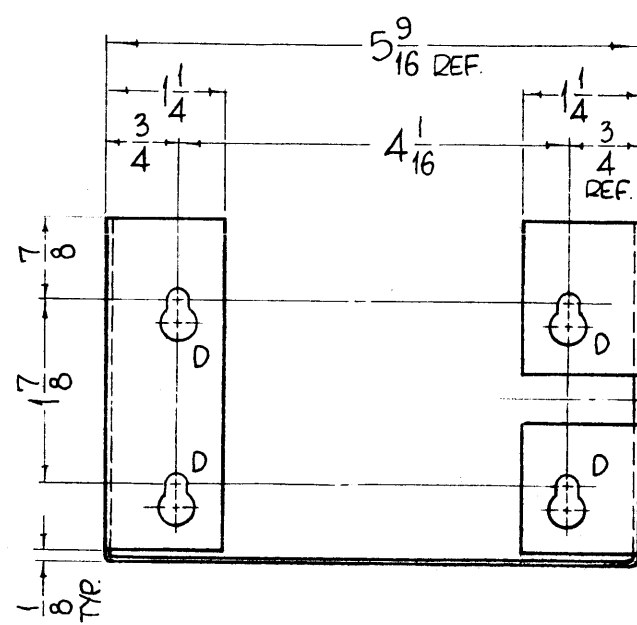


HOLES - A-11/64 DIA. 3 REQ., B-11/64 X 11/32 SLOT 4 REQ., C-.191 MIN., .194 MAX. DIAS. 4 REQ., D-7/64 R 1/4 3/16 R 4 REQ., E-9/64 DIA 3 REQ.



METAL STAMP TMC PART NO. 1/8 HIGH GOTHIC.



MS-3640-0

REVISIONS						
SYM	DESCRIPTION	DATE	E.M.N. NO.	DRAFT	CHKD	APPD
0	ORIGINAL RELEASE FOR PRODUCTION	3/23/64				

UNLESS OTHERWISE SPECIFIED:

1. USE MATERIAL THICKNESS FOR MAXIMUM RADIUS ON ALL BENDS.
2. ALL ANGULAR BENDS 90°.
3. REMOVE ALL BURRS AND SHARP EDGES.
4. MOUNT INSERTS AFTER FINISHING.

NOTES

REF-TMC DWG. LD-1258

1	GPT-200K (AX-395)	A-3478
Q'TY./UNIT	MODEL USED ON	ASS'Y. NO.
SCALE	CODE	
#	A	

THE CONTENTS OF THIS DRAWING ARE THE EXCLUSIVE PROPERTY OF THE TECHNICAL MATERIEL CORP. ITS UNAUTHORIZED USE OR REPRODUCTION IN WHOLE OR IN PART IS STRICTLY FORBIDDEN.

4	1	NT-129-632-4	NUT, ROUND, SWAGE TYPE	
REQ'D.	ITEM	PART NUMBER	DESCRIPTION	SYMBOL
F. BUDETTI LIST OF MATERIAL				
MATERIAL			THE TECHNICAL MATERIEL CORP.	
.064 THICK ALUMINUM, 5052-H-32			MAMARONECK, NEW YORK	
FINISH			TITLE	
S-404-IRIDITE, 14-2-AL-COAT			SHIELD, SHORTING RELAY	
UNLESS OTHERWISE SPECIFIED DIMENSIONS ARE IN INCHES AND INCLUDE CHEMICALLY APPLIED OR PLATED FINISHES			DRAWN	DATE
			John C. Biale	2-11-64
			CHECKED	DATE
			qa jcs	3-2-64
			MECH. DES.	DATE
			me	2/19/64
			FINAL APPROVAL	DATE
			Roe	3/23/64
			MS-3640-0	
			SHEET	
			REV. LTR.	

DECIMALS .X ± .05 .XX ± .01 .XXX ± .005 FRACTIONS ± 1/64 ANGLES ± 0° 30'