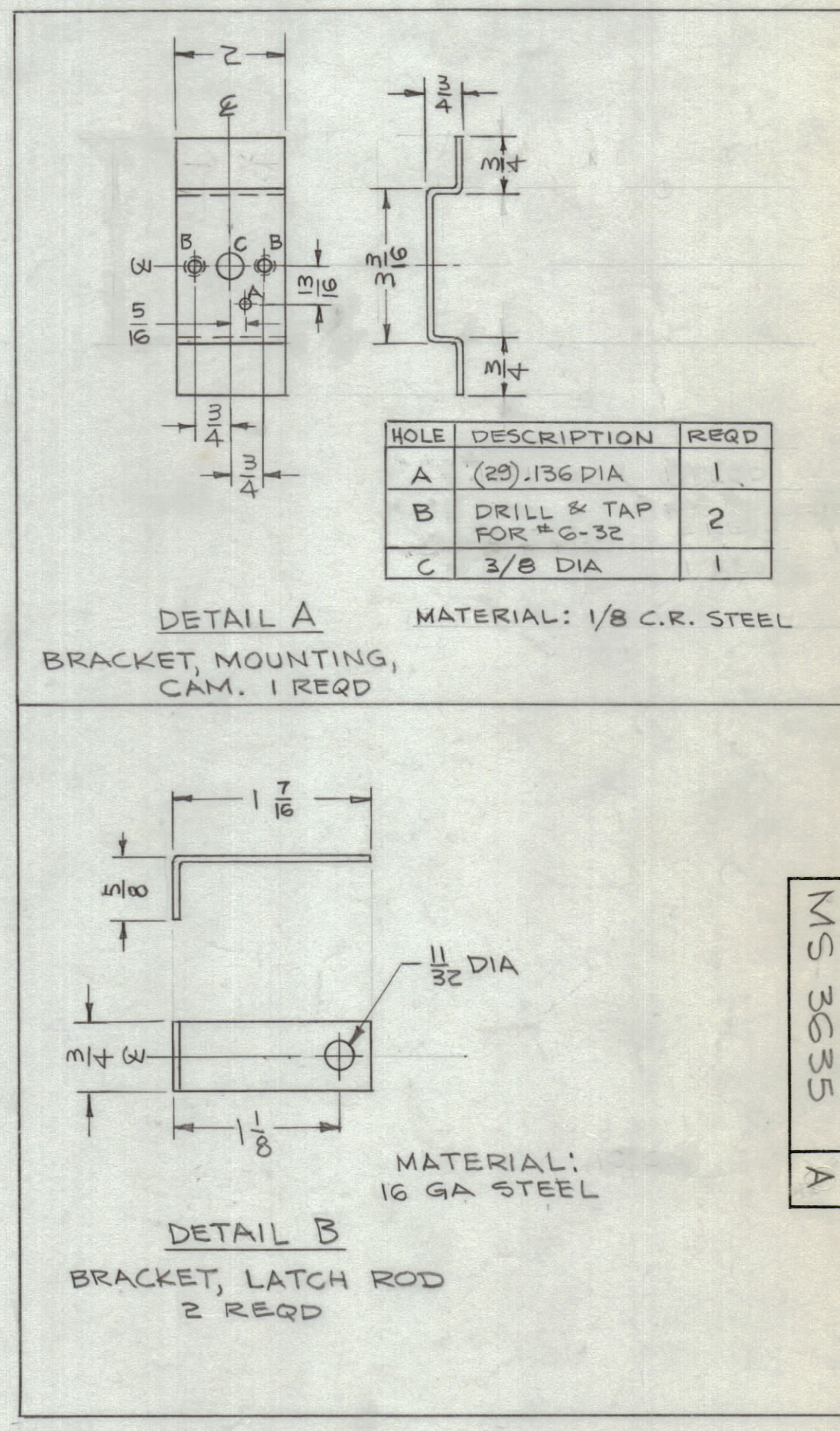
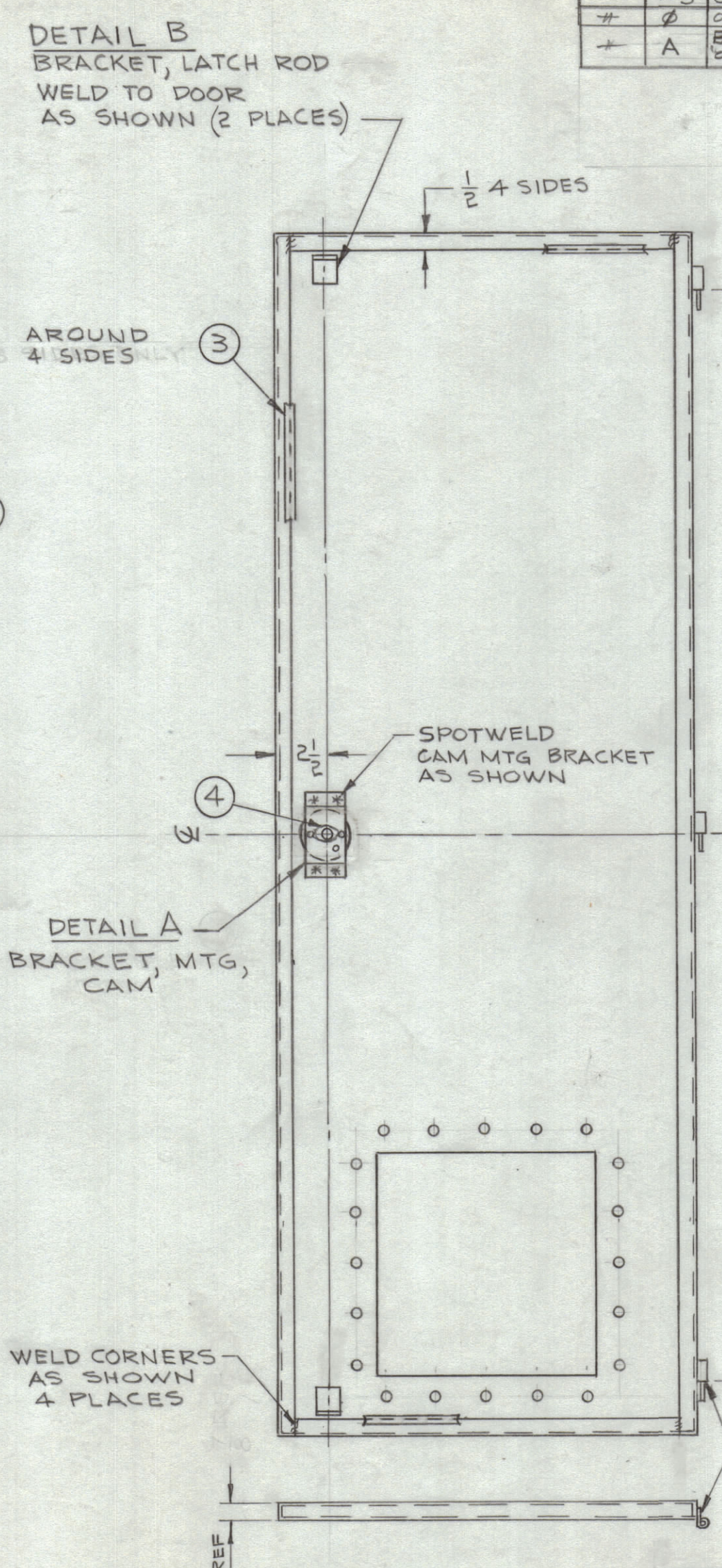
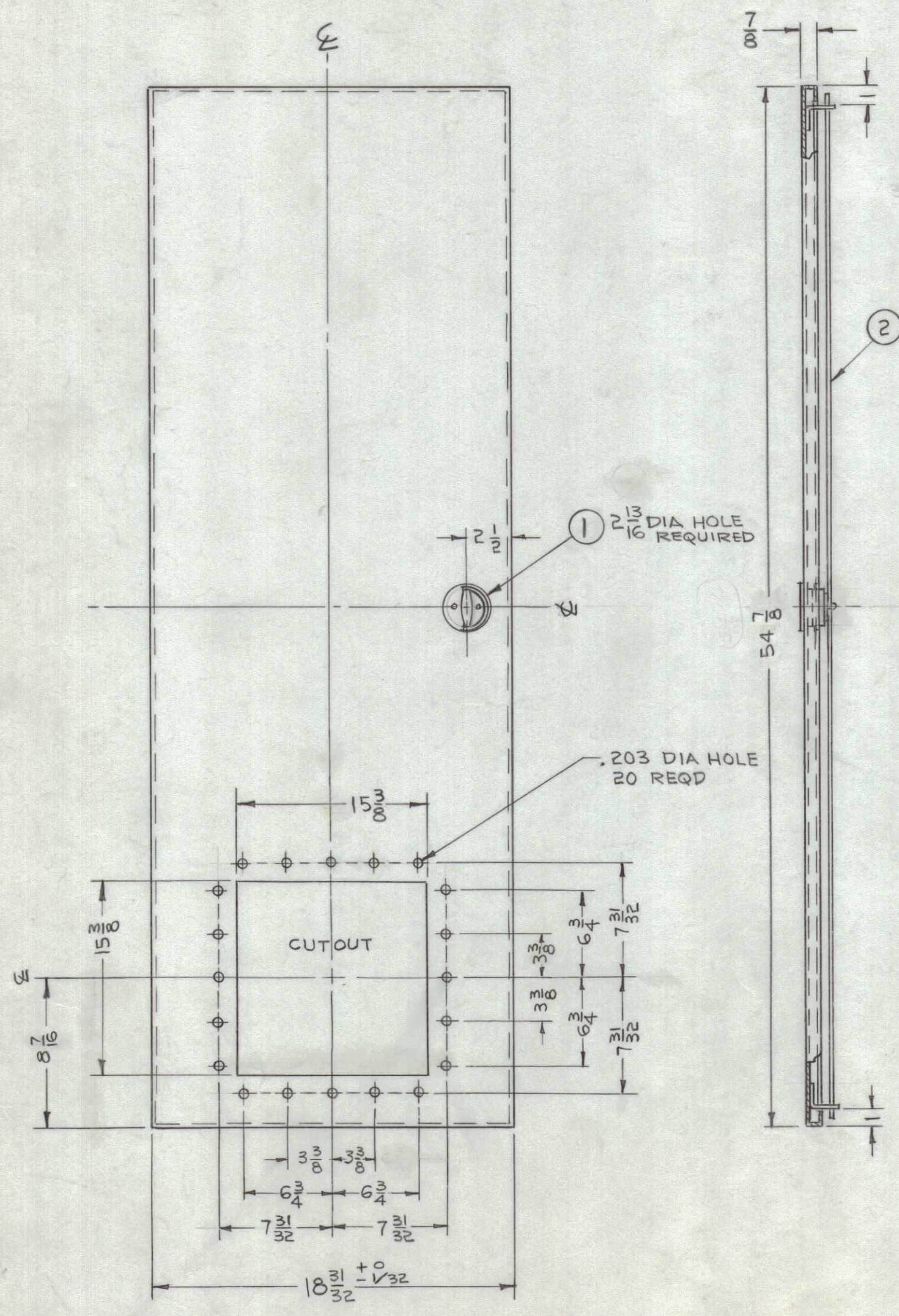


REVISIONS						
ZONE	SYM	DESCRIPTION	DATE	E.M.N. NO.	DRAFT	CHKD
C-7	X1	8-3/8 DIM TO C OF CUTOUT WAS 8	11-21-63		WJ	GT
	X2	DIMS 25, 8 7/16 & 54 7/8 WERE 18 1/2, 8 3/8 & 41 2 1/2	11-21-63		JG	GT
	X3	S-520 WAS S-254; EAK-31C ADDED ON ITEM 3, 92 7/8" ADDED	6-4-64		JG	
	Ø	ORIGINAL RELEASE FOR PRODUCTION	6-8-64		JG	
	A	BM ITEM 3 WAS 92 7/8, GA144-122 ON PICT, ITEM 3 WAS AROUND 3 SIDES ONLY	10-2-64	12501	JL	@



1. ALL ANGULAR BENDS 90°
2. REMOVE ALL BURRS & SHARP EDGES.
3. DOOR MUST BE FLAT OR 2° OVBEND TOWARD INSIDE, TOP & BOTTOM

QTY./UNIT	MODEL USED ON	ASSY. NO.
1	RAK-31C	A-3206-2
1	RAK-31A	A-3206-1
	SCALE	CODE
	NONE	A

THE CONTENTS OF THIS DRAWING ARE THE EXCLUSIVE PROPERTY OF THE TECHNICAL MATERIEL CORP. ITS UNAUTHORIZED USE OR REPRODUCTION IN WHOLE OR IN PART IS STRICTLY FORBIDDEN.

1	4	PO-186	CAM, CATCH, 2 POINT	
1	3	GA-144-144	GASKET, EXTRUDED	
2	2	PM-531-B-20.75	ROD, DOOR LATCH	
1	1	HA-114-1	HANDLE	
REQ'D.	ITEM	PART NUMBER	DESCRIPTION	SYMBOL
I. JOHNSON LIST OF MATERIAL				
MATERIAL 14 GA STEEL UNLESS OTHERWISE NOTED			THE TECHNICAL MATERIEL CORP. MAMARONECK, NEW YORK	
FINISH S-114 ZINC CHROMATE PR S-520TMC BLUE GREY			TITLE DOOR, REAR RAK-31A	
SCALE NONE	CODE A	UNLESS OTHERWISE SPECIFIED DIMENSIONS ARE IN INCHES AND INCLUDE CHEMICALLY APPLIED OR PLATED FINISHES		DATE 11-19-63
TOLERANCES DECIMALS ± .05 XX ± .01 XXX ± .005		FRACTIONS ± 1/64 ANGLES ± 0° 30'		FINAL APPROVAL DATE 6-4-64
		DRAWN CHECKED ELECT. DES MECH. DES		DATE 11-19-63 6-4-64 6-9-64 6-4-64
NOTES		SHEET		REV. LTR. A

MS 3635  
A