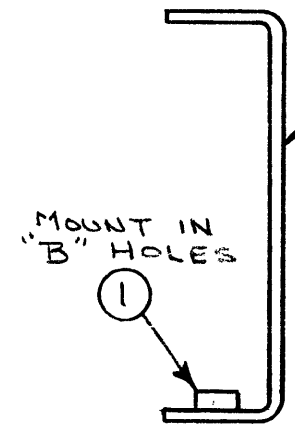
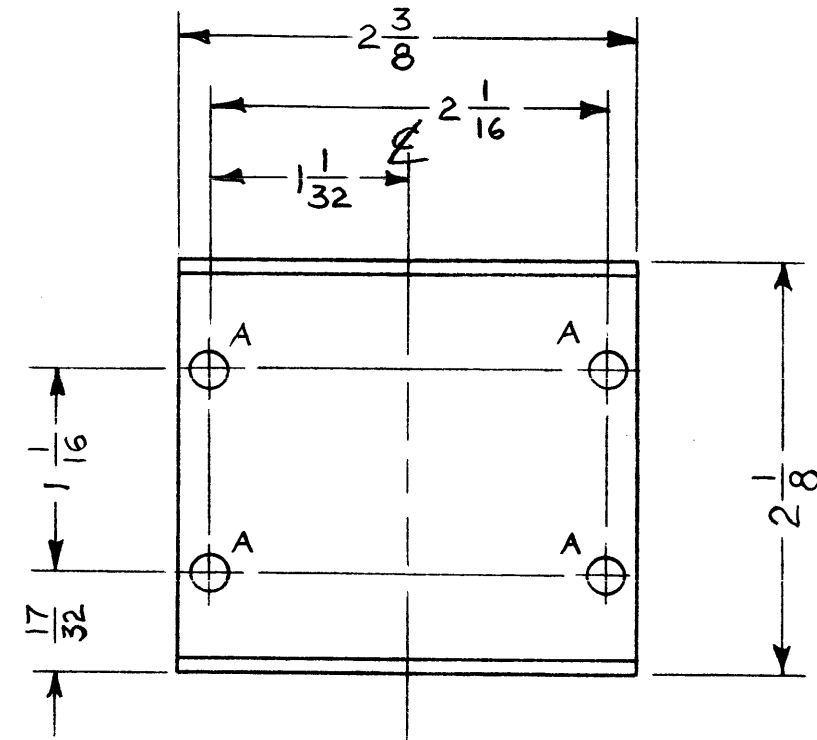


MS-36250

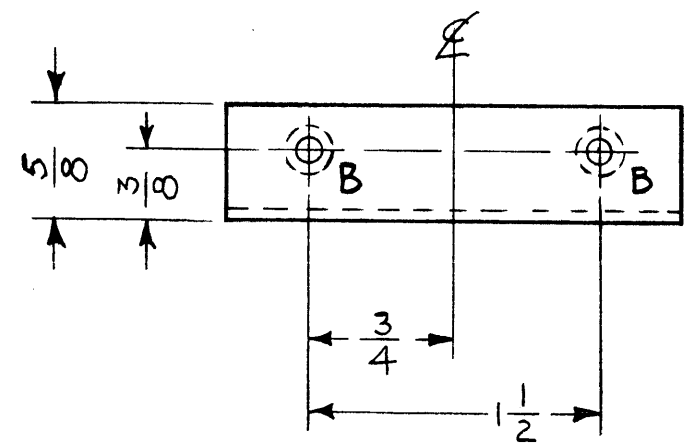
REVISIONS

SYM	DESCRIPTION	DATE	E.M.N. NO	DRAFT	CHKD	APPD
0	ORIGINAL RELEASE FOR PRODUCTION	4/24/64	0	A.M.	@	



METAL STAMP TMC PART NO.  
1/8 HIGH GOTHIC.

LEGEND		
HOLE	DESCRIPTION	REQD
A	.201 DIA	4
B	.191-.194 DIA	2



UNLESS OTHERWISE SPECIFIED:

1. USE MATERIAL THICKNESS FOR MAXIMUM RADIUS ON ALL BENDS.
2. ALL ANGULAR BENDS 90°.
3. REMOVE ALL BURRS AND SHARP EDGES.
4. MOUNT INSERTS AFTER FINISHING.

REF: LD-1425 & LD-1426

2	1	NT-129-632-4	NUT, ROUND, SWAGE TYPE	B
REQ'D.	ITEM	PART NUMBER	DESCRIPTION	SYMBOL

AALTONEN		LIST OF MATERIAL	
MATERIAL .080 THICK 5052-H32 ALUMINUM		THE TECHNICAL MATERIEL CORP. MAMARONECK, NEW YORK	
FINISH S404 YEL IRIDITE 14-2AL COAT		TITLE BRACKET, MOUNTING CAPACITOR	
UNLESS OTHERWISE SPECIFIED DIMENSIONS ARE IN INCHES AND INCLUDE CHEMICALLY APPLIED OR PLATED FINISHES		DRAWN <i>R. Petrus</i> CHECKED <i>@</i> ELECT. DES <i>RJK</i> MECH. DES <i>[Signature]</i>	DATE 11-15-63 DATE 4-23-64 DATE 4/23/64 DATE 4/23/64
DECIMALS .X ± .05 .XX ± .01 .XXX ± .005		TOLERANCES FRACTIONS ± 1/64 ANGLES ± 0° 30'	
Q'TY./UNIT 8 MODEL USED ON MAF-1 ASS'Y. NO. SCALE 1:1 CODE A		FINAL APPROVAL <i>[Signature]</i> DATE 4/24/64 MS-3625-0 SHEET REV. LTR.	

NOTES

THE CONTENTS OF THIS DRAWING ARE THE EXCLUSIVE PROPERTY OF THE TECHNICAL MATERIEL CORP. ITS UNAUTHORIZED USE OR REPRODUCTION IN WHOLE OR IN PART IS STRICTLY FORBIDDEN.