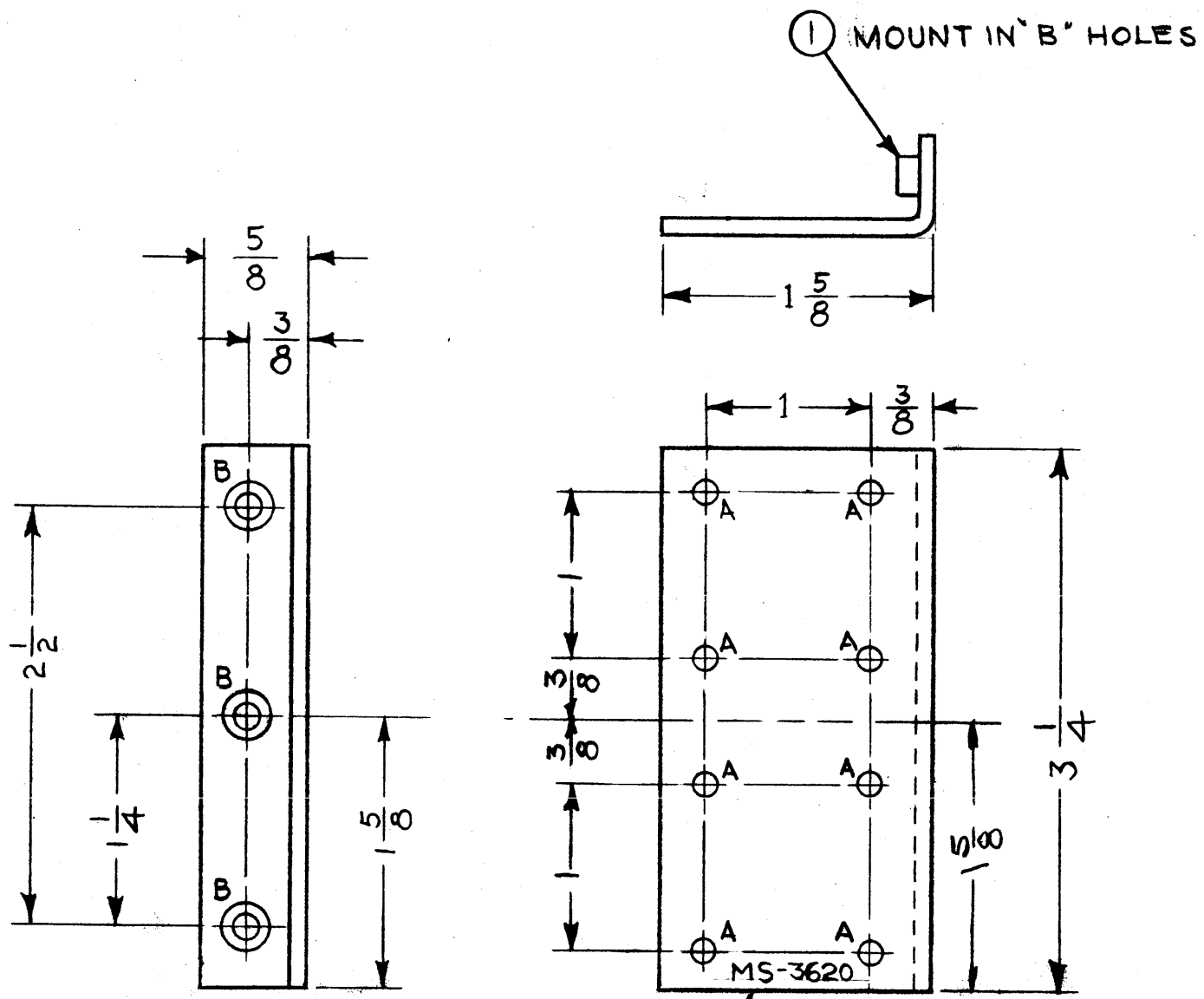


MS-3620

REVISIONS						
SYM	DESCRIPTION	DATE	E.M.N. NO.	DRAFT	CHKD	APPD
XI	B HOLE WAS .161-164	12/31		NP		<i>[Signature]</i>
O	ORIGINAL RELEASE FOR PRODUCTION	4/24/64	0	A.M.	<i>[Signature]</i>	



LEGEND

HOLE	DESCRIPTION	REQ'D
A	11/64 DIA.	8
B	.191-.194	3

METAL STAMP TMC
P/N 1/8 HIGH, GOTHIC

- UNLESS OTHERWISE SPECIFIED:
1. USE MATERIAL THICKNESS FOR MAXIMUM RADIUS ON ALL BENDS.
 2. ALL ANGULAR BENDS 90°.
 3. REMOVE ALL BURRS AND SHARP EDGES.
 4. MOUNT INSERTS AFTER FINISHING.

3	1	NT-129-632-4	NUT, ROUND, SWAGE TYPE	B
REQ'D.	ITEM	PART NUMBER	DESCRIPTION	SYMBOL
AALTONEN LIST OF MATERIAL				
MATERIAL .080 THICK 5052-H32 ALUMINUM			THE TECHNICAL MATERIEL CORP. MAMARONECK, NEW YORK	
FINISH S404 YEL IRIDITE 14-2 AL COAT			TITLE BRACKET, MOUNTING	
UNLESS OTHERWISE SPECIFIED DIMENSIONS ARE IN INCHES AND INCLUDE CHEMICALLY APPLIED OR PLATED FINISHES			DRAWN <i>[Signature]</i> DATE 11/12/63	FINAL APPROVAL <i>[Signature]</i> DATE 4/29/64
DECIMALS .X ± .05 .XX ± .01 .XXX ± .005			TOLERANCES	FRACTIONS ± 1/64 ANGLES ± 0° 30'
SCALE 1:1			ELECT. DES. <i>[Signature]</i> DATE 1/23/64	MECH. DES. <i>[Signature]</i> DATE 4-23-64
THE CONTENTS OF THIS DRAWING ARE THE EXCLUSIVE PROPERTY OF THE TECHNICAL MATERIEL CORP. ITS UNAUTHORIZED USE OR REPRODUCTION IN WHOLE OR IN PART IS STRICTLY FORBIDDEN.			MS-3620-0	
NOTES			SHEET	REV. LTR.