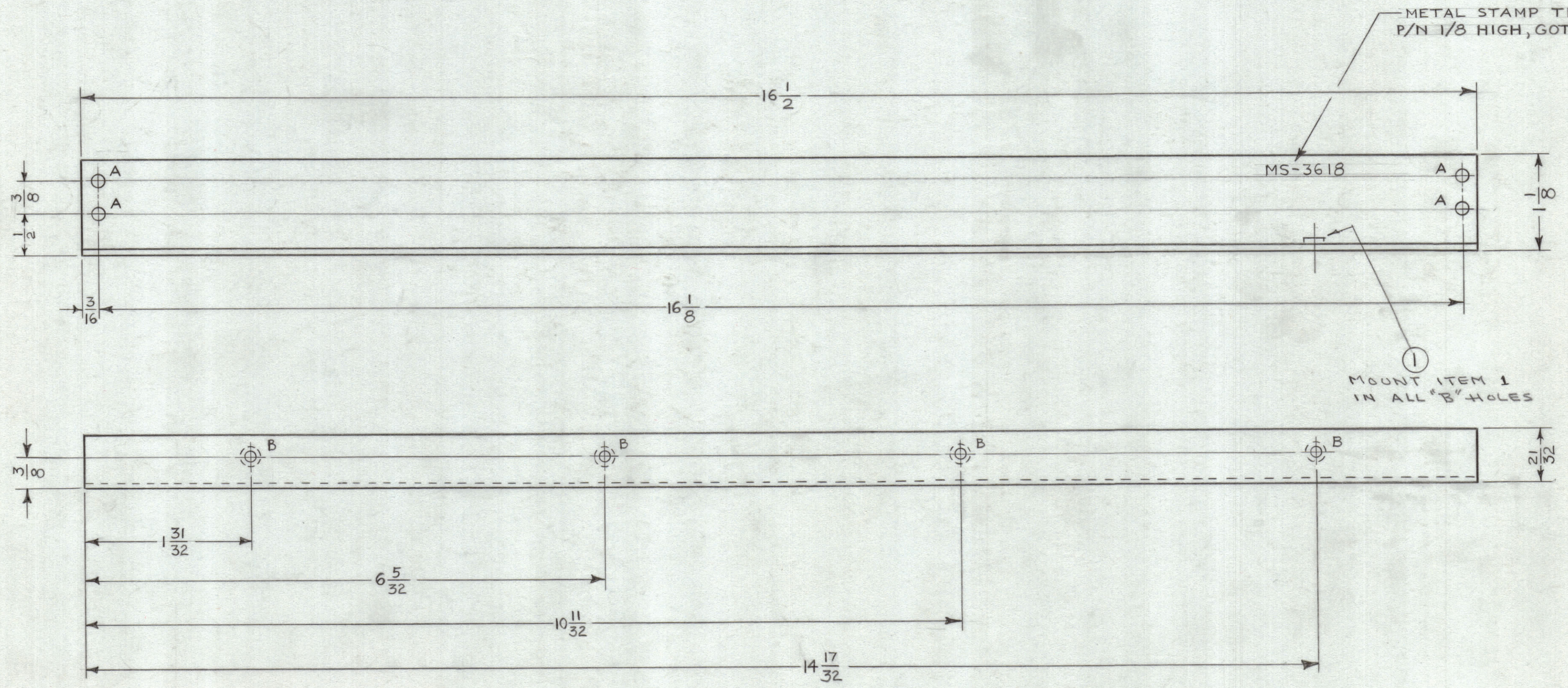


REVISIONS							
ZONE	SYM	DESCRIPTION	DATE	E.M.N. NO.	DRAFT	CHKD	APPD
#	0	ORIGINAL RELEASE FOR PRODUCTION	4/24/64	0	A.M.		

LEGEND		
HOLE	DESCRIPTION	REQD
A	11/64 DIA	4
B	.221-.224 DIA	4



UNLESS OTHERWISE SPECIFIED:

1. USE MATERIAL THICKNESS FOR MAXIMUM RADIUS ON ALL BENDS.
2. ALL ANGULAR BENDS 90°.
3. REMOVE ALL BURRS AND SHARP EDGES.
4. MOUNT INSERTS AFTER FINISHING.

NOTES

1	MAF-1	
Q'TY./UNIT	MODEL USED ON	ASS'Y. NO.
SCALE 1:1	CODE A	
THE CONTENTS OF THIS DRAWING ARE THE EXCLUSIVE PROPERTY OF THE TECHNICAL MATERIEL CORP. ITS UNAUTHORIZED USE OR REPRODUCTION IN WHOLE OR IN PART IS STRICTLY FORBIDDEN.		

4	1	NT-129-832-4	NUT, ROUND, SWAGE TYPE	B
REQ'D.	ITEM	PART NUMBER	DESCRIPTION	SYMBOL
AALTONEN LIST OF MATERIAL				
MATERIAL .080 THICK 5052-H32 ALUMINUM			THE TECHNICAL MATERIEL CORP. MAMARONECK, NEW YORK	
FINISH 5404 YEL IRIDITE 14-2 AL COAT			TITLE BRACKET, SUPPORT, FRONT	
UNLESS OTHERWISE SPECIFIED DIMENSIONS ARE IN INCHES AND INCLUDE CHEMICALLY APPLIED OR PLATED FINISHES			DRAWN <i>N. Peter</i>	DATE 11-14-63
DECIMALS X ± .05 XX ± .01 .XXX ± .005			CHECKED <i>@</i>	DATE 4-23-64
FRACTIONS ± 1/64 ANGLES ± 0° 30'			ELECT. DES. <i>TLC</i>	DATE 11-23-64
TOLERANCES			MECH. DES. <i>MS</i>	DATE 4-23-64
			SHEET	REV. LTR.

MS-3618 0