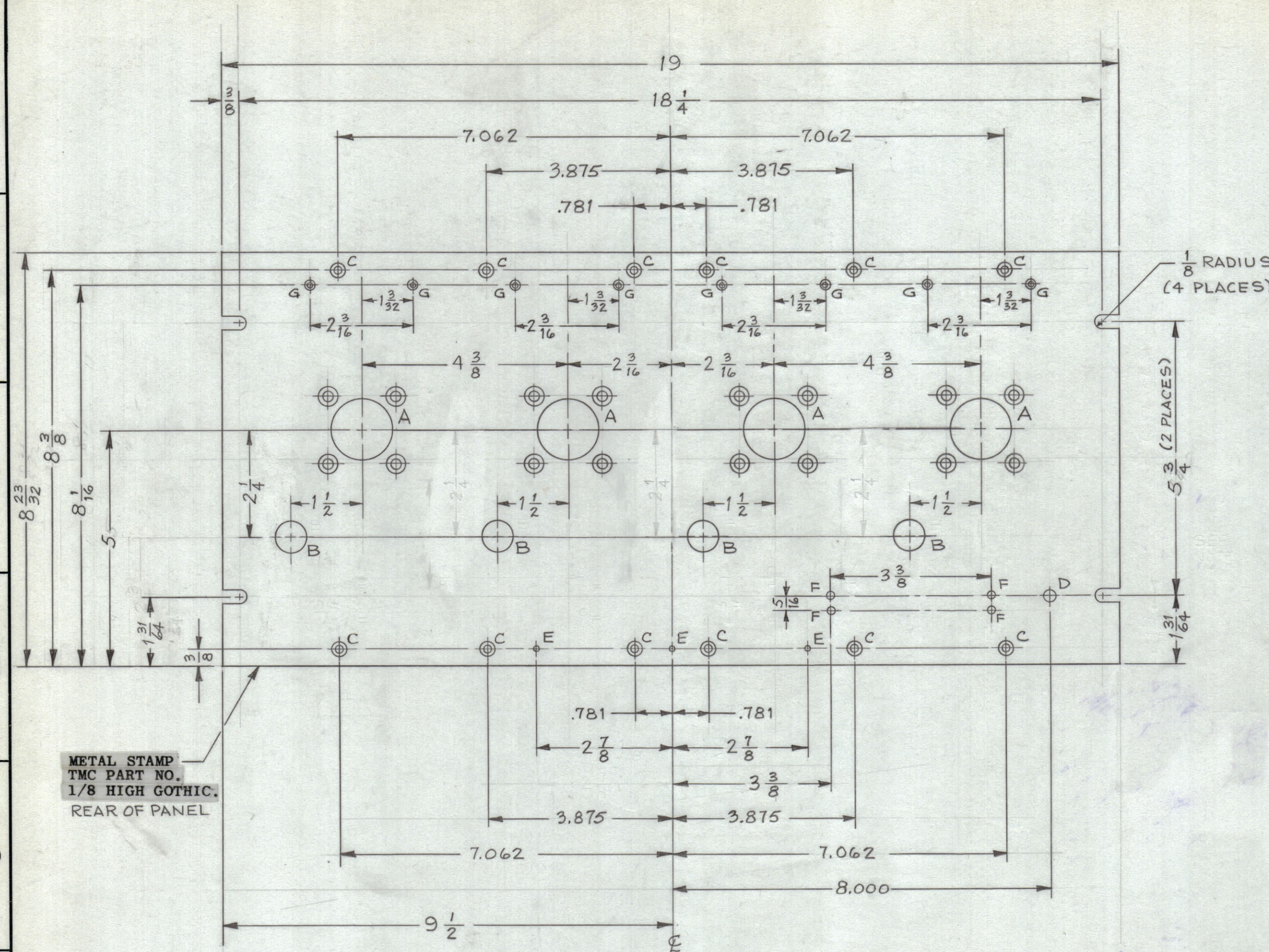


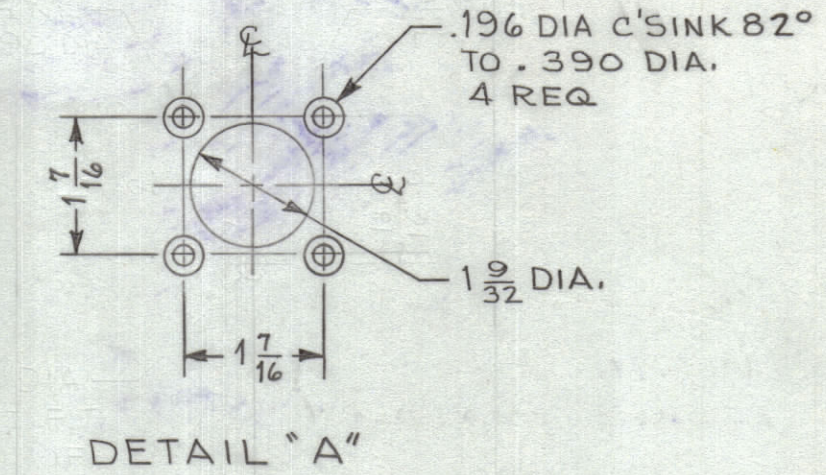
REVISIONS							
ZONE	SYM	DESCRIPTION	DATE	E.M.N. NO.	DRAFT	CHKD	APPD



LEGEND

HOLE	DESCRIPTION	REQ
A	SEE DETAIL	4
B	5/8 DIA.	4
C	.144 DIA. C'SINK 82° TO .284 DIA.	12
D	13/64 DIA.	1
E	.070 DIA.	3
F	.144 DIA.	4
G	DRILL & TAP FOR 3-48 AND C'SINK 82° TO .204 DIA.	8

METAL STAMP
TMC PART NO.
1/8 HIGH GOTHIC.
REAR OF PANEL



MACHINING:

- MILL ALL EDGES.
- HOLES MUST BE DRILLED, UNLESS OTHERWISE SPECIFIED.
- LATERAL BOW OF PANEL MUST BE KEPT TO .031 TOLERANCE.
- PANEL MUST BE FREE OF ALL MACHINING MARKS, GOUGES AND SCRATCHES. IF NECESSARY, SAND FRONT OF PANEL WITH NO. 120 GRIT SANDPAPER.

FINISH NOTES:

- S404 - IRIDITE 14-2 AL-COAT.
- S114 - ZINC CHROMATE PRIMER) FRONT AND
- S115 - SMOOTH GRAY ENAMEL) EDGES ONLY

NOTES

1	QDP-9E2X4B	
Q'TY./UNIT	MODEL USED ON	ASS'Y. NO.
SCALE	CODE	
1:2	A	

REQ'D.	ITEM	PART NUMBER	DESCRIPTION	SYMBOL
MARTINENGO LIST OF MATERIAL				
MATERIAL		ALUMINUM 3/16 2024-T3	THE TECHNICAL MATERIEL CORP. MAMARONECK, NEW YORK	
FINISH		SEE NOTES	TITLE PANEL, FRONT	
UNLESS OTHERWISE SPECIFIED DIMENSIONS ARE IN INCHES AND INCLUDE CHEMICALLY APPLIED OR PLATED FINISHES		DRAWN M. TANTILLO	DATE 11-6-63	FINAL APPROVAL <i>BP</i>
DECIMALS .X ± .05 .XX ± .01 .XXX ± .005		TOLERANCES	DATE 11-22-63	DATE 11-25-63
FRACTIONS ± 1/64 ANGLES ± 0° 30'		ELECT. DES. <i>dm</i>	DATE 11-25-63	DATE 11-25-63
THE CONTENTS OF THIS DRAWING ARE THE EXCLUSIVE PROPERTY OF THE TECHNICAL MATERIEL CORP. ITS UNAUTHORIZED USE OR REPRODUCTION IN WHOLE OR IN PART IS STRICTLY FORBIDDEN.		MECH. DES. <i>dm</i>	DATE 11-25-63	DATE 11-25-63

MS-3614