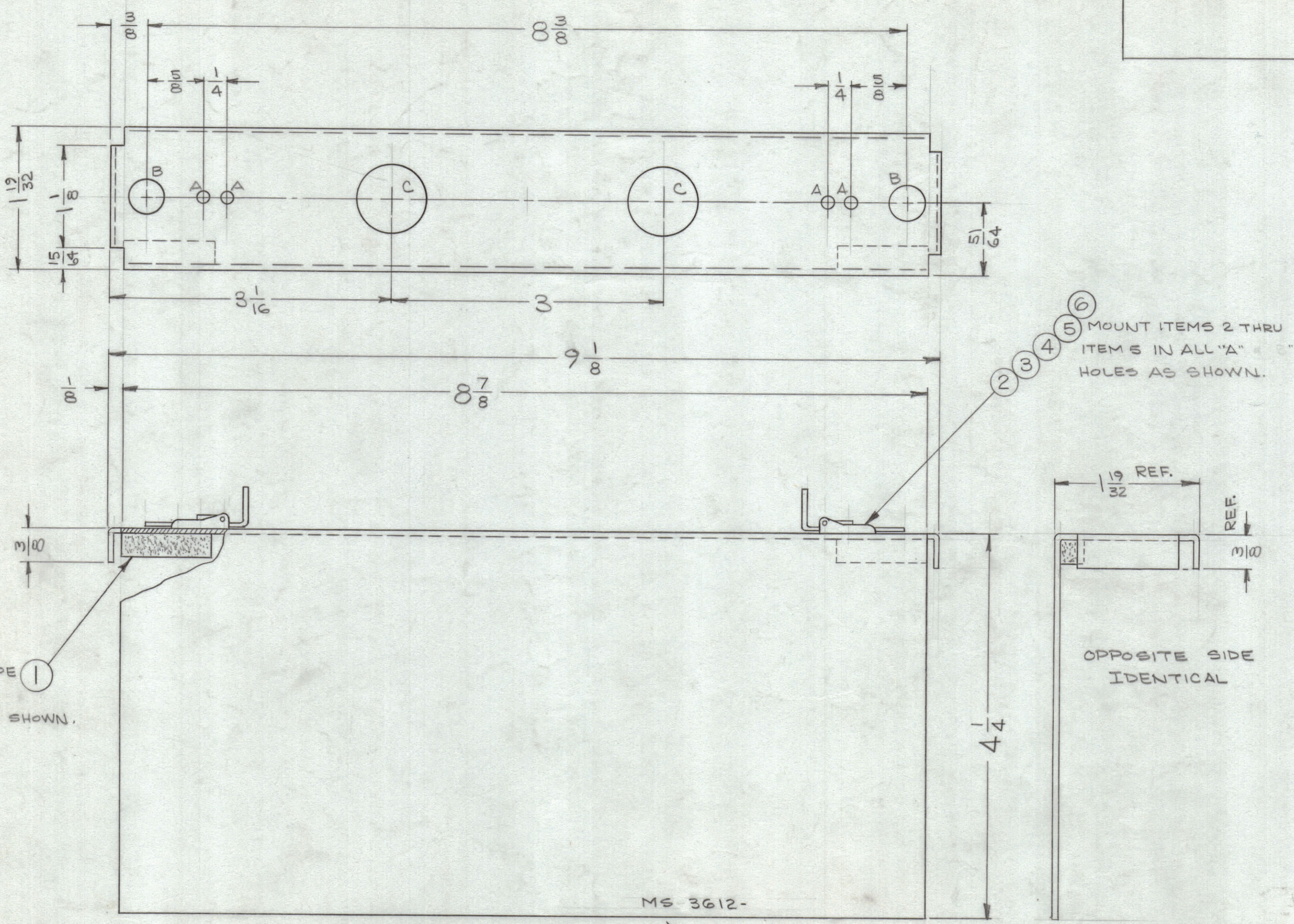


REVISIONS						
ZONE	SYM	DESCRIPTION	DATE	E.M.N. NO.	DRAFT	CHKD
B2	X1	ITEM (6) ADDED	2/24/64	1	SS	HK
	X2	DWG TITLE WAS COVER-FRAME, MTG; ADDED AX-475	4/9/64	2	JL	JK
-	O	ORIGINAL RELEASE FOR PRODUCTION	7.30.64	-	JTB	



LEGEND		
HOLE	DESCRIPTION	REQ
A	.128 DIA.	4
B	3/8 DIA.	2
C	3/4 DIA.	2

⑥
⑤ MOUNT ITEMS 2 THRU
④ ITEM 5 IN ALL "A"
③ HOLES AS SHOWN.

PLACE TAPE
ON BOTH
ENDS AS SHOWN.

OPPOSITE SIDE
IDENTICAL

METAL STAMP TMC PART NO.
1/8 HIGH GOTHIC, WITH
LATEST REV. LETTER.

UNLESS OTHERWISE SPECIFIED:

1. USE MATERIAL THICKNESS FOR MAXIMUM RADIUS ON ALL BENDS.
2. ALL ANGULAR BENDS 90°.
3. REMOVE ALL BURRS AND SHARP EDGES.
4. MOUNT INSERTS AFTER FINISHING.

NOTES

1	LFS-1	AX-475
QTY./UNIT	MODEL USED ON	ASS'Y. NO.
SCALE 1:1	CODE A	

THE CONTENTS OF THIS DRAWING ARE THE EXCLUSIVE PROPERTY OF THE TECHNICAL MATERIEL CORP. ITS UNAUTHORIZED USE OR REPRODUCTION IN WHOLE OR IN PART IS STRICTLY FORBIDDEN.

REQ'D.	ITEM	PART NUMBER	DESCRIPTION	SYMBOL
2	G	FW06HBN	WASHER, FLAT	A
2	5	FS 119-3	LATCHGUIDE, SNAPSLIDE FASTENER	A
2	4	FS 118-2	LATCH, SNAPSLIDE FASTENER	A
2	3	WA 131-23	WASHER, SPRING	A
2	2	FS 120-2	POST, SNAPSLIDE FASTENER	A
2	1	TA 111-2-2-1-G	TAPE, URETHANE	-/-

M GELLMAN LIST OF MATERIAL			
MATERIAL .032, ALUMINUM 5052-H32		THE TECHNICAL MATERIEL CORP. MAMARONECK, NEW YORK	
FINISH 3404-YEL. IRIDITE		TITLE COVER, TOP-MOUNTING FRAME	
DRAWN CHECKED	DATE DATE	FINAL APPROVAL DATE	DATE
UNLESS OTHERWISE SPECIFIED DIMENSIONS ARE IN INCHES AND INCLUDE CHEMICALLY APPLIED OR PLATED FINISHES		ELECT. DES. DATE	
MECH. DES. DATE		REV. LTP	

MS 3612 0

MS 3612 0