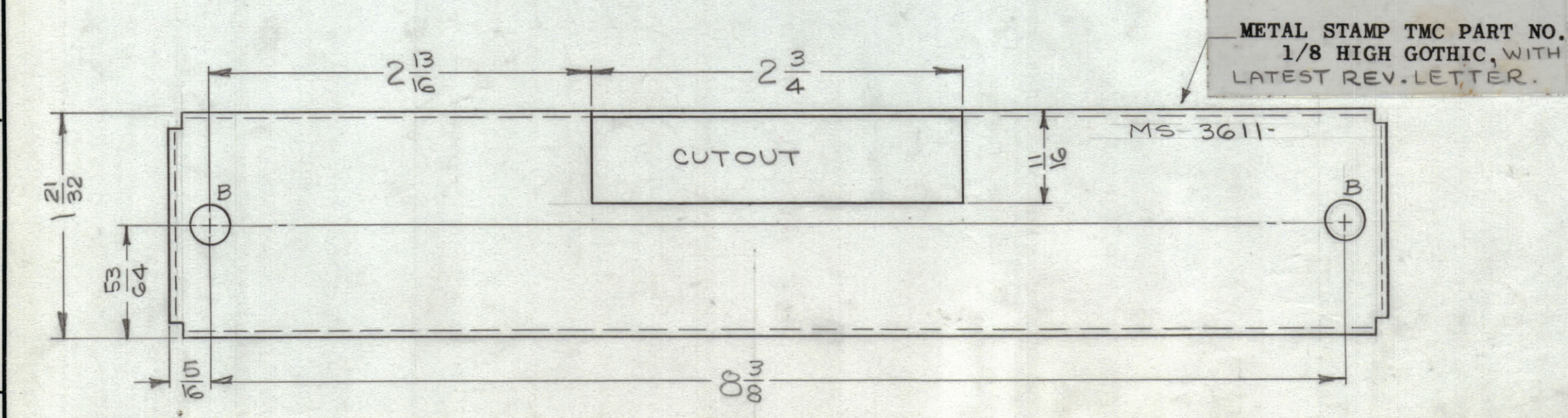
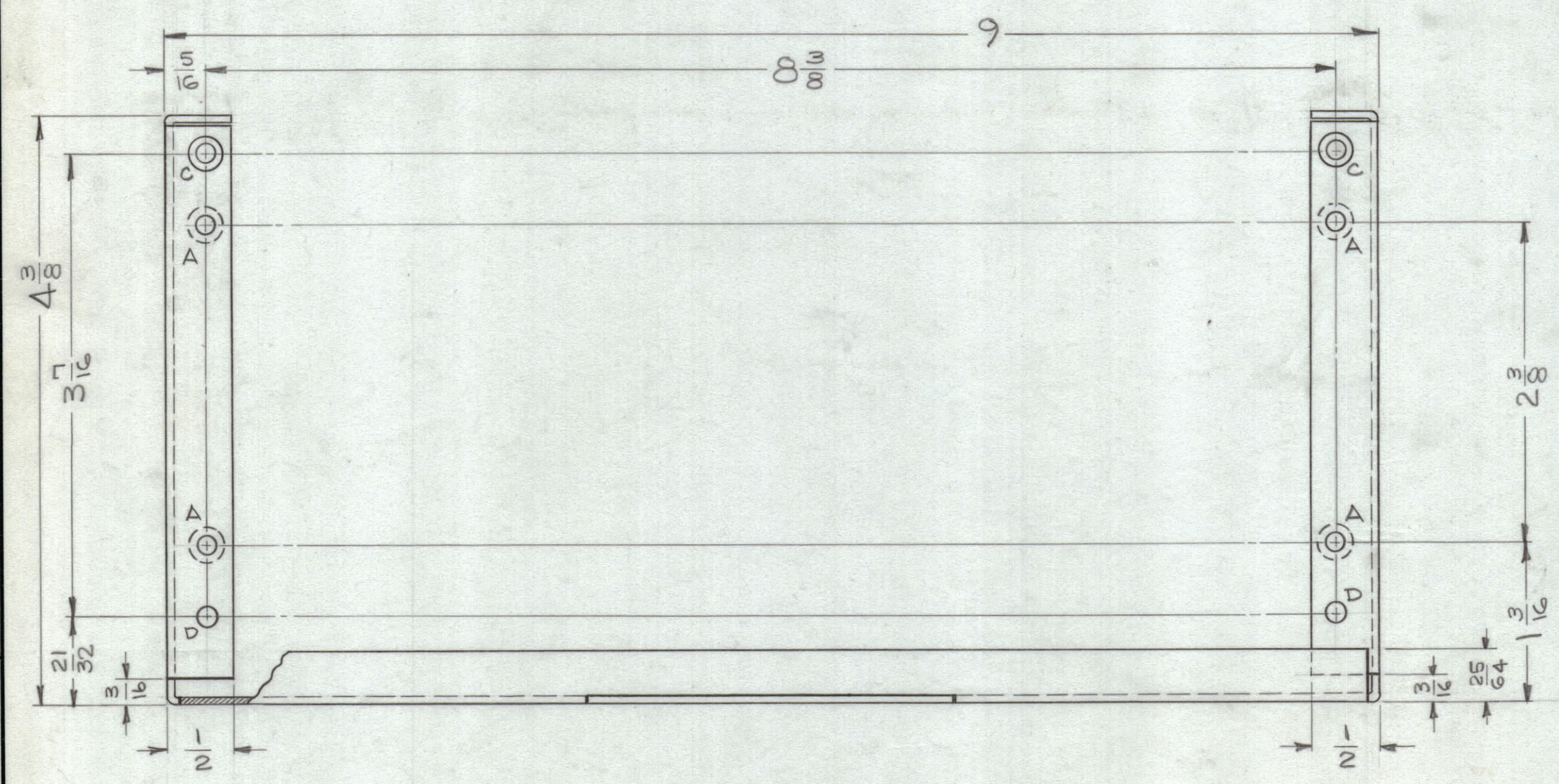
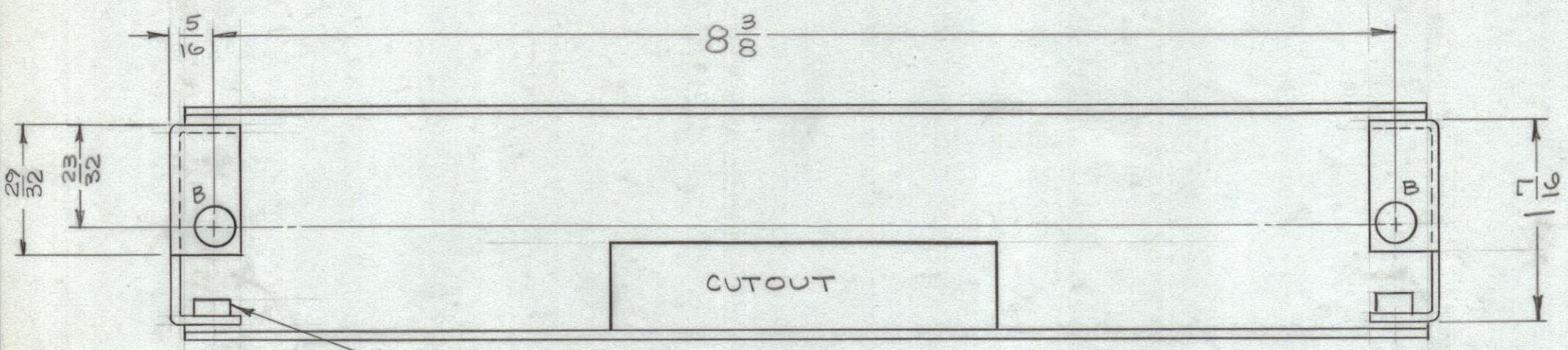


| REVISIONS | | | | | | |
|-----------|-----|---------------------------------|---------|------------|-------|-------|
| ZONE | SYM | DESCRIPTION | DATE | E.M.N. NO. | DRAFT | CHKD. |
| X1 | | ADDED AX-475 TO ASSY NO. BLOCK. | 4/9/64 | 1 | JL | JK |
| - | 0 | ORIGINAL RELEASE FOR PRODUCTION | 7.30.64 | - | ATB | |



| LEGEND | | |
|--------|------------------------------|-----|
| HOLE | DESCRIPTION | REQ |
| A | .161-.164 DIA | 4 |
| B | 9/32 DIA | 4 |
| C | .120 DIA, C'SINK 82° TO .230 | 2 |
| D | 9/64 DIA | 2 |

- UNLESS OTHERWISE SPECIFIED:
1. USE MATERIAL THICKNESS FOR MAXIMUM RADIUS ON ALL BENDS.
 2. ALL ANGULAR BENDS 90°.
 3. REMOVE ALL BURRS AND SHARP EDGES.
 4. MOUNT INSERTS AFTER FINISHING.

| REQ'D. | ITEM | PART NUMBER | DESCRIPTION | SYMBOL |
|--------|------|--------------|--------------------------|--------|
| 4 | 3 | WA 137-2 | RING, RETAINING | B |
| 2 | 2 | FS 122-1 | STUD, TURNLOCK, FASTENER | B |
| 4 | 1 | NT 129-440-4 | NUT, ROUND, SWAGE TYPE | A |

| LIST OF MATERIAL | | | |
|---|--|---------------------------------|---------|
| MATERIAL | | THE TECHNICAL MATERIEL CORP. | |
| .062, ALUMINUM 5052-H32 | | MAMARONECK, NEW YORK | |
| FINISH | | TITLE | |
| S404-YELLOW IRIDITE | | FRAME, MOUNTING-PRINTED CIRCUIT | |
| UNLESS OTHERWISE SPECIFIED DIMENSIONS ARE IN INCHES AND INCLUDE CHEMICALLY APPLIED OR PLATED FINISHES | | DRAWN | DATE |
| | | 8.14.63 | 8.14.63 |
| | | CHECKED | DATE |
| | | | |
| | | ELECT. DES. | DATE |
| | | | |
| | | MECH. DES. | DATE |
| | | | |
| DECIMALS | | FRACTIONS | |
| X ± .05 | | ± 1/64 | |
| .XX ± .01 | | ANGLES | |
| .XXX ± .005 | | ± 0° 30' | |
| TOLERANCES | | SHEET | |
| | | MS 3611 | |
| | | REV. LTR. | |

| 1 | LFS-1 | AX-475 |
|---|---------------|-----------|
| QTY./UNIT | MODEL USED ON | ASSY. NO. |
| SCALE | CODE | |
| 1:1 | | |
| THE CONTENTS OF THIS DRAWING ARE THE EXCLUSIVE PROPERTY OF THE TECHNICAL MATERIEL CORP. ITS UNAUTHORIZED USE OR REPRODUCTION IN WHOLE OR IN PART IS STRICTLY FORBIDDEN. | | |

NOTES

MS-3611