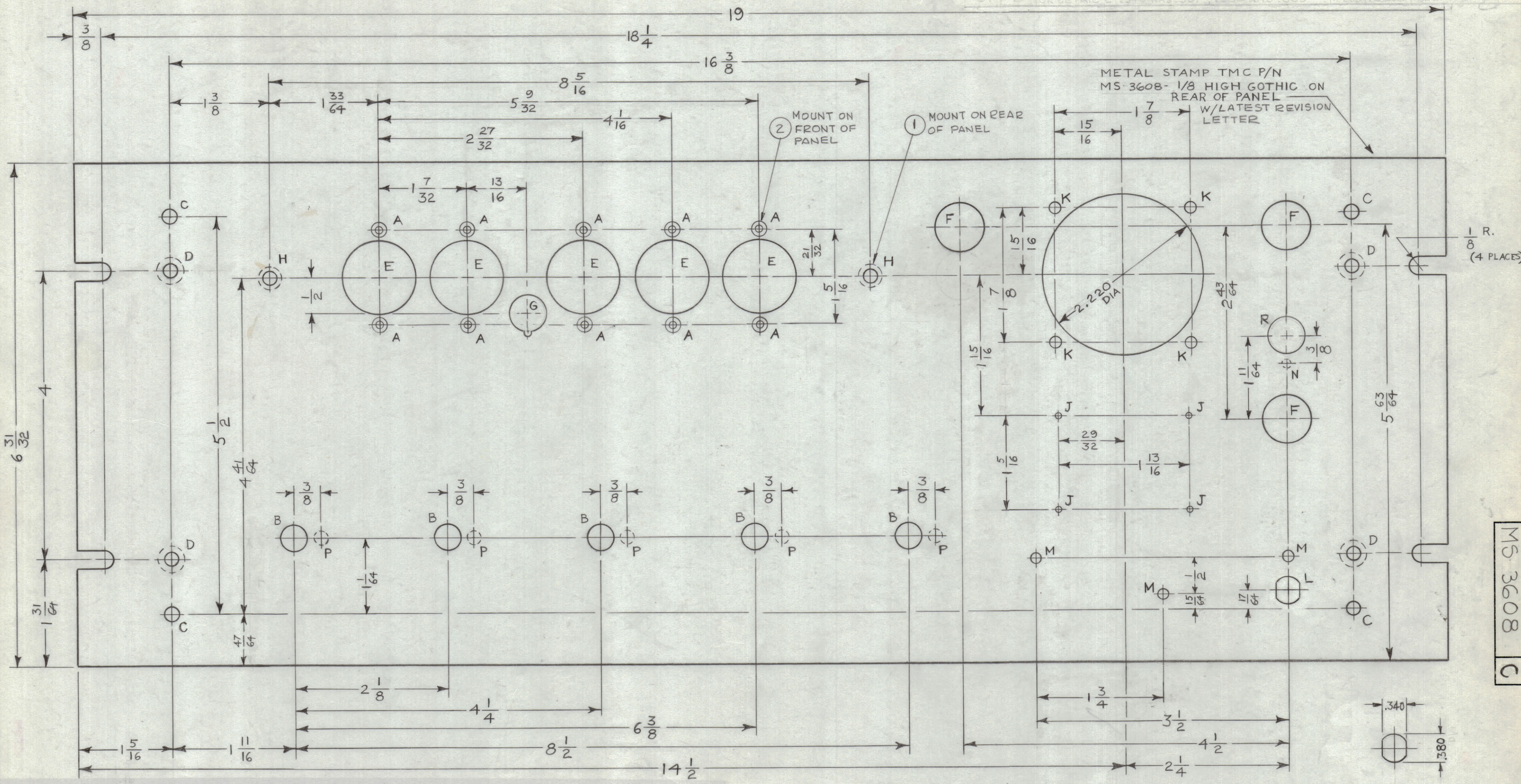


REVISIONS					
ZONE	SYM	DESCRIPTION	DATE	E.M.N. NO.	APPD
F2	C	2.220 DIA HOLE WAS 2.225 DIA. (METER HOLE)	2-10-65	13420	<i>[Signature]</i>
A		2.225 DIA HOLE REVISION TO DETAIL L			
G1	B	ON DETAIL L .340 WAS .337 .330 WAS .330	11-25-64	13214	



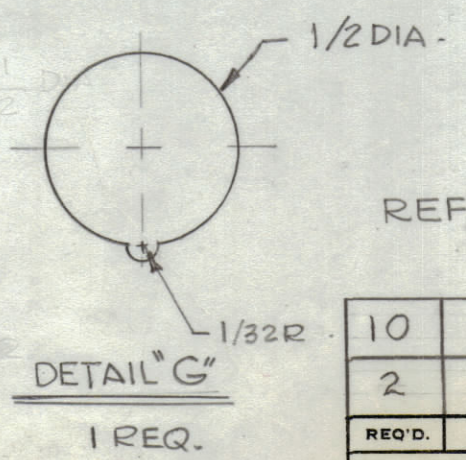
HOLE	DESCRIPTION	REQ
A	.161-.164 DIA.	10
B	.13/32 DIA.	5
C	.196 DIA.	4
D	DRILL .196 DIA & C-SINK 82° X .390 DIA. ON REAR OF PANEL	4
E	1 DIA.	5
F	11/16 DIA.	3
G	SEE DETAIL	1
H	.191-.194 DIA.	2
J	.076 DIA.	4
K	1/8 DIA.	4
L	SEE DETAIL	1
M	.161 DIA.	3
N	DRILL 9/64 DIA X 3/32 DEEP ON REAR OF PANEL	1
P	DRILL 3/16 DIA X 3/32 DEEP ON REAR OF PANEL	5
R	1/2 DIA	1

MACHINING:

- MILL ALL EDGES.
- HOLES MUST BE DRILLED, UNLESS OTHERWISE SPECIFIED.
- LATERAL BOW OF PANEL MUST BE KEPT TO .031 TOLERANCE.
- PANEL MUST BE FREE OF ALL MACHINING MARKS, GOUGES AND SCRATCHES. IF NECESSARY, SAND FRONT OF PANEL WITH NO. 120 GRIT SANDPAPER.

FINISH NOTES:

- S404 - IRIDITE 14-2 AL-COAT.
- S114 - ZINC CHROMATE PRIMER FRONT AND EDGES ONLY
- S115 - SMOOTH GRAY ENAMEL



REF: LD-1421

REQ'D.	ITEM	PART NUMBER	DESCRIPTION	SYMBOL
10	2	NT-129-440-6	NUT, ROUND, SWAGE TYPE	A
2	1	NT-129-632-6	NUT, ROUND, SWAGE TYPE	H

M. GELLMAN LIST OF MATERIAL			
MATERIAL 3/16 ALUMINUM 2024-T3		THE TECHNICAL MATERIEL CORP. MAMARONECK, NEW YORK	
FINISH SEE NOTES		TITLE PANEL, FRONT	
UNLESS OTHERWISE SPECIFIED DIMENSIONS ARE IN INCHES AND INCLUDE CHEMICALLY APPLIED OR PLATED FINISHES		DRAWN <i>n. Peter</i> DATE 8-19-63 CHECKED <i>@</i> DATE 7-25-64 ELEC. DES. DATE 7-25-64 MECH. DES. <i>M. Gellman</i> DATE 7-25-64	FINAL APPROVAL <i>RJC</i> DATE MS 3608 C SHEET REV. LTR.

Q'TY/UNIT	MODEL USED ON	ASS'Y. NO.
1	LFS(1)	A3539
SCALE 1:1	CODE A	