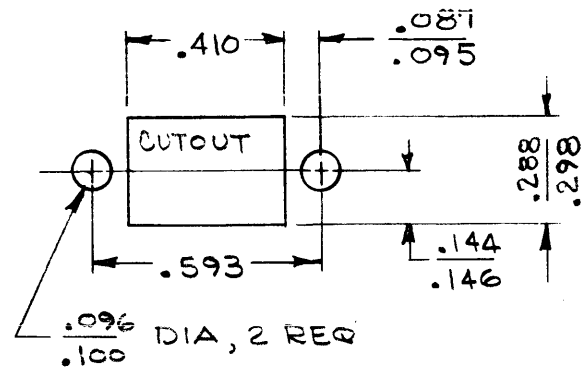


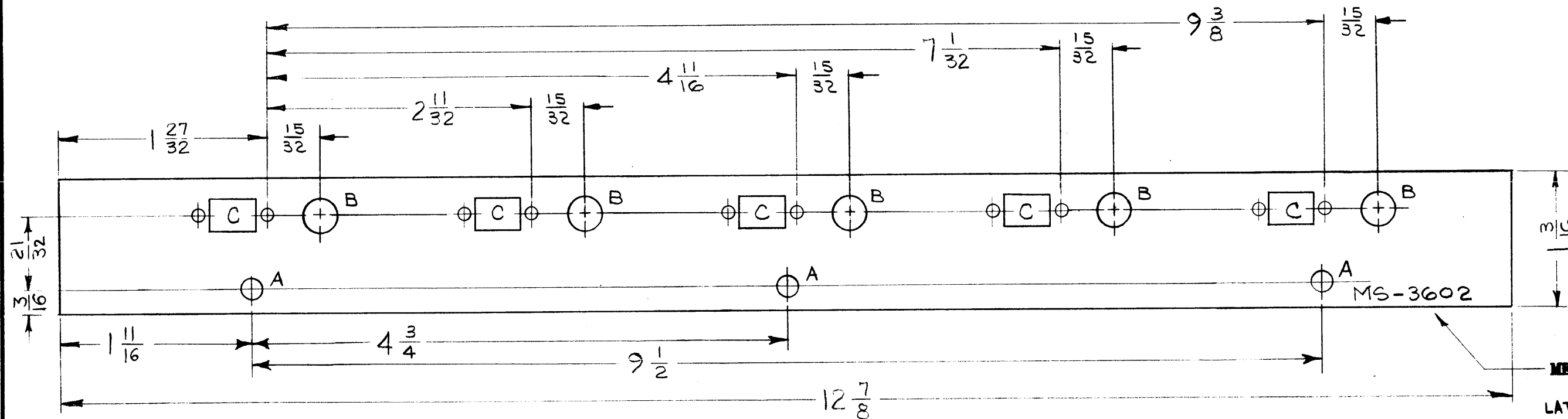
LEGEND		
HOLE	DESCRIPTION	REQ.
A	.166 DIA	3
B	5/16 DIA.	5
C	SEE DETAIL	5



"C" DETAIL (5 REQ)
SCALE: 2:1

MS-3602

REVISIONS						
SYM	DESCRIPTION	DATE	E.M.N. NO.	DRAFT	CHKD	APPD
X1	15/32" B' HOLE LOCATING DIM. WAS 11/32.	12/2/63	-	JL		<i>[Signature]</i>
0	ORIGINAL RELEASE FOR PRODUCTION	7-29-64	-	SRG		



METAL STAMP TMC PART NO.
1/8 HIGH GOTHIC, WITH
LATEST REVISION LETTER

REF: LD-1420

UNLESS OTHERWISE SPECIFIED:
REMOVE ALL BURRS AND SHARP EDGES.

1	LFS-1	
Q'TY./UNIT	MODEL USED ON	ASS'Y. NO.
SCALE 1:1	CODE A	

THE CONTENTS OF THIS DRAWING ARE THE EXCLUSIVE PROPERTY OF THE TECHNICAL MATERIEL CORP. ITS UNAUTHORIZED USE OR REPRODUCTION IN WHOLE OR IN PART IS STRICTLY FORBIDDEN.

REQ'D.	ITEM	PART NUMBER	DESCRIPTION	SYMBOL
M. GELLMAN LIST OF MATERIAL				
MATERIAL .062, ALUMINUM 5052-H32			THE TECHNICAL MATERIEL CORP. MAMARONECK, NEW YORK	
FINISH S404 - YELLOW IRIDIUM			TITLE BRACKET, MOUNTING, CONNECTORS (MAIN CHASSIS)	
UNLESS OTHERWISE SPECIFIED DIMENSIONS ARE IN INCHES AND INCLUDE CHEMICALLY APPLIED OR PLATED FINISHES			DRAWN <i>[Signature]</i> 8-13-63	FINAL APPROVAL <i>[Signature]</i> DATE
DECIMALS .X ± .05 .XX ± .01 .XXX ± .005			CHECKED <i>[Signature]</i> 7-28-64	DATE
FRACTIONS ± 1/64 ANGLES ± 0° 30'			ELECT. DES. <i>[Signature]</i>	DATE
TOLERANCES			MECH. DES. <i>[Signature]</i> 7-28-64	DATE
MS-3602				0
SHEET				REV. LTR.

NOTES