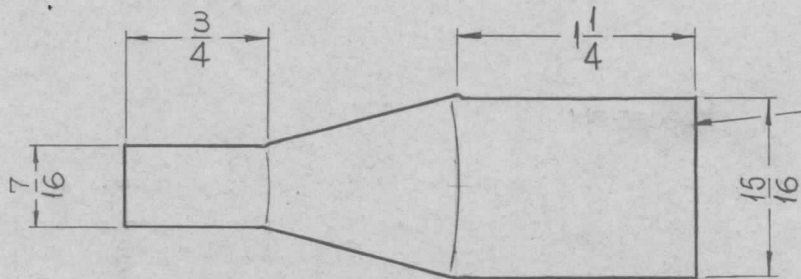
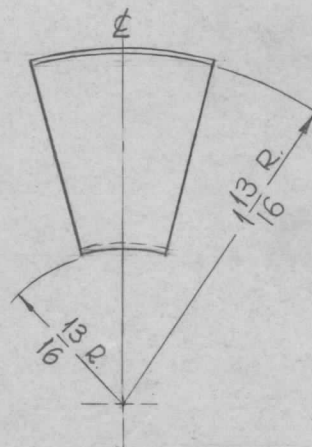
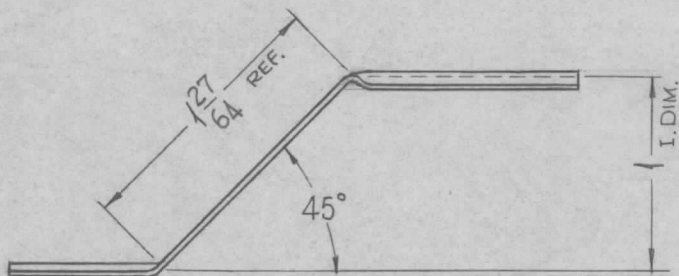


REQ. PER UNIT	USED ON			MS-3500 $\emptyset$
	MODEL	ASS'Y. NO.	DATE	
10	GPT-200K	AX-393	9-19-63	

2



METAL STAMP TMC PART NO.  
1/8 HIGH GOTHIC.  
ON REAR  
WITH LATEST REVISION LETTER



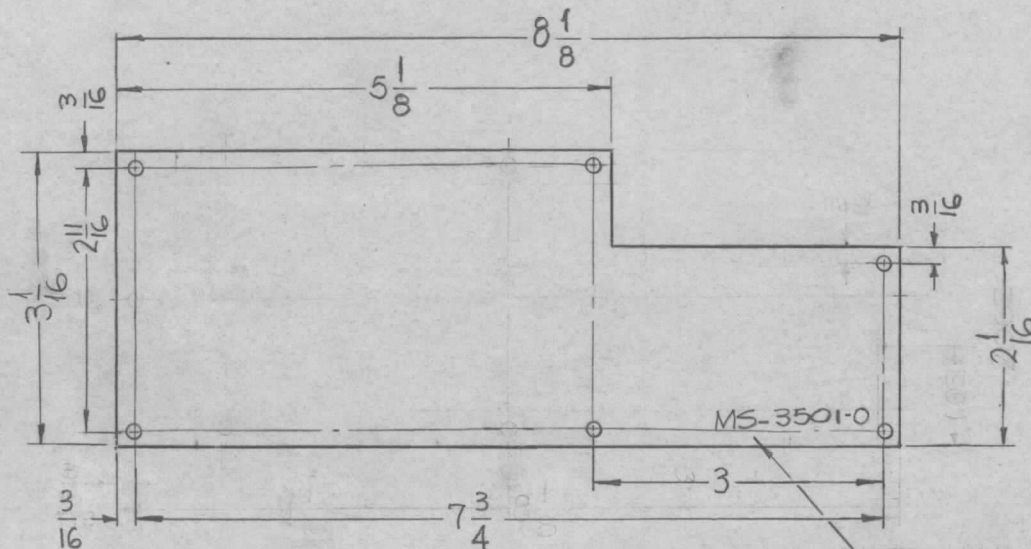
SYM	DESCRIPTION	DATE	CH. NO.	DRAFTS	CHECKER	ENG. APP.	REQ. ITEM	PART NO.	F. BUDETTI DESCRIPTION	SYMBOL	
							.040 THICK		THE TECHNICAL MATERIEL CORP. MAMARONECK, NEW YORK		
							STOCK SIZE				
0	ORIGINAL RELEASE FOR PRODUCTION	5/21/64	0	A.M.			COPPER		STRAP, GROUNDING		
	UNLESS OTHERWISE SPECIFIED DIMENSIONS ARE IN INCHES AND INCLUDE CHEMICALLY APPLIED OR PLATED FINISHES	SCALE	1" = 1"					#	#	SRG	MC RJC
							TYPE & TEMPER	HEAT TREAT. SPEC.	DRAWN	CHECKED	FINAL APPROVAL
							S245 SILVER PLATE		DB	aa	MS-3500 $\emptyset$
							FINISH & SPEC. NO.		ELEC. DES. APP.	MECH. DES. APP.	

DECIMALS  
.X  $\pm$  .05  
.XX  $\pm$  .01  
.XXX  $\pm$  .005

FRACTIONS  
 $\pm$  1/64  
ANGLES  
 $\pm$  0° 30'

TOLERANCES

REQ. PER UNIT	USED ON			MS-3501	O
	MODEL	ASS'Y. NO.	DATE		
2	GPT-200K(Ax-395)	A-3242	9-17-63		



HOLES:  
1/8 DIA. (6REQ.)

METAL STAMP TMC PART NO.  
1/8 HIGH GOTHIC.

SYM	DESCRIPTION	DATE	CH. NO.	DRAFTS	CHECKER	ENG. APP.	REQ. ITEM	PART NO.	F. BUDETTI	DESCRIPTION	SYMBOL
							.031 THICK			THE TECHNICAL MATERIEL CORP. MAMARONECK, NEW YORK	
							STOCK SIZE				
O	ORIGINAL RELEASE FOR PRODUCTION	3-164					ALUMINUM			PLATE, SIDES CAP. GEAR BOX (OUTPUT LD.)	
							5052-H32		SRG	aaab	RAC 3-30-64
							TYPE & TEMPER	HEAT TREAT. SPEC.	DRAWN	CHECKED	FINAL APPROVAL
							5404 YELLOW IRIDITE		DB HB	RG	MS-3501 O
							FINISH & SPEC. NO.		ELEC. DES. APP.	MECH. DES. APP.	

UNLESS OTHERWISE SPECIFIED  
DIMENSIONS ARE IN INCHES AND INCLUDE  
CHEMICALLY APPLIED OR PLATED FINISHES

DECIMALS  
.X ± .05  
.XX ± .01  
.XXX ± .005

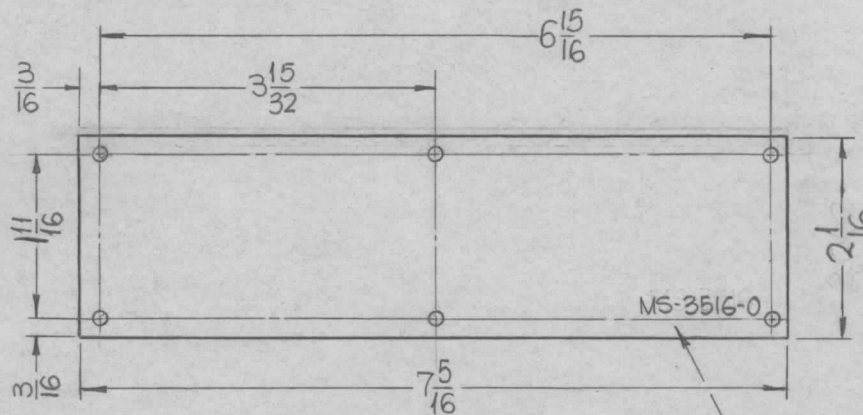
FRACTIONS  
± 1/64  
ANGLES  
± 0° 30'

TOLERANCES

SCALE  
1/2

CODE  
A

REQ. PER UNIT	USED ON			MS-3516 0
	MODEL	ASS'Y. NO.	DATE	
2	GPT-200K (AX-395)	A-3236	9-30-63	



HOLES:  
1/8 DIA. (6 REQ.)

METAL STAMP TMC PART NO.  
1/8 HIGH GOTHIC.

SYM	DESCRIPTION	DATE	CH. NO.	DRAFTS	CHECKER	ENG. APP.	REQ. ITEM	PART NO.	F. BUDETTI	DESCRIPTION	SYMBOL	
							.031 THICK			THE TECHNICAL MATERIEL CORP. MAMARONECK, NEW YORK		
							STOCK SIZE					
0	ORIGINAL RELEASE FOR PRODUCTION	3-1-64					ALUMINUM				PLATE, SIDES CAP GEAR BOX (TUNE)	
	UNLESS OTHERWISE SPECIFIED DIMENSIONS ARE IN INCHES AND INCLUDE CHEMICALLY APPLIED OR PLATED FINISHES	SCALE	1 1/2" = 1"				5052-H32		SRG	aa	RAC	3/30/64
							TYPE & TEMPER	HEAT TREAT. SPEC.	DRAWN	CHECKED	FINAL APPROVAL	
							S404 YELLOW IRIDITE		RB RB	BE	MS-3516 0	
							FINISH & SPEC. NO.		ELEC. DES. APP.	MECH. DES. APP.		

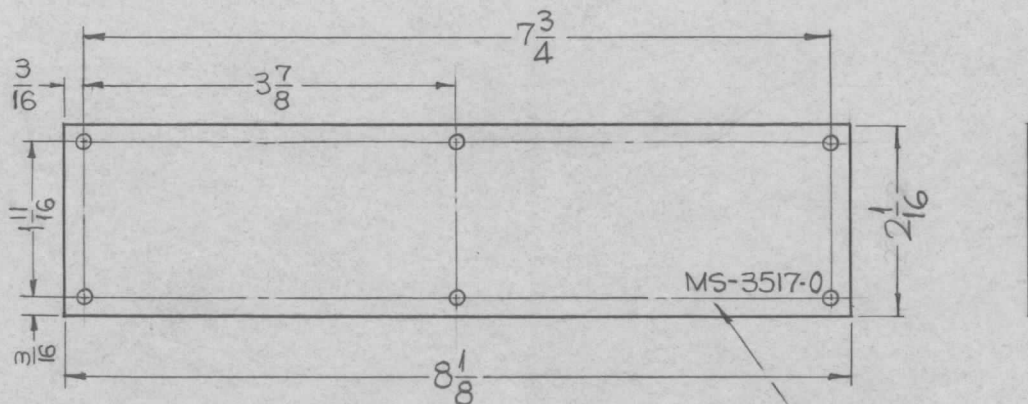
DECIMALS  
.X ± .05  
.XX ± .01  
.XXX ± .005

TOLERANCES

FRACTIONS  
± 1/64  
ANGLES  
± 0° 30'

CODE  
A

REQ. PER UNIT	USED ON			MS-3517 0
	MODEL	ASS'Y. NO.	DATE	
2	GPT-200K (AX-395)	A-3239	9-30-63	



HOLES:  
1/8 DIA. (6 REQ.)

METAL STAMP TMC PART NO.  
1/8 HIGH GOTHIC.

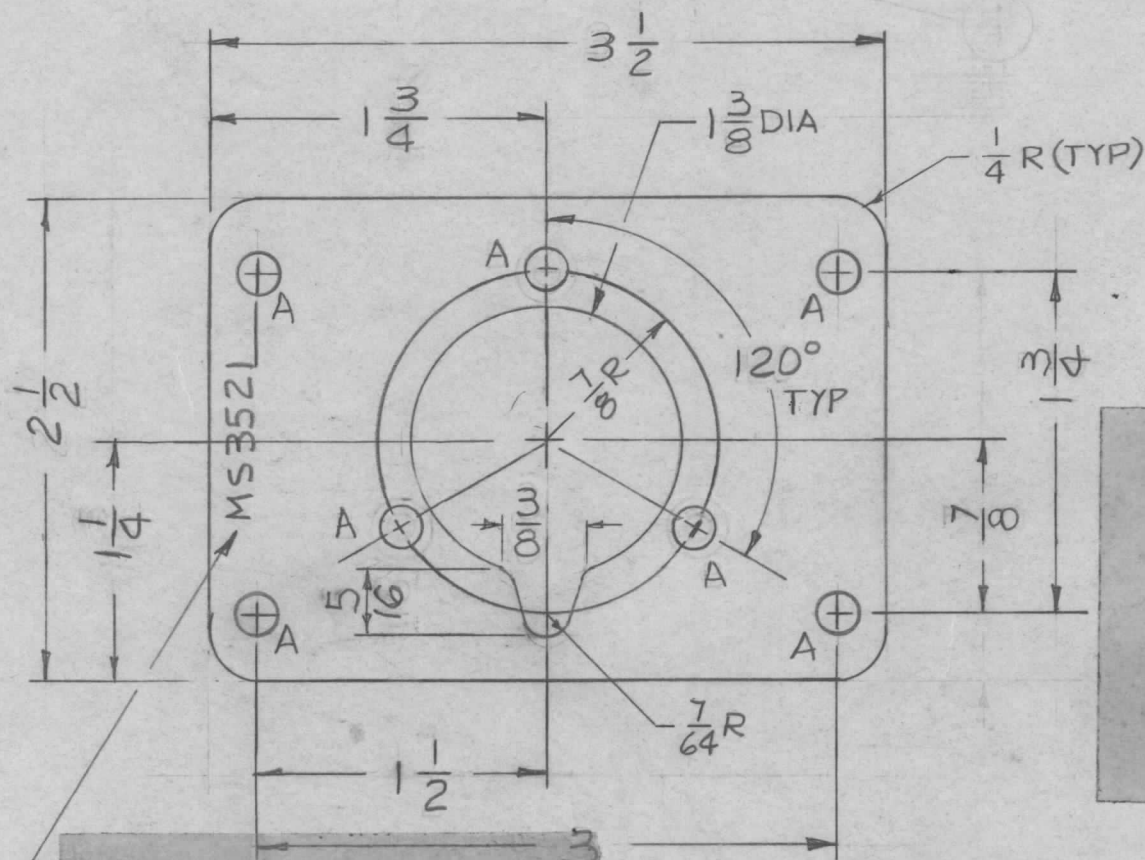
SYM	DESCRIPTION	DATE	CH. NO.	DRAFTS	CHECKER	ENG. APP.	REQ. ITEM	PART NO.	F. BUDETTI	DESCRIPTION	SYMBOL	
							.031 THICK			THE TECHNICAL MATERIEL CORP. MAMARONECK, NEW YORK		
							STOCK SIZE					
○	ORIGINAL RELEASE FOR PRODUCTION	3-3-64					ALUMINUM			PLATE SIDES CAP. GEAR BOX (LOAD)		
	UNLESS OTHERWISE SPECIFIED DIMENSIONS ARE IN INCHES AND INCLUDE CHEMICALLY APPLIED OR PLATED FINISHES	SCALE	1/2" = 1"				5052-H32		SRG	aaqcb	KAC 3-30-64	
							TYPE & TEMPER	HEAT TREAT. SPEC.	DRAWN	CHECKED	FINAL APPROVAL	
	DECIMALS .X ± .05 .XX ± .01 .XXX ± .005	TOLERANCES	FRACTIONS ± 1/64 ANGLES ± 0° 30'	CODE	A		S404 YELLOW IRIDITE		203 LB	130	MS-3517	0
							FINISH & SPEC. NO.		ELEC. DES. APP.	MECH. DES. APP.		







REQ. PER UNIT	USED ON			MS-3521 B
	MODEL	ASS'Y. NO.	DATE	
2	GPT-200K	AX-395	10-2-63	



HOLES  
A-13/64  
E-221-224

REQ'D.  
7

UNLESS OTHERWISE SPECIFIED:

1. USE MATERIAL THICKNESS FOR MAXIMUM RADIUS ON ALL BENDS.
2. ALL ANGULAR BENDS 90°.
3. REMOVE ALL BURRS AND SHARP EDGES.
4. MOUNT INSERTS AFTER FINISHING.

METAL STAMP TMC PART NO.  
1/8 HIGH GOTHIC, WITH  
LATEST REVISION LETTER

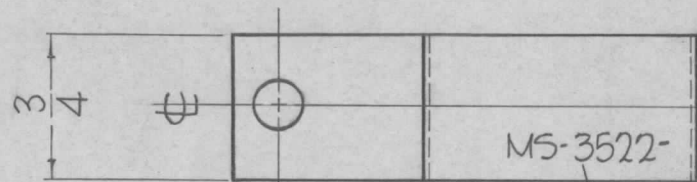
LD-1365  
REF TMC DWG LD-1364

3 1 DELETED							AUT. ROUND, SWAGE TYPE		
REQ. ITEM	PART NO.		F. BUDETTI			DESCRIPTION		SYMBOL	
B	IT.1 (NT129-832-4) DELE; "A" HOLES WERE "B" (3PL)		4.15.65	13822	J.L.	JCB	.081 THICK	THE TECHNICAL MATERIEL CORP. MAMARONECK, NEW YORK	
A	DIM 1/4 WAS 1 3/4		7.28.64	11949	J.L.	SRG	STOCK SIZE		
O	ORIGINAL RELEASE		5.18.64		J.L.B.		ALUMINUM		
SYM	DESCRIPTION		DATE	CH. NO.	DRAFTS	CHECKER	ENG. APP.	PLATE, METERING CIRCUIT MTG	
UNLESS OTHERWISE SPECIFIED DIMENSIONS ARE IN INCHES AND INCLUDE CHEMICALLY APPLIED OR PLATED FINISHES			SCALE				5052, H-32		
DECIMALS .X ± .05 .XX ± .01 .XXX ± .005			FRACTIONS ± 1/64 ANGLES ± 0° 30'			CODE A		A TURSI aa Rpt	
TOLERANCES			SCALE				TYPE & TEMPER		S-245 SILVER PLATE BRIGHT
							HEAT TREAT. SPEC.		
							DRAWN		MS-3521 B
							CHECKED		
							FINAL APPROVAL		
							ELEC. DES. APP.		
							MECH. DES. APP.		



REQ. PER UNIT	USED ON		
	MODEL	ASS'Y. NO.	DATE
2	TER18K600BF		9 - 30 - 63
2	TER25K600BF		1 - 4 - 65

MS-3522 Ø

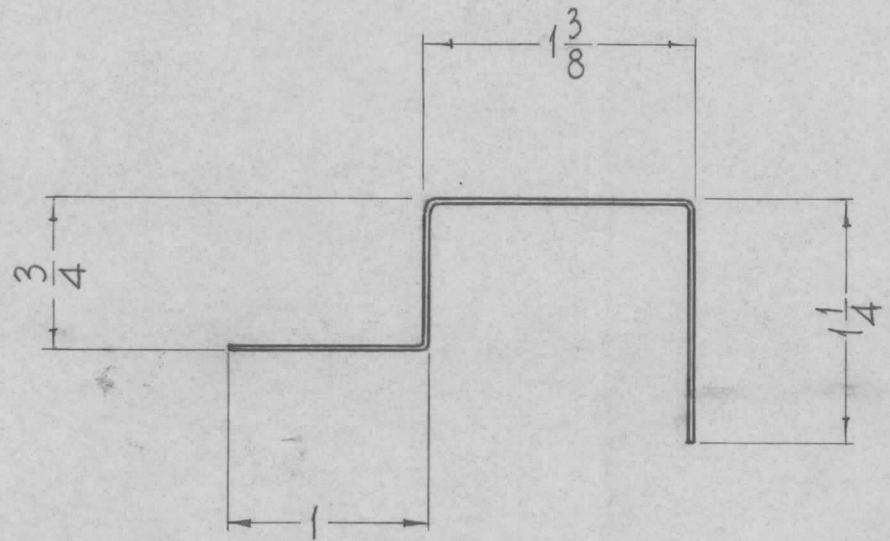


3/4

METAL STAMP TMC PART NO. 1/8 HIGH GOTHIC. W/LATEST REV. LETTER

UNLESS OTHERWISE SPECIFIED:

1. USE MATERIAL THICKNESS FOR MAXIMUM RADIUS ON ALL BENDS.
2. ALL ANGULAR BENDS 90°.
3. REMOVE ALL BURRS AND SHARP EDGES.

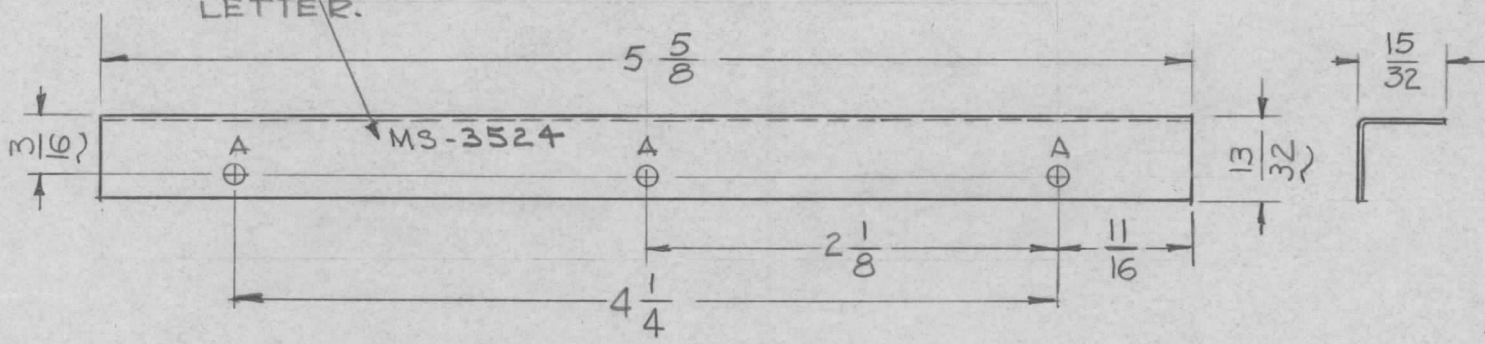


SYM	DESCRIPTION	DATE	CH. NO.	DRAFTS	CHECKER	ENG. APP.	REQ. ITEM	PART NO.	F. BUDETTI	DESCRIPTION	SYMBOL
Ø	ORIGINAL RELEASE FOR PRODUCTION	6-9-65	#	JC						THE TECHNICAL MATERIEL CORP. MAMARONECK, NEW YORK  STRAP, FORMED, COIL MTG.	MS-3522 Ø
X2	FINISH Ø MODEL ADDED	1-4-65		SRG			.030 THICK				
X1	TER18K600BF WAS TER15K600BF	1-13-64		SRG			STOCK SIZE				
							COPPER				
							MATERIAL				
UNLESS OTHERWISE SPECIFIED DIMENSIONS ARE IN INCHES AND INCLUDE CHEMICALLY APPLIED OR PLATED FINISHES		SCALE		1" = 1"			SOFT		John C. Biele	J.S.	16/9/65
DECIMALS .X ± .05 .XX ± .01 .XXX ± .005	TOLERANCES	FRACTIONS ± 1/64 ANGLES ± 0° 30'	CODE				TYPE & TEMPER	HEAT TREAT. SPEC.	DRAWN	CHECKED	FINAL APPROVAL
							S245 SILVER PLATE				
							FINISH & SPEC. NO.		ELEC. DES. APP.	MECH. DES. APP.	

REQ. PER UNIT	USED ON			MS-3524 A
	MODEL	ASS'Y. NO.	DATE	
2	GPR-90RXD	A-3273	9-14-63	
2	GPR-91RXD	A-3273	9-14-63	

HOLE	DESCRIPTION	REQ.
A	.093 DIA.	3

STAMP TMC PART NO.  
1/8 HIGH GOTHIC.  
WITH LATEST REV.  
LETTER.



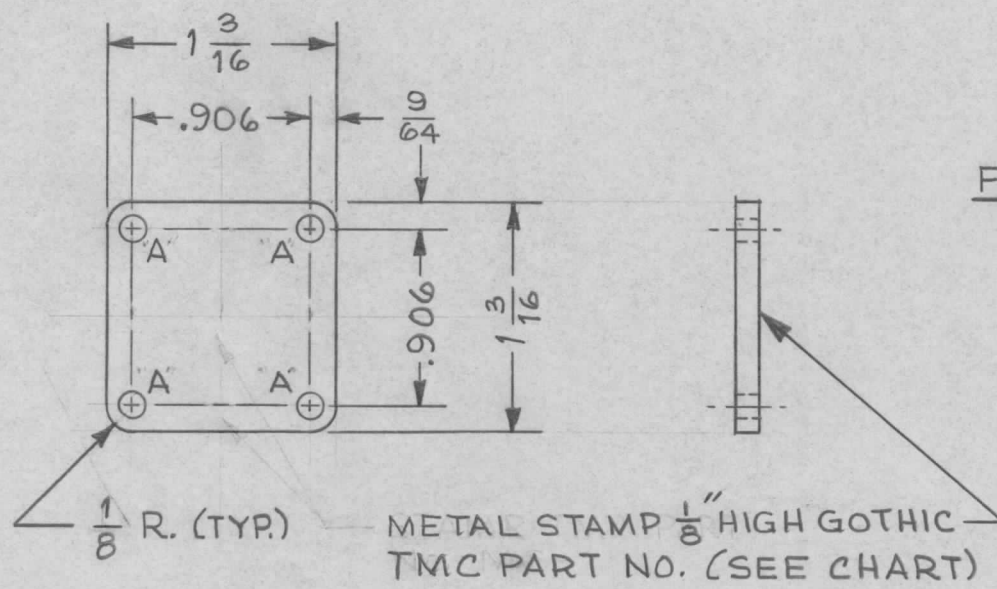
- NOTE -

1. USE MATERIAL THICKNESS FOR  
MAXIMUM RADIUS ON ALL BENDS.

REQ.	ITEM	PART NO.	PRITCHARD DESCRIPTION				SYMBOL		
			.005 THK.				THE TECHNICAL MATERIEL CORP. MAMARONECK. NEW YORK		
			STOCK SIZE						
A			BRASS				SHIM, COVER		
SYM	DESCRIPTION	DATE	CH. NO.	DRAFTS	CHECKER	ENG. APP.			
UNLESS OTHERWISE SPECIFIED DIMENSIONS ARE IN INCHES AND INCLUDE CHEMICALLY APPLIED OR PLATED FINISHES		SCALE		1:1					
DECIMALS .X ± .05 .XX ± .01 .XXX ± .005	TOLERANCES	FRACTIONS ± 1/64 ANGLES ± 0° 30'	CODE						
				TYPE & TEMPER		HEAT TREAT. SPEC.	DRAWN	CHECKED	FINAL APPROVAL
				FINISH & SPEC. NO.		ELEC. DES. APP.	MECH. DES. APP.	MS-3524 A	



TMC PART NO.	"A" HOLE	REQ. PER UNIT	USED ON		MS-3528
MS-3528 -1	1/8 DIA.	MODEL	ASS'Y. NO.	DATE	
MS-3528 -2	6-32 DRILL & TAP	JPP-HX55D0B8		9-26-63	



FINISH NOTES:

- 1- S404 IRIDITE
- 2- FRONT & EDGES ONLY:
  - (A) S114 ZINC CHROMATE PRIMER
  - (B) S115 TMC SMOOTH GRAY ENAMEL OR PRIME & PAINT TO CUST. SPEC.

FRONT VIEW

SYM	DESCRIPTION	DATE	CH. NO.	DRAFTS	CHECKER	ENG. APP.	REQ. ITEM	PART NO.	MARTINENGO DESCRIPTION	SYMBOL
							1/8		THE TECHNICAL MATERIEL CORP. MAMARONECK, NEW YORK	
							ALUMINUM		COVER BLANK	
									13/16 SQ	
							2024-T3		M TANTILLO 9-26-63	
							SEE NOTES		9-30-63	
							FINISH & SPEC. NO.		ELEC. DES. APP. MECH. DES. APP.	MS-3528

UNLESS OTHERWISE SPECIFIED  
DIMENSIONS ARE IN INCHES AND INCLUDE  
CHEMICALLY APPLIED OR PLATED FINISHES

DECIMALS  
.X ± .05  
.XX ± .01  
.XXX ± .005

FRACTIONS  
± 1/64  
ANGLES  
± 0° 30'

TOLERANCES

SCALE

CODE

TYPE & TEMPER

HEAT TREAT. SPEC.

DRAWN

CHECKED

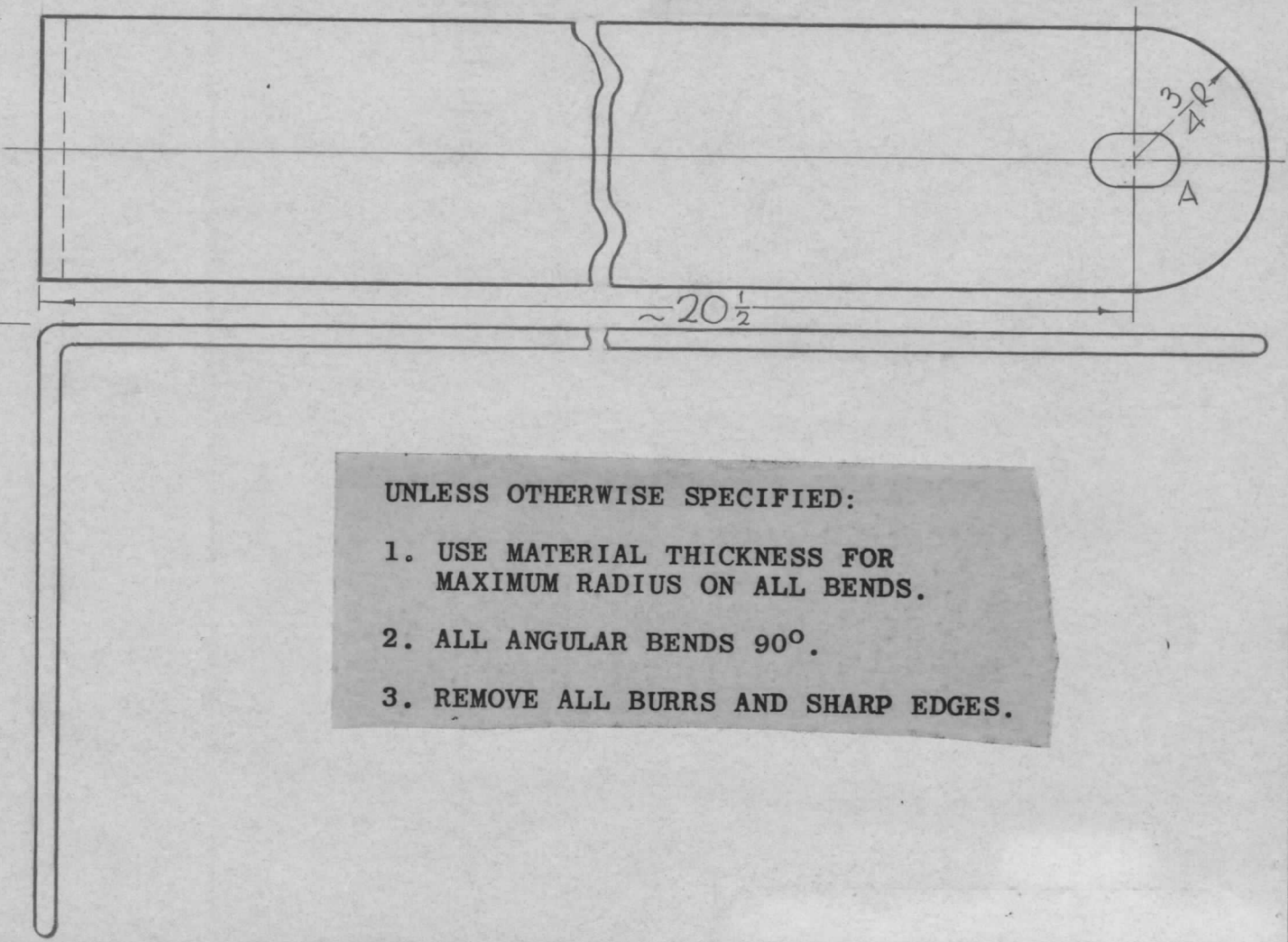
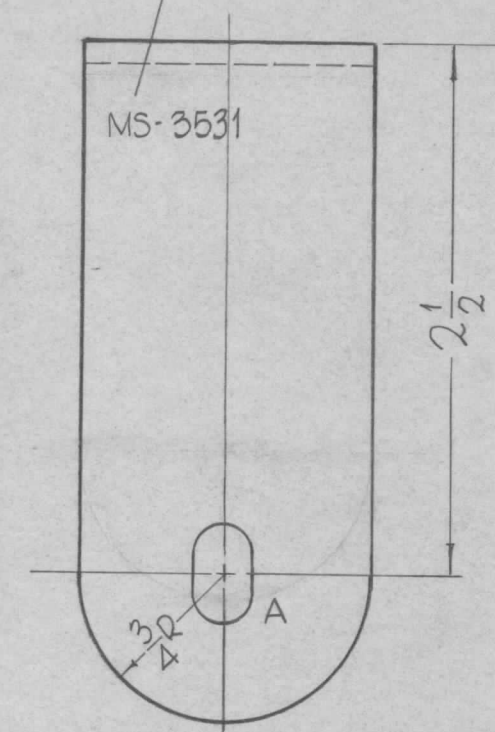
FINAL APPROVAL

REQ. PER UNIT	USED ON			MS-3531	O
	MODEL	ASS'Y. NO.	DATE		
1	GPT-200K	AX-395	10-5-63		

HOLES  
A- 5/16 X 1/2 SLOTS

REQ  
2

METAL STAMP TMC PART NO.  
1/8 HIGH GOTHIC.

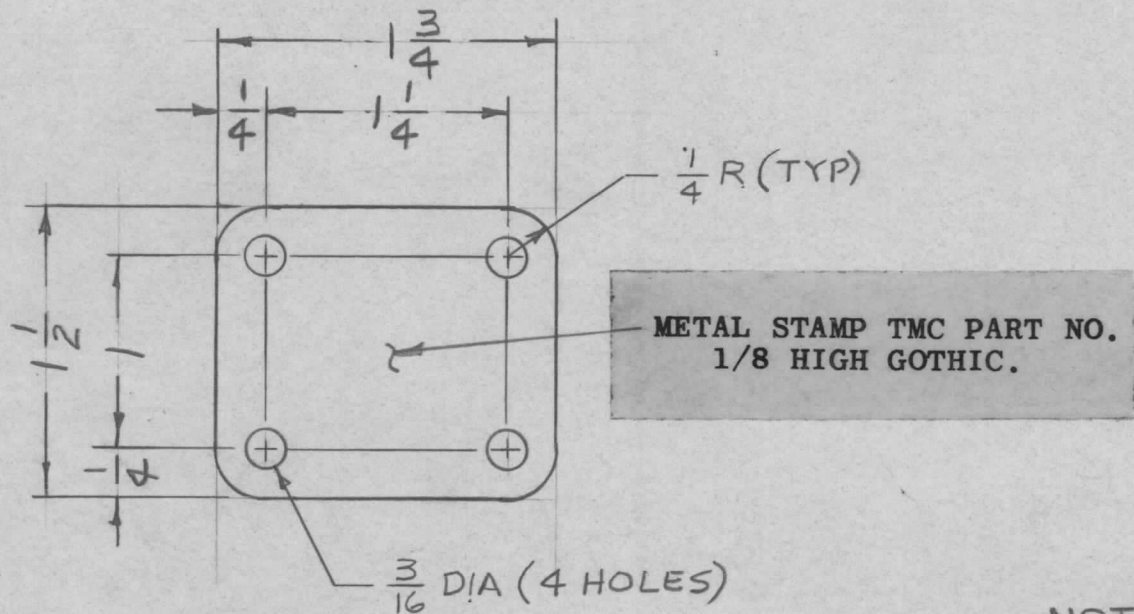


**UNLESS OTHERWISE SPECIFIED:**

1. USE MATERIAL THICKNESS FOR MAXIMUM RADIUS ON ALL BENDS.
2. ALL ANGULAR BENDS 90°.
3. REMOVE ALL BURRS AND SHARP EDGES.

REQ.	ITEM	PART NO.	F. BUDETTI	DESCRIPTION	SYMBOL
		1/8 THICK		THE TECHNICAL MATERIEL CORP.	
		STOCK SIZE		MAMARONECK, NEW YORK	
0	ORIGINAL RELEASE	5.18.64	WB	BRACKET, X	
		ALUMINUM		H.V. CONNECTION	
UNLESS OTHERWISE SPECIFIED DIMENSIONS ARE IN INCHES AND INCLUDE CHEMICALLY APPLIED OR PLATED FINISHES		SCALE	5052 H-32	John C. Bielez	RAC
		1" = 1"			
DECIMALS	FRACTIONS	CODE	TYPE & TEMPER	HEAT TREAT. SPEC.	DRAWN
.X ± .05	± 1/64		S-245-SILVER PLATE, BRIGHT		12/64
.XX ± .01	ANGLES				
.XXX ± .005	± 0° 30'				
TOLERANCES			FINISH & SPEC. NO.	ELEC. DES. APP.	MECH. DES. APP.
					MS-3531 O

REQ. PER UNIT	USED ON			MS-3534 0
	MODEL	ASS'Y. NO.	DATE	
1	GPT 200K	AX-395	10-17-63	



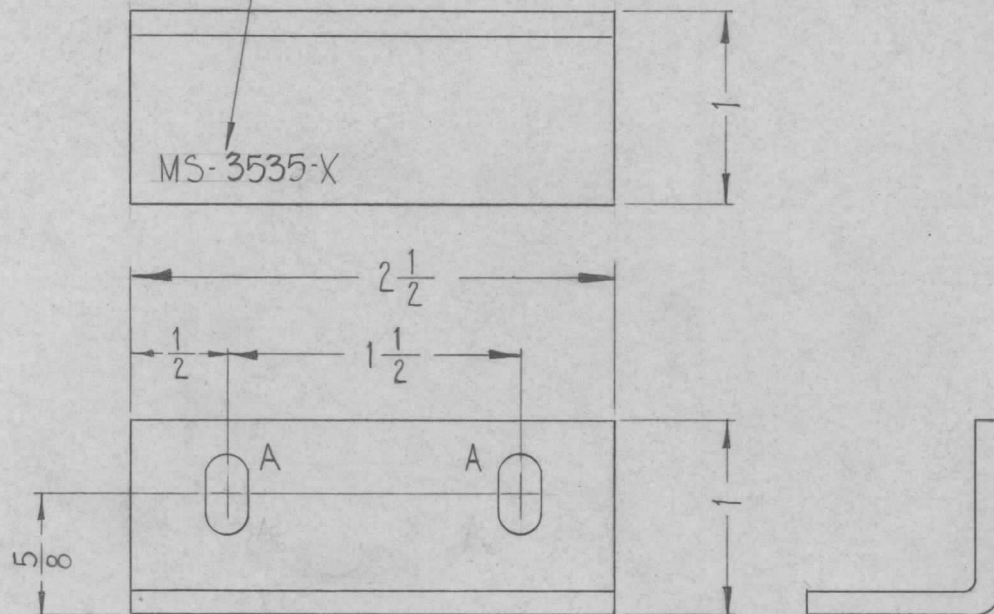
NOTES: REMOVE ALL BURRS & SHARP EDGES  
BEFORE PLATING

REQ.	ITEM	PART NO.	DESCRIPTION				SYMBOL	
		.031 THICK	THE TECHNICAL MATERIEL CORP. MAMARONECK, NEW YORK				0	
		STOCK SIZE						
		COPPER	PLATE, CONDUCTOR					
0	ORIGINAL RELEASE	5.18.64		WB				
SYM	DESCRIPTION	DATE	CH. NO.	DRAFTS	CHECKER	ENG. APP.	MATERIAL	
UNLESS OTHERWISE SPECIFIED DIMENSIONS ARE IN INCHES AND INCLUDE CHEMICALLY APPLIED OR PLATED FINISHES		SCALE	1 = 1					A TURS
								aa
								RJC
								OR B
								MS-3534 0
DECIMALS .X ± .05 .XX ± .01 .XXX ± .005		FRACTIONS ± 1/64 ANGLES ± 0° 30'		TOLERANCES		FINISH & SPEC. NO.		
						ELEC. DES. APP. MECH. DES. APP.		

REQ. PER UNIT	USED ON		
	MODEL	ASS'Y. NO.	DATE
2	GPT-200K	AP-109	10-17-63
2	GPT-200K	AP-111	10-17-63

MS-3535 0

METAL STAMP TMC PART NO.  
1/8 HIGH GOTHIC.



HOLE	DESCRIPTION	REQ.
A	1/4 X 1/2 SLOT	2

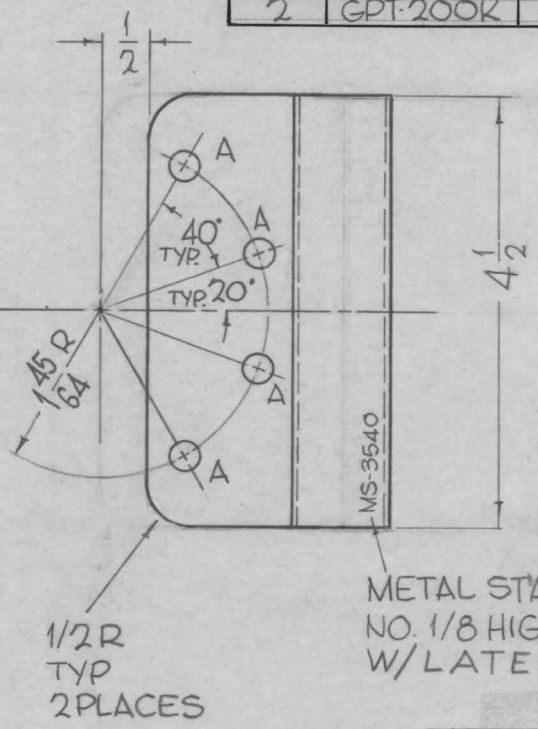
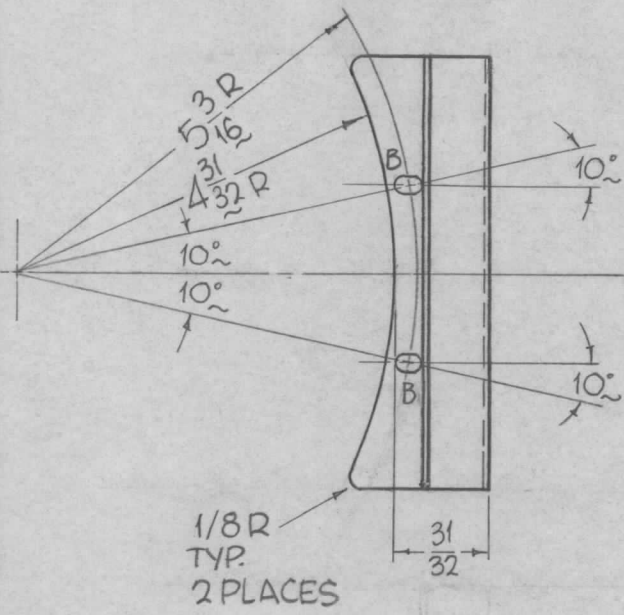
UNLESS OTHERWISE SPECIFIED:

1. USE MATERIAL THICKNESS FOR MAXIMUM RADIUS ON ALL BENDS.
2. ALL ANGULAR BENDS 90°.
3. REMOVE ALL BURRS AND SHARP EDGES.

MS-3535-1 AS SHOWN FINISH S404  
MS-3535-2 AS SHOWN FINISH S404

SYM	DESCRIPTION	DATE	CH. NO.	DRAFTS	CHECKER	ENG. APP.	REQ. ITEM	PART NO.	F. BUDETTI	DESCRIPTION	SYMBOL	
0	ORIGINAL RELEASE	5.16.64					1 X 1 X 1/8 THICK $\nabla$			THE TECHNICAL MATERIEL CORP. MAMARONECK, NEW YORK	BRACKET, SUPPORT	
X2	-1, -2 DELETED. FINISH, S404	12-23-63					STOCK SIZE					
X1	DWG MADE MS-3535-1, -2	12-2-63					ALUMINUM					
UNLESS OTHERWISE SPECIFIED DIMENSIONS ARE IN INCHES AND INCLUDE CHEMICALLY APPLIED OR PLATED FINISHES		SCALE	Do Not Scale				5052-H32	TYPE & TEMPER	HEAT TREAT. SPEC.	W.A. FRANCO	aa	RAE
DECIMALS .X $\pm$ .05 .XX $\pm$ .01 .XXX $\pm$ .005		TOLERANCES		FRACTIONS $\pm$ 1/64 ANGLES $\pm$ 0° 30'		CODE	S404-IRIDITE, 14-2 AL. COAT		FINISH & SPEC. NO.	DRAWN	CHECKED	FINAL APPROVAL
												MS-3535 0

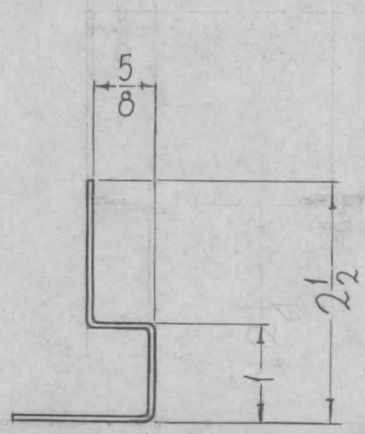
REQ. PER UNIT	USED ON			MS-3540	Ø
	MODEL	ASS'Y. NO.	DATE		
2	GPT-200K	AX-393	12-27-63		



HOLES	REQ
A-5/16 DIA.	4
B-3/16 X 5/16 SLOTS	2

METAL STAMP TMC  
NO. 1/8 HIGH GOTHIC  
W/LATEST REVISION

- UNLESS OTHERWISE SPECIFIED:
1. USE MATERIAL THICKNESS FOR MAXIMUM RADIUS ON ALL BENDS.
  2. ALL ANGULAR BENDS 90°.
  3. REMOVE ALL BURRS AND SHARP EDGES.



REF-LD-1371

Ø	ORIGINAL RELEASE FOR PRODUCTION	5-13-64	0	A.M.		REQ. ITEM	PART NO.	F. BUDETTI	DESCRIPTION	SYMBOL	
X3	1" DIM. WAS 2-1/4, 2-1/2 DIM WAS 4-1/4 SHORTENED, BECAUSE POSSIBILITY OF GRINDING	2-13-64				1/16 THICK		THE TECHNICAL MATERIEL CORP. MAMARONECK, NEW YORK			
X2	4-1/4 DIM WAS 4-3/4	1-27-64				STOCK SIZE		BRACKET, ELECTRICAL CAPACITOR MTG			
X1	REVISED & REDRAWN	12-27-63				COPPER					
SYM	DESCRIPTION	DATE	CH. NO.	DRAFTS	CHECKER	ENG. APP.	MATERIAL				
UNLESS OTHERWISE SPECIFIED DIMENSIONS ARE IN INCHES AND INCLUDE CHEMICALLY APPLIED OR PLATED FINISHES		SCALE					HALF HARD	John C Biele	aa	RDL	
							TYPE & TEMPER	HEAT TREAT. SPEC.	DRAWN	CHECKED	FINAL APPROVAL
DECIMALS .X ± .05 .XX ± .01 .XXX ± .005	TOLERANCES	FRACTIONS ± 1/64 ANGLES ± 0° 30'	CODE A				S-245-SILVER PLATE		OB	ac 1/1/64	MS-3540
							FINISH & SPEC. NO.	ELEC. DES. APP.	MECH. DES. APP.	MS-3540	



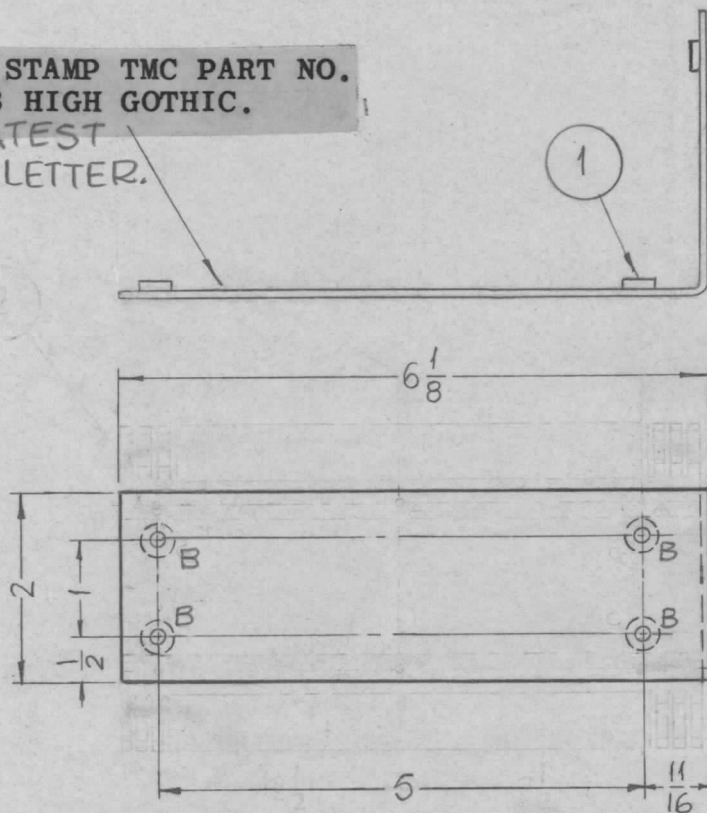


REQ. PER UNIT	USED ON			MS-3545	A
	MODEL	ASS'Y. NO.	DATE		
1	GPT-200K	AX-395	11-12-63		

UNLESS OTHERWISE SPECIFIED:

1. USE MATERIAL THICKNESS FOR MAXIMUM RADIUS ON ALL BENDS.
2. ALL ANGULAR BENDS 90°.
3. REMOVE ALL BURRS AND SHARP EDGES.
4. MOUNT INSERTS AFTER FINISHING.

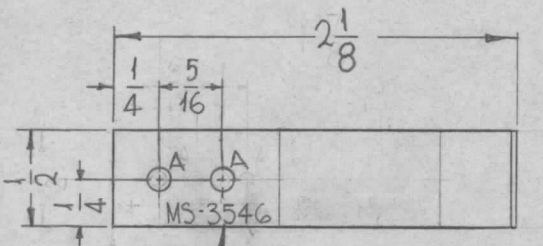
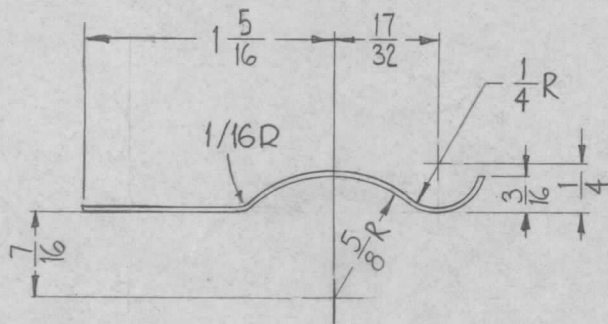
METAL STAMP TMC PART NO.  
1/8 HIGH GOTHIC.  
W/LATEST  
REV. LETTER.



HOLE  
HOLES:  
B ~ .221-.224 DIA. - REQ.

6	1	NT-129-832-4	NUT ROUND, SPLINE			B
REQ. ITEM	PART NO.		F. BUDETTI DESCRIPTION			SYMBOL
A	.081 THICK		THE TECHNICAL MATERIEL CORP.			
0	STOCK SIZE		MAMARONECK, NEW YORK			
SYM	DESCRIPTION		BRACKET, PA. SHIELD			
	DATE		MATERIAL			
	CH. NO.		5052-H32			
	DRAFTS		TYPE & TEMPER			
	CHECKER		HEAT TREAT. SPEC.			
	ENG. APP.		DRAWN			
UNLESS OTHERWISE SPECIFIED		SCALE		SRG		
DIMENSIONS ARE IN INCHES AND INCLUDE		1/2" = 1"		aa		
CHEMICALLY APPLIED OR PLATED FINISHES				CHECKED		
DECIMALS	FRACTIONS		S-404 YELLOW IRIDITE		FINAL APPROVAL	
.X ± .05	± 1/64		FINISH & SPEC. NO.		ELEC. DES. APP. MECH. DES. APP.	
.XX ± .01	ANGLES		MS-3545		A	
.XXX ± .005	± 0° 30'					

REQ. PER UNIT	USED ON			MS-3546	0
	MODEL	ASS'Y. NO.	DATE		
12	GPT-200K	AX-395	11-13-63		



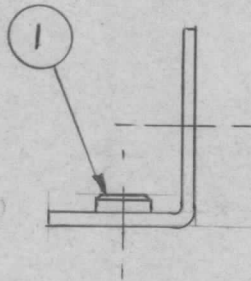
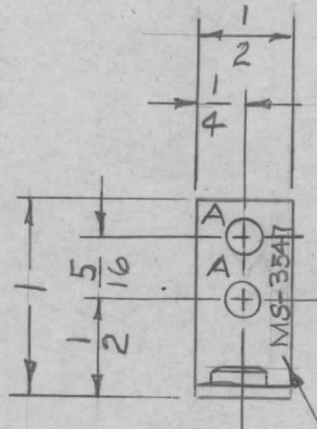
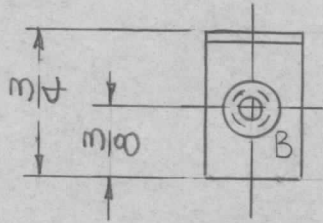
HOLE	DESCRIPTION	REQ.
A	.125 DIA.	2

NOTE:  
HARDENING PROCESS 2 HOURS AT 600° F.

METAL STAMP TMC PART NO.  
1/8 HIGH GOTHIC.

SYM	DESCRIPTION	DATE	CH. NO.	DRAFTS	CHECKER	ENG. APP.	REQ. ITEM	PART NO.	DESCRIPTION	SYMBOL	
0	ORIGINAL RELEASE	5.16.64			JTB				F. BUDETTI		
	NOTE REMOVED WAS 2 HOURS AT 600° F MTRL WAS BERL COPPER							.030	THE TECHNICAL MATERIEL CORP. MAMARONECK, NEW YORK		
XI	HOLES WERE .067, 1/4 WAS 3/16, 5/16 WAS 1/4 DIM. 1-5/16 WAS 1-1/16, 2 1/8 WAS 1-7/8	5-13-64			SRG			STOCK SIZE			
								GRADE A SPRING PHOSPHOR	SPRING, CLIP		
								MATERIAL			
UNLESS OTHERWISE SPECIFIED DIMENSIONS ARE IN INCHES AND INCLUDE CHEMICALLY APPLIED OR PLATED FINISHES		SCALE	1" = 1"							W A FRANCO	aa
									DRAWN	CHECKED	FINAL APPROVAL
DECIMALS .X ± .05 .XX ± .01 .XXX ± .005		FRACTIONS ± 1/64 ANGLES ± 0° 30'		TOLERANCES		CODE			S-245 SILVER PLATE	2.R	MS-3546
								FINISH & SPEC. NO.	ELEC. DES. APP.	MECH. DES. APP.	

REQ. PER UNIT	USED ON			MS-3547 0
	MODEL	ASS'Y. NO.	DATE	
4	GPT 200K	AX444	5/23/64	
2	GPT 200K	AP 111	10-27-63	



**UNLESS OTHERWISE SPECIFIED:**

1. USE MATERIAL THICKNESS FOR MAXIMUM RADIUS ON ALL BENDS.
2. ALL ANGULAR BENDS 90°.
3. REMOVE ALL BURRS AND SHARP EDGES.
4. MOUNT INSERTS AFTER FINISHING.

**FINISH NOTES:**

1. S404 - IRIDITE 14-2 AL-COAT.
2. S114 - ZINC CHROMATE PRIMER
3. S520 - BLUE-GRAY TEXTURED VINYL PAINT (ALL OVER)

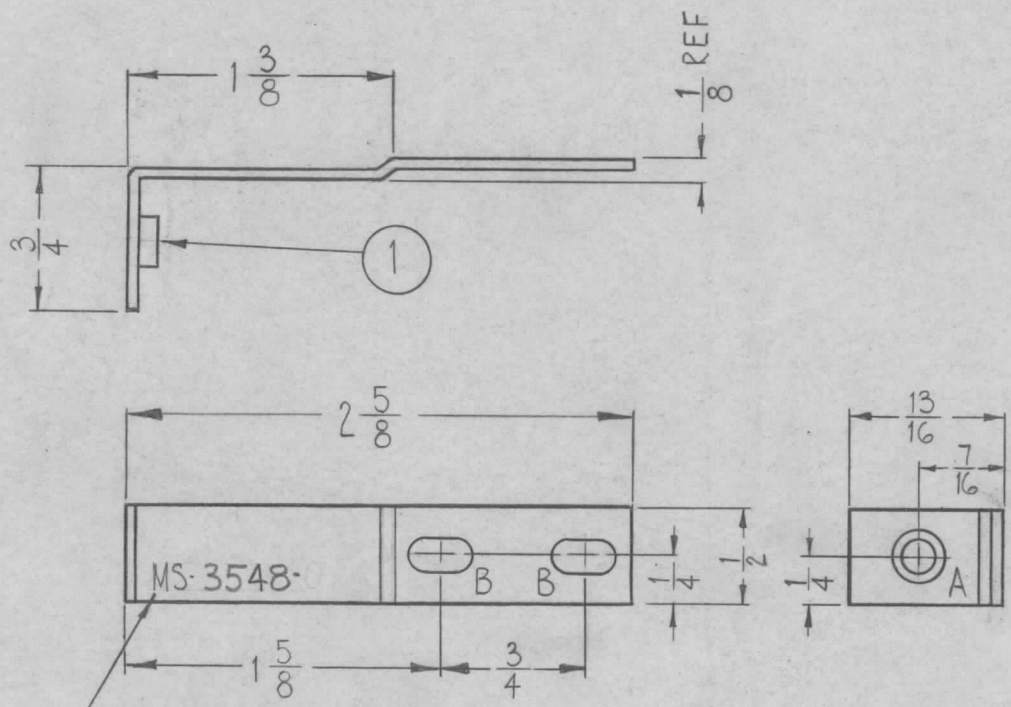
METAL STAMP TMC PART NO. 1/8 HIGH GOTHIC.

A ~ 11/64 DIA. 2 REQ.  
B ~ .191-.194 DIA. 1 REQ.

						1	1	NT129-632-4	NUT, ROUND, SWAGE TYPE	B	
						REQ. ITEM		PART NO.	DESCRIPTION	SYMBOL	
								.081 THICK	THE TECHNICAL MATERIEL CORP. MAMARONECK, NEW YORK	BRACKET, SUPPORT	
								STOCK SIZE			
								ALUMINUM			
0	ORIGINAL RELEASE FOR PRODUCTION	6/18/64		JSB				MATERIAL			
SYM	DESCRIPTION	DATE	CH. NO.	DRAFTS	CHECKER	ENG. APP.					
UNLESS OTHERWISE SPECIFIED DIMENSIONS ARE IN INCHES AND INCLUDE CHEMICALLY APPLIED OR PLATED FINISHES		SCALE	1 = 1					5052	H-32	A TURS I	RSB RAL
DECIMALS .X ± .05 .XX ± .01 .XXX ± .005	TOLERANCES	FRACTIONS ± 1/64 ANGLES ± 0° 30'	CODE				TYPE & TEMPER	HEAT TREAT. SPEC.	DRAWN	CHECKED	FINAL APPROVAL
							SEE NOTES		RSB	RAL	MS-3547 0
							FINISH & SPEC. NO.		ELEC. DES. APP.	MECH. DES. APP.	

REQ. PER UNIT	USED ON			MS-3548	0
	MODEL	ASS'Y. NO.	DATE		
4	GPT-200K	AR-137	11-13-63		
4	GPT-200K	AR-138	11-13-63		

HOLE	DESCRIPTION	REQ.
A	.191-.194 DIA.	1
B	11/64 X 11/32 SLOT	2



METAL STAMP TMC PART NO.  
W/LATEST REV. LETTER  
1/8 HIGH GOTHIC.

**UNLESS OTHERWISE SPECIFIED:**

1. USE MATERIAL THICKNESS FOR MAXIMUM RADIUS ON ALL BENDS.
2. ALL ANGULAR BENDS 90°.
3. REMOVE ALL BURRS AND SHARP EDGES.
4. MOUNT INSERTS BEFORE FINISHING.

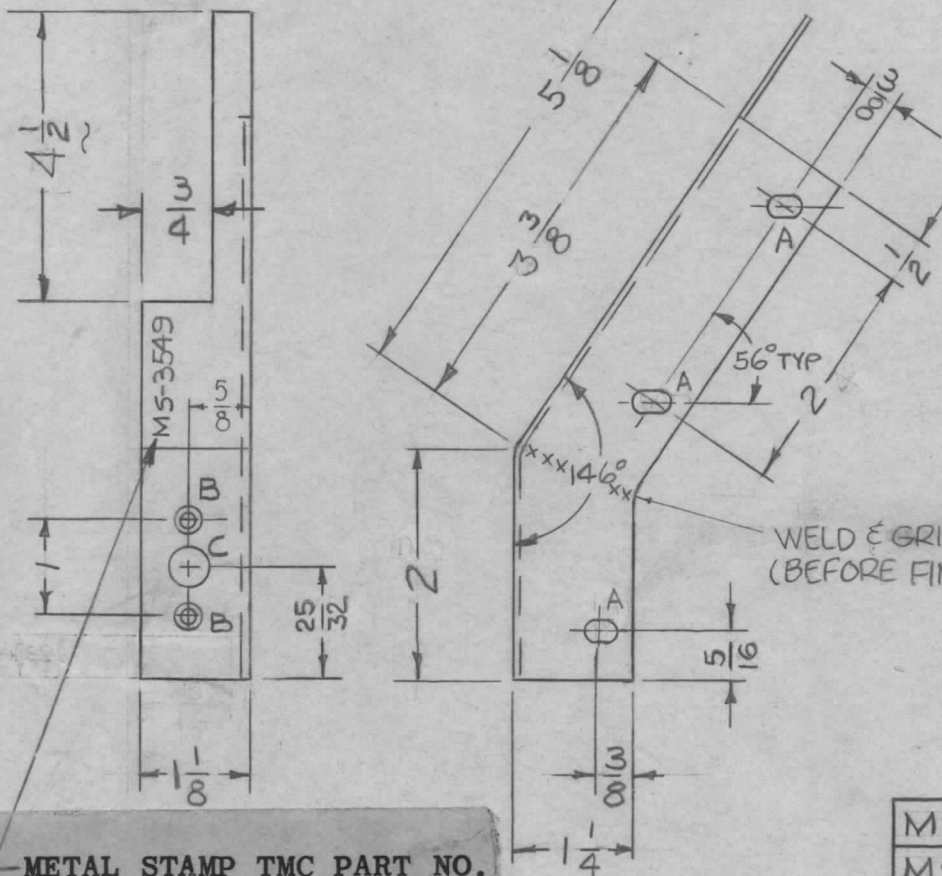
**FINISH NOTES:**

1. S404 - IRIDITE 14-2 AL-COAT.
2. S114 - ZINC CHROMATE PRIMER
3. S520 - BLUE-GRAY TEXTURED VINYL PAINT (ALL OVER).

1	1	NT-129-632-4	NUT, ROUND, SWAGE TYPE			A
REQ.	ITEM	PART NO.	F. BUDETTI DESCRIPTION			SYMBOL
		.062 THICK	THE TECHNICAL MATERIEL CORP.			
		STOCK SIZE	MAMARONECK, NEW YORK			
0	ORIGINAL RELEASE FOR PROD.	4-24-64	SRG	BRACKET, COVER MTG.		
SYM	DESCRIPTION	DATE	CH. NO.	DRAFTS	CHECKER	ENG. APP.
UNLESS OTHERWISE SPECIFIED DIMENSIONS ARE IN INCHES AND INCLUDE CHEMICALLY APPLIED OR PLATED FINISHES		SCALE	1:1			
DECIMALS .X ± .05 .XX ± .01 .XXX ± .005	TOLERANCES	FRACTIONS ± 1/64 ANGLES ± 0° 30'	CODE A	5052-H32		
		TYPE & TEMPER		HEAT TREAT. SPEC.	DRAWN	CHECKED
		SEE NOTES			W.A. FRANCO	aa
		FINISH & SPEC. NO.			MECH. DES. APP.	FINAL APPROVAL
						MS-3548 0

A - 15/64 X 15/32 SLOT — 3 REQ'D  
 B - DRILL & CSINK #4-40 — 2 REQ'D  
 C - 1/2 DIA — 1 REQ'D

REQ. PER UNIT	USED ON			MS-3549	A
	MODEL	ASS'Y. NO.	DATE		
4	GPT 200K	AX-444	10-24-63		



UNLESS OTHERWISE SPECIFIED:

1. USE MATERIAL THICKNESS FOR MAXIMUM RADIUS ON ALL BENDS.
2. ALL ANGULAR BENDS 90°.
3. REMOVE ALL BURRS AND SHARP EDGES.

FINISH NOTES:

1. S404 - IRIDITE 14-2 AL-COAT.
2. S114 - ZINC CHROMATE PRIMER
3. S520 - BLUE-GRAY TEXTURED VINYL PAINT (ALL OVER)

METAL STAMP TMC PART NO.  
 1/8 HIGH GOTHIC.  
 WITH LATEST REVISION LETTER

MS 3549 - 1	AS SHOWN
MS 3549 - 2	OPPOSITE HAND

REQ.	ITEM	PART NO.	F. BUDETTI			DESCRIPTION	SYMBOL
			.081 THICK			THE TECHNICAL MATERIEL CORP. MAMARONECK, NEW YORK	BRACKET, SUPPORT
			STOCK SIZE				
			ALUMINUM				
			MATERIAL				
			5052	H-32	A TURSI	ea	RC
			TYPE & TEMPER	HEAT TREAT. SPEC.	DRAWN	CHECKED	FINAL APPROVAL
			S404 IRIDITE 14-2 AL COAT		DB	RC	MS-3549
			FINISH & SPEC. NO.		ELEC. DES. APP.	MECH. DES. APP.	A

UNLESS OTHERWISE SPECIFIED  
 DIMENSIONS ARE IN INCHES AND INCLUDE  
 CHEMICALLY APPLIED OR PLATED FINISHES

DECIMALS  
 .X ± .05  
 .XX ± .01  
 .XXX ± .005

FRACTIONS  
 ± 1/64  
 ANGLES  
 ± 0° 30'

TOLERANCES

SCALE  
 1 = 2

CODE  
 A

HOLES

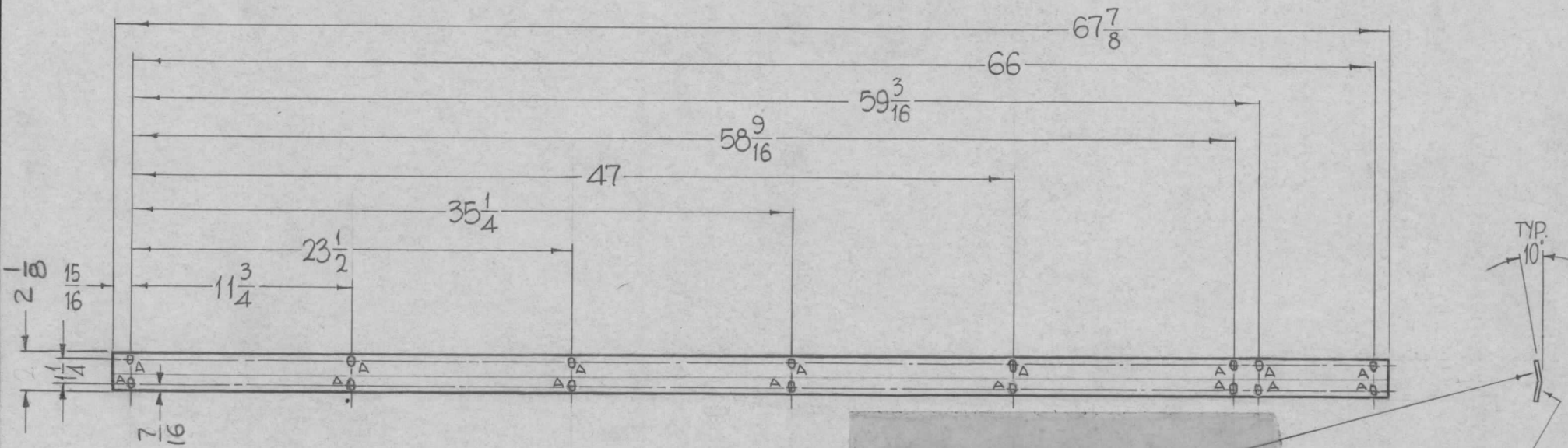
REQ.

A-7/32 X 3/8 SLOT

16

REQ. PER UNIT	USED ON		
	MODEL	ASS'Y. NO.	DATE
1	TER-18K600BF		10-8-63

MS-3550 Ø



REAR VIEW SHOWN

STAMP TMC PART NO.  
1/8 HIGH GOTHIC.

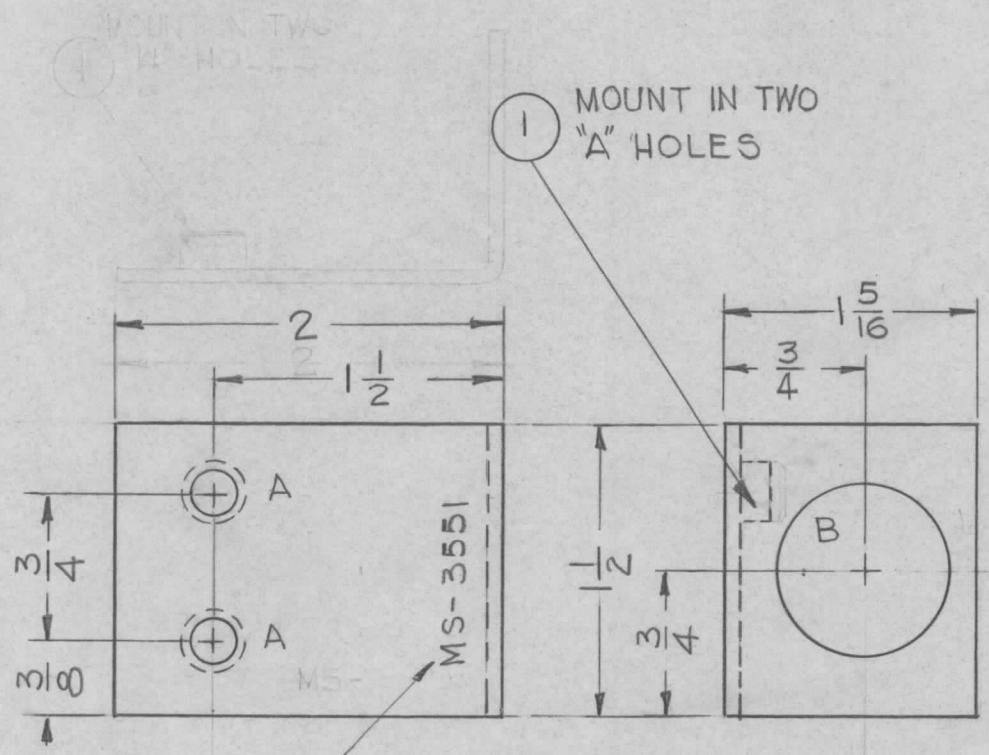
FINISH ON THIS SIDE.

**FINISH NOTES:**

1. S404 - IRIDITE 14-2 AL-COAT.
2. S114 - ZINC CHROMATE PRIMER) FRONT AND
3. S115 - SMOOTH GRAY ENAMEL ) EDGES ONLY

SYM	DESCRIPTION	DATE	CH. NO.	DRAFTS	CHECKER	ENG. APP.	REQ. ITEM	PART NO.	F. BUDETTI	DESCRIPTION	SYMBOL	
Ø	ORIGINAL RELEASE FOR PRODUCTION	1-13-66	AA	Jc						THE TECHNICAL MATERIEL CORP. MAMARONECK, NEW YORK	STRIP TRIM	
X2	DIA "A" HOLE WAS 7/32 DIMS 2 1/8 WAS 2 & 7/16 WAS 3/8	6-15-65		G.D.L.			.064 THICK					
X1	TER18K-600BF WAS TER15K600BF	1-13-64		SRG			ALUMINUM					
	UNLESS OTHERWISE SPECIFIED DIMENSIONS ARE IN INCHES AND INCLUDE CHEMICALLY APPLIED OR PLATED FINISHES	SCALE 1/8" = 1"						5052-H-32	John C. Biele	gcb	1/13/66	
							TYPE & TEMPER	HEAT TREAT. SPEC.	DRAWN	CHECKED	FINAL APPROVAL	
	DECIMALS .X ± .05 .XX ± .01 .XXX ± .005	FRACTIONS ± 1/64 ANGLES ± 0° 30'	CODE				SEE NOTES		aa			
	TOLERANCES						FINISH & SPEC. NO.		ELEC. DES. APP.	MECH. DES. APP.	MS-3550 Ø	

REQ. PER UNIT	USED ON		MS-3551 $\emptyset$
	MODEL	DATE	
1	GPT-10K	11-12-63	



HOLE	DESCRIPTION	REQ.
A	.221 - .224 DIA.	2
B	7/8 DIA.	1

- UNLESS OTHERWISE SPECIFIED:**
1. USE MATERIAL THICKNESS FOR MAXIMUM RADIUS ON ALL BENDS.
  2. ANGULAR BEND 90°.
  3. REMOVE ALL BURRS AND SHARP EDGES.
  4. MOUNT INSERTS AFTER FINISHING.

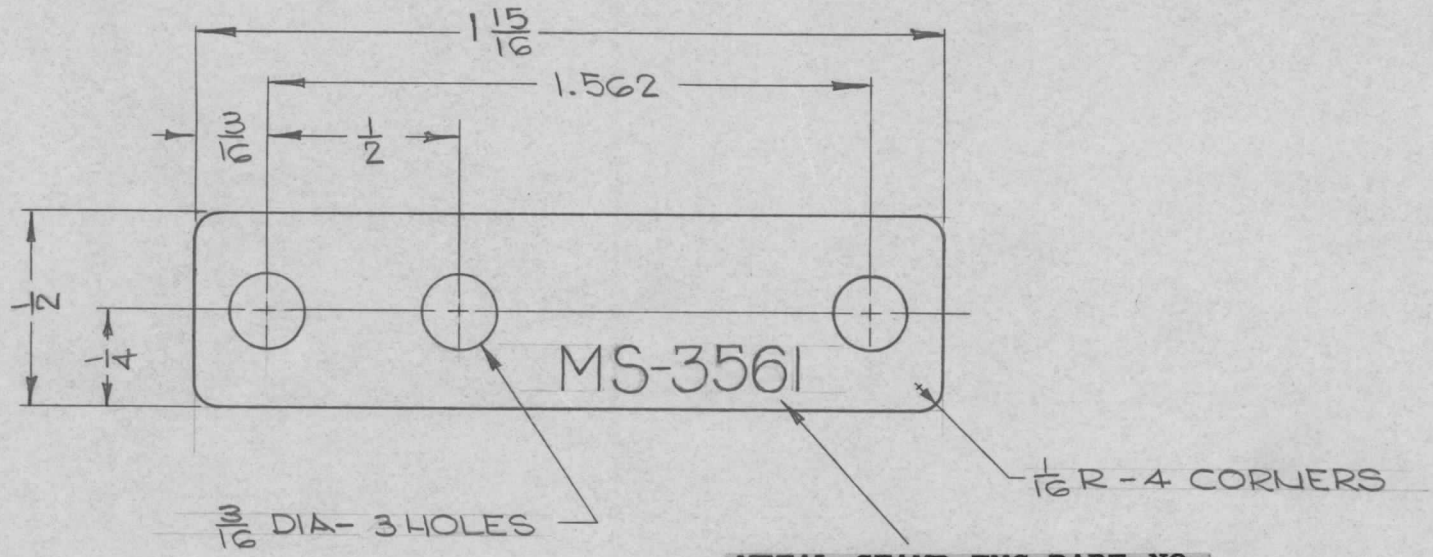
METAL STAMP TMC PART NO.  
1/8 HIGH GOTHIC.

						2	1	NT-129-832-4	NUT, ROUND, SWAGE TYPE	A		
						REQ. ITEM		PART NO.	0_POSE DESCRIPTION	SYMBOL		
								.081 THK	THE TECHNICAL MATERIEL CORP. MAMARONECK. NEW YORK			
								ALUMINUM	BRACKET, MOUNTING CONNECTOR CABLE			
$\emptyset$	ORIGINAL RELEASE	7/15/69		W				MATERIAL				
SYM	DESCRIPTION	DATE	CH. NO.	DRAFTS	CHECKER	ENG. APP.		5052-H32	G.D.L			
UNLESS OTHERWISE SPECIFIED DIMENSIONS ARE IN INCHES AND INCLUDE CHEMICALLY APPLIED OR PLATED FINISHES		SCALE						TYPE & TEMPER	HEAT TREAT. SPEC.	DRAWN	CHECKED	FINAL APPROVAL
DECIMALS	TOLERANCES	FRACTIONS	CODE					S404 IRIDITE 14-2 ALCOAT		AK	AN	MS-3551 $\emptyset$
.X $\pm$ .05		$\pm$ 1/64	A					FINISH & SPEC. NO.	ELEC. DES. APP.	MECH. DES. APP.		
.XX $\pm$ .01		ANGLES										
.XXX $\pm$ .005		$\pm$ 0° 30'										





REQ. PER UNIT	USED ON			MS-3561
	MODEL	ASS'Y. NO.	DATE	
1	TTR-10	A-2831	7-63	



METAL STAMP TMC PART NO. 1/8 HIGH GOTHIC.

REF: LD-1400

							REQ. ITEM	PART NO.	KOHN	DESCRIPTION	SYMBOL	
								.064		THE TECHNICAL MATERIEL CORP. MAMARONECK. NEW YORK		
								STOCK SIZE				
								ALUMINUM		PLATE, CAPACITOR MTG		
SYM	DESCRIPTION	DATE	CH. NO.	DRAFTS	CHECKER	ENG. APP.	MATERIAL					
	UNLESS OTHERWISE SPECIFIED DIMENSIONS ARE IN INCHES AND INCLUDE CHEMICALLY APPLIED OR PLATED FINISHES	SCALE	2:1					5052-H32		<i>R. Kohn</i>	<i>11/4/63</i>	<i>BP</i>
							TYPE & TEMPER	HEAT TREAT. SPEC.	DRAWN	CHECKED	FINAL APPROVAL	
							S404-YELLOW IRIDITE		R. KOHN 11/4/63	R. KOHN 11-4-63	MS-3561	
							FINISH & SPEC. NO.		ELEC. DES. APP.	MECH. DES. APP.		

DECIMALS  
.X ± .05  
.XX ± .01  
.XXX ± .005

FRACTIONS  
± 1/64  
ANGLES  
± 0° 30'

TOLERANCES

CODE  
A

THE CONTENTS OF THIS DRAWING ARE THE EXCLUSIVE PROPERTY OF THE TECHNICAL MATERIEL CORP. ITS UNAUTHORIZED USE FOR REPRODUCTION IN WHOLE OR IN PART IS STRICTLY FORBIDDEN.

REQ. PER UNIT

USED ON

MODEL

ASS'Y. NO.

DATE

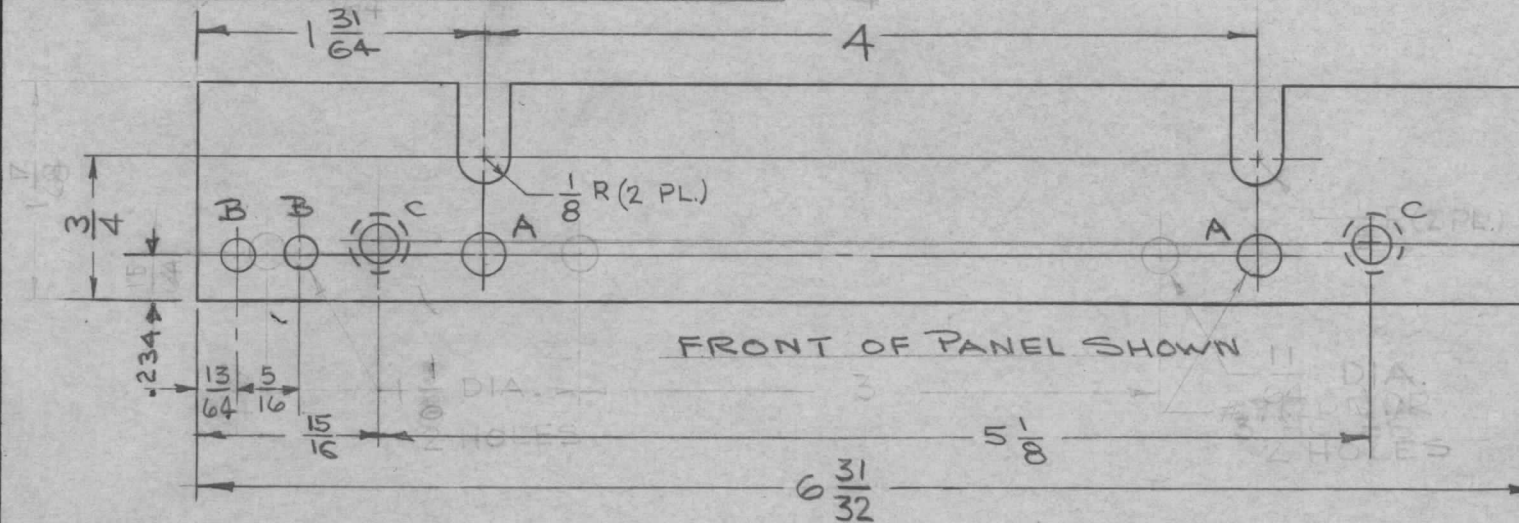
1

MNF-1

6-12-63

MS-3574

SYM	HOLE DESCRIPTION	REQ
A	.201 DIA	2
B	1/8 DIA	2
C	.196 DIA. CSK 82° TO .390 DIA.	2



NOTE: CSNK ON REAR OF PANEL

FINISH NOTE:

1. S404 - YEL. IRIDITE ALL OVER
2. S114 - ZINC CHROMATE PRIMER } ON FRONT
3. S115 - SMOOTH GRAY ENAMEL } & EDGES ONLY

MS-3574

METAL STAMP TMC PART NO. 1/8 HIGH GOTHIC.

REMOVE ALL BURRS AND SHARP EDGES.

SYM	DESCRIPTION	DATE	CH. NO.	DRAFTS	CHECKER	ENG. APP.	REQ. ITEM	PART NO.	AALTONEN	DESCRIPTION	SYMBOL
							3/16 THK			THE TECHNICAL MATERIEL CORP.	
							STOCK SIZE			MAMARONECK.	
							ALUMINUM			NEW YORK	
										PANEL, FRONT END	
										RIGHT HAND	
							2024-T3		T. RAMIREZ	12/21/63	RWC 2/21/64
							TYPE & TEMPER	HEAT TREAT. SPEC.	DRAWN	CHECKED	FINAL APPROVAL
							SEE NOTE				MS-3574
							FINISH & SPEC. NO.		ELEC. DES. APP.	MECH. DES. APP.	

THE CONTENTS OF THIS DRAWING ARE THE EXCLUSIVE PROPERTY OF THE TECHNICAL MATERIEL CORP. ITS UNAUTHORIZED USE FOR REPRODUCTION IN WHOLE OR IN PART IS STRICTLY FORBIDDEN.

REQ. PER UNIT

USED ON

MODEL

ASS'Y. NO.

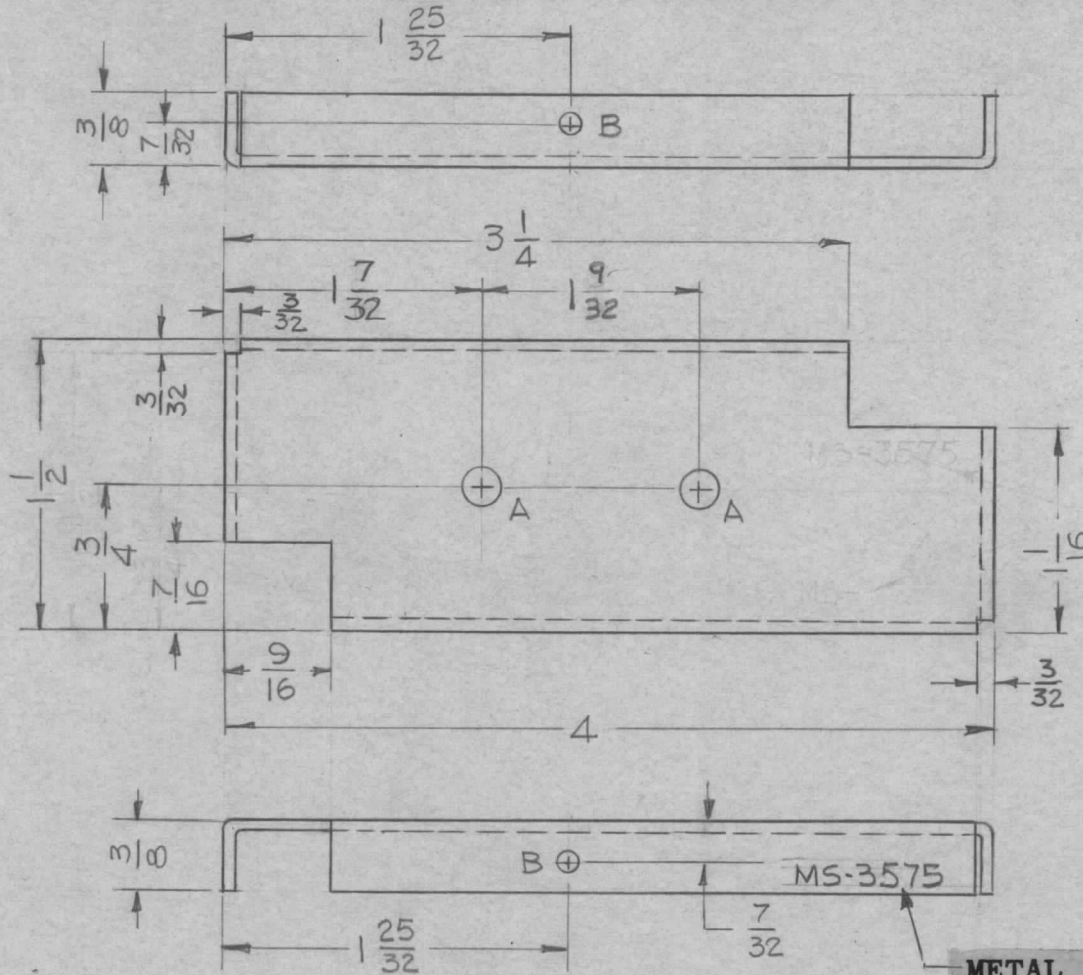
DATE

MS-3575

1

MNF-1

6-29-63



HOLE	DESCRIPTION	REQ'D
A	3/16 DIA.	2
B	3/32 DIA.	2

METAL STAMP TMC PART NO. 1/8 HIGH, GOTHIC

- UNLESS OTHERWISE SPECIFIED:
1. USE MATERIAL THICKNESS FOR MAXIMUM RADIUS ON ALL BENDS.
  2. ALL ANGULAR BENDS 90°.
  3. REMOVE ALL BURRS AND SHARP EDGES.

METAL STAMP TMC PART NO. 1/8 HIGH, GOTHIC.

SYM	DESCRIPTION	DATE	CH. NO.	DRAFTS	CHECKER	ENG. APP.	REQ. ITEM	PART NO.	AALTONEN DESCRIPTION	SYMBOL	
							1/16 THK		THE TECHNICAL MATERIEL CORP. MAMARONECK, NEW YORK		
							STOCK SIZE				
							ALUMINUM		BRACKET, ELECTRICAL SHIELD		
							MATERIAL		FILTER		
							5052-H32	-H-	G.D.L. @ 1-7-64	2/21/64	
							TYPE & TEMPER	HEAT TREAT. SPEC.	DRAWN	CHECKED	FINAL APPROVAL
							5404 IRIDITE (YELLOW)				MS-3575
							FINISH & SPEC. NO.		ELEC. DES. APP.	MECH. DES. APP.	

UNLESS OTHERWISE SPECIFIED DIMENSIONS ARE IN INCHES AND INCLUDE CHEMICALLY APPLIED OR PLATED FINISHES

SCALE 1:1

DECIMALS .X ± .05 .XX ± .01 .XXX ± .005 TOLERANCES FRACTIONS ± 1/64 ANGLES ± 0° 30'

CODE A

THE CONTENTS OF THIS DRAWING ARE THE EXCLUSIVE PROPERTY OF THE TECHNICAL MATERIEL CORP. ITS UNAUTHORIZED USE FOR REPRODUCTION IN WHOLE OR IN PART IS STRICTLY FORBIDDEN.

REQ. PER UNIT

USED ON

MODEL

ASS'Y. NO.

DATE

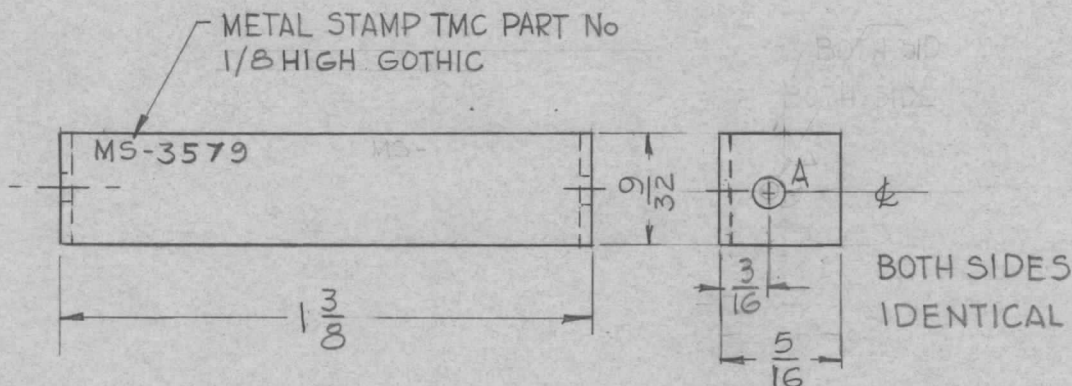
1

MNF-1

6-29-63

MS-3579

HOLE	DESCRIPTION	REQ'D
A	3/32 DIA.	2



UNLESS OTHERWISE SPECIFIED:

1. USE MATERIAL THICKNESS FOR MAXIMUM RADIUS ON ALL BENDS.
2. ALL ANGULAR BENDS 90°.
3. REMOVE ALL BURRS AND SHARP EDGES.

SYM	DESCRIPTION	DATE	CH. NO.	DRAFTS	CHECKER	ENG. APP.	REQ. ITEM	PART NO.	AALTONEN DESCRIPTION	SYMBOL
							1/16 THK.		THE TECHNICAL MATERIEL CORP. MAMARONECK, NEW YORK	
							STOCK SIZE		BRACKET, ELECTRICAL SHIELD	
							ALUMINUM		DIVIDER	
							MATERIAL			
							5052-H32	—H—	G.D.L	@ 1-7-64
							TYPE & TEMPER	HEAT TREAT. SPEC.	DRAWN	CHECKED
							S404 IRIDITE (YELLOW)		<i>TJA</i>	<i>M. Zelona</i>
							FINISH & SPEC. NO.	ELEC. DES. APP.	MECH. DES. APP.	MS-3579

UNLESS OTHERWISE SPECIFIED DIMENSIONS ARE IN INCHES AND INCLUDE CHEMICALLY APPLIED OR PLATED FINISHES

SCALE 2:1

DECIMALS  
.X ± .05  
.XX ± .01  
.XXX ± .005

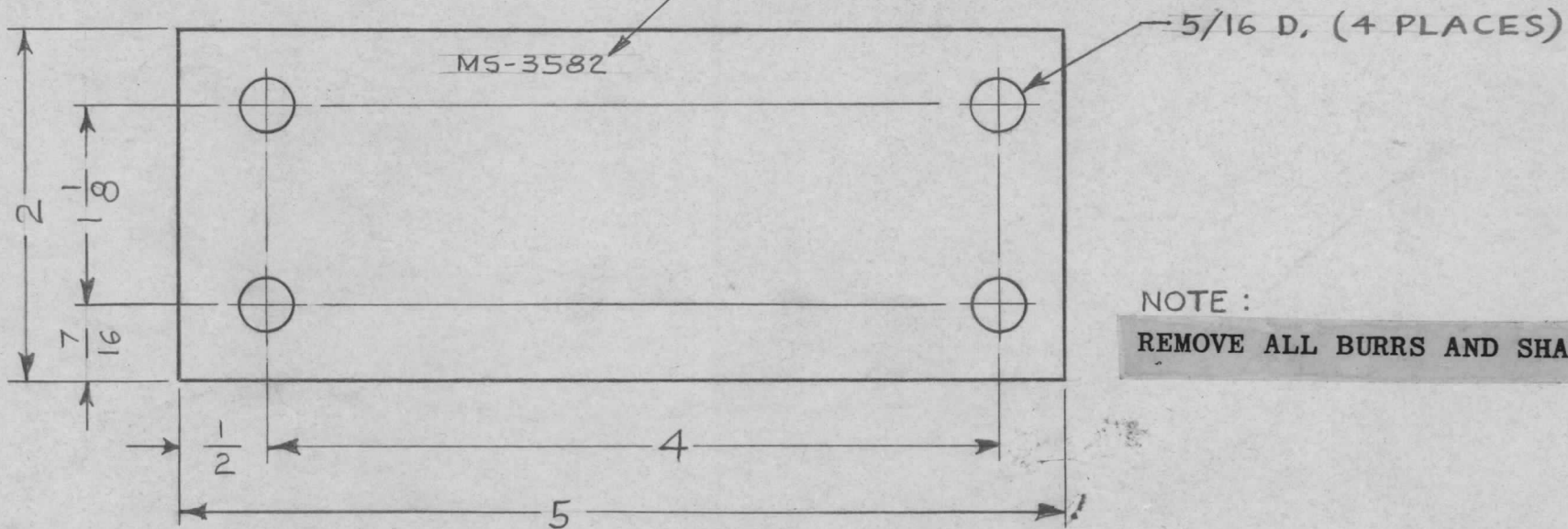
FRACTIONS  
± 1/64  
ANGLES  
± 0° 30'

TOLERANCES

CODE  
A

REQ. PER UNIT	USED ON		MS-3582
	MODEL	ASS'Y. NO.	
2	MNF-1		10-24-63

METAL STAMP TMC PART NO.  
1/8 HIGH GOTHIC.



NOTE :  
REMOVE ALL BURRS AND SHARP EDGES.

REQ.	ITEM	PART NO.	AALTONEN DESCRIPTION				SYMBOL	
		1/8 THICK	THE TECHNICAL MATERIEL CORP.					
		STOCK SIZE	MAMARONECK. NEW YORK					
		ALUMINUM	SPACER					
			PLATE, SLIDE					
SYM	DESCRIPTION	DATE	CH. NO.	DRAFTS	CHECKER	ENG. APP.		
UNLESS OTHERWISE SPECIFIED DIMENSIONS ARE IN INCHES AND INCLUDE CHEMICALLY APPLIED OR PLATED FINISHES		SCALE	1:1					
		5052-H32	-H-	NPeters	@1-7-64	RJC	2/21/64	
		TYPE & TEMPER	HEAT TREAT. SPEC.	DRAWN	CHECKED	FINAL APPROVAL		
		5404 IRIDITE 14		TPL	In 3/2/64	MS-3582		
		FINISH & SPEC. NO.	ELEC. DES. APP.	MECH. DES. APP.				

DECIMALS	FRACTIONS	CODE
.X ± .05	± 1/64	A
.XX ± .01	ANGLES	
.XXX ± .005	± 0° 30'	

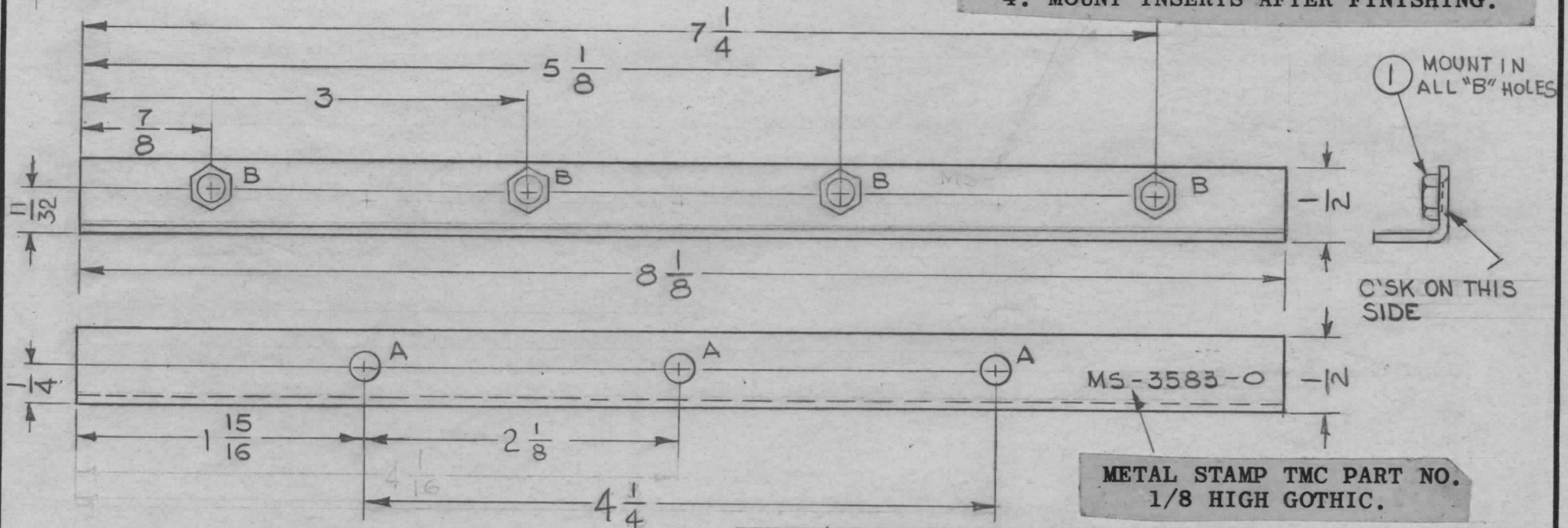
HOLE	DESCRIPTION	REQ
A	11/64 DIA	3
B	.213 DIA C'SK 90° TO .265 DIA.	4

REQ. PER UNIT	USED ON		
	MODEL	ASS'Y. NO.	DATE
2	MSA-1		10-22-63

MS-3583 ○

UNLESS OTHERWISE SPECIFIED:

1. USE MATERIAL THICKNESS FOR MAXIMUM RADIUS ON ALL BENDS.
2. ALL ANGULAR BENDS 90°.
3. REMOVE ALL BURRS AND SHARP EDGES.
4. MOUNT INSERTS AFTER FINISHING.

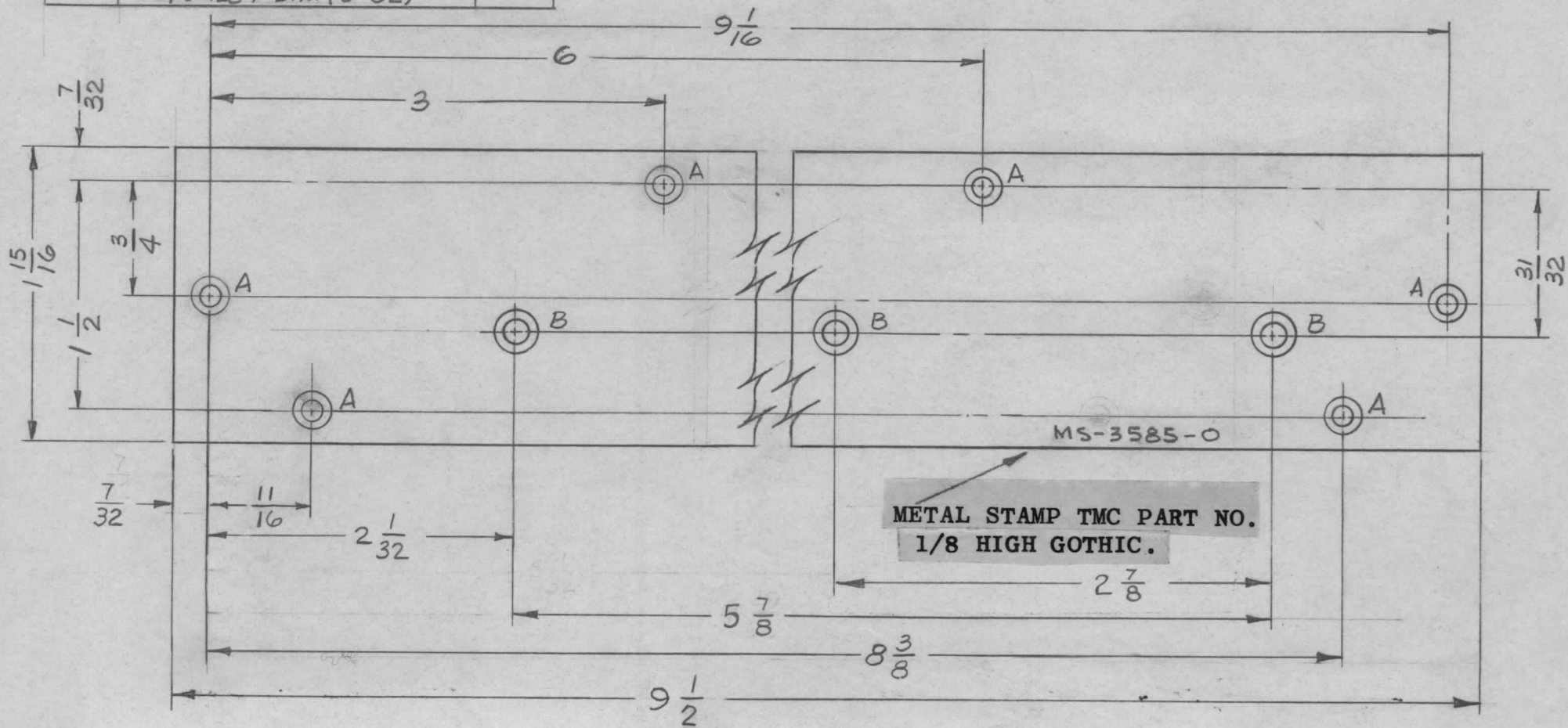


4	1	SM-107-23	HEX, INSERT	B		
REQ.	ITEM	PART NO.	DESCRIPTION	SYMBOL		
		064 TH'K	THE TECHNICAL MATERIEL CORP. MAMARONECK, NEW YORK			
		ALUMINUM	BRACKET, MOUNTING, MODULE			
			AUDIO AMPLIFIER			
0	ORIGINAL RELEASE FOR PRODUCTION	4-17-64	0	A.M. @		
X1	ITEM(1) WAS NT-129-0632-4	1-14-64		G.W.L. @ TRL		
SYM	DESCRIPTION	DATE	CH. NO.	DRAFTS	CHECKER	ENG. APP.
UNLESS OTHERWISE SPECIFIED DIMENSIONS ARE IN INCHES AND INCLUDE CHEMICALLY APPLIED OR PLATED FINISHES		SCALE	1:1			
DECIMALS .X ± .05 .XX ± .01 .XXX ± .005	TOLERANCES	FRACTIONS ± 1/64 ANGLES ± 0° 30'	CODE	A		
5052-H32		HEAT TREAT. SPEC.	—#—	DRAWN	G.D.L.	CHECKED
S404 IRIDITE 14-2 AL COAT		FINISH & SPEC. NO.		MS-3583	MS-3583	MS-3583
ELEC. DES. APP.		MECH. DES. APP.		MS-3583 ○		

HOLE	DESCRIPTION	REQ'D
A	.120 DIA., C'SINK 82° TO .230 DIA. (4-32)	6
B	.144 DIA., C'SINK 82° TO .284 DIA. (6-32)	3

REQ. PER UNIT	USED ON		
	MODEL	ASS'Y. NO.	DATE
4	MSA-1		10-31-63

MS-3585 ○



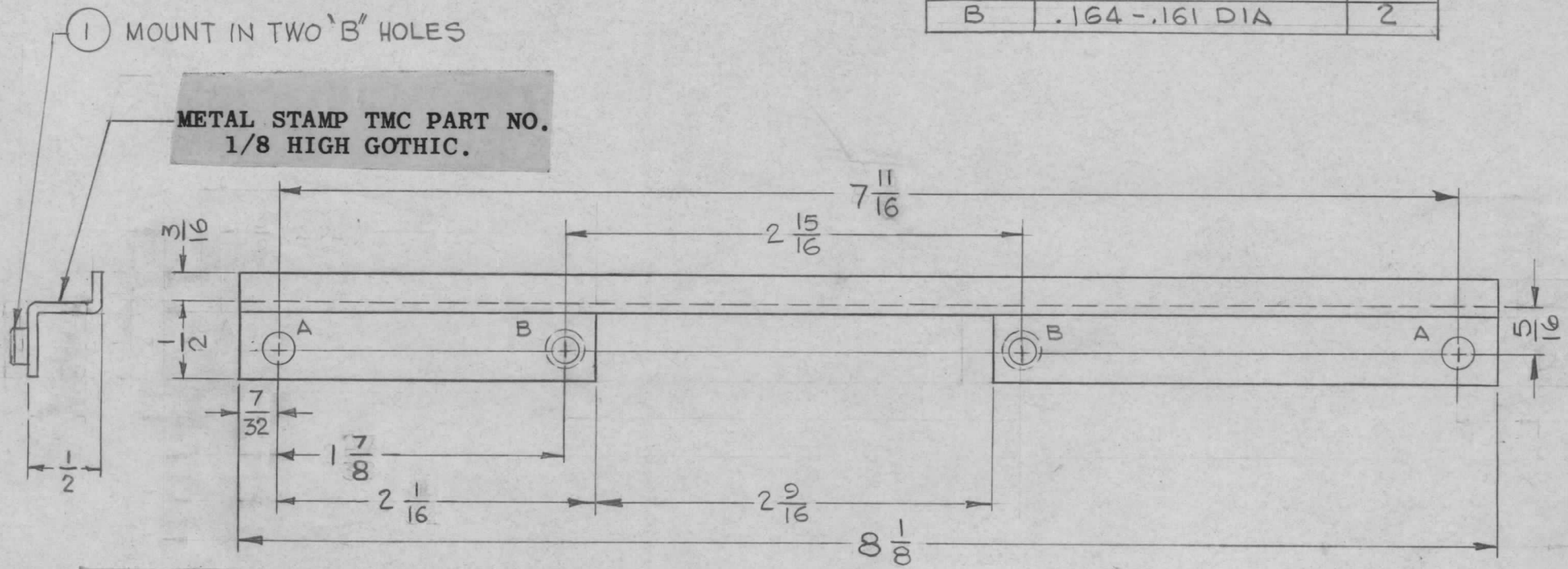
REF: LD-1438

REQ. ITEM	PART NO.	AALTONEN	DESCRIPTION	SYMBOL
	.064 THK		THE TECHNICAL MATERIEL CORP.	
	STOCK SIZE		MAMARONECK, NEW YORK	
0	ORIGINAL RELEASE FOR PRODUCTION	4-17-64	AM @	
XI	3 WAS 3 1/16, 6 WAS 6 1/16 FROM LEFT.	12/30/63	TR	
SYM	DESCRIPTION	DATE	CH. NO.	DRAFTS
				CHECKER
				ENG. APP.
UNLESS OTHERWISE SPECIFIED DIMENSIONS ARE IN INCHES AND INCLUDE CHEMICALLY APPLIED OR PLATED FINISHES		SCALE		
		1:1		
DECIMALS	FRACTIONS	CODE		
.X ± .05	± 1/64	A		
.XX ± .01	ANGLES			
.XXX ± .005	± 0° 30'			
TOLERANCES				
5052H32		T. RAMIREZ @ 3-12-64		
TYPE & TEMPER	HEAT TREAT. SPEC.	DRAWN	CHECKED	FINAL APPROVAL
5404 YEL. IRIDITE		TRK	TRK	MS-3585 ○
FINISH & SPEC. NO.		ELEC. DES. APP.	MECH. DES. APP.	



REQ. PER UNIT	USED ON			MS-3586 0
	MODEL	ASS'Y. NO.	DATE	
4	MSA-1	A-3398	8-29-63	

HOLE	DESCRIPTION	REQ
A	11/64 DIA.	2
B	.164-.161 DIA	2

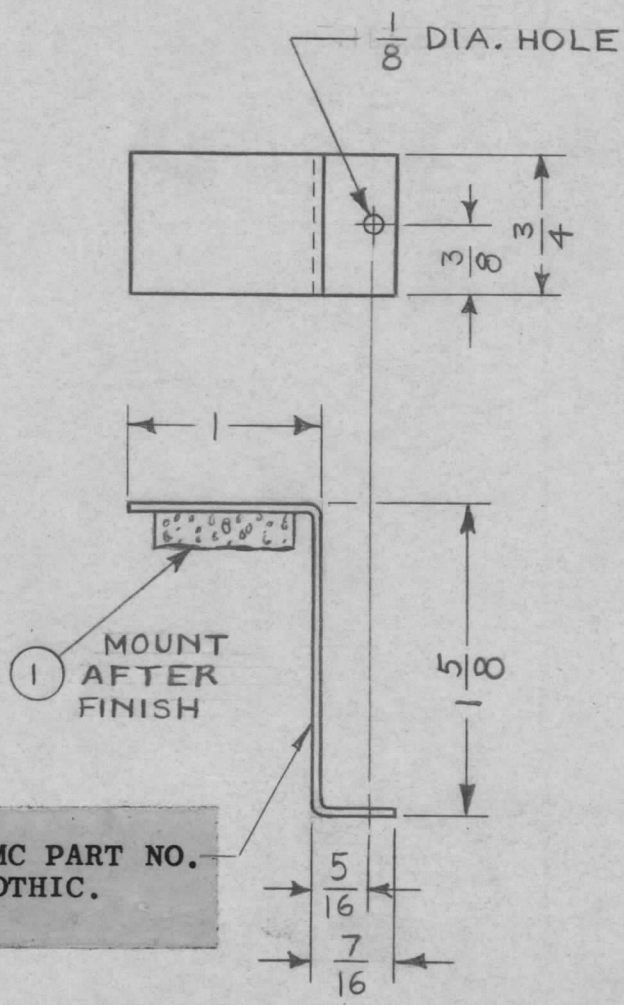


- UNLESS OTHERWISE SPECIFIED:**
1. USE MATERIAL THICKNESS FOR MAXIMUM RADIUS ON ALL BENDS.
  2. ALL ANGULAR BENDS 90°
  3. REMOVE ALL BURRS AND SHARP EDGES.
  4. MOUNT INSERTS AFTER FINISHING.

2	1	NT-129-440-4	NUT, ROUND, SWAGE TYPE	B				
REQ. ITEM	PART NO.		AALTONEN DESCRIPTION	SYMBOL				
	.064 THK		THE TECHNICAL MATERIEL CORP.					
	STOCK SIZE		MAMARONECK, NEW YORK					
0	ORIGINAL RELEASE FOR PRODUCTION		BRACKET, SINGLE CONNECTOR					
XI	B 1/2 WAS 9.12							
	REMOVED (2) "A" HOLES							
SYM	DESCRIPTION	DATE	CH. NO.	DRAFTS	CHECKER	ENG. APP.		
	UNLESS OTHERWISE SPECIFIED DIMENSIONS ARE IN INCHES AND INCLUDE CHEMICALLY APPLIED OR PLATED FINISHES	SCALE	1:1					
	DECIMALS	FRACTIONS	CODE					
	.X ± .05	± 1/64	A					
	.XX ± .01	ANGLES						
	.XXX ± .005	± 0° 30'						
	TOLERANCES							
				5052-H32	—H—	G.D.L	@ 3-11-64	RJC
				TYPE & TEMPER	HEAT TREAT. SPEC.	DRAWN	CHECKED	FINAL APPROVAL
				S404-YEL IRIDITE		JRL		MS-3586 0
				FINISH & SPEC. NO.		ELEC. DES. APP.	MECH. DES. APP.	



REQ. PER UNIT	USED ON			MS-3588	○
	MODEL	ASS'Y. NO.	DATE		
2	MCG-1		11-20-63		



UNLESS OTHERWISE SPECIFIED:

1. USE MATERIAL THICKNESS FOR MAXIMUM RADIUS ON ALL BENDS.
2. ALL ANGULAR BENDS 90°.
3. REMOVE ALL BURRS AND SHARP EDGES.

METAL STAMP TMC PART NO. 1/8 HIGH GOTHIC.

1	1	TA-III-2-6-75-A	TAPE, URETHANE			
REQ. ITEM	PART NO.		AALTONEN DESCRIPTION			SYMBOL
	.062 THICK		THE TECHNICAL MATERIEL CORP.			
	STOCK SIZE		MAMARONECK, NEW YORK			
0	ORIGINAL RELEASE FOR PRODUCTION		BRACKET, OVEN			
SYM	DESCRIPTION	DATE	CH. NO.	DRAFTS	CHECKER	ENG. APP.
		4/13/64	#	AM	@	
UNLESS OTHERWISE SPECIFIED DIMENSIONS ARE IN INCHES AND INCLUDE CHEMICALLY APPLIED OR PLATED FINISHES		SCALE	1:1			
DECIMALS	FRACTIONS	CODE	5052-H32			
.X ± .05	± 1/64	A	TYPE & TEMPER		HEAT TREAT. SPEC.	DRAWN
.XX ± .01	ANGLES		YEL IRIDITE 14-2			CHECKED
.XXX ± .005	± 0° 30'		AL COAT			FINAL APPROVAL
			FINISH & SPEC. NO.		ELEC. DES. APP.	MECH. DES. APP.
						MS-3588 ○