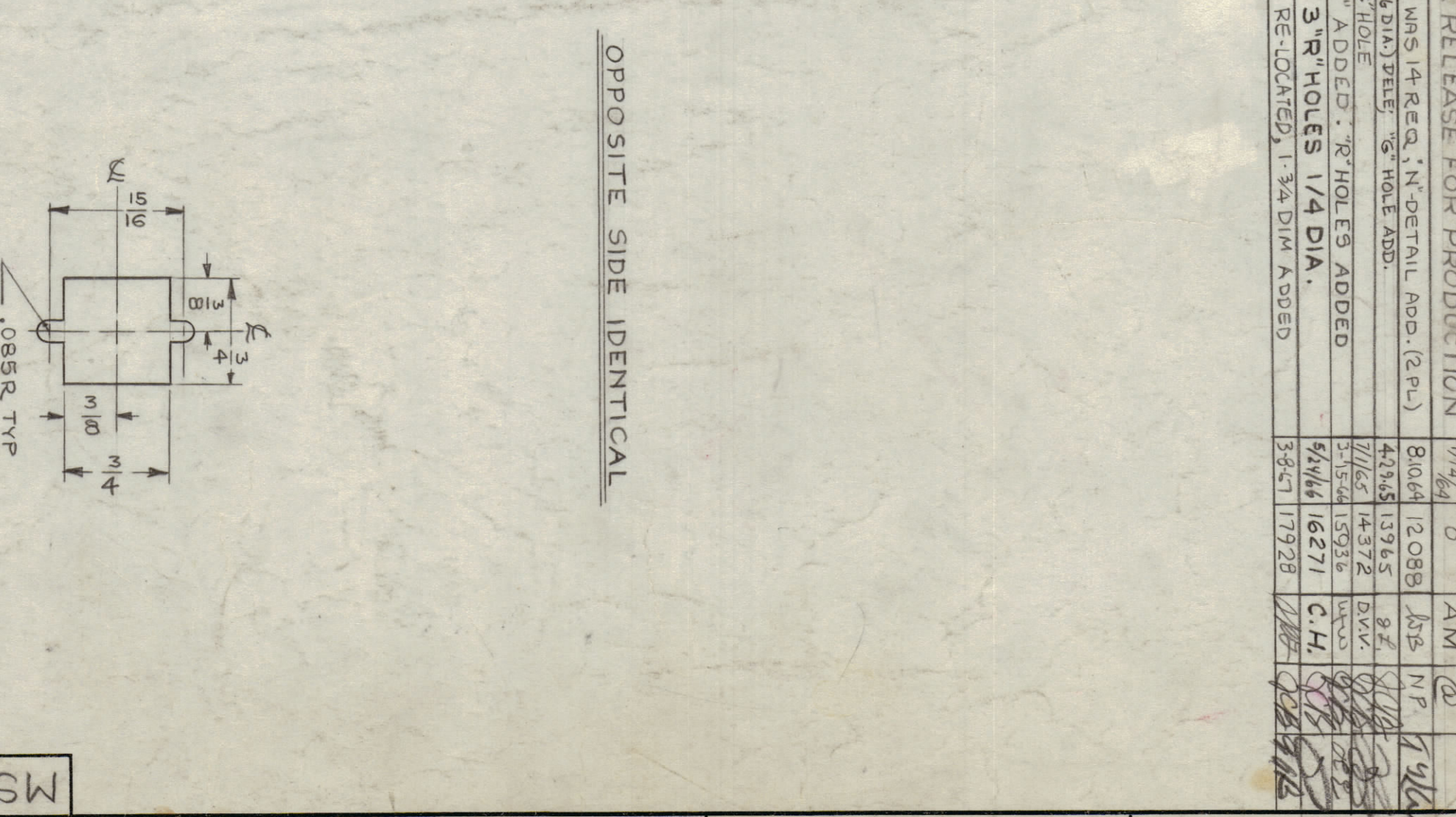
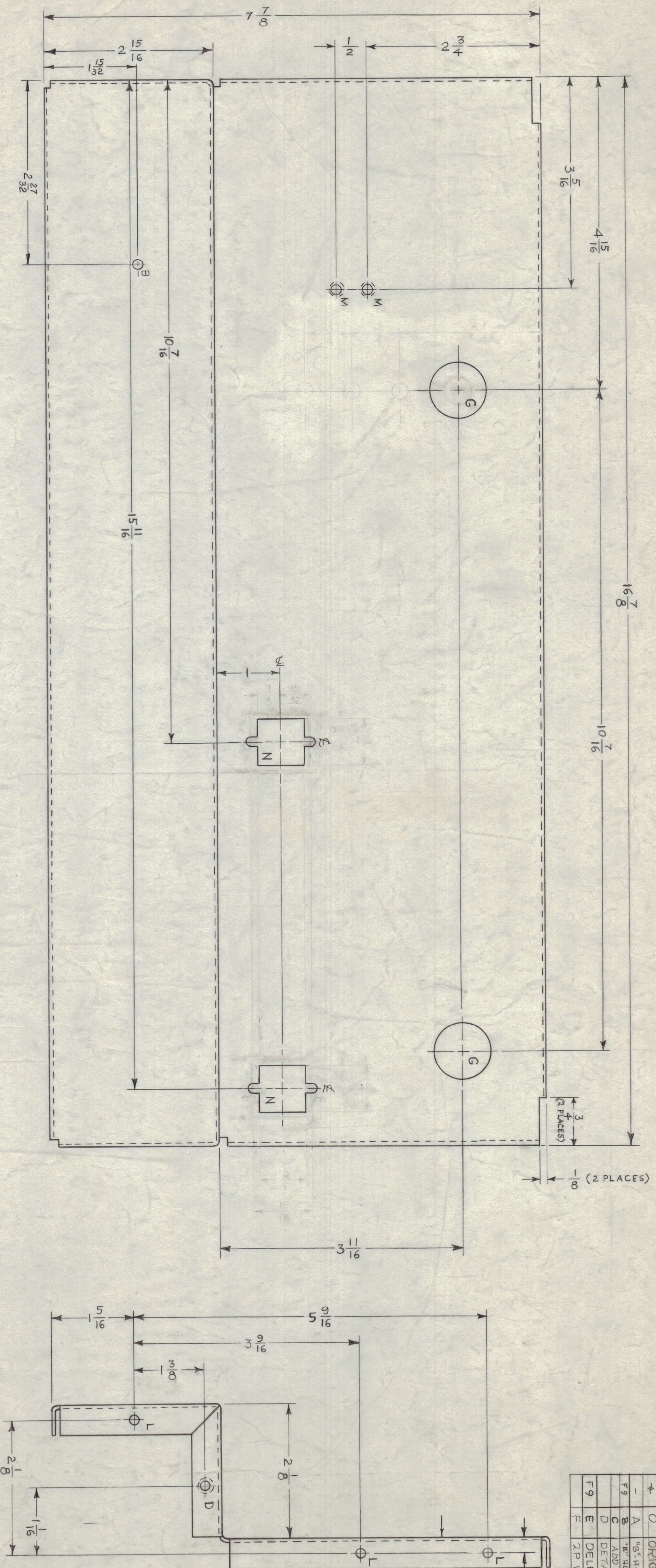
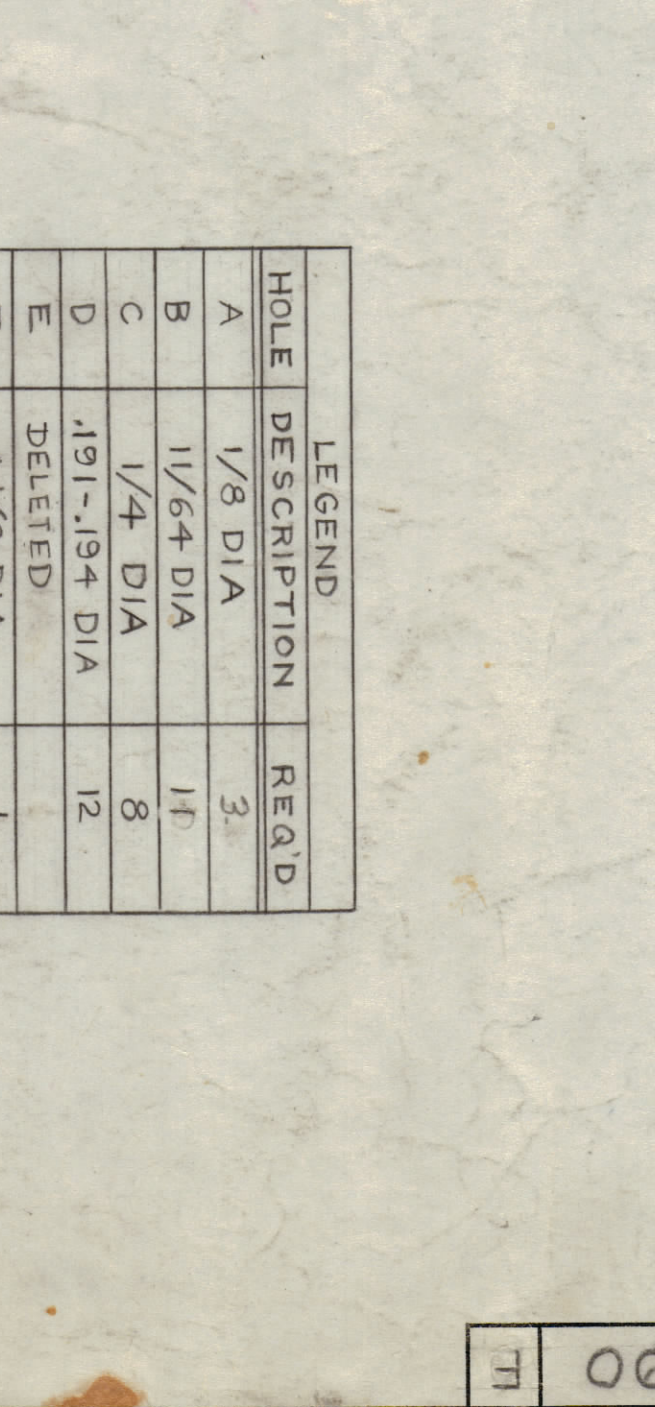
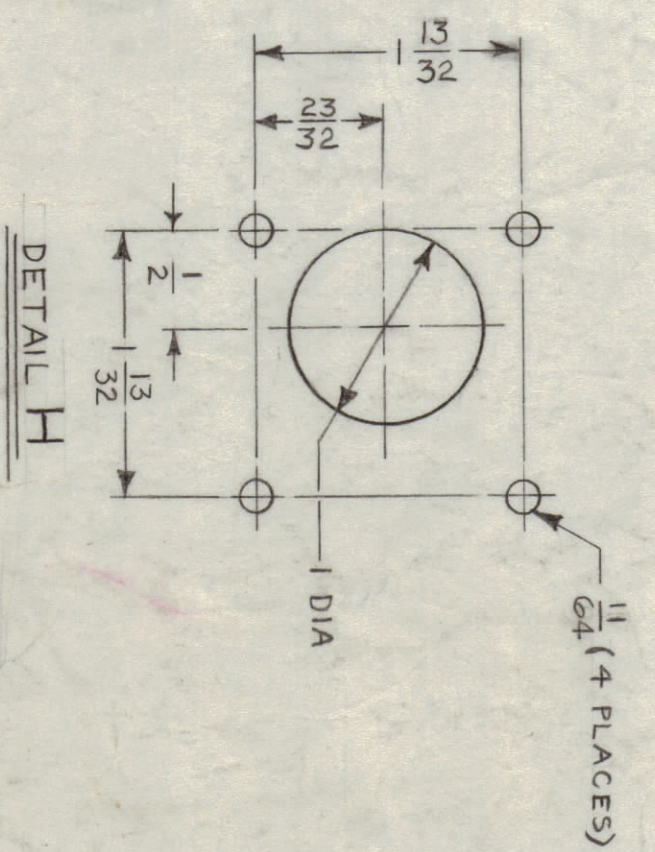
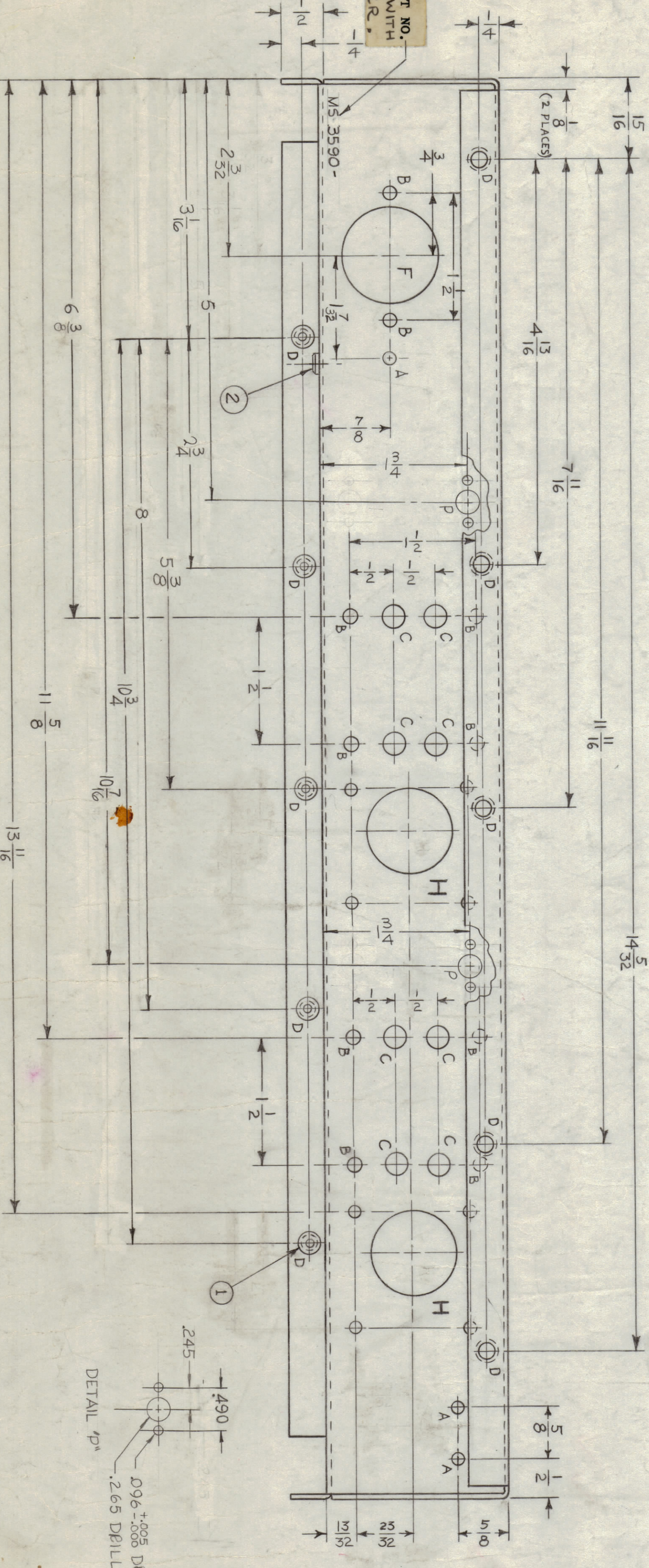


ZONE	S/N	DESCRIPTION	DATE	E.M.N. NO.	DRAWN	CHECKED	APPROV.
3	X1	DIMENSION 2 15/16 IN ZONE D1E-10 WAS MISSING (3-14)	7/14/44	X1	AM	AM	1/1/44
4	O	ORIGINAL RELEASE FOR PRODUCTION	8/6/44	12081	AM	AM	1/1/44
5	A	1/8" HOLES MIS 14 REQ. IN DETAIL (2 PL.)	8/6/44	12081	AM	AM	1/1/44
6	B	"E" HOLE (7/16 DIA) DELETED	4/13/45	13765	AM	AM	1/1/44
7	C	ADD 1/2" R HOLE	11/15/47	14372	AM	AM	1/1/44
8	D	DETAIL "P" A DDED - 7R HOLE 3R ADDED	5/15/44	15936	AM	AM	1/1/44
9	E	DELETED 3 "R" HOLES 1/4 DIA.	6/14/44	16271	AM	AM	1/1/44
10	F	2 P HOLES RE-LOCATED, 1-3/8 DIA AS SHD	3/24/47	17928	AM	AM	1/1/44



METAL STAMP TMC PART NO. 1/8 HIGH GOTHIC, WITH LATEST REV. LETTER, F.



UNLESS OTHERWISE SPECIFIED:
 1. USE MATERIAL THICKNESS FOR MAXIMUM RADIIUS ON ALL BENDS.
 2. ALL ANGULAR BENDS 90°.
 3. REMOVE ALL BIRNS AND SHARP EDGES.
 4. MOUNT INSERTS AFTER FINISHING.

HOLE	DESCRIPTION	REQ'D
A	1/8 DIA	3
B	1/16 DIA	11
C	1/4 DIA	8
D	1/16-1/32 DIA	12
E	DELETED	
F	1/8 DIA	1
G	7/8 DIA	2
H	DETAIL	2
L	5/32 DIA	6
M	.161-.164 DIA	2
N	SEE DETAIL	2
P	SEE DETAIL	2

REF	LD-1414	NT-1129-440-4	NUT, ROUND, SWAGE TYPE	M
2	2	NT-1129-632-4	NUT, ROUND, SWAGE TYPE <td>D</td>	D
12	1			M

LIST OF MATERIAL

MATERIAL	DESCRIPTION	SYMBOL
ALTONEN		
MATERIAL .064 ALUMINUM		
5052-H32		

THE TECHNICAL MATERIAL CORP.
 CHASSIS, ELECTRICAL, REAR
 MAMARONECK, NEW YORK

SCALE	1:1	MCG-1	ASST. NO.
SCALE	1:1 <td>MCG-1 <td>ASST. NO.</td> </td>	MCG-1 <td>ASST. NO.</td>	ASST. NO.
SCALE	1:1 <td>MCG-1 <td>ASST. NO.</td> </td>	MCG-1 <td>ASST. NO.</td>	ASST. NO.

NOTES

1. UNLESS OTHERWISE SPECIFIED DIMENSIONS ARE IN INCHES AND INCLUDE DECIMALS. DIMENSIONS ARE TO BE TAKEN TO THE CENTERLINE UNLESS OTHERWISE SPECIFIED.

2. UNLESS OTHERWISE SPECIFIED DIMENSIONS ARE IN INCHES AND INCLUDE DECIMALS. DIMENSIONS ARE TO BE TAKEN TO THE CENTERLINE UNLESS OTHERWISE SPECIFIED.

3. UNLESS OTHERWISE SPECIFIED DIMENSIONS ARE IN INCHES AND INCLUDE DECIMALS. DIMENSIONS ARE TO BE TAKEN TO THE CENTERLINE UNLESS OTHERWISE SPECIFIED.

4. UNLESS OTHERWISE SPECIFIED DIMENSIONS ARE IN INCHES AND INCLUDE DECIMALS. DIMENSIONS ARE TO BE TAKEN TO THE CENTERLINE UNLESS OTHERWISE SPECIFIED.

5. UNLESS OTHERWISE SPECIFIED DIMENSIONS ARE IN INCHES AND INCLUDE DECIMALS. DIMENSIONS ARE TO BE TAKEN TO THE CENTERLINE UNLESS OTHERWISE SPECIFIED.

6. UNLESS OTHERWISE SPECIFIED DIMENSIONS ARE IN INCHES AND INCLUDE DECIMALS. DIMENSIONS ARE TO BE TAKEN TO THE CENTERLINE UNLESS OTHERWISE SPECIFIED.

7. UNLESS OTHERWISE SPECIFIED DIMENSIONS ARE IN INCHES AND INCLUDE DECIMALS. DIMENSIONS ARE TO BE TAKEN TO THE CENTERLINE UNLESS OTHERWISE SPECIFIED.

8. UNLESS OTHERWISE SPECIFIED DIMENSIONS ARE IN INCHES AND INCLUDE DECIMALS. DIMENSIONS ARE TO BE TAKEN TO THE CENTERLINE UNLESS OTHERWISE SPECIFIED.

9. UNLESS OTHERWISE SPECIFIED DIMENSIONS ARE IN INCHES AND INCLUDE DECIMALS. DIMENSIONS ARE TO BE TAKEN TO THE CENTERLINE UNLESS OTHERWISE SPECIFIED.

10. UNLESS OTHERWISE SPECIFIED DIMENSIONS ARE IN INCHES AND INCLUDE DECIMALS. DIMENSIONS ARE TO BE TAKEN TO THE CENTERLINE UNLESS OTHERWISE SPECIFIED.

11. UNLESS OTHERWISE SPECIFIED DIMENSIONS ARE IN INCHES AND INCLUDE DECIMALS. DIMENSIONS ARE TO BE TAKEN TO THE CENTERLINE UNLESS OTHERWISE SPECIFIED.

MS 3590 F