

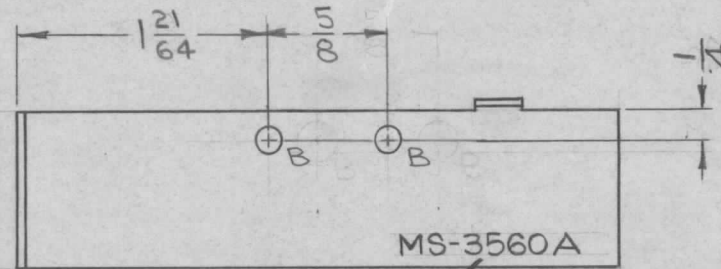
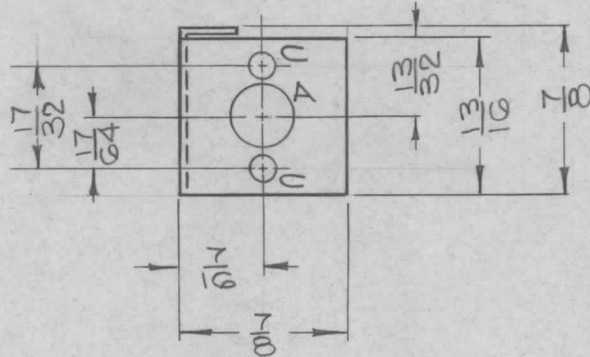
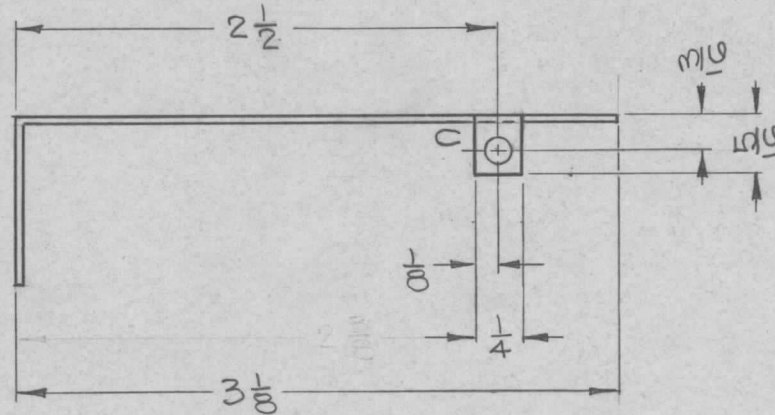
UNLESS OTHERWISE SPECIFIED:

1. USE MATERIAL THICKNESS FOR MAXIMUM RADIUS ON ALL BENDS.
2. ALL ANGULAR BENDS 90°.
3. REMOVE ALL BURRS AND SHARP EDGES.

| REQ. PER UNIT | USED ON      |            |          |
|---------------|--------------|------------|----------|
|               | MODEL        | ASS'Y. NO. | DATE     |
| 1             | TTRF-1,2,3,4 |            | 10-15-63 |

MS-3560 A

| HOLE |          | REQ |
|------|----------|-----|
| A    | 5/16 DIA | 1   |
| B    | 1/8 DIA  | 2   |
| C    | 1/8 DIA  | 3   |



METAL STAMP TMC PART NO. 1/8 HIGH GOTHIC.

| REQ. ITEM                                                                                             | PART NO.                  | DESCRIPTION                  | SYMBOL                           |
|-------------------------------------------------------------------------------------------------------|---------------------------|------------------------------|----------------------------------|
|                                                                                                       | .040                      | THE TECHNICAL MATERIEL CORP. |                                  |
|                                                                                                       | STOCK SIZE                | MAMARONECK, NEW YORK         |                                  |
|                                                                                                       | ALUMINUM                  | SHIELD, R.F., OUTPUT         |                                  |
|                                                                                                       | MATERIAL                  |                              |                                  |
| A                                                                                                     | CHG. DIM. FR. 5/32 TO 1/4 | 3-2364 11070 A.M. @ Chang    |                                  |
| SYM                                                                                                   | DESCRIPTION               | DATE                         | CH. NO. DRAFTS CHECKER ENG. APP. |
| UNLESS OTHERWISE SPECIFIED DIMENSIONS ARE IN INCHES AND INCLUDE CHEMICALLY APPLIED OR PLATED FINISHES |                           | SCALE                        |                                  |
|                                                                                                       |                           | 1:1                          |                                  |
| DECIMALS                                                                                              | FRACTIONS                 | CODE                         |                                  |
| .X ± .05                                                                                              | ± 1/64                    | A                            |                                  |
| .XX ± .01                                                                                             | ANGLES                    |                              |                                  |
| .XXX ± .005                                                                                           | ± 0° 30'                  |                              |                                  |
| TOLERANCES                                                                                            |                           |                              |                                  |
| 5052-H32                                                                                              |                           | 5052-H32                     |                                  |
| TYPE & TEMPER                                                                                         |                           | HEAT TREAT. SPEC.            |                                  |
| S404-YELLOW IRIDITE                                                                                   |                           |                              |                                  |
| FINISH & SPEC. NO.                                                                                    |                           | ELEC. DES. APP.              | MECH. DES. APP.                  |
|                                                                                                       |                           | RKohn 10-15-63               | WA PALMER 10/16/63               |
|                                                                                                       |                           |                              | BP                               |
|                                                                                                       |                           |                              | MS-3560 A                        |