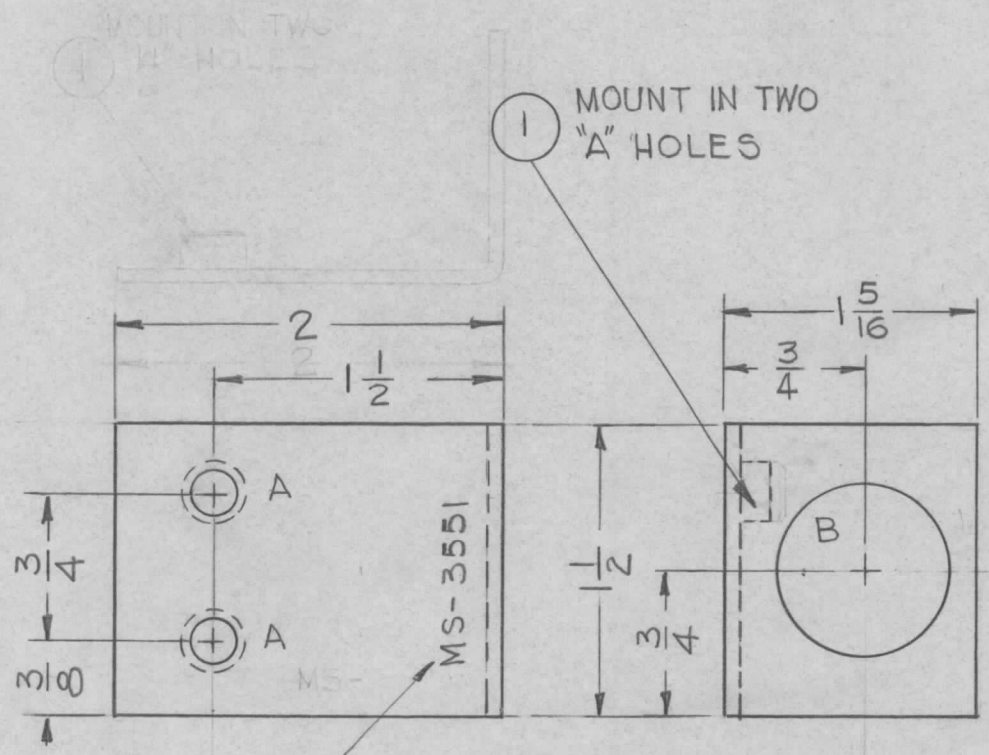


REQ. PER UNIT	USED ON		MS-3551	Ø
	MODEL	ASS'Y. NO.		
1	GPT-10K		11-12-63	



HOLE	DESCRIPTION	REQ.
A	.221 - .224 DIA.	2
B	7/8 DIA.	1

- UNLESS OTHERWISE SPECIFIED:**
1. USE MATERIAL THICKNESS FOR MAXIMUM RADIUS ON ALL BENDS.
 2. ANGULAR BEND 90°.
 3. REMOVE ALL BURRS AND SHARP EDGES.
 4. MOUNT INSERTS AFTER FINISHING.

METAL STAMP TMC PART NO.
1/8 HIGH GOTHIC.

						2	1	NT-129-832-4	NUT, ROUND, SWAGE TYPE	A		
						REQ. ITEM		PART NO.	0_POSE DESCRIPTION	SYMBOL		
								.081 THK	THE TECHNICAL MATERIEL CORP. MAMARONECK. NEW YORK			
								STOCK SIZE	BRACKET, MOUNTING			
Ø	ORIGINAL RELEASE	7/15/69						ALUMINUM	CONNECTOR CABLE			
SYM	DESCRIPTION	DATE	CH. NO.	DRAFTS	CHECKER	ENG. APP.		MATERIAL				
UNLESS OTHERWISE SPECIFIED DIMENSIONS ARE IN INCHES AND INCLUDE CHEMICALLY APPLIED OR PLATED FINISHES		SCALE						5052-H32	G.D.L.	7/15/69		
DECIMALS .X ± .05 .XX ± .01 .XXX ± .005		FRACTIONS ± 1/64 ANGLES ± 0° 30'		CODE A		1:1		TYPE & TEMPER	HEAT TREAT. SPEC.	DRAWN	CHECKED	FINAL APPROVAL
TOLERANCES								5404 IRIDITE 14-2 ALCOAT		AK	AN	MS-3551
								FINISH & SPEC. NO.	ELEC. DES. APP.	MECH. DES. APP.		Ø