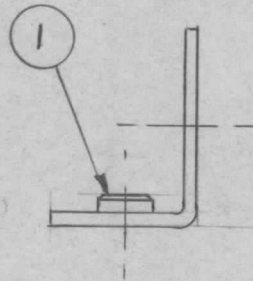
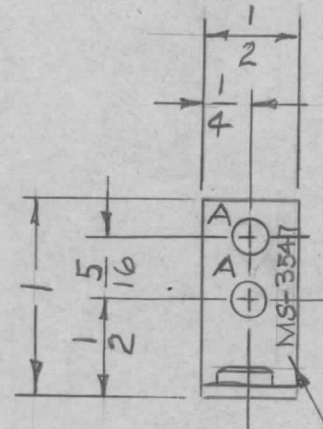
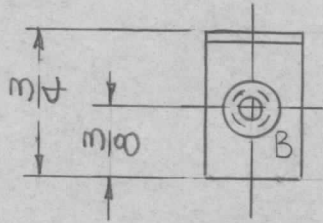


REQ. PER UNIT	USED ON			MS-3547 0
	MODEL	ASS'Y. NO.	DATE	
4	GPT 200K	AX444	5/23/64	
2	GPT 200K	AP 111	10-27-63	



**UNLESS OTHERWISE SPECIFIED:**

1. USE MATERIAL THICKNESS FOR MAXIMUM RADIUS ON ALL BENDS.
2. ALL ANGULAR BENDS 90°.
3. REMOVE ALL BURRS AND SHARP EDGES.
4. MOUNT INSERTS AFTER FINISHING.

**FINISH NOTES:**

1. S404 - IRIDITE 14-2 AL-COAT.
2. S114 - ZINC CHROMATE PRIMER
3. S520 - BLUE-GRAY TEXTURED VINYL PAINT (ALL OVER)

METAL STAMP TMC PART NO. 1/8 HIGH GOTHIC.

A ~ 11/64 DIA. 2 REQ.  
B ~ .191-.194 DIA. 1 REQ.

						1	1	NT129-632-4	NUT, ROUND, SWAGE TYPE	B	
						REQ. ITEM		PART NO.	DESCRIPTION	SYMBOL	
								.081 THICK	THE TECHNICAL MATERIEL CORP. MAMARONECK, NEW YORK	BRACKET, SUPPORT	
								STOCK SIZE			
								ALUMINUM			
0	ORIGINAL RELEASE FOR PRODUCTION	6/18/64		JSB				MATERIAL			
SYM	DESCRIPTION	DATE	CH. NO.	DRAFTS	CHECKER	ENG. APP.					
UNLESS OTHERWISE SPECIFIED DIMENSIONS ARE IN INCHES AND INCLUDE CHEMICALLY APPLIED OR PLATED FINISHES		SCALE	1 = 1					5052	H-32	A TURS I	RSB RAL
DECIMALS .X ± .05 .XX ± .01 .XXX ± .005	TOLERANCES	FRACTIONS ± 1/64 ANGLES ± 0° 30'	CODE				TYPE & TEMPER	HEAT TREAT. SPEC.	DRAWN	CHECKED	FINAL APPROVAL
							SEE NOTES		RSB	RAL	MS-3547 0
							FINISH & SPEC. NO.		ELEC. DES. APP.	MECH. DES. APP.	