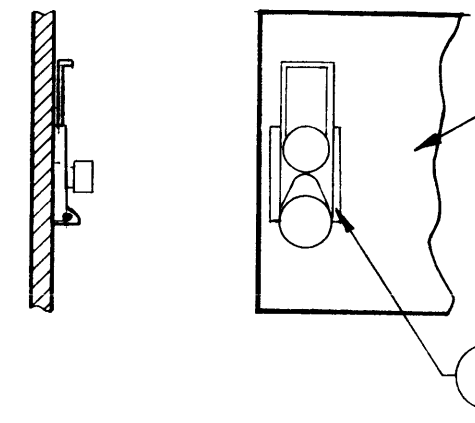
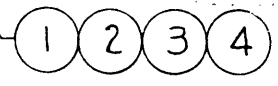


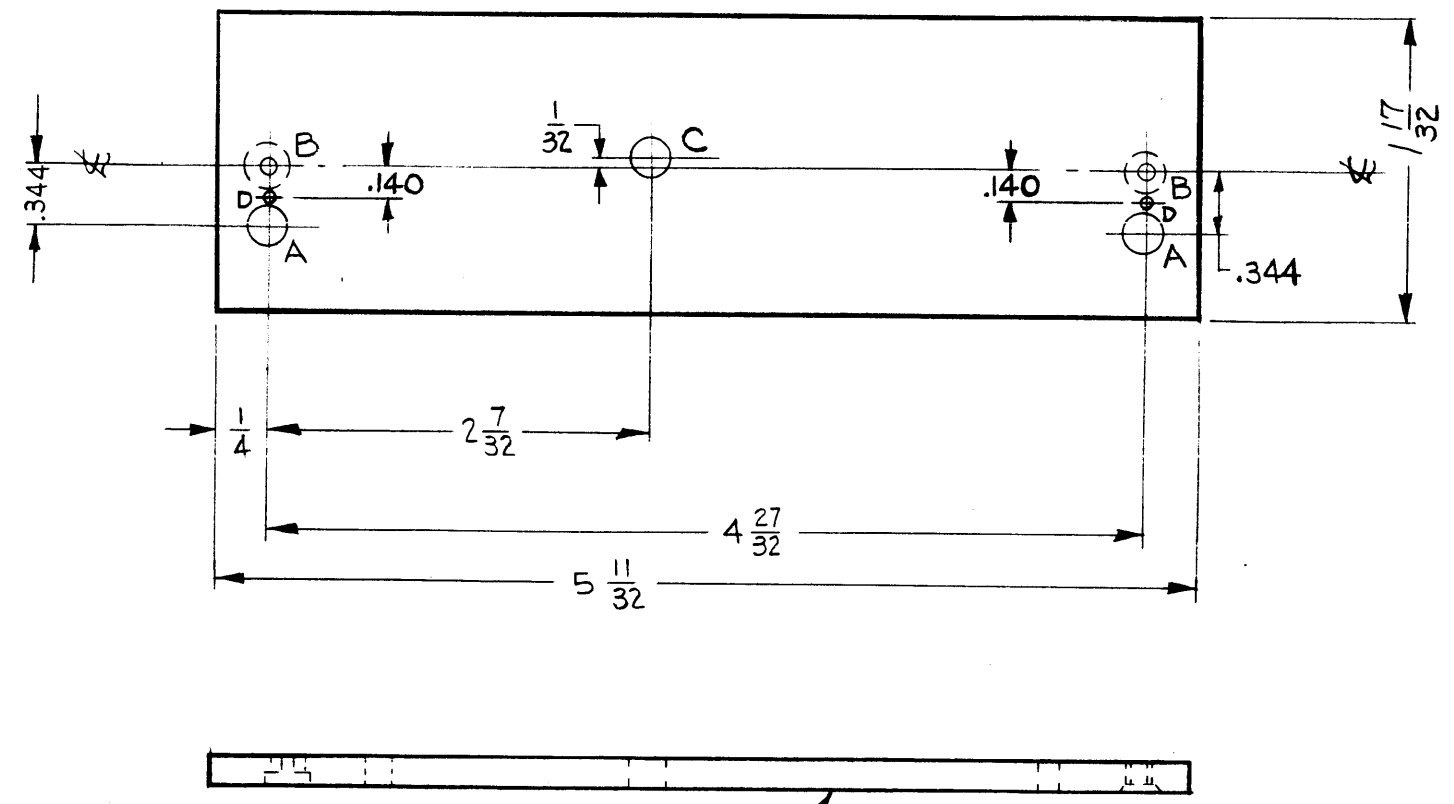
REVISIONS						
SYM	DESCRIPTION	DATE	E.M.N. NO.	DRAFT	CHKD	APPD
A	"D" HOLE ADD., IT. 1 WAS FS-119-1, "A" HOLE WAS .228 DIA	9.14.64	12334	BB	JL	TKA



MOUNT ITEMS 1 THRU 4 ON FRONT OF PANEL AS SHOWN USING "A", "B" AND "D" HOLES - AFTER FINISH.



FRONT OF PANEL SHOWN



HOLE LEGEND		
HOLE	DESCRIPTION	REQD
A	13/64 DIA.	2
B	.082 DIA. C'BORE 3/16 DIA X.039 DEEP - REAR SIDE -	2
C	3/16 DIA.	1
D	1/16 DIA	2

MACHINING:

1. MILL ALL EDGES.
2. HOLES MUST BE DRILLED, UNLESS OTHERWISE SPECIFIED.
3. LATERAL BOW OF PANEL MUST BE KEPT TO .031 TOLERANCE.
4. PANEL MUST BE FREE OF ALL MACHINING MARKS, GOUGES AND SCRATCHES. IF NECESSARY, SAND FRONT OF PANEL WITH NO. 120 GRIT SANDPAPER.

METAL STAMP TMC PART NO. 1/8 HIGH GOTHIC ON REAR OF PANEL

FINISH NOTES:

1. S404 - IRIDITE 14-2 AL-COAT.
2. S114 - ZINC CHROMATE PRIMER) FRONT AND
3. S115 - SMOOTH GRAY ENAMEL) EDGES ONLY

NOTES

1	AP-114	
Q'TY./UNIT	MODEL USED ON	ASS'Y. NO.
SCALE	CODE	
NONE	A	
THE CONTENTS OF THIS DRAWING ARE THE EXCLUSIVE PROPERTY OF THE TECHNICAL MATERIEL CORP. ITS UNAUTHORIZED USE OR REPRODUCTION IN WHOLE OR IN PART IS STRICTLY FORBIDDEN.		

REQ'D.	ITEM	PART NUMBER	DESCRIPTION	SYMBOL
2	4	FS-120-2	POST, SNAPSLIDE FASTENER	A-B
4	3	WA-131-22	WASHER, SPRING TENSION	A-B
2	2	FS-118-1	LATCH, SNAPSLIDE FASTENER	A-B
2	1	FS-119-2	LATCHGUIDE, SNAPSLIDE FASTENER	A-B

JORDAN LIST OF MATERIAL E 3037-

MATERIAL .081 THK ALUM. 2024-T3		THE TECHNICAL MATERIEL CORP. MAMARONECK, NEW YORK			
FINISH SEE FINISH NOTE		TITLE PANEL, FRONT, BLANK. X MTR			
UNLESS OTHERWISE SPECIFIED DIMENSIONS ARE IN INCHES AND INCLUDE CHEMICALLY APPLIED OR PLATED FINISHES		DRAWN <i>[Signature]</i>	DATE 8-28-63	FINAL APPROVAL <i>[Signature]</i>	DATE
DECIMALS .X ± .05 .XX ± .01 .XXX ± .005		CHECKED <i>[Signature]</i>	DATE 8-30-63	MS-3489	
FRACTIONS ± 1/64 ANGLES ± 0° 30'		ELECT. DES. RKOHN	DATE 1-16-64	A	
TOLERANCES		MECH. DES. W. JORDAN	DATE 1/10/64	SHEET	
				REV. LTR.	