

THE CONTENTS OF THIS DRAWING ARE THE EXCLUSIVE PROPERTY OF THE TECHNICAL MATERIEL CORP. ITS UNAUTHORIZED USE FOR REPRODUCTION IN WHOLE OR IN PART IS STRICTLY FORBIDDEN.

REQ. PER UNIT

USED ON

MODEL

ASS'Y. NO.

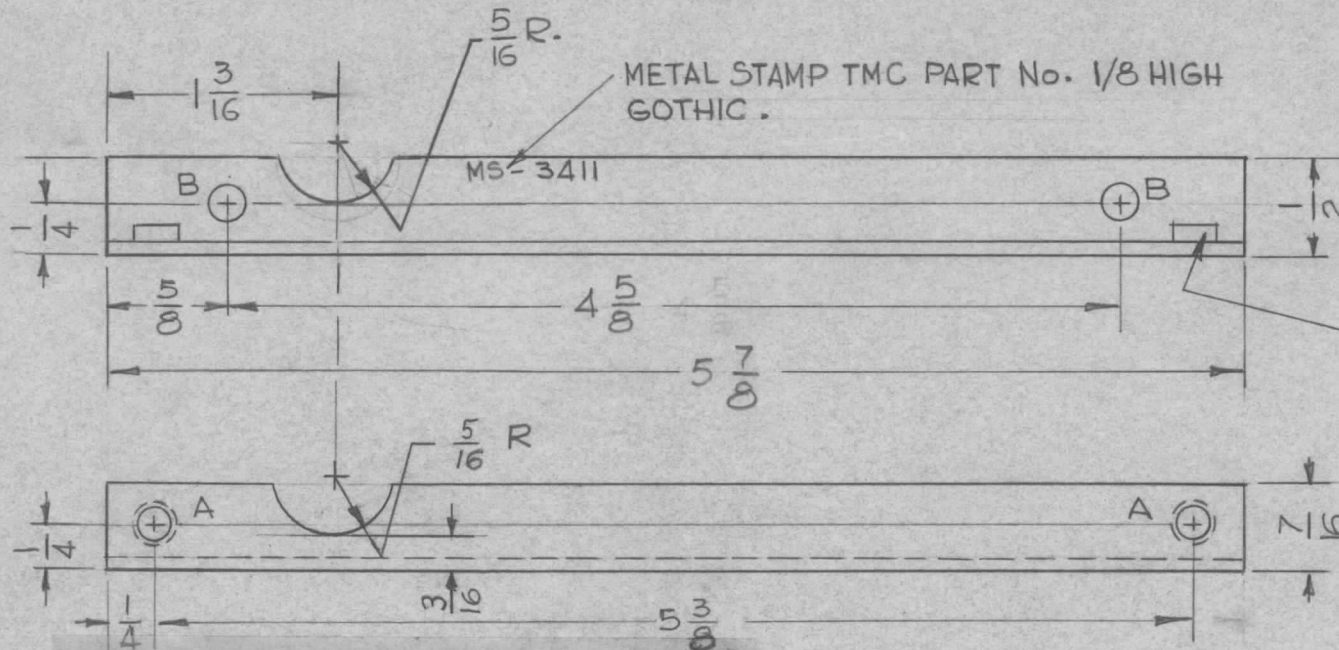
DATE

1

GPR-92

6-11-63

MS-3411 A



HOLE	DESCRIPTION	REQ.
A	.164 - .161 DIA.	2
B	11/64 DIA.	2

① MOUNT IN "A" HOLES AFTER FINISHING

UNLESS OTHERWISE SPECIFIED:

1. USE MATERIAL THICKNESS FOR MAXIMUM RADIUS ON ALL BENDS.
2. ALL ANGULAR BENDS 90°.
3. REMOVE ALL BURRS AND SHARP EDGES.
4. MOUNT INSERTS AFTER FINISHING.

2	1	NT-129-440-4	NUT, ROUND, SWAGE TYPE	A	
REQ. ITEM	PART NO.		STRUMER DESCRIPTION	SYMBOL	
1/16 THK.			THE TECHNICAL MATERIEL CORP.		
STOCK SIZE			MAMARONECK, NEW YORK		
A	RELOCATED CUTOUT IN TOP VIEW, 1 CUTOUT ADDED		BRACKET, SUPPORT, CASTING, BOTTOM COVER		
SYM	DESCRIPTION	DATE	CH. NO.	DRAFTS	
		5/14/64	11399	A.M.	
				@	
				MMK	
UNLESS OTHERWISE SPECIFIED DIMENSIONS ARE IN INCHES AND INCLUDE CHEMICALLY APPLIED OR PLATED FINISHES		SCALE	1:1		
DECIMALS	FRACTIONS	CODE	5052-H 32		
.X ± .05	± 1/64		G.D.L. HQ 7/8/63		
.XX ± .01	ANGLES		V.F.H. 7.8.63		
.XXX ± .005	± 0° 30'		TYPE & TEMPER HEAT TREAT. SPEC. DRAWN CHECKED FINAL APPROVAL		
TOLERANCES			S104 IRIDITE 14-2 AL-COAT		
			FINISH & SPEC. NO. ELEC. DES. APP. MECH. DES. APP.		
			MS-3411 A		