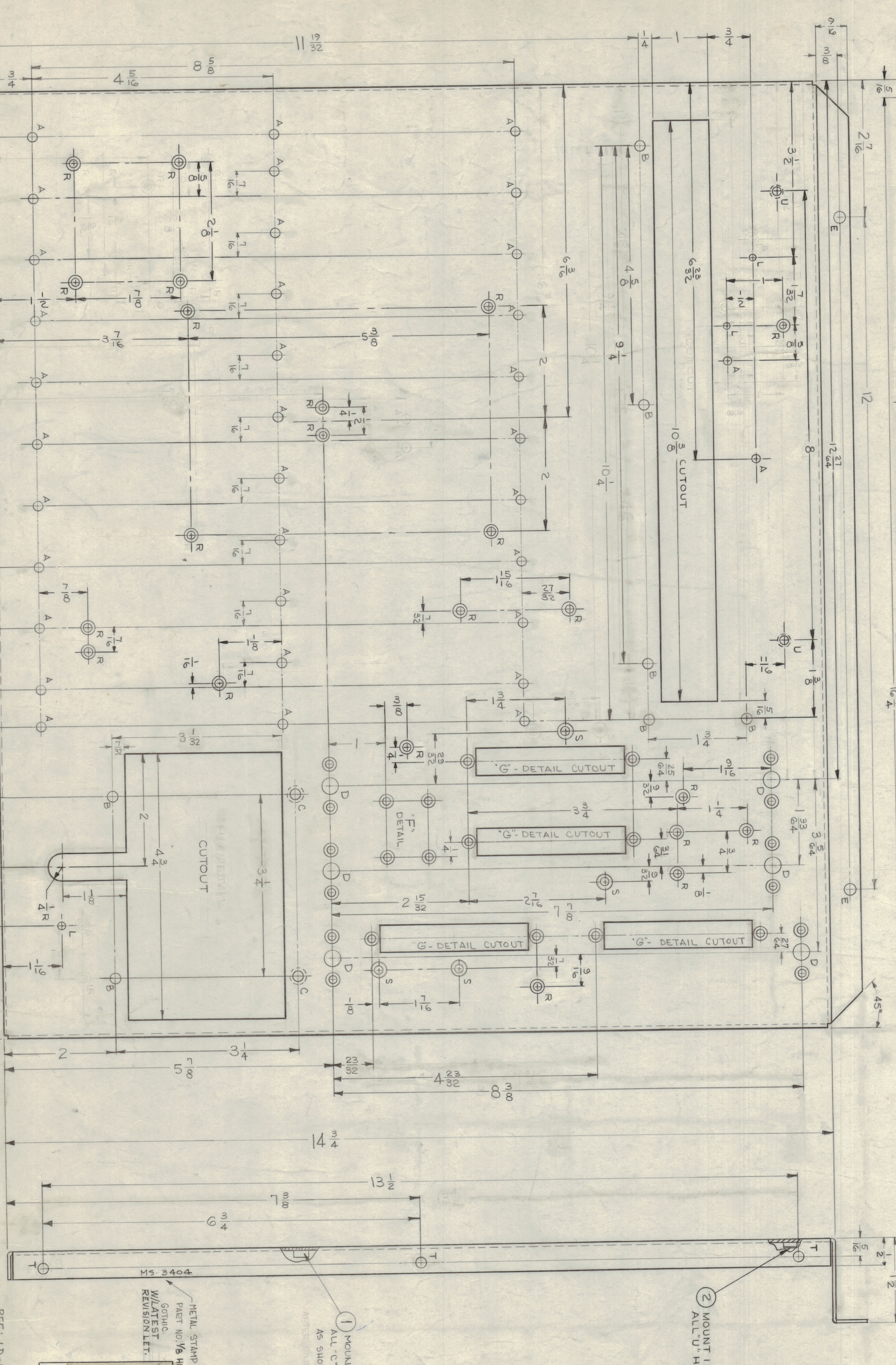


OPPOSITE SIDE IDENTICAL

REV	DATE	BY	CHKD	APPD
1	2/28/64	JL		
2		JL		
3		JL		
4	3/24/64	JL		
0	3/24/64	JL		
A	2/4/65	JL		



1 MOUNT IN ALL "C" HOLES AS SHOWN

2 MOUNT IN ALL "U" HOLES

METAL STAMP THE PAINT NO. 1/8 HIGH

GOTHIC WILL TEST REVISION LEFT.

UNLESS OTHERWISE SPECIFIED:

1. USE MATERIAL THICKNESS FOR MAXIMUM RADIUS ON ALL BENDS.
2. ALL ANGULAR BENDS 90°.
3. REMOVE ALL BURRS AND SHARP EDGES.
4. MOUNT INSERTS AFTER FINISHING.

H - DETAIL (1-REQ)

M - DETAIL (3-REQ)

N - DETAIL (3-REQ)

G - DETAIL (4-REQ)

F - DETAIL (1-REQ)

D - DETAIL (6-REQ)

HOLE	DESCRIPTION	REQ
A	.157 DIA.	37
B	.166 DIA.	15
C	.191-.194 DIA.	6
D	SEE DETAIL	2
E	SEE DETAIL	1
F	SEE DETAIL	1
G	SEE DETAIL	4
H	SEE DETAIL	2
I	5/16 x 2 1/8 SLOT	1
J	.484 DIA.	1
K	1/8 DIA.	5
L	SEE DETAIL	3
M	SEE DETAIL	3
N	SEE DETAIL	2
P	.406 DIA.	22
R	.120 DIA. & C SINK 82° X .230 DIA.	4
S	.144 DIA. & C SINK 82° X .284 DIA.	4
T	1 1/16 DIA.	2
U	.161-.164 DIA.	2

LIST OF MATERIAL

QTY	ITEM	DESCRIPTION	SYMBOL
2	NT-129-440-4	NUT, ROUND, SWAGE TYPE	U
6	NT-129-632-4	NUT, ROUND, SWAGE TYPE	C

THE TECHNICAL MATERIAL CORP.
MAMARONECK, NEW YORK

CHASSIS, ELECTRICAL, MAIN

DATE: 3-5-64
REVISED: 3-24-64
DATE: 2-4-65

SCALE: 1:1

MODEL: VLB-1
ASY: AX-434

REF: LD-13574 (2 SHEETS)

NOTES

1. THE CONTENTS OF THIS DRAWING ARE THE EXCLUSIVE PROPERTY OF THE TECHNICAL MATERIAL CORP. ANY REPRODUCTION OR REPRESENTATION IN WHOLE OR IN PART IS STRICTLY FORBIDDEN.

2. DIMENSIONS ARE IN INCHES AND INCLUDE UNLESS OTHERWISE SPECIFIED

3. DIMENSIONAL TOLERANCES

4. FINISH: 5404 - YELLOW IRDIPTE

5. DIMENSIONS ARE IN INCHES AND INCLUDE UNLESS OTHERWISE SPECIFIED

6. DIMENSIONAL TOLERANCES

7. DIMENSIONS ARE IN INCHES AND INCLUDE UNLESS OTHERWISE SPECIFIED

8. DIMENSIONAL TOLERANCES

9. DIMENSIONS ARE IN INCHES AND INCLUDE UNLESS OTHERWISE SPECIFIED

10. DIMENSIONAL TOLERANCES

11. DIMENSIONS ARE IN INCHES AND INCLUDE UNLESS OTHERWISE SPECIFIED

12. DIMENSIONAL TOLERANCES