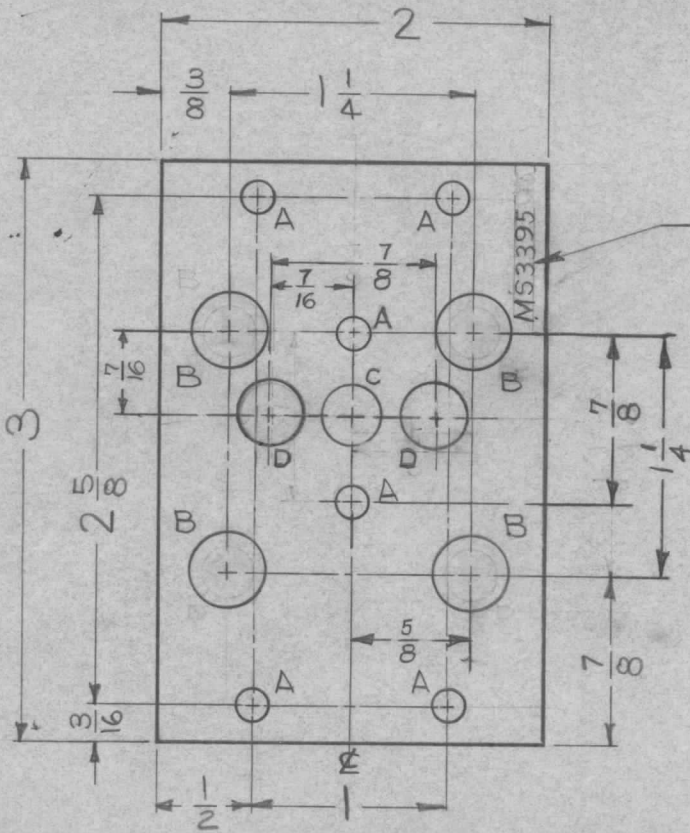


THE CONTENTS OF THIS DRAWING ARE THE EXCLUSIVE PROPERTY OF THE TECHNICAL MATERIEL CORP. ITS UNAUTHORIZED USE FOR REPRODUCTION IN WHOLE OR IN PART IS STRICTLY FORBIDDEN.

REQ. PER UNIT 1	USED ON			MS-3395	B
	MODEL GPR-92	ASS'Y. NO.	DATE 5-9-63		



METAL STAMP TMC PART NO. 1/8 HIGH GOTHIC WITH LATEST REVISION LETTER.

LEGEND		
HOLE	DESCRIPTION	REQ.
A	11/64 DIA.	6
B	3/8 DIA.	4
C	5/16 DIA.	1
D	11/32 DIA.	2

NOTE:
DEBURR ALL SHARP EDGES

							REQ. ITEM	PART NO.	J. STRUMER DESCRIPTION			SYMBOL										
							.064 THK. STOCK SIZE		THE TECHNICAL MATERIEL CORP. MAMARONECK, NEW YORK													
							ALUMINUM		BASE, FILTER													
							MATERIAL															
UNLESS OTHERWISE SPECIFIED DIMENSIONS ARE IN INCHES AND INCLUDE CHEMICALLY APPLIED OR PLATED FINISHES							SCALE	5052-H32	H32	Drawn	Checked	FINAL APPROVAL										
							F:11			7/8/63	TFH	7-8-63										
DECIMALS .X ± .05 .XX ± .01 .XXX ± .005							FRACTIONS ± 1/64 ANGLES ± 0° 30'		TYPE & TEMPER		HEAT TREAT. SPEC.		DRAWN		CHECKED		FINISH & SPEC. NO.		ELEC. DES. APP.		MECH. DES. APP.	
TOLERANCES							CODE		S404 IRIDITE 14-2 AL-COAT		JMA		MP 7/8/63		MS-3395		B					