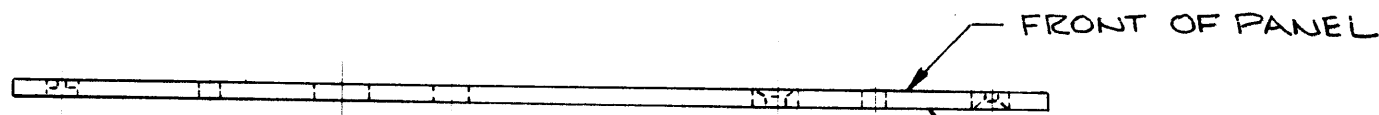
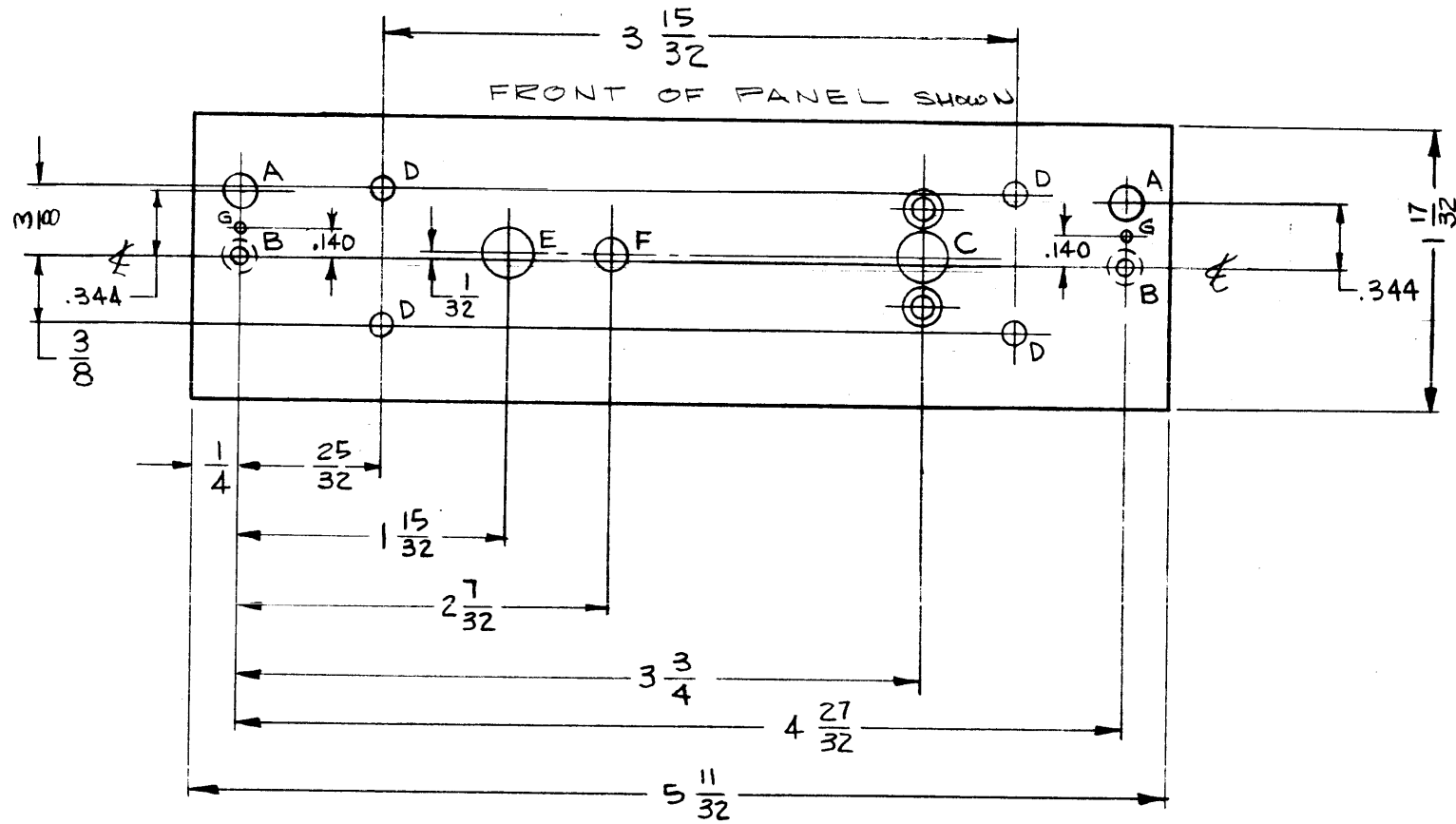
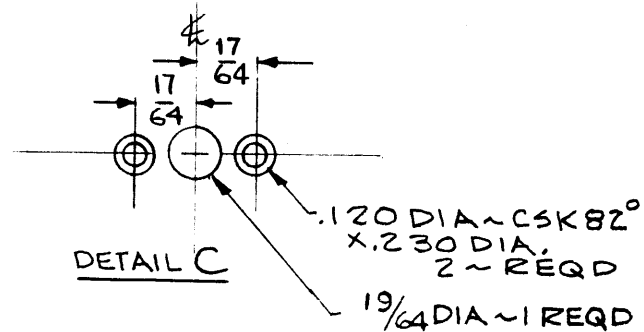


MOUNT ITEMS ① ② ③ ④ ON FRONT OF PANEL AS SHOWN USING "A" AND "B" HOLES



FRONT OF PANEL

METAL STAMP TMC PART NO. 1/8 HIGH GOTHIC ON REAR OF PANEL, WITH LATEST REV. LETTER.



NOTES

1	TTRR, 1, 2, 3, 4	
Q'TY./UNIT	MODEL USED ON	ASS'Y. NO.
SCALE 1:1	CODE A	
THE CONTENTS OF THIS DRAWING ARE THE EXCLUSIVE PROPERTY OF THE TECHNICAL MATERIEL CORP. ITS UNAUTHORIZED USE OR REPRODUCTION IN WHOLE OR IN PART IS STRICTLY FORBIDDEN.		

MS-3381 E

REVISIONS					
SYM	DESCRIPTION	DATE	E.M.N. NO.	DRAFT	CHKD
A	ITEM 4 WAS FS-120-2	7.13.64	11788	WB	JCS
B	"A" HOLE WAS .228 DIA., "G" HOLE ADDED IT. I WAS FS-119-1, IT. I CHANGED TO -2 ON PICT.	8.6.64	12072	WB	JCS
C	"A" HOLE DIA. WAS 13/64.	1.13.64	13275	9Z	JCS
D	DIM. 290 WAS 9/32 ON DETAIL "C"	8.5.65	14570	HV	JCS
E	DETAIL "C" 19/64 DIA WAS .290.	7/6/66	16491	JL	JCS

HOLE	DESCRIPTION	REQD
A	.228 DIA	2
B	.082 DIA C-BORE 3/16 DIA X.039 DEEP - REAR SIDE	2
C	SEE DETAIL	1
D	1/8 DIA	4
E	9/32 DIA	1
F	3/16 DIA	1
G	1/16 DIA	2

- ~ MACHINING ~
- 1 - LATERAL BOW OF PANEL MUST BE KEPT WITHIN 1/32.
 - 2 - MILL ALL EDGES.
 - 3 HOLES MUST BE DRILLED.
 - 4 - PANEL MUST BE FREE OF ALL MACHINING MARKS, GOUGES & SCRATCHES. IF NECESSARY, SAND FRONT OF PANEL WITH No. 120 SANDPAPER.

- ~ FINISH NOTES ~
- S404 - IRIDITE 14-2 AL-COAT
 - S114 - ZINC CHROMATE PRIMER
 - S115 - SMOOTH GREY ENAMEL
- FINISH ALL OVER

REF: LD-1332

REQ'D.	ITEM	PART NUMBER	DESCRIPTION	SYMBOL
2	4	FS-120-1	POST, SNAPSLIDE FASTENER	
4	3	WA-131-22	WASHER, SPRING TENSION	
2	2	FS-118-1	LATCH, SNAPSLIDE FASTENER	
2	1	FS-119-2	LATCH GUIDE SNAPSLIDE FASTENER	

JORDAN LIST OF MATERIAL E 8037-222

MATERIAL .081THK. ALUMINUM 2024-T3

FINISH SEE "FINISH NOTE"

TITLE PANEL, FRONT

UNLESS OTHERWISE SPECIFIED DIMENSIONS ARE IN INCHES AND INCLUDE CHEMICALLY APPLIED OR PLATED FINISHES

DECIMALS .X ± .05 .XX ± .01 .XXX ± .005

FRACTIONS ± 1/64 ± 0° 30'

TOLERANCES

DRAWN *[Signature]* DATE 5-27-63

CHECKED *[Signature]* DATE 5/23/63

ELECT. DES. *[Signature]* DATE

MECH. DES. W. A. PALMER DATE 1/16/67

FINAL APPROVAL *[Signature]* DATE

MS-3381 E

SHEET

REV. LTR.