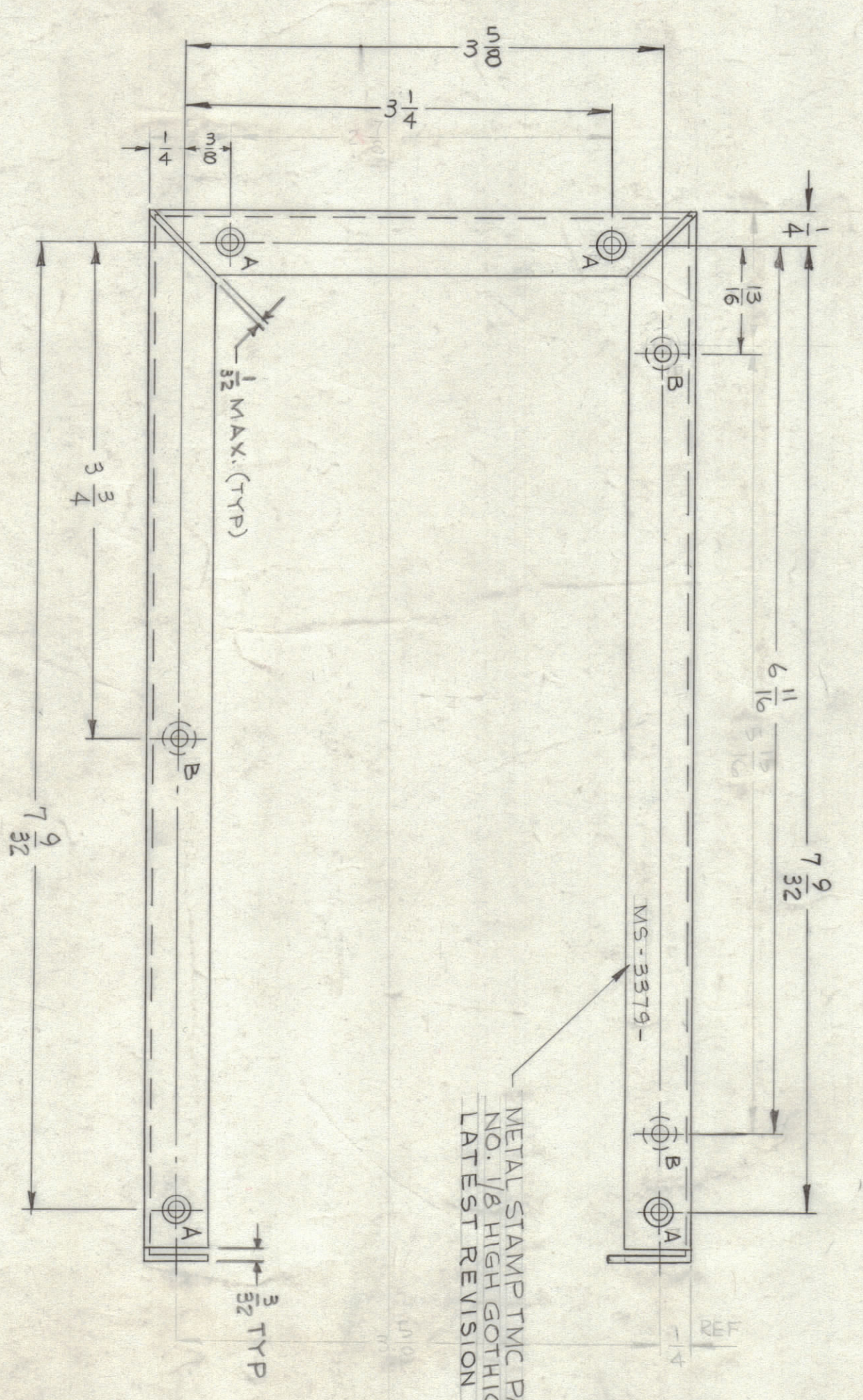
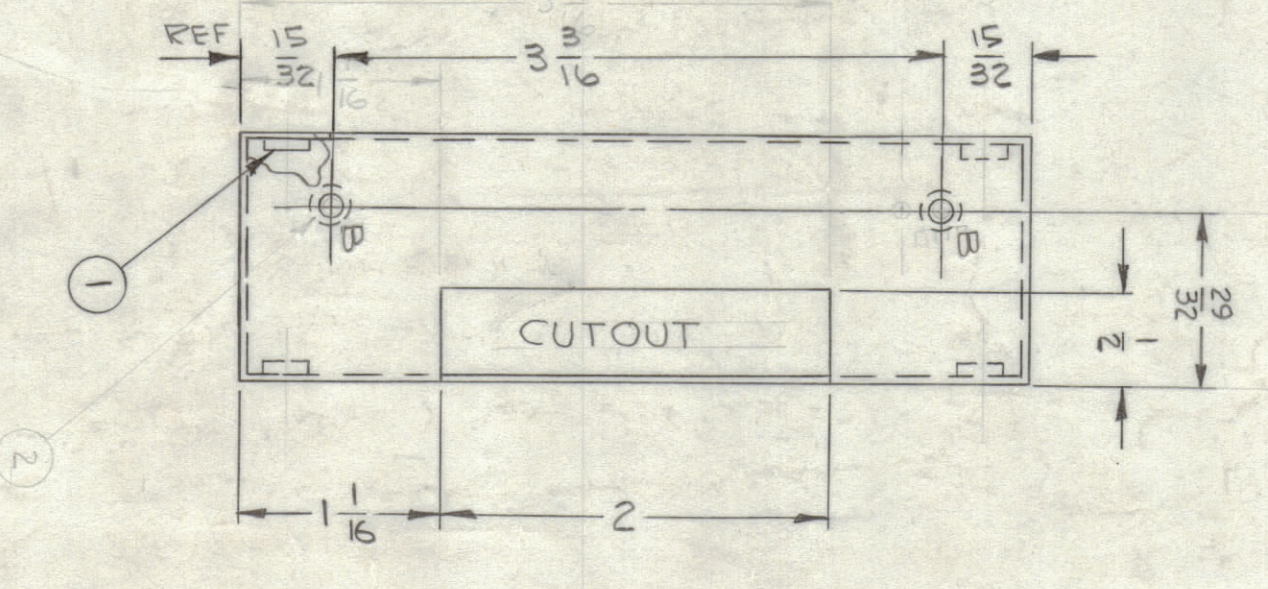
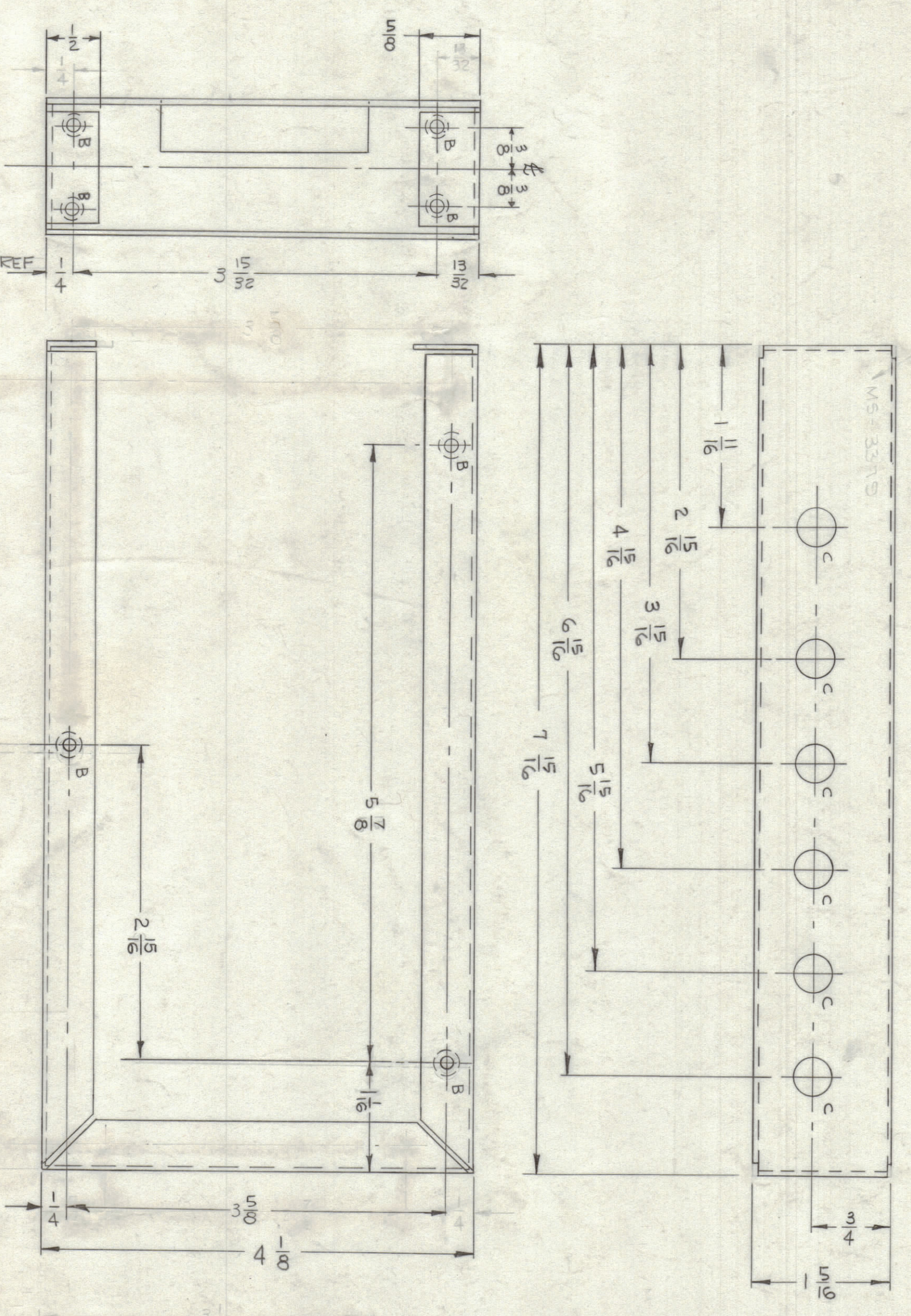


METAL STAMP TMC PART NO. 1/8" HIGH GOTHIC



METAL STAMP TMC PART NO. 1/8" HIGH GOTHIC WITH LATEST REVISION LETTER.

HOLE	DESCRIPTION	REQD
A	.120 DIA - CSK 82° X .230 DIA	4
B	.161 - .164 DIA	12
C	3/8 DIA	6
D	1/8 DIA	4
E	1/16 DIA	2

NOTES:  
 1. USE MATERIAL THICKNESS FOR MAX. BEND RADIUS.  
 2. ALL ANGLES ARE BENDS 90°.  
 3. MOUNT ITEM # 1 IN ALL "B" HOLES AS SHOWN AFTER FINISHING.  
 4. ALL DIMENSIONS ARE IN INCHES UNLESS SHOWN OTHERWISE.

SYMBOL	ZONE	DESCRIPTION	DATE	CH. NO.	BY	CHECKED	REV. APP.
B	C7	DIM 2 5/16 WAS 3	6-8-64	11517	AMB	2	184
A	B2D5	2 DIMS (8 DIA) CHANGED TO "A" HOLES	5-21-64	11436	AMB	808	110
A	B4D18	DIM 1 1/4 WAS 1 1/2 DIM 3 7/8 WAS 5 1/8					

UNLESS OTHERWISE SPECIFIED:  
 DIMENSIONS ARE IN INCHES  
 TOLERANCES ON FRACTIONS ± 1/64 DECIMALS ± .005 ANGLES ± 1/2°

SCALE: MAXIMUM ALLOWABLE TOLERANCES HAVE BEEN DETERMINED AND ANY DEVIATIONS REMOVE ALL BURRS & SHARP EDGES

REQ. FROM PART	1	TTRT	SECTION	USED ON	DATE
A	1	TTRT			5-22-63
	1	TTR			5-22-63

REF. I.D.	REF. I.T.	REF. I.T.	REF. I.T.	REF. I.T.	REF. I.T.	REF. I.T.	REF. I.T.	REF. I.T.	REF. I.T.
1211	NT-129	440-4	NUT SWAGE	5052-H32	5404 YELLOW IRIDIUM	5-22-63	5-22-63	5-22-63	5-22-63
THE TECHNICAL MATERIAL CORP. MANHATTAN, NEW YORK CONVERTER MODULE CHASSIS WEAR BOARD									
DRAWN: <i>W.A. Parker</i> CHECKED: <i>W.A. Parker</i> DATE: <i>5/21/63</i>					FINAL APPROVAL: <i>W.A. Parker</i>				
SHEET: MS-3379 OF: 1									

MS-3379