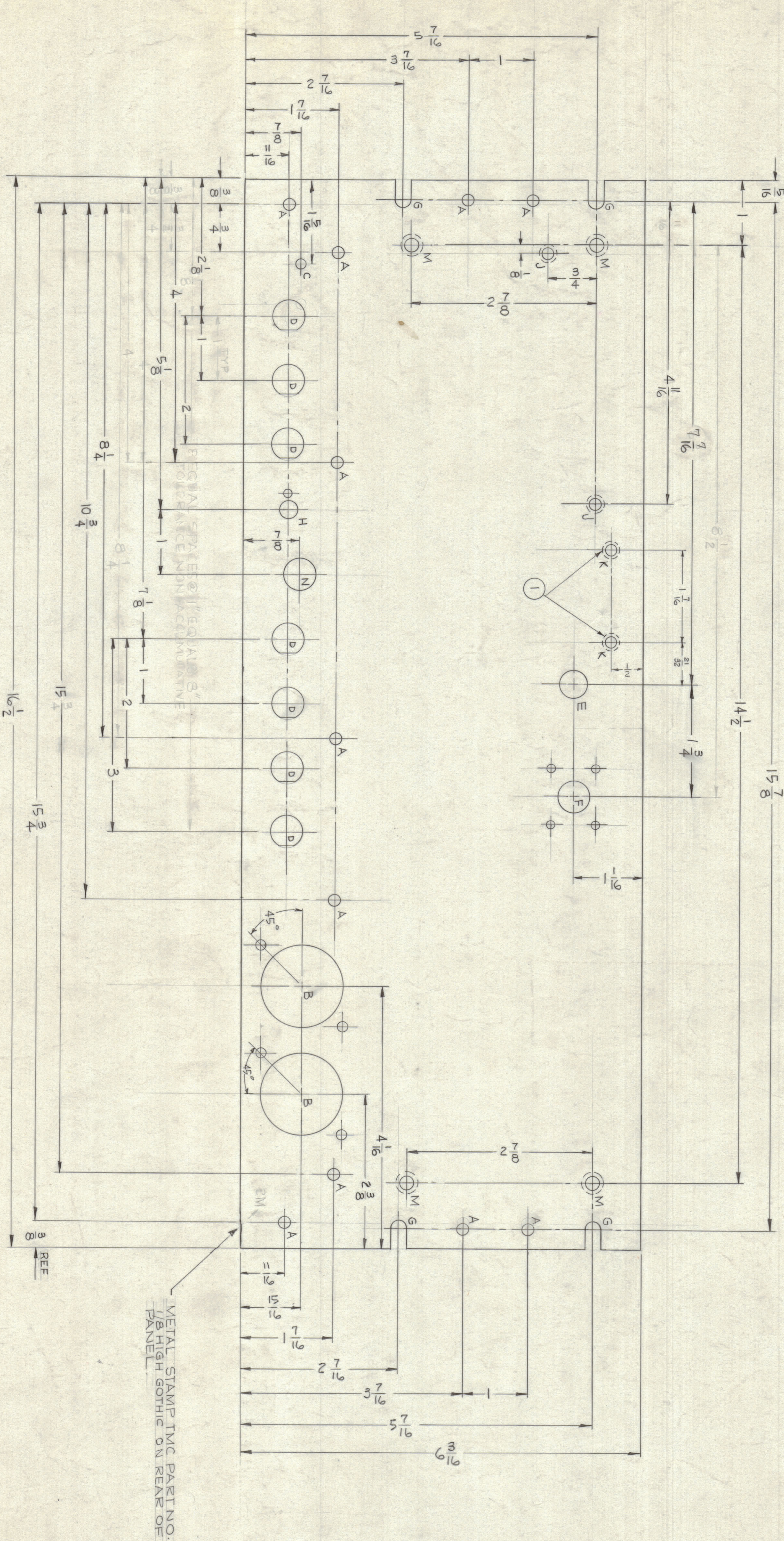


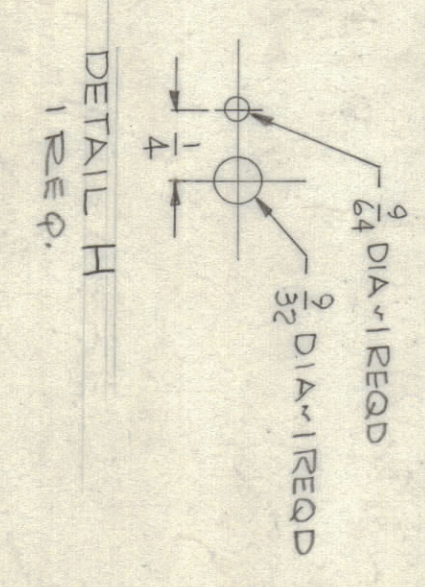
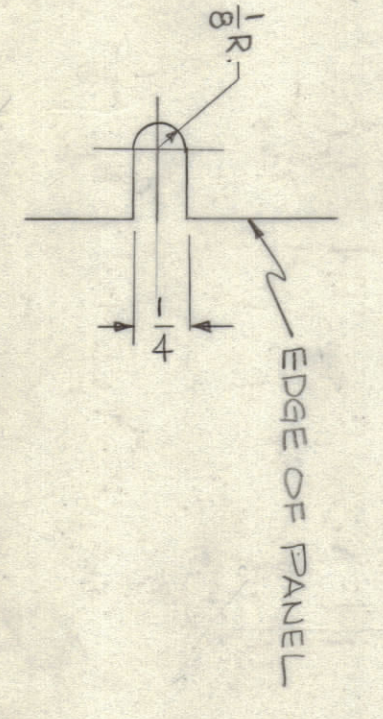
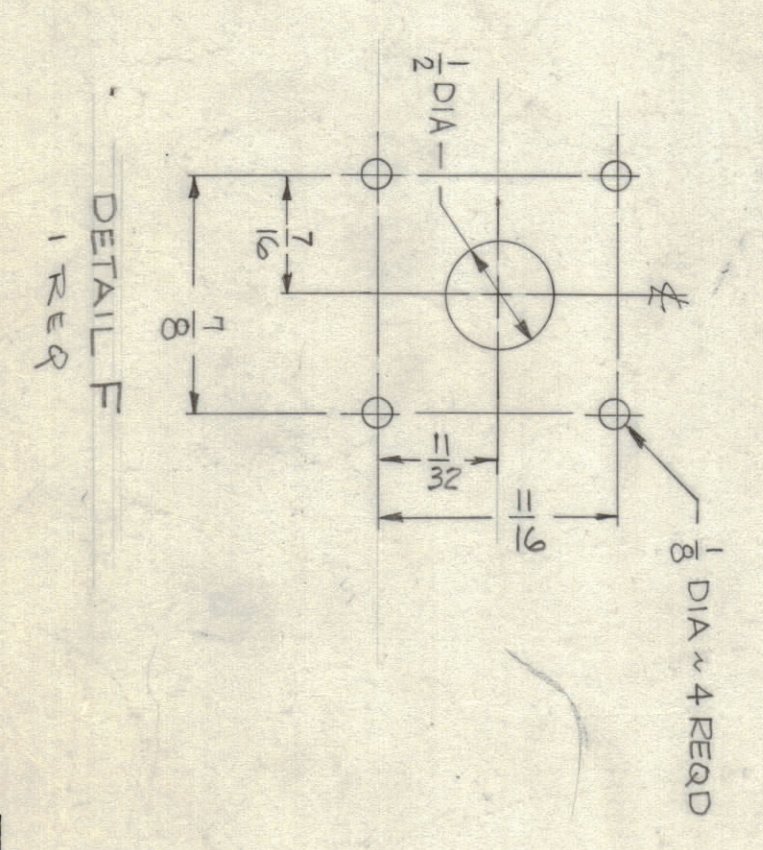
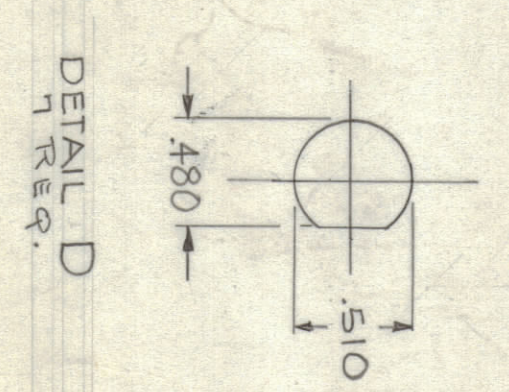
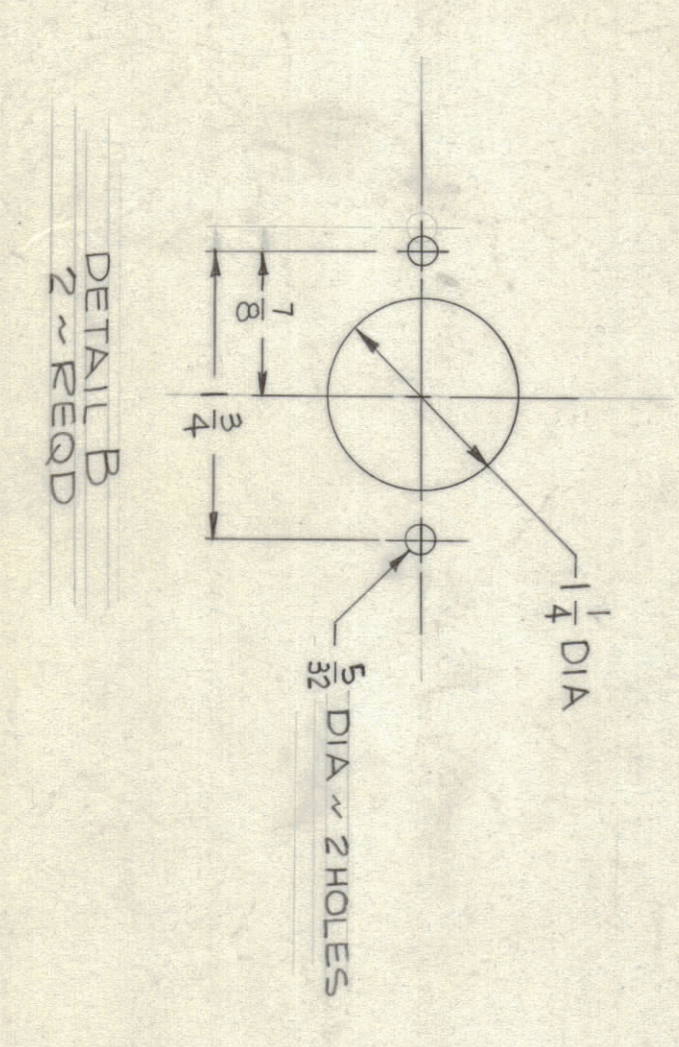
ZONE	SYM	DESCRIPTION	DATE	E.M.N. NO.	DRAFT	CHG	APPD
1							
2		REVISIONS					



HOLE	DESCRIPTION	REQD
A	3/16 DIA	11
B	SEE DETAIL	2
C	5/32 DIA	1
D	SEE DETAIL	1
E	7/16 DIA	1
F	SEE DETAIL	1
G	SEE DETAIL	4
H	SEE DETAIL	1
J	.169 DIA. CSK82° X .337 DIA	2
M	.196 DIA. CSK82° X .390 DIA	4
N	.161 DIA. 1/2 DIA. 1/4 DIA	1
K	.161 - .164 DIA. 39.0 DIA	2

FRONT OF PANEL SHOWN

METAL STAMP TMC PART NO. 1/8 HIGH GOTHIC ON REAR OF PANEL



REF: LD-1321

NO.	DATE	DESCRIPTION	BY	CHKD
1	5-16-53	INITIAL APPROVAL		
2	5-16-53	CHECKED		
3	5-16-53	DATE		
4	5-16-53	DATE		
5	5-16-53	DATE		

UNLESS OTHERWISE SPECIFIED DIMENSIONS ARE IN INCHES AND INCLUDE CHEMICALLY APPLIED OR PLATED FINISHES TOLERANCES

FRACIONS	ANGLES	±
1/16	± 30'	
1/8	± 30'	
3/16	± 30'	
1/4	± 30'	
5/16	± 30'	
3/8	± 30'	
1/2	± 30'	
5/8	± 30'	
3/4	± 30'	
7/8	± 30'	
1	± 30'	

THE TECHNICAL MATERIAL CORP. MAMARONECK, NEW YORK

PLATE, REAR

MS-3357