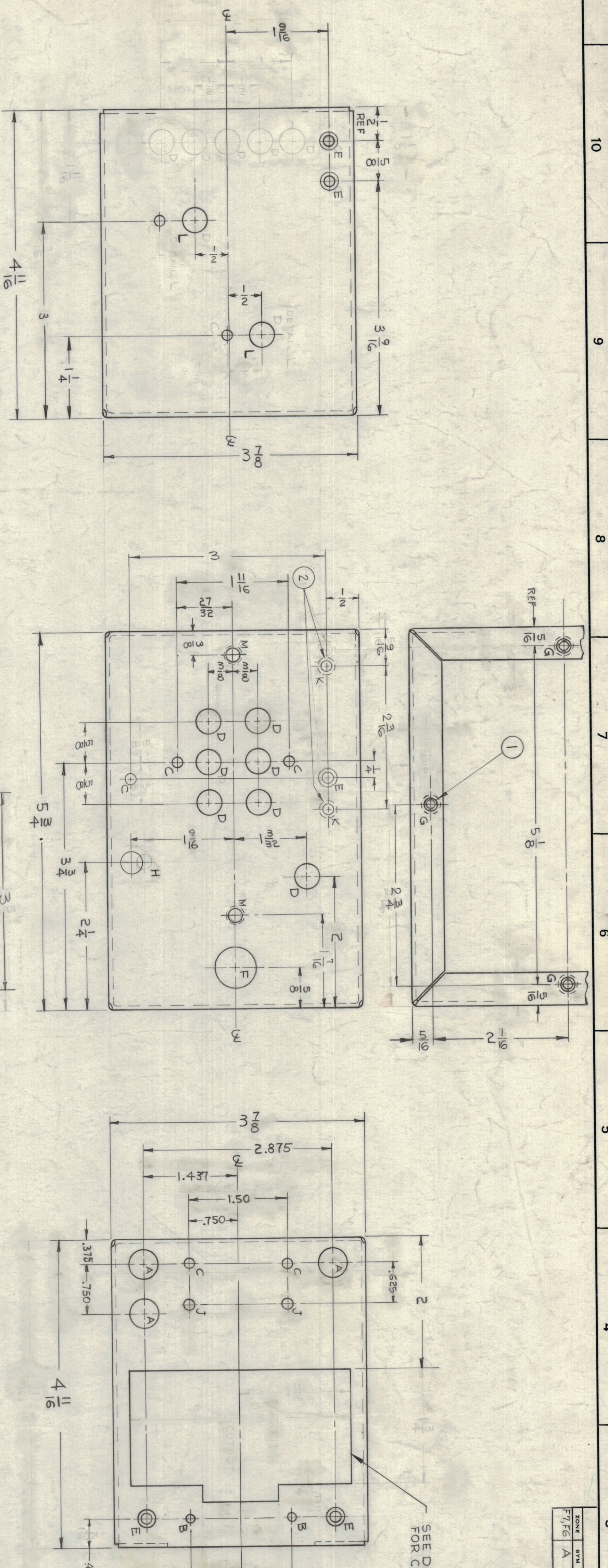


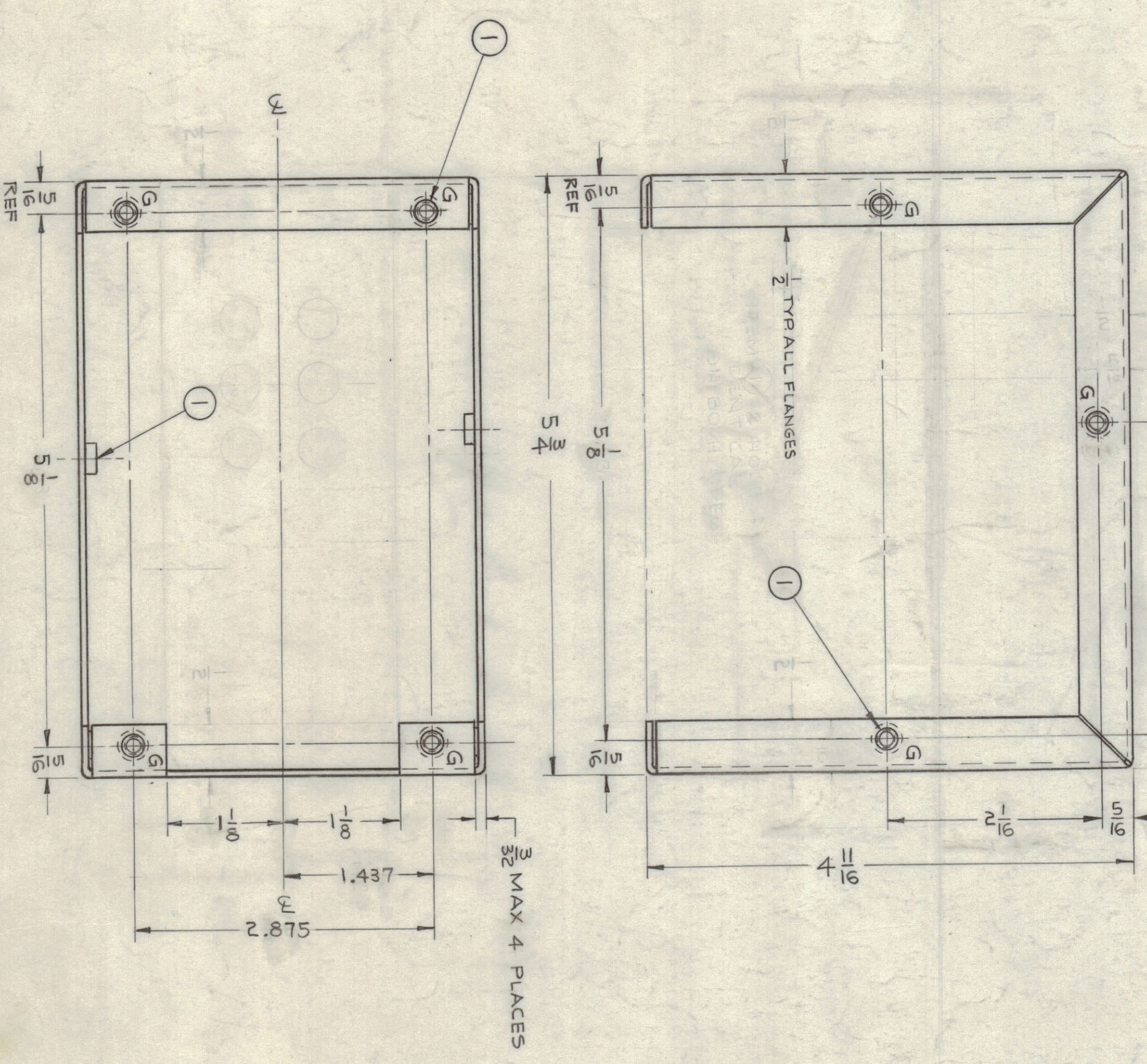
ZONE	SYM	DESCRIPTION	DATE	ENGR. NO.	DRFT	CHKD	APPD
F1/F6	A	2 " 3" HOLES DELETED, 2 " 4" HOLES & ITEM 3 ADDED	9/3/61	11461	AM		

REV	DATE	ENGR. NO.	DRFT	CHKD	APPD
1	9/3/61	11461	AM		

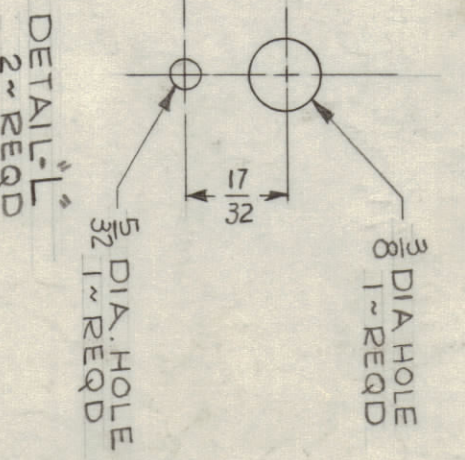


REF	DESCRIPTION	REQD
A	7/16 DIA	3
B	1/8 DIA	2
C	5/32 DIA	9
D	3/8 DIA	9
E	.144 DIA & CSK 82° x .284 DIA	3
F	5/8 DIA	1
G	.191 - .194 DIA	10
H	1/32 DIA	1
J	11/64 DIA	2
K	.161 - .164 DIA	2
M	.221 - .224 DIA	2

- NOTES:
1. USE MATERIAL THICKNESS FOR MAX RADIUS ON ALL BENDS.
  2. ALL ANGULAR BENDS 90°, UNLESS OTHERWISE SPECIFIED.
  3. MOUNT ITEM 1 IN ALL "G" HOLES AS SHOWN AFTER FINISHING.
  4. REMOVE ALL BURRS & SHARP EDGES.



DETAIL "K" SCALE 1:1



REF	DESCRIPTION	REQD
2	NT-129-832-4	1
3	NT-129-440-4	1
10	NT-129-832-4	1

THE TECHNICAL MATERIAL CORP.  
MAMARONECK, NEW YORK

QTY	UNIT	DESCRIPTION	DATE	BY	CHKD	APPD
1	TR-10	AX-412				
1	TR-10	AX-411				
1	TR-10	AX-410				
1	TR-10	AX-412				

NOTES

THE CONTENTS OF THIS DRAWING ARE THE EXCLUSIVE PROPERTY OF THE TECHNICAL MATERIAL CORP. REPRODUCTION IN WHOLE OR IN PART IS STRICTLY FORBIDDEN.

MS-3350 A