

THE CONTENTS OF THIS DRAWING ARE THE EXCLUSIVE PROPERTY OF THE TECHNICAL MATERIEL CORP. ITS UNAUTHORIZED USE FOR REPRODUCTION IN WHOLE OR IN PART IS STRICTLY FORBIDDEN.

REQ. PER UNIT

USED ON

MODEL

ASS'Y. NO.

DATE

1

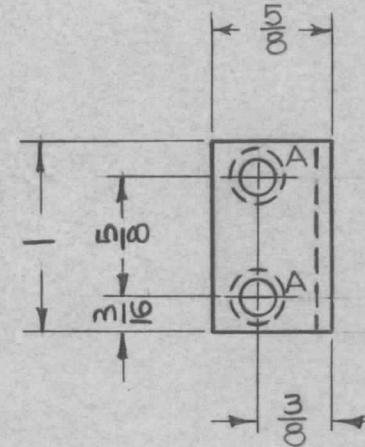
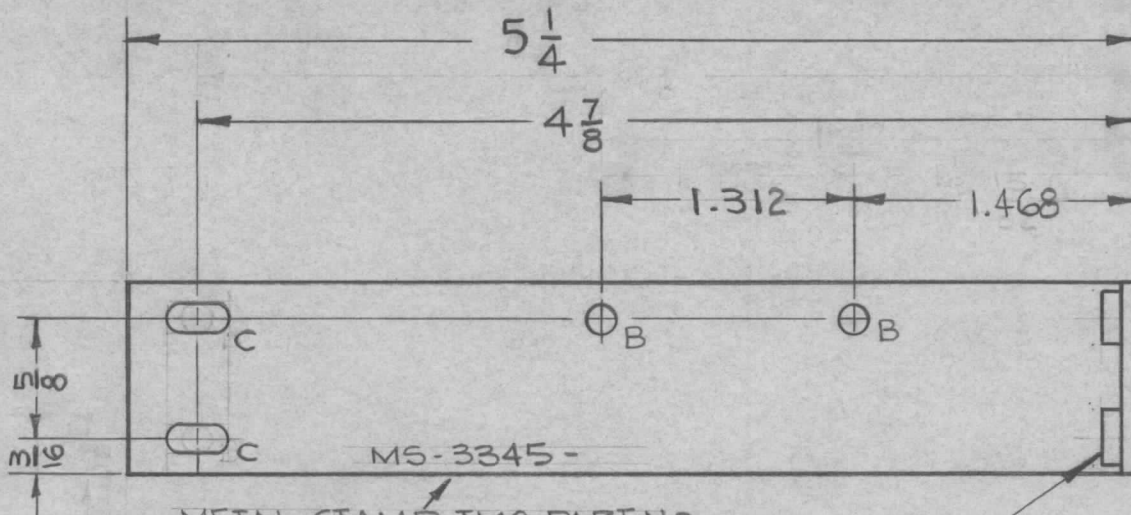
TTR-10

AX 409

4-22-63

MS-3345

A



METAL STAMP TMC PART NO. 1/8 HIGH GOTHIC, WITH LATEST REV. LETTER.

① MOUNT IN ALL "A" HOLES AS SHOWN

NOTES

- USE MATERIAL THICKNESS FOR MAX RADIUS ON ALL BENDS UNLESS OTHERWISE SPECIFIED
- ALL ANGULAR BENDS 90° UNLESS OTHERWISE SPECIFIED
- REMOVE ALL BURRS & SHARP EDGES

HOLE	DESCRIPTION	REQ'D
A	.191-.194 DIA	2
B	5/32 DIA	2
C	5/16 X 5/32 SLOT	2

2	1	NT-129-632-4	NUT, SWAGE	A
REQ.	ITEM	PART NO.	KOHN DESCRIPTION	E 3037-71 SYMBOL
.081 THK STOCK SIZE			THE TECHNICAL MATERIEL CORP. MAMARONECK, NEW YORK	
ALUMINUM MATERIAL			BRACKET, CAPACITOR MTG. IFA TANK	
UNLESS OTHERWISE SPECIFIED DIMENSIONS ARE IN INCHES AND INCLUDE CHEMICALLY APPLIED OR PLATED FINISHES		SCALE FULL	5052-H32 TYPE & TEMPER	HEAT TREAT. SPEC.
DECIMALS	FRACTIONS	CODE	DRAWN	CHECKED
.X ± .05	± 1/64	A	R. KOHN	W. JORDAN
.XX ± .01	ANGLES ± 0° 30'		5/8/63	
.XXX ± .005			FINISH & SPEC. NO.	ELEC. DES. APP. MECH. DES. APP.
			MS-3345	A