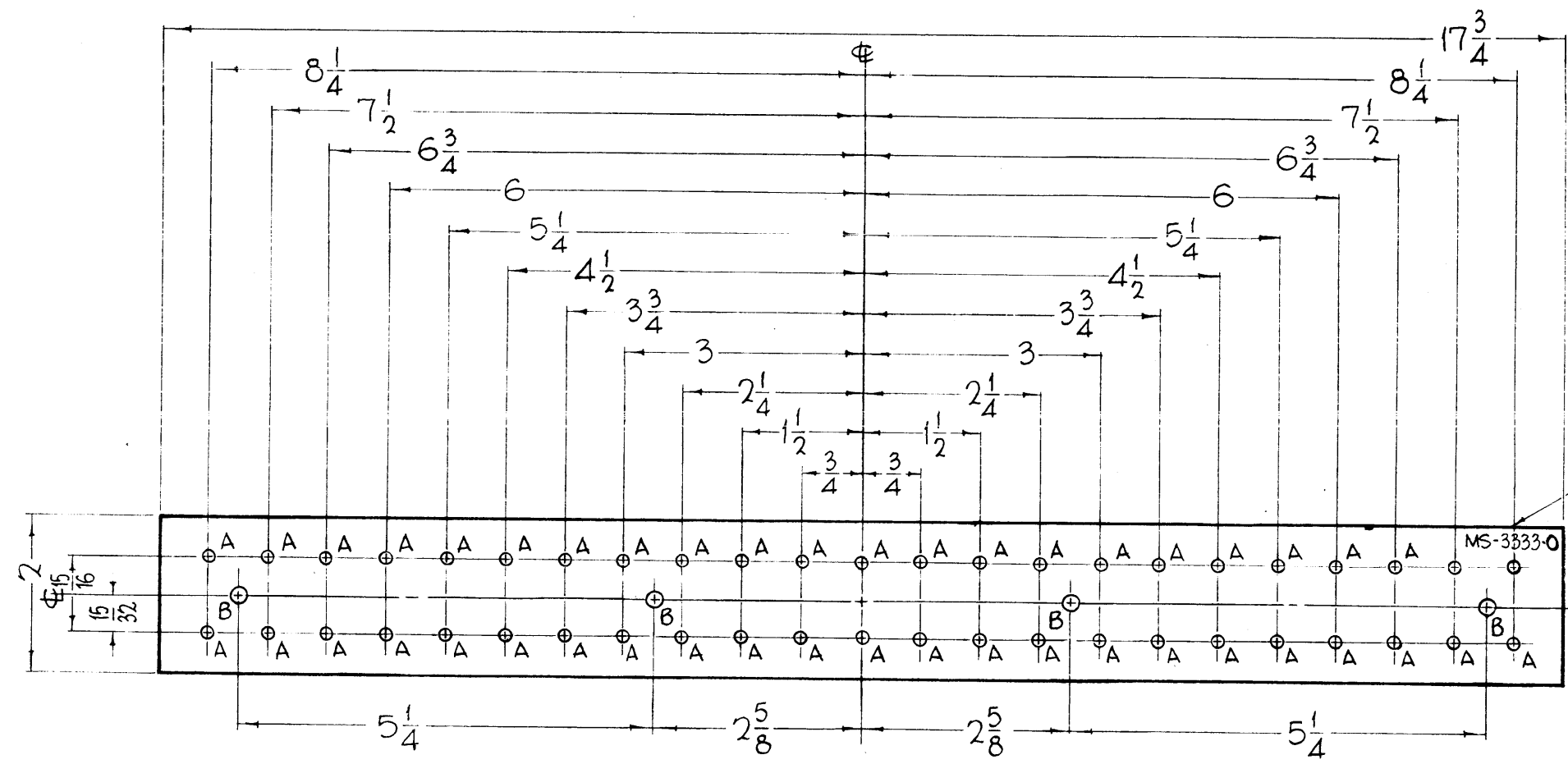


MS-33330

REVISIONS

SYM	DESCRIPTION	DATE	E.M.N. NO.	DRAFT	CHKD	APFD
0	ORIGINAL RELEASE FOR PRODUCTION	3-2-64		A.M.		



HOLES	REQ.
A - NO. 30 DRILL	46
B - 7/32 DIA.	4

METAL STAMP TMC PART NO. 1/8" HIGH GOTHIC.

REF - TMC DWG. NO. LD-1284

UNLESS OTHERWISE SPECIFIED:
REMOVE ALL BURRS AND SHARP EDGES.

NOTES

1	GPI-200K	AX-393
QTY./UNIT	MODEL USED ON	ASSY. NO.
SCALE 1/2" = 1"	CODE A	
THE CONTENTS OF THIS DRAWING ARE THE EXCLUSIVE PROPERTY OF THE TECHNICAL MATERIEL CORP. ITS UNAUTHORIZED USE OR REPRODUCTION IN WHOLE OR IN PART IS STRICTLY FORBIDDEN.		

REQ'D.	ITEM	PART NUMBER	DESCRIPTION	SYMBOL
F. BUDETTI LIST OF MATERIAL				
MATERIAL .081 THICK, ALUMINUM, 5052 H-32			THE TECHNICAL MATERIEL CORP. MAMARONECK, NEW YORK	
FINISH S-788-BLACK TEXTURED VINYL				
			TITLE PLATE, FUSE MTG LARGE	
UNLESS OTHERWISE SPECIFIED DIMENSIONS ARE IN INCHES AND INCLUDE CHEMICALLY APPLIED OR PLATED FINISHES			DRAWN John C. Biele	DATE 8-28-63
			CHECKED JCB	DATE 2/25/64
			ELECT. JCB	DATE 2/25/64
			MECH. DES. JCB	DATE 2/17/64
			FINAL APPROVAL MS-3333	
			SHEET	
			REV. LTR.	