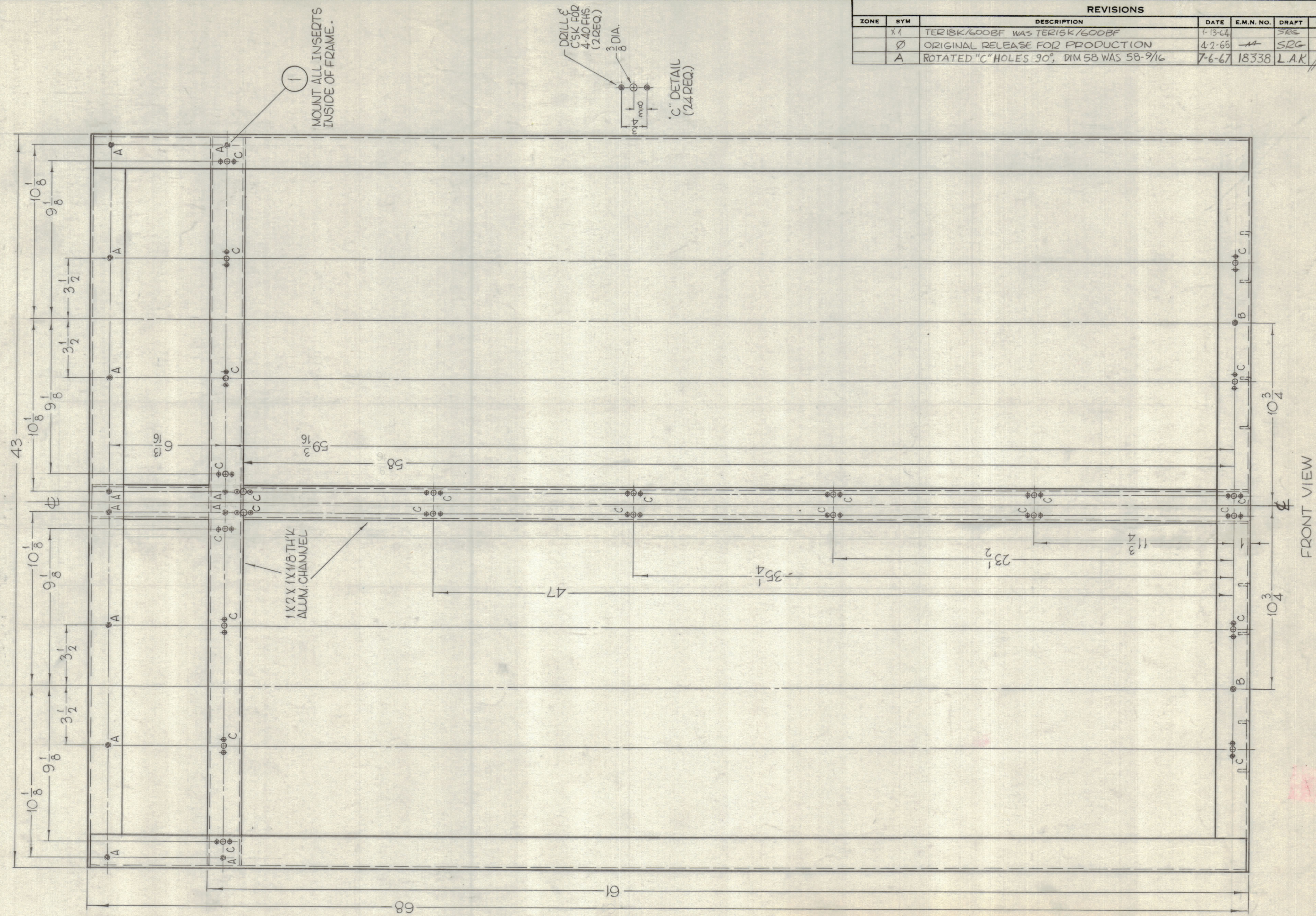


REVISIONS						
ZONE	SYM	DESCRIPTION	DATE	E.M.N. NO.	DRAFT	CHKD
X1		TER18K/600BF WAS TER15K/600BF	1-13-64		SRG	
Ø		ORIGINAL RELEASE FOR PRODUCTION	4-2-65		SRG	
A		ROTATED "C" HOLES 90°, DIM 58 WAS 58-9/16	7-6-67	18338	L.A.K.	FB



- UNLESS OTHERWISE SPECIFIED
- CONSTRUCTION 2X2 X 1/8 THICK, ALUMINUM, EXTRUDED, TYPE 6063-T5.
 - MOUNT ALL INSERTS AFTER FINISHING.
 - ALL WELD JOINTS TO BE VEE'D OUT PRIOR TO WELDING.
 - WELDING TO BE PER MIL-T-5021C, TUNGSTEN INERT GAS PROCESS.
 - ALL JOINTS SHOULD BE WELDED INSIDE AND OUTSIDE.

- ALL OUTSIDE WELDS TO BE GROUND FLUSH.
- OUTSIDE SURFACES TO BE REASONABLY FREE OF SCRATCHES AND TOOL MARKS AND HAVE A SURFACE ROUGHNESS NOT TO EXCEED $\sqrt{125}$.

NOTES

QTY./UNIT	MODEL USED ON	ASS'Y. NO.
1	TER 18K/600BF	

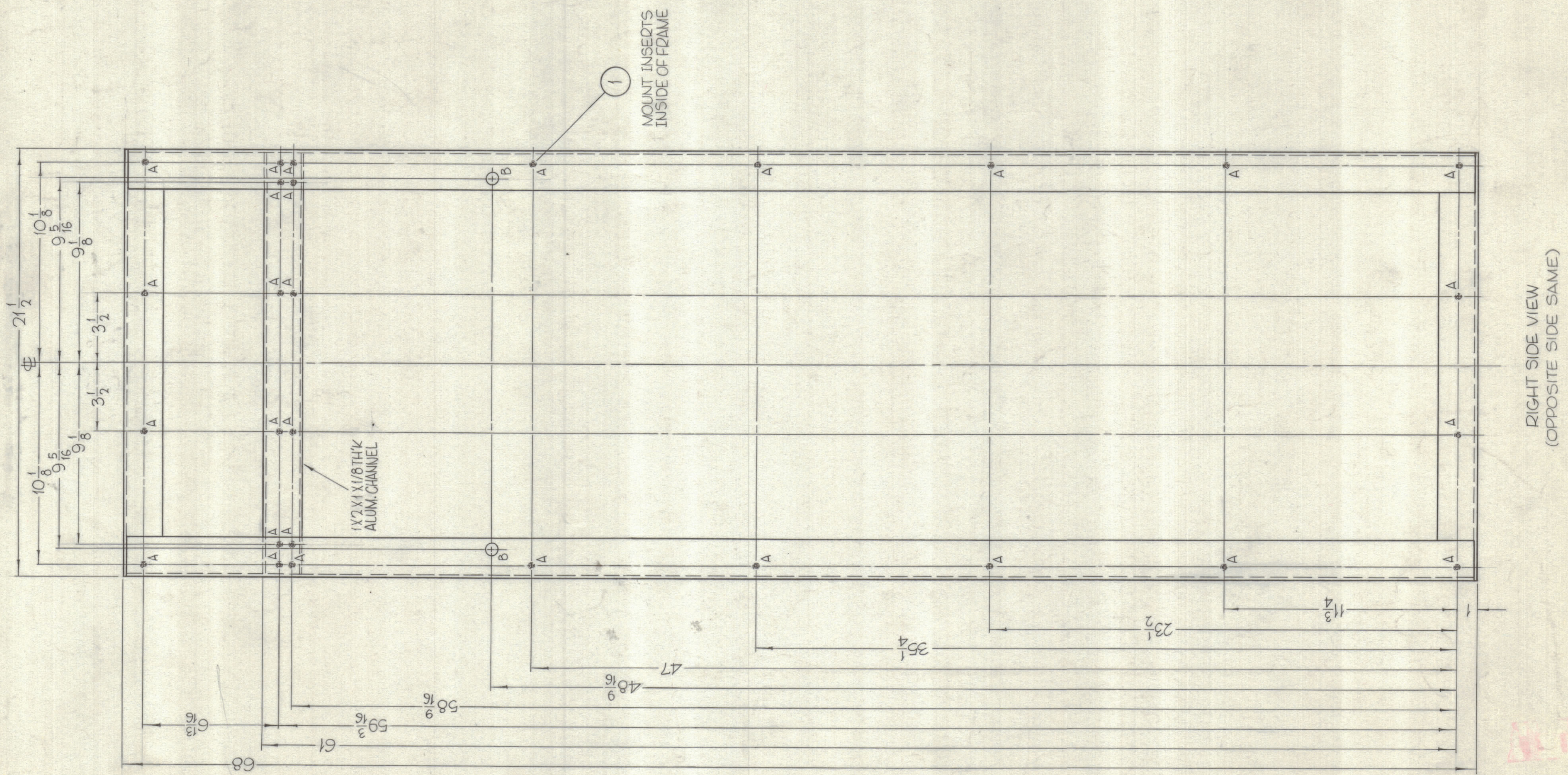
SCALE 1/4" = 1"

THE CONTENTS OF THIS DRAWING ARE THE EXCLUSIVE PROPERTY OF THE TECHNICAL MATERIEL CORP. ITS UNAUTHORIZED USE OR REPRODUCTION IN WHOLE OR IN PART IS STRICTLY FORBIDDEN.

REQ'D.	ITEM	PART NUMBER	DESCRIPTION	SYMBOL
12	1	NT-129-1032-6	NUT, ROUND, SWAGE TYPE	
F. BUDETTI LIST OF MATERIAL				
MATERIAL			THE TECHNICAL MATERIEL CORP. MAMARONECK, NEW YORK	
SEE NOTES			TITLE	
FINISH			FRAME, MAIN	
S404 IRIDITE, 14-2 AL-COAT			DRAWN John C Biele DATE 8/20/63	
UNLESS OTHERWISE SPECIFIED DIMENSIONS ARE IN INCHES AND INCLUDE CHEMICALLY APPLIED OR PLATED FINISHES			CHECKED JCB DATE 4/2/65	
DECIMALS .X ± .05 .XX ± .01 .XXX ± .005			ELECT. DES. DATE	
FRACTIONS ± 1/64 ANGLES ± 0° 30'			MECH. DES. DATE	
			FINAL APPROVAL [Signature] DATE	
			MS-3324 A	
			SHEET 1 OF 5	
			REV. LTR.	

MS-3324 A

REVISIONS							
ZONE	SYM	DESCRIPTION	DATE	E.M.N. NO.	DRAFT	CHKD	APPD
X1		TER 18K/600BF WAS TER 15K/600BF	7-13-64		SRG		
Ø		ORIGINAL RELEASE FOR PRODUCTION	4-2-65	-M-	SRG		
A		SEE SHEET 1 OF 5	7-7-67	18338	LAK		FB

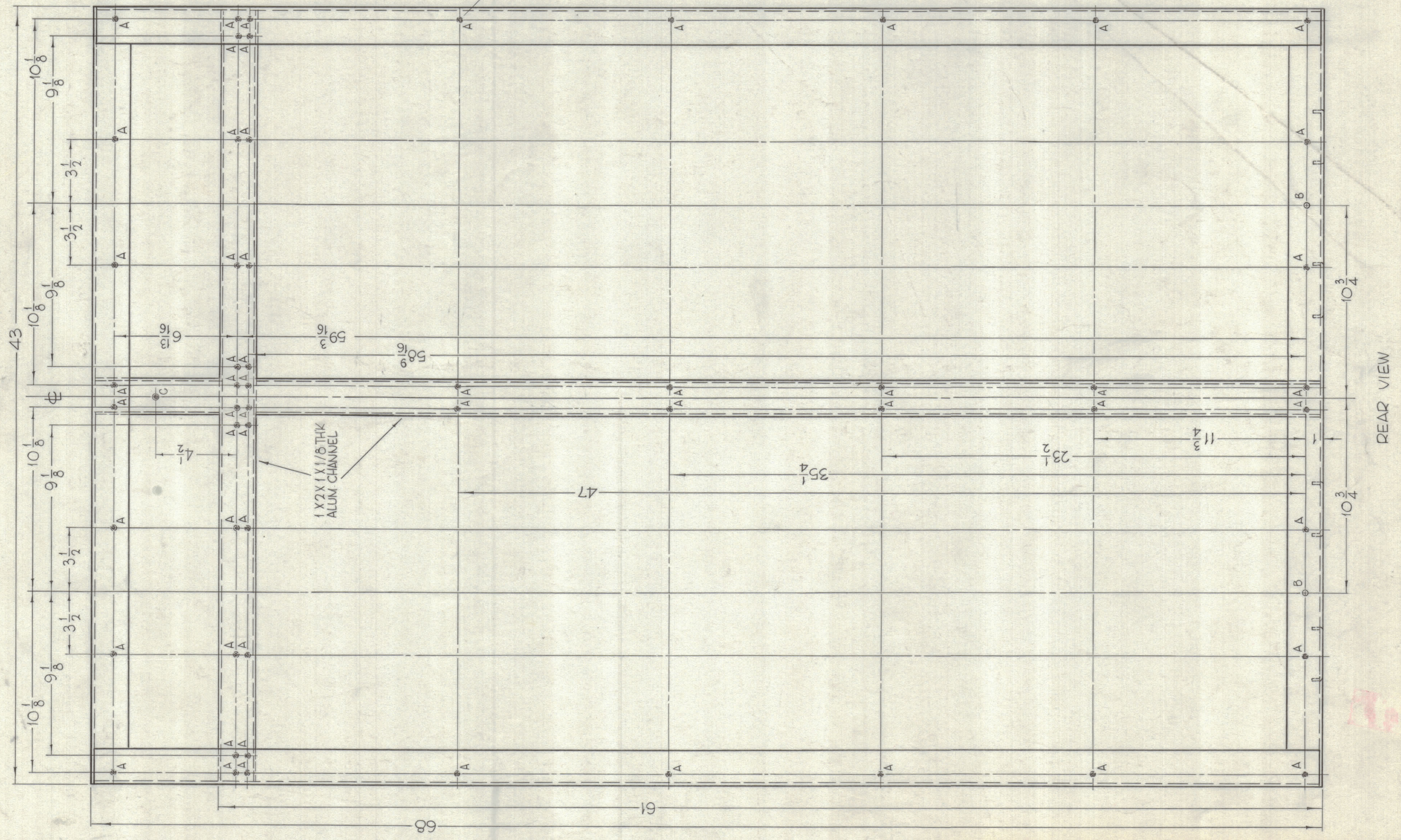


ALL SPECIFICATIONS APPLY AS PER SHEET NO. 1.

HOLES		REQ.	28	1	NT-129-1032-6	NUT, ROUND, SWAGE TYPE
A-.250 MIN., .253 MAX. DIA'S FOR MTG. NT-129-1032-6 (MOUNT INSIDE FRAME)			28			
B-5/8 DIA.			2			
1		TER-18K/600BF				
Q'TY./UNIT	MODEL USED ON	ASS'Y. NO.				
SCALE	CODE					
1/4" = 1"						
THE CONTENTS OF THIS DRAWING ARE THE EXCLUSIVE PROPERTY OF THE TECHNICAL MATERIEL CORP. ITS UNAUTHORIZED USE OR REPRODUCTION IN WHOLE OR IN PART IS STRICTLY FORBIDDEN.			UNLESS OTHERWISE SPECIFIED DIMENSIONS ARE IN INCHES AND INCLUDE CHEMICALLY APPLIED OR PLATED FINISHES		DRAWN John C. Biele DATE 8/20/63	
DECIMALS .X ± .05 .XX ± .01 .XXX ± .005			FRACTIONS ± 1/64 ANGLES ± 0° 30'		CHECKED DATE 4/2/65	
TOLERANCES			ELECT. DES.		DATE 7-2-65	
NOTES			MECH. DES.		DATE 7-2-65	
			F. BUDETTI		FINAL APPROVAL DATE 8/20/63	
			LIST OF MATERIAL		THE TECHNICAL MATERIEL CORP. MAMARONECK, NEW YORK	
			SEE SHEET NO. 1		TITLE FRAME, MAIN	
			SEE SHEET NO. 1		MS-3324 A	
					SHEET 2 OF 5	
					REV. LTR.	

MS-3324 A

REVISIONS							
ZONE	SYM	DESCRIPTION	DATE	E.M.N. NO.	DRAFT	CHKD	APPD
	X1	TER18K/600BF WAS TER15K/600BF	1-13-64		SRG		
	Ø	ORIGINAL RELEASE FOR PRODUCTION	4-2-65		SRG		
	A	SEE SHEET 1 OF 5	7-7-67	18338	LAK		F.B.



ALL SPECIFICATIONS APPLY AS PER SHEET NO.1.

HOLES
 A- .250 MIN., .253 MAX. DIA'S - 56 REQ.
 FOR MTC NT-129-1032-6.
 (MOUNT INSIDE FRAME)
 B- 9/32 DIA. - 2 REQ. C- DRILL & CSW 1032 FHS-1REQ

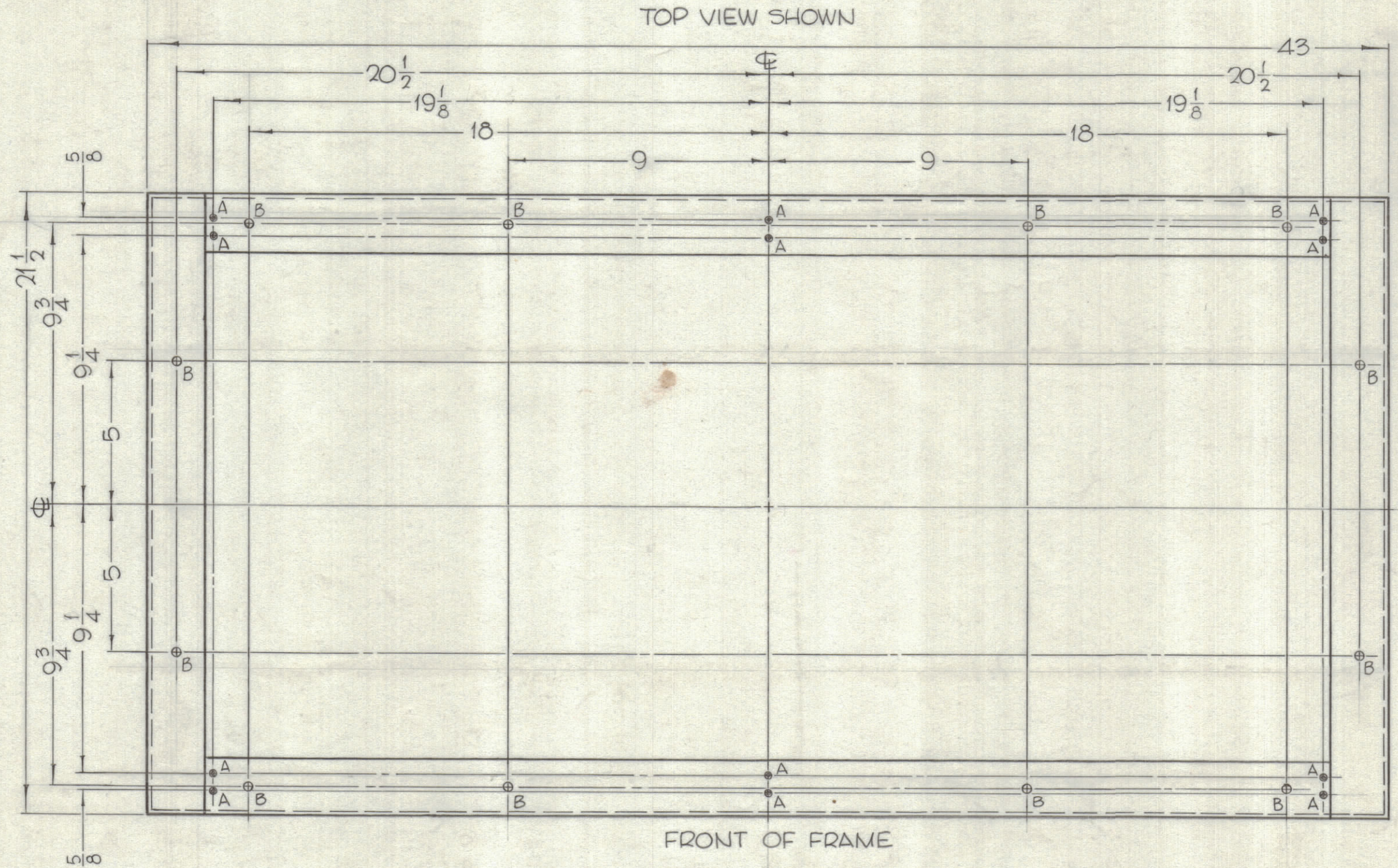
REQ'D.	56	ITEM	1	PART NUMBER	NT-129-1032-6	DESCRIPTION	NUT, ROUND, SWAGE TYPE	SYMBOL	
F. BUDETTI LIST OF MATERIAL									
MATERIAL						THE TECHNICAL MATERIEL CORP.			
SEE SHEET NO.1						MAMARONECK, NEW YORK			
FINISH						TITLE			
SEE SHEET NO.1						FRAME, MAIN			
UNLESS OTHERWISE SPECIFIED DIMENSIONS ARE IN INCHES AND INCLUDE CHEMICALLY APPLIED OR PLATED FINISHES						DRAWN		DATE	
						John C. Biele		6/20/63	
						CHECKED		DATE	
						JCB		4/2/65	
						ELECT. DES.		DATE	
						MECH. DES.		DATE	
						DATE		MS-3324 A	
						DATE		SHEET 3 OF 5	
						DATE		REV. LTR.	

NOTES

THE CONTENTS OF THIS DRAWING ARE THE EXCLUSIVE PROPERTY OF THE TECHNICAL MATERIEL CORP. ITS UNAUTHORIZED USE OR REPRODUCTION IN WHOLE OR IN PART IS STRICTLY FORBIDDEN.

MS-3324 A

REVISIONS						
ZONE	SYM	DESCRIPTION	DATE	E.M.N. NO.	DRAFT	CHKD APPD
X1		TER18K/600BF WAS TER15K/600BF	1-13-64		SRC	
Ø		ORIGINAL RELEASE FOR PRODUCTION	4-2-65	11	SRC	
A		SEE SHEET 1 OF 5	7-7-67	18338	LAK	F.B.



MS-3324 A

ALL SPECIFICATIONS APPLY AS PER SHEET NO. 1.

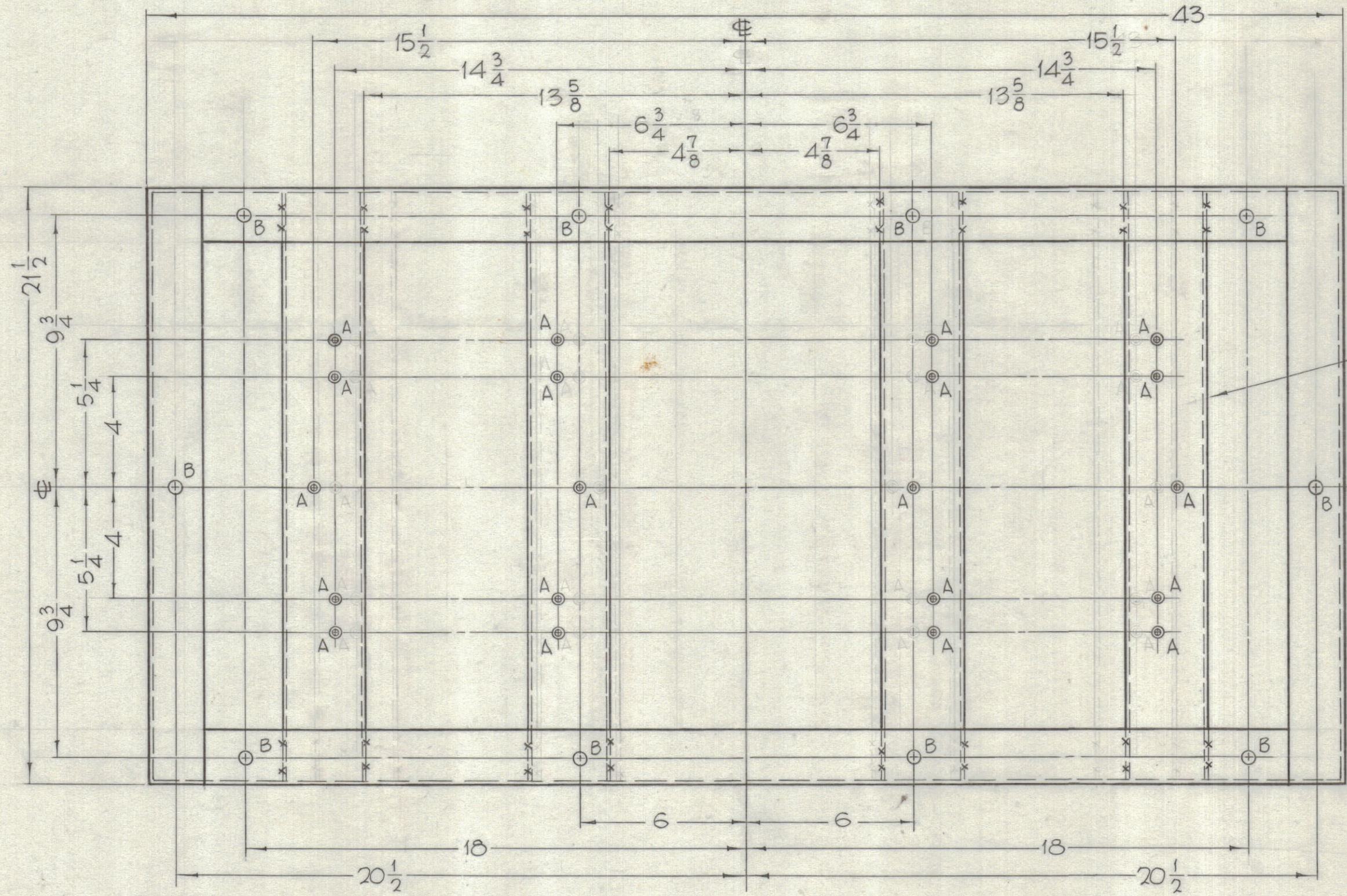
HOLES	REQ.
A-DRILL & C'SK FOR 1032 FHS	12
B-1/4 DIA.	10

REQ'D.	ITEM	PART NUMBER	DESCRIPTION	SYMBOL
F. BUDETTI LIST OF MATERIAL				
MATERIAL		SEE SHEET NO. 1		
FINISH		SEE SHEET NO. 1		
		THE TECHNICAL MATERIEL CORP. MAMARONECK, NEW YORK		
		TITLE FRAME, MAIN		
DRAWN		DATE	FINAL APPROVAL	
John C Biele		8/20/63	[Signature]	
CHECKED		DATE		
[Signature]		4/2/65		
ELECT. DES.		DATE	MS-3324 A	
MECH. DES.		DATE	SHEET 4 OF 5	
		DATE	REV. LTR.	

NOTES

THE CONTENTS OF THIS DRAWING ARE THE EXCLUSIVE PROPERTY OF THE TECHNICAL MATERIEL CORP. ITS UNAUTHORIZED USE OR REPRODUCTION IN WHOLE OR IN PART IS STRICTLY FORBIDDEN.

REVISIONS						
ZONE	SYM	DESCRIPTION	DATE	E.M.N. NO.	DRAFT	CHKD APPD
	X1	TER18K/600BF WAS TER18K/600BF	1-13-64		SRG	
	Ø	ORIGINAL RELEASE FOR PRODUCTION	4-2-65	M	SRG	
	A	SEE SHEET 1 OF 5	7-7-67	18338	LAK	F.B.



5/8 X 3 X 5/8 X 3/16 TH'K
FORMED ALUM. CHANNEL.
(WELD TO BOTTOM AS SHOWN.
(4 REQ.))

BOTTOM VIEW

ALL SPECIFICATIONS APPLY AS PER SHEET NO. 1.

HOLES	REQ.
A-DRILL & C'SK FOR 1/4-20 FHS	20
B-1/2 DIA.	10

REQ'D.	ITEM	PART NUMBER	DESCRIPTION	SYMBOL
F. BUDETTI LIST OF MATERIAL				
MATERIAL		SEE SHEET NO. 1	THE TECHNICAL MATERIEL CORP. MAMARONECK, NEW YORK	
FINISH		SEE SHEET NO. 1	TITLE FRAME, MAIN	
UNLESS OTHERWISE SPECIFIED DIMENSIONS ARE IN INCHES AND INCLUDE CHEMICALLY APPLIED OR PLATED FINISHES		DRAWN John C Biele 8/20/63	DATE 8/20/63	FINAL APPROVAL [Signature]
TOLERANCES		CHECKED JCS	DATE 4/2/65	DATE
DECIMALS .XX ± .01 .XXX ± .005		ELECT. DES. [Signature]		DATE 4-2-65
FRACTIONS ± 1/64 ANGLES ± 0° 30'		MECH. DES. [Signature]		DATE 4-2-65
SHEET 5 OF 5				REV. LTR.

THE CONTENTS OF THIS DRAWING ARE THE EXCLUSIVE PROPERTY OF THE TECHNICAL MATERIEL CORP. ITS UNAUTHORIZED USE OR REPRODUCTION IN WHOLE OR IN PART IS STRICTLY FORBIDDEN.

NOTES

MS-3324 A