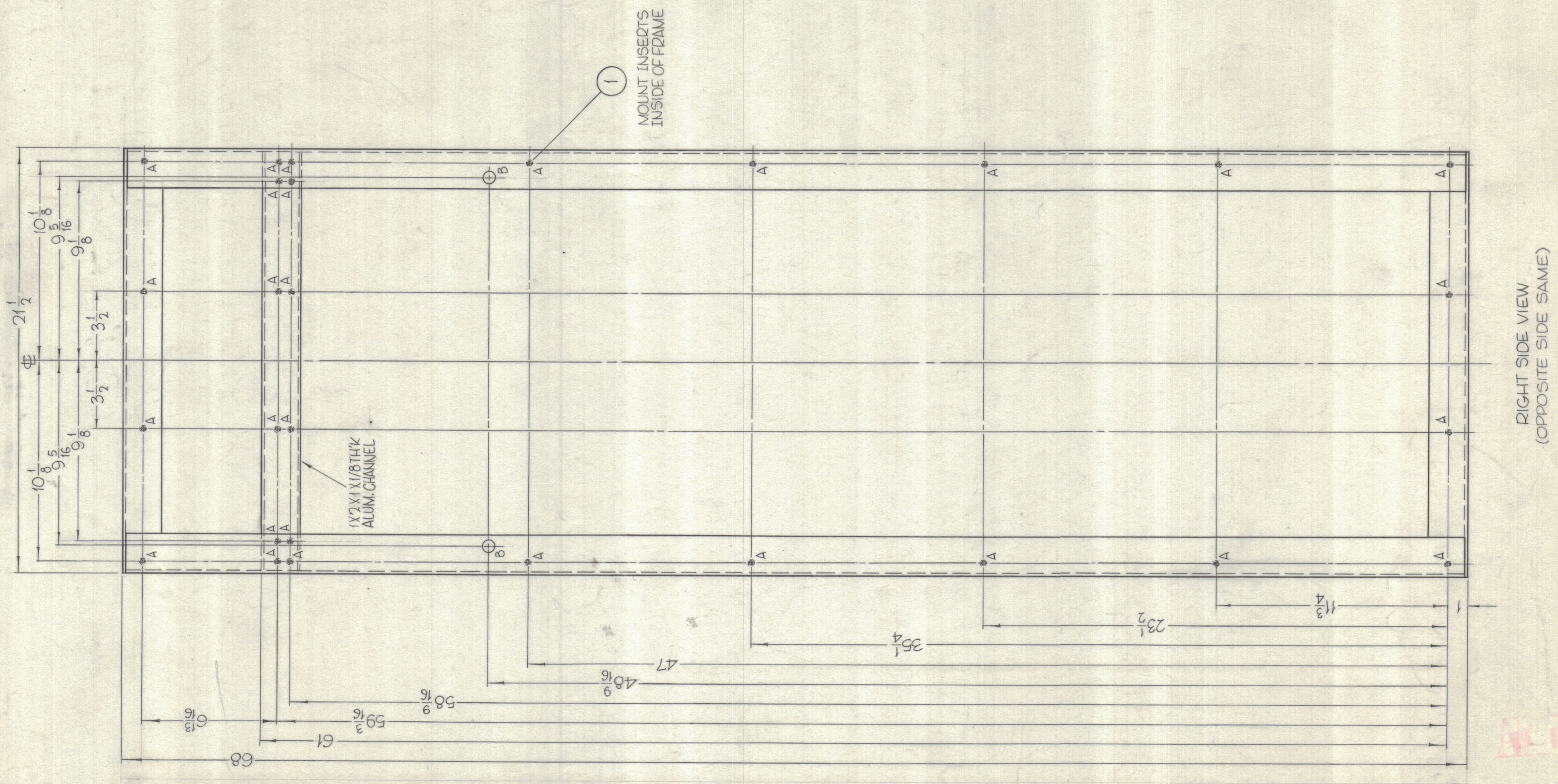


REVISIONS							
ZONE	SYM	DESCRIPTION	DATE	E.M.N. NO.	DRAFT	CHKD	APPD
X1		TER 18K/600BF WAS TER 15K/600BF	7-13-64		SRG		
Ø		ORIGINAL RELEASE FOR PRODUCTION	4-2-65	-M-	SRG		
A		SEE SHEET 1 OF 5	7-7-67	18338	LAK		FB



ALL SPECIFICATIONS APPLY AS PER SHEET NO. 1.

HOLES	REQ.	28	1	NT-129-1032-6	NUT, ROUND, SWAGE TYPE
A-.250 MIN., .253 MAX. DIA'S FOR MTG. NT-129-1032-6 (MOUNT INSIDE FRAME)	28				
B-5/8 DIA.	2				
1		TER-18K/600BF			
Q'TY./UNIT	MODEL USED ON	ASS'Y. NO.			
SCALE	CODE				
1/4" = 1"					
THE CONTENTS OF THIS DRAWING ARE THE EXCLUSIVE PROPERTY OF THE TECHNICAL MATERIEL CORP. ITS UNAUTHORIZED USE OR REPRODUCTION IN WHOLE OR IN PART IS STRICTLY FORBIDDEN.			UNLESS OTHERWISE SPECIFIED DIMENSIONS ARE IN INCHES AND INCLUDE CHEMICALLY APPLIED OR PLATED FINISHES		
DECIMALS .X ± .05 .XX ± .01 .XXX ± .005			FRACTIONS ± 1/64 ANGLES ± 0° 30'		
TOLERANCES					
DRAWN John C. Biele		DATE 8/20/63		FINAL APPROVAL	
CHECKED [Signature]		DATE 11/2/65		[Signature]	
ELECT. DES.		DATE		MS-3324	
MECH. DES.		DATE		A	
				SHEET 2 OF 5	
				REV. LTR.	

NOTES

MS-3324 A