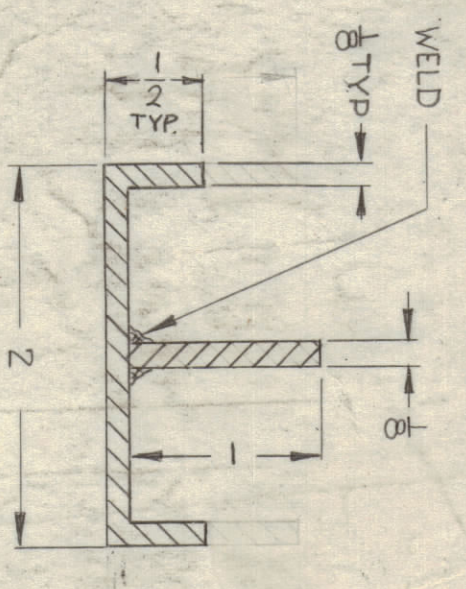
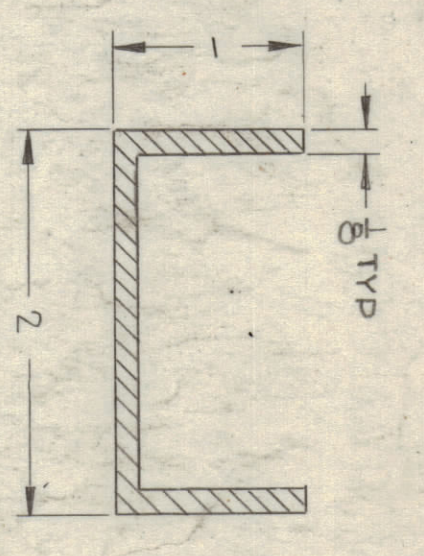


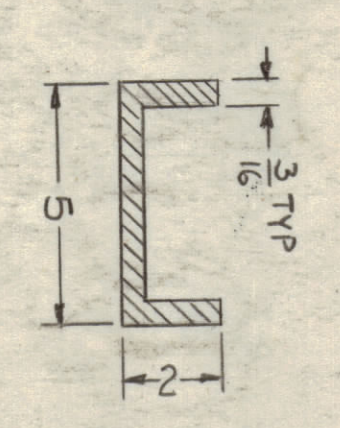
ZONE	SYM	DESCRIPTION	DATE	BY	CHKD	APPD
X1		CHG D HOLES ADDED, SEC. 1A (2) AND 45 DEG RADIUS IN CORNERS (SEE DETAIL)	10/30/54	X1	SSC	
X2		10 DIA HOLES & 45 DEG RADIUS ADDED, SECTION C-C (SEE DETAIL)	11/11/55	X2	MS	
ALL		ORIGINAL RELEASE FOR REPRODUCTION	6/7/55	MS	SC	



SECTION A-A

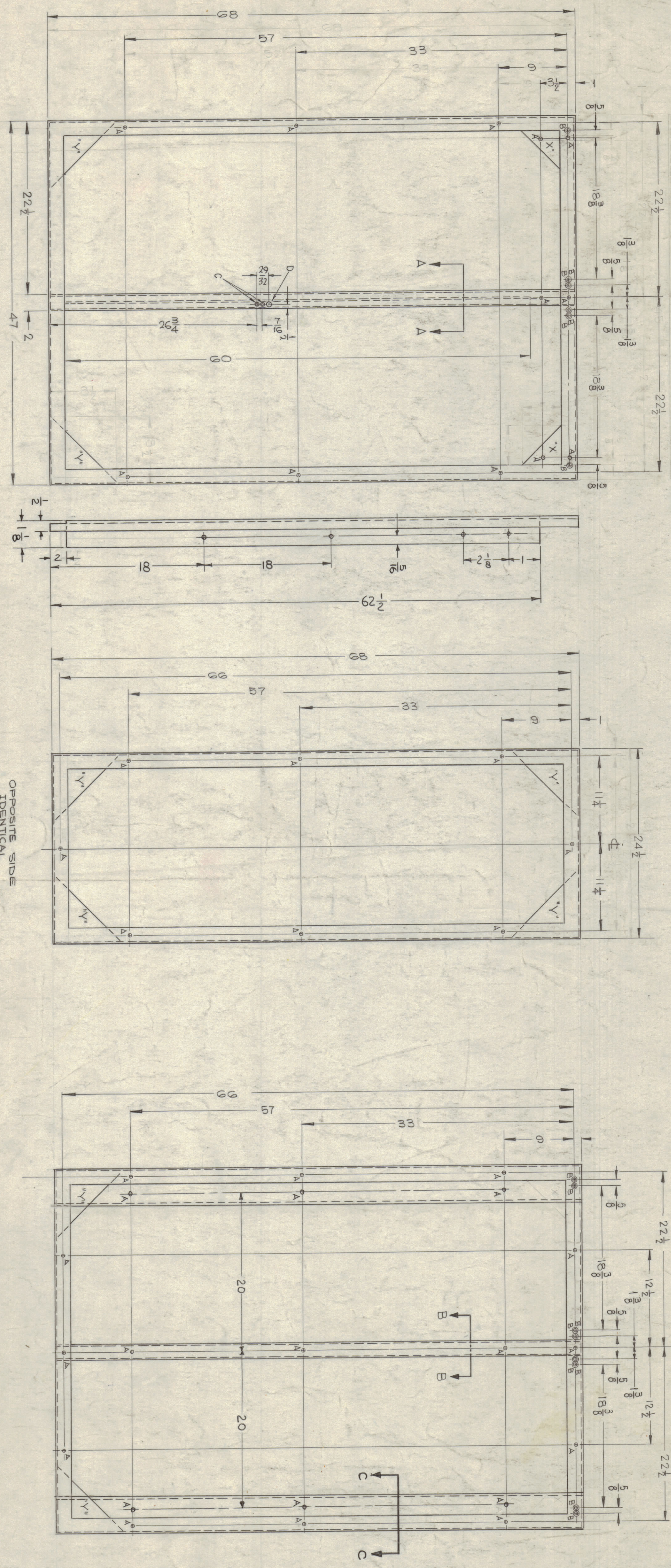


SECTION B-B



SECTION C-C

METAL STAMP TMC PT. NO. 1/8 HIGH GOTHIC W/LATEST REV LETTER



OPPOSITE SIDE IDENTICAL

- UNLESS OTHERWISE SPECIFIED—
1. ANGLE CONSTRUCTION: 2 x 2 x 1/8 THICK ALUMINUM, EXTRUDED TYPE 4 TEMPER: 6063-T5
  2. ALL JOINTS TO BE WELDED INSIDE AND OUTSIDE.
  3. ALL OUTSIDE WELDS TO BE GROUND FLUSH
  4. WELDING TO BE PER MIL-T-5021C, TUNGSTEN INERT GAS PROCESS.
  5. ALL WELD JOINTS TO BE YETD OUT PRIOR TO WELDING.
  6. OUTSIDE SURFACES TO BE REASONABLY FREE OF SCRATCHES AND TOOL MARKS, AND HAVE A SURFACE ROUGHNESS NOT TO EXCEED 125.

- HOLE
- A — 1 1/4 DIA. — 65 REQ.
  - B — .196 DIA., CSK 82° x .390 DIA — 14 REQ.
  - C — .144 DIA., CSK 82° x .284 DIA — 2 REQ.
  - D — 5/16 DIA. — 1 REQ.
  - E — 1/16 DIA. — 6 REQ.
- GUSSET
- X — 5x5 — 2 REQ.
  - Y — 8 1/2 x 8 1/2 — 14 REQ.

<p>TPR-25K600B</p>		<p>MODEL DESIGN</p>		<p>ASBY NO.</p>	
<p>SCALE 1:8</p>		<p>FINISH SA04 - IRIDITE</p>		<p>UNLESS OTHERWISE SPECIFIED DIMENSIONS ARE TO UNFINISHED SURFACES UNLESS OTHERWISE NOTED</p>	
<p>REVISIONS</p>		<p>LIST OF MATERIAL</p>		<p>DESCRIPTION</p>	
<p>THE TECHNICAL MATERIAL CORP. MAMARONECK, NEW YORK</p>		<p>TITLE FRAME, MAIN, DUMMY LOAD</p>		<p>DATE 11/11/55</p>	
<p>NOTES</p>		<p>REVISIONS</p>		<p>DATE</p>	
<p>1. THIS DRAWING IS THE PROPERTY OF THE TECHNICAL MATERIAL CORP. ITS UNAUTHORIZED REPRODUCTION IN WHOLE OR IN PART IS STRICTLY FORBIDDEN.</p>		<p>2. ORIGINAL RELEASE FOR REPRODUCTION</p>		<p>DATE</p>	

MS-3313