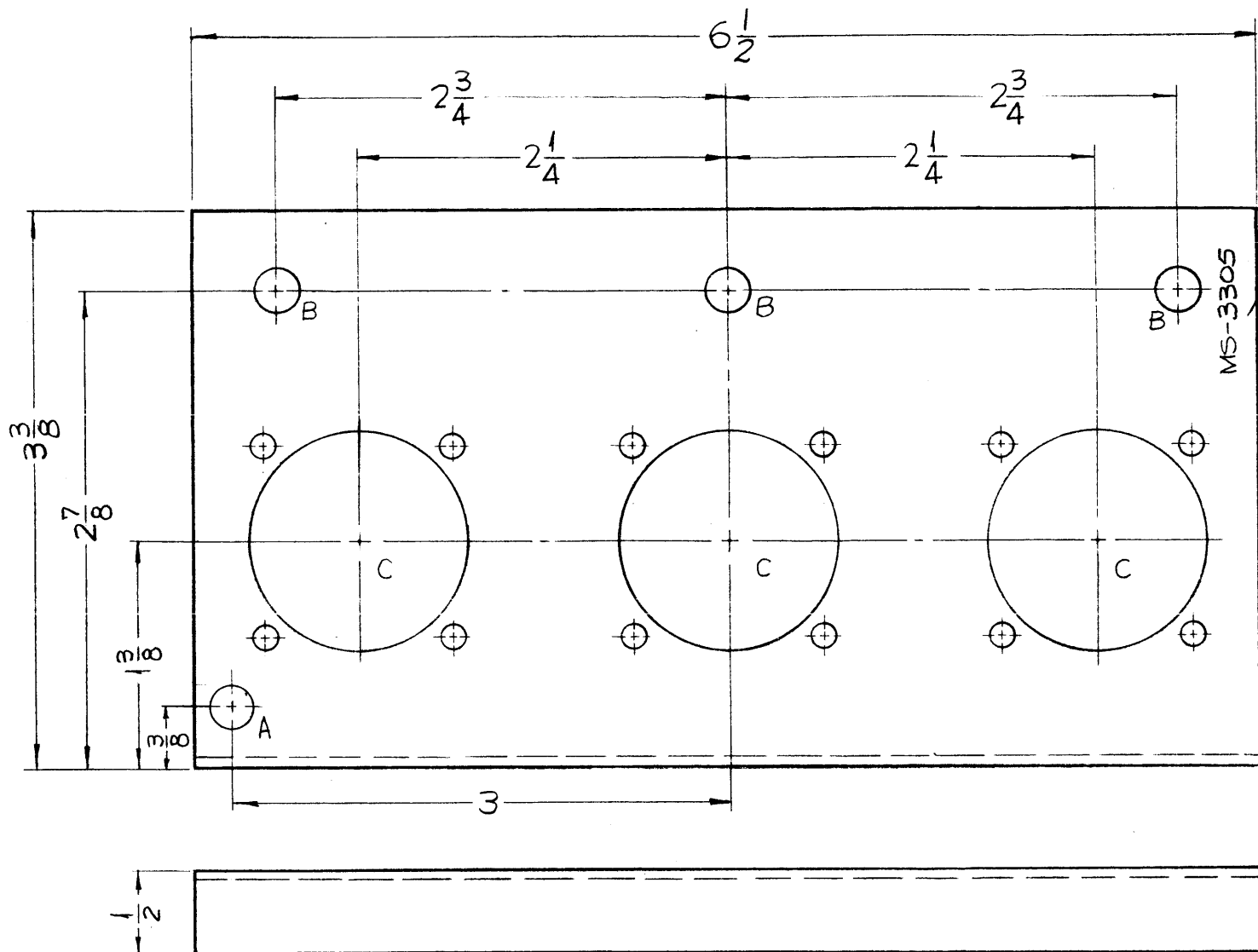


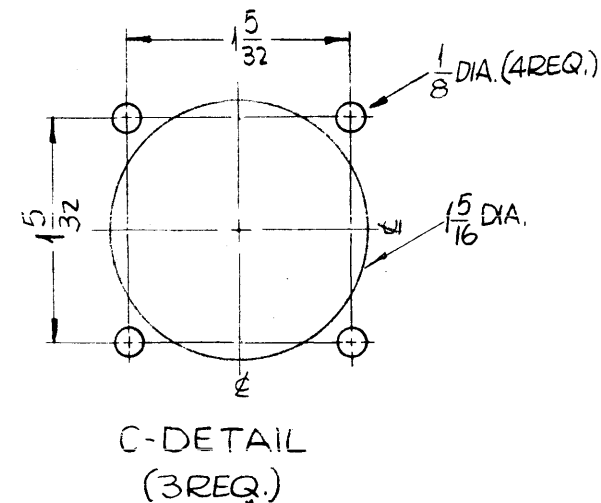
MS-3305 0

THE CONTENTS OF THIS DRAWING ARE THE EXCLUSIVE PROPERTY OF THE TECHNICAL MATERIEL CORP. ITS UNAUTHORIZED USE OR REPRODUCTION IN WHOLE OR IN PART IS STRICTLY FORBIDDEN.



METAL STAMP TMC PART NO. 1/8 HIGH GOTHIC. WITH LATEST REVISION LETTER

HOLES:
 A ~ 15/64 DIA. — 1 REQ.
 B ~ 1/4 DIA. — 3 REQ.



- UNLESS OTHERWISE SPECIFIED:
1. USE MATERIAL THICKNESS FOR MAXIMUM RADIUS ON ALL BENDS.
 2. ALL ANGULAR BENDS 90°.
 3. REMOVE ALL BURRS AND SHARP EDGES.

REF. LD-1271

ORIGINAL RELEASE FOR PRODUCT 5/20/64 0 A.M.		DATE CH. NO. DRAFTS CHECKER ENG. APP.		REQ. PER UNIT		GPT-200K AX-392 7-15-63		PART NO. F.BUDETTI		DESCRIPTION THE TECHNICAL MATERIEL CORP. MAMARONECK, NEW YORK		SYMBOL	
SYM DESCRIPTION		SCALE: 1" = 1"		USED ON		1/16 THICK STOCK SIZE		HOT ROLLED STEEL		BRACKET RECEPTACLE MTG.		SRG 00 RAC	
UNLESS OTHERWISE SPECIFIED: DIMENSIONS ARE IN INCHES TOLERANCES ON FRACTIONS ± 1/64 DECIMALS ± .005 ANGLES ± 1/2°		MAXIMUM ALLOWABLE TOLERANCES HAVE BEEN DETERMINED AND ANY DEVIATIONS WILL BE CAUSE FOR REJECTION. REMOVE ALL BURRS AND SHARP EDGES		1 GPT-200K AX-392 7-15-63		COPPER FLASH		TYPE & TEMPER HEAT TREAT. SPEC.		DRAWN CHECKED		FINAL APPROVAL	
										ELEC. DES. APP. MECH. DES. APP.		MS-3305 0	